

City of Portland
PUBLIC SAFETY BUILDING
 Crime Lab Project

Winton Scott Architects
 5 Milk Street
 Portland, ME 04101

Becker Structural Engineers, Inc.
 75 York Street
 Portland, Maine 04101

Mechanical Systems Engineers
 10 Royal River Center
 Yarmouth, Maine 04096

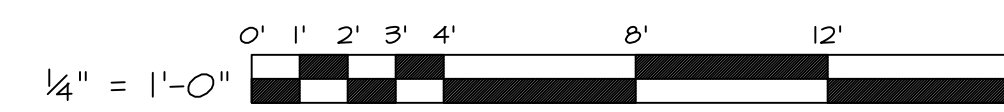
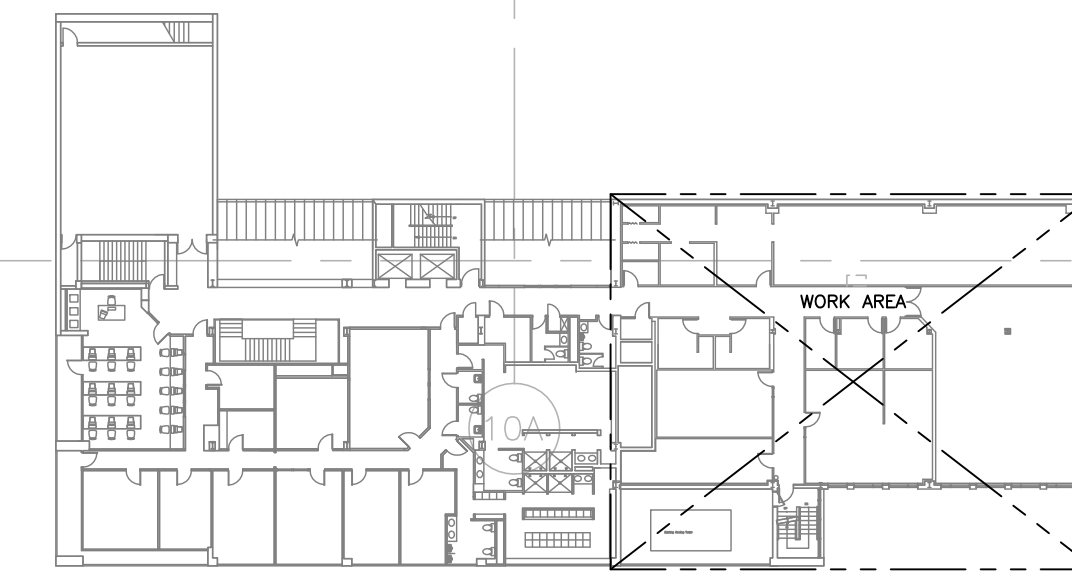
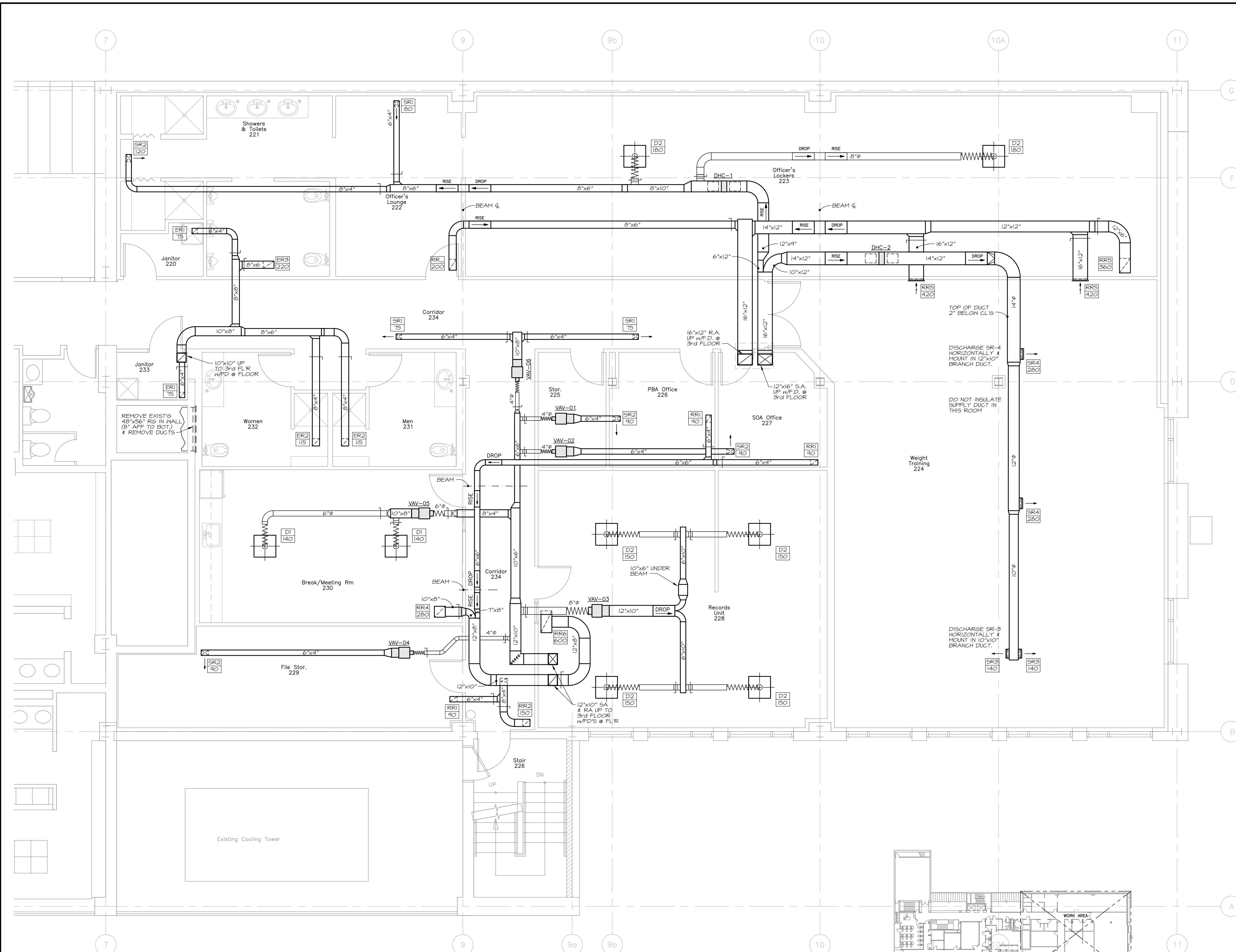
Bartlett Design
 942 Washington St.
 Bath, ME 04530

SECOND FLOOR
 MECHANICAL
 DUCTWORK PLAN

M1

M.S.E. Proj. 0811

Scale: 1/8"=1'-0" Date: 6/16/08



MECHANICAL SYSTEMS ENGINEERS
 ROYAL RIVER CENTER, UNIT #10
 10 FOREST FALLS DRIVE
 YARMOUTH, MAINE 04096
 VOICE: (207) 846-1441
 FAX: (207) 846-1443
 mechsys@maine.rr.com
 © COPYRIGHT 2008

June 17, 2008 - 7:46 am
 \\Msefpa1\Projects\0811-Portland Crime Lab\Drawings\0811 M1-M3.dwg