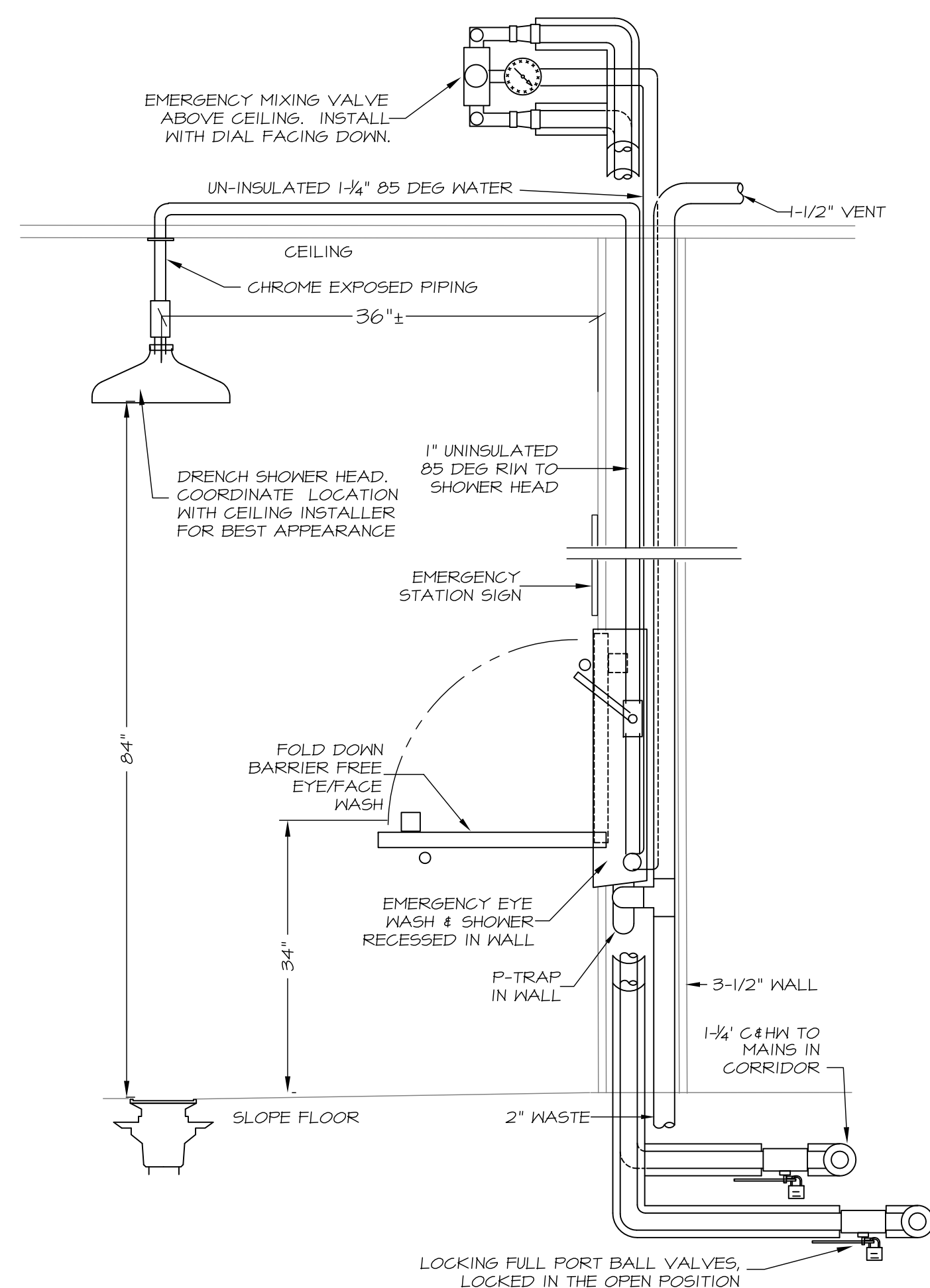


## GENERAL NOTES

- All work shall be in accordance with the Uniform Plumbing Code, state and local laws, codes and ordinances, National Fire Code (NFPA), or these plans or specifications, whichever is more strict.
- All drawings are schematic only, and are intended to indicate the intent, extent, and general arrangement of work. They are not meant to show every fitting, change of direction or every situation. Verify locations in the field. Work indicated shall be furnished complete to perform the function intended.
- Carefully coordinate the space requirements and location of piping with the other trade contractors.
- This contractor shall make all final plumbing connections to equipment/ fixtures provided by other contractors.
- All piping shall run concealed above ceilings, in walls, in soffits and in chases unless noted otherwise. Special care shall be taken when dropping 3" nominal waste pipe in 3-1/2" wall cavities to ensure correct fit and alignment.
- No structural members shall be cored or cut without approval of the Structural Consultant.
- All plumbing shall be supported from the building structure. All piping drops to fixtures shall be anchored solid to walls with a steel support bracket with adjustable clip.
- All water piping shall be installed parallel to building lines and pitched to low points. Provide draw-offs at low points. Piping shall be run neatly grouped together. Also group with heating piping when practical.
- All piping through roofs, masonry walls and partitions shall have steel pipe sleeves. Openings between pipes and sleeves shall be caulked and sealed smoke and water tight. All pipe penetrations through a fire rated wall or floor shall have a U.L. Listed fire stopping system rated to match the rating of the wall, as per the NFPA.
- All wall fixtures shall be carrier mounted unless otherwise specified.
- Run all piping on warm side of building insulation. No water or waste lines shall be run in exterior walls, unless directly indicated.
- Provide shock absorbers (water hammer arresters) where shown on drawings and at the top of the riser on individual runouts feeding dish washers.
- All sanitary waste piping 3" and less shall pitch down at 1/4" per L.F. All 4" and larger piping shall pitch at 1/8" per L.F. whenever possible.



### EMERGENCY SHOWER AND EYEWASH DETAIL

SCALE: NONE

## ABBREVIATIONS, LINE TYPES & SYMBOLS

ABBREVIATION	DESCRIPTION	SYMBOL	DESCRIPTION	SYMBOL
140	140 DEG F HOT WATER	LF	LINEAR FEET	---
ADA	AMERICANS WITH DISABILITIES ACT	LV	LAVATORY	---
AFF	ABOVE FINISHED FLOOR	MB	MOP BASIN	---
BFP	BACKFLOW PREVENTER	MTD	MOUNTED	---
BLV	BALL VALVE	NB	NICKEL BRONZE	---
CNTR	COUNTER	OD	OUTSIDE DIAMETER	---
CO	CLEANOUT	PC	PLUMBING CONTRACTOR	---
CONT	CONTINUATION	PDI	PLUMBING & DRAINAGE INSTITUTE	---
COORD	COORDINATION	PG	PRESSURE GAUGE	---
CW	COLD WATER	PH	PHASE	---
C&HW	COLD & HOT WATER	PRV	PRESSURE REDUCING VALVE	---
DAW	DROP AT WALL	RAW	RISE AT WALL	---
DEG	DEGREES	RH	RIGHT HAND	---
DIV	DIVISION	RIC	RISE IN CHASE	---
DIW	DROP IN WALL	RIW	RISE IN WALL	---
DN	DOWN	RUC	RUN UNDER COUNTER	---
DN&U	DOWN AND UP	S	SANITARY WASTE	---
DNAW	DOWN AT WALL	SA	SHOCK ABSORBER	---
DNW	DOWN IN WALL	SH	SHOWER	---
DO	DRAWOFF	SK	SINK	---
FD	FLOOR DRAIN	SS	STAINLESS STEEL	---
FFE	FINISHED FLOOR ELEVATION	TP	TRAP PRIMER	---
GAL	GALLONS	U&DNIC	UP & DOWN IN CHASE	---
GC	GENERAL CONTRACTOR	U&DNW	UP & DOWN IN WALL	---
GPF	GALLONS PER FLUSH	UW	UP IN WALL	---
GPM	GALLONS PER MINUTE	V	VENT	---
GV	GATE VALVE	VB	VACUUM BREAKER	---
HB	HOSE BIB	VC	VITREOUS CHINA	---
HC	HEATING CONTRACTOR	VIF	VERIFY IN FIELD	---
HW	HOT WATER	VTR	VENT THRU ROOF	---
HW&R	HOT WATER RETURN	W	WASTE	---
IE	INVERT ELEVATION	WV	WITH	---
IDW	INDIRECT WASTE	WC	WATER CLOSET, WATER COLUMN	---
		WCO	WALL CLEANOUT	---
		WSI	WARM SIDE OF INSULATION	---

## DRAINAGE SPECIALTY SCHEDULE

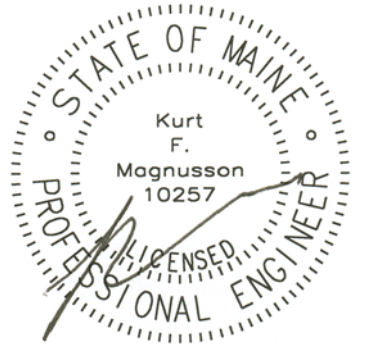
TAG	ITEM	WASTE	VENT	REMARKS
FD-1	GENERAL ROUND FLOOR DRAIN	3"	1-1/2"	NB STRAINER, PVC BODY
FD-2	RECESSED GRATE ROUND FLOOR DRAIN	3"	1-1/2"	NB STRAINER, PVC BODY
FD-3	EMERGENCY SHOWER ROUND FLOOR DRAIN	4"	2"	NB STRAINER, PVC BODY

## PLUMBING FIXTURE SCHEDULE

TAG	FIXTURE	COLD WATER	HOT WATER	SAN/WASTE	VENT	SPECIFICATION AND REMARKS
DC-1	DRYING CABINET	1/2"		1-1/2"	1-1/2"	CABINET BY GC. PVC DRAIN
EE-1	EMERGENCY SHOWER & EYE WASH - ADA		1-1/4" 85°	2"	1-1/2"	SAFETY STATION, SIGNS MODESTY CURTAIN
FH-1	FUME HOOD	1/2"		1-1/2"	1-1/2"	CTE RELOCATED FUME HOOD. PVC DRAIN
LS-1	LAB SINK INTEGRAL W/ COUNTER	1/2"	1/2"	1-1/2" x 2"	1-1/2"	COUNTER AND SINK W/ DRAIN BY GC. DECK MOUNTED GOOSENECK FAUCET W/ VB, CHROME. PVC P-TRAP AND CHROME WHEEL HANDLE SUPPLIES.
LV-1	LAVATORY, COUNTER MTD ADA	1/2"	1/2"	1-1/2" x 1-1/2"	1-1/2"	WHITE, VC LAVATORY. SINGLE LEVER DECK MOUNTED FAUCET, CERAMIC CARTRIDGES, CHROME. INSULATED P-TRAP AND SUPPLY COVERS. CHROME SUPPLIES W/ WHEEL HANDLE STOPS & ESCUTCHEONS, CHROME GRID DRAIN.
MB-1	MOP BASIN FLOOR MTD	1/2"	1/2" 140°	3"	1-1/2"	24"x24"x10" DEEP, MOLDED STONE. WALL MTF SERVICE FAUCET W/ VB, CHROME. MOP HOLDER. S.S. WALL GUARDS.
SH-1	SHOWER - ADA - RIGHT HAND	1/2"	1/2"	2"	1-1/2"	36"x36" FIBERGLASS UNIT W/ GRAB BARS AND SEAT, PRESSURE BALANCED SHOWER VALVE AND HAND HELD HEAD MOUNTED ON ADJUSTABLE BAR.
SH-2	SHOWER - LEFT HAND	1/2"	1/2"	2"	1-1/2"	36"x36" FIBERGLASS UNIT, PRESSURE BALANCED SHOWER VALVE AND HAND WITH CHROME FACE, ARM AND HEAD. MOUNT HEAD ON WALL AT 82".
SH-3	SHOWER - ADA - RIGHT HAND	1/2"	1/2"	2"	1-1/2"	36"x36" FIBERGLASS UNIT W/ GRAB BARS AND SEAT, PRESSURE BALANCED SHOWER VALVE AND HAND HELD HEAD MOUNTED ON ADJUSTABLE BAR.
SH-4	SHOWER - ADA - LEFT HAND	1/2"	1/2"	2"	1-1/2"	36"x36" FIBERGLASS UNIT W/ GRAB BARS AND SEAT, PRESSURE BALANCED SHOWER VALVE AND HAND HELD HEAD MOUNTED ON ADJUSTABLE BAR.
SK-1	SINK, SINGLE BOWL, KITCHEN COUNTER MTD - ADA	1/2"	1/2" 140°	1-1/2" x 2"	1-1/2"	SINGLE BOWL SINK, 18 GA S.S. 22"x25" X 6-1/2" DEEP BOWL, BASKET DRAIN. DECK MOUNTED SINGLE HANDLE KITCHEN FAUCET W/ SIDE SPRAY, CHROME. INSULATED P-TRAP AND SUPPLY COVERS AND CHROME WHEEL HANDLE SUPPLIES.
UR-1	URINAL, WALL MTD FLUSH VALVE	1"	-	2"	1-1/2"	WHITE, VC, CHROME FLUSHVALVE.
UR-2	URINAL, WALL MTD FLUSH VALVE -ADA	1"	-	2"	1-1/2"	WHITE, VC, CHROME FLUSHVALVE. RIM AT 17"
WC-1	WATER CLOSET, FLOOR, MTD, FLUSH VALVE	1"	-	4"	2"	ELONGATED BOWL, WHITE, VC, RIM 14". COMMERCIAL PLASTIC SEAT. CHROME DUAL FLUSH FLUSH VALVE
WC-2	WATER CLOSET, FLOOR, MTD, FLUSH VALVE - ADA	1"	-	4"	2"	ELONGATED BOWL, WHITE, VC, RIM 16-1/2". COMMERCIAL PLASTIC SEAT. CHROME DUAL FLUSH FLUSH VALVE
WC-3	WATER CLOSET, FLOOR, MTD, RIGHT HANDED FLUSH VALVE - ADA	1"	-	4"	2"	ELONGATED BOWL, WHITE, VC, RIM 16-1/2". COMMERCIAL PLASTIC SEAT. CHROME DUAL FLUSH FLUSH VALVE

## WATER SPECIALTY SCHEDULE

TAG	ITEM	CW	HW	OUTLET	REMARKS
BFP-1	BACKFLOW PREVENTER	1/2"		1/2"	
MV-1	EMERGENCY MIXING VALVE	1"	1"	1-1/4"	SET FOR 85 DEG.
SA-1	SHOCK ABSORBER	3/4"		-	BELLOWS TYPE WATER HAMMER ARRESTOR, "A" P.D.I. UNITS
SA-2	SHOCK ABSORBER	3/4"		-	BELLOWS TYPE WATER HAMMER ARRESTOR, "B" P.D.I. UNITS
TP-1	TRAP PRIMER	1/2"		1/2"	



City of Portland  
PUBLIC SAFETY BUILDING  
Crime Lab Project

**Winton Scott Architects**  
5 Milk Street  
Portland, ME 04101

**Becker Structural Engineers, Inc.**  
75 York Street  
Portland, Maine 04101

**Mechanical Systems Engineers**  
10 Royal River Center  
Yarmouth, Maine 04096

**Bartlett Design**  
942 Washington St.  
Bath, ME 04530

PLUMBING  
NOTES &  
SCHEDULES

P4

M.S.E. Proj. 0811

Scale: 1/8"=1'-0" Date: 6/16/08



**MECHANICAL SYSTEMS ENGINEERS**  
ROYAL RIVER CENTER, UNIT #10  
10 FOREST FALLS DRIVE  
YARMOUTH, MAINE 04096  
VOICE: (207) 846-1441  
FAX: (207) 846-1443  
mechsys@maine.me.com  
© COPYRIGHT 2008