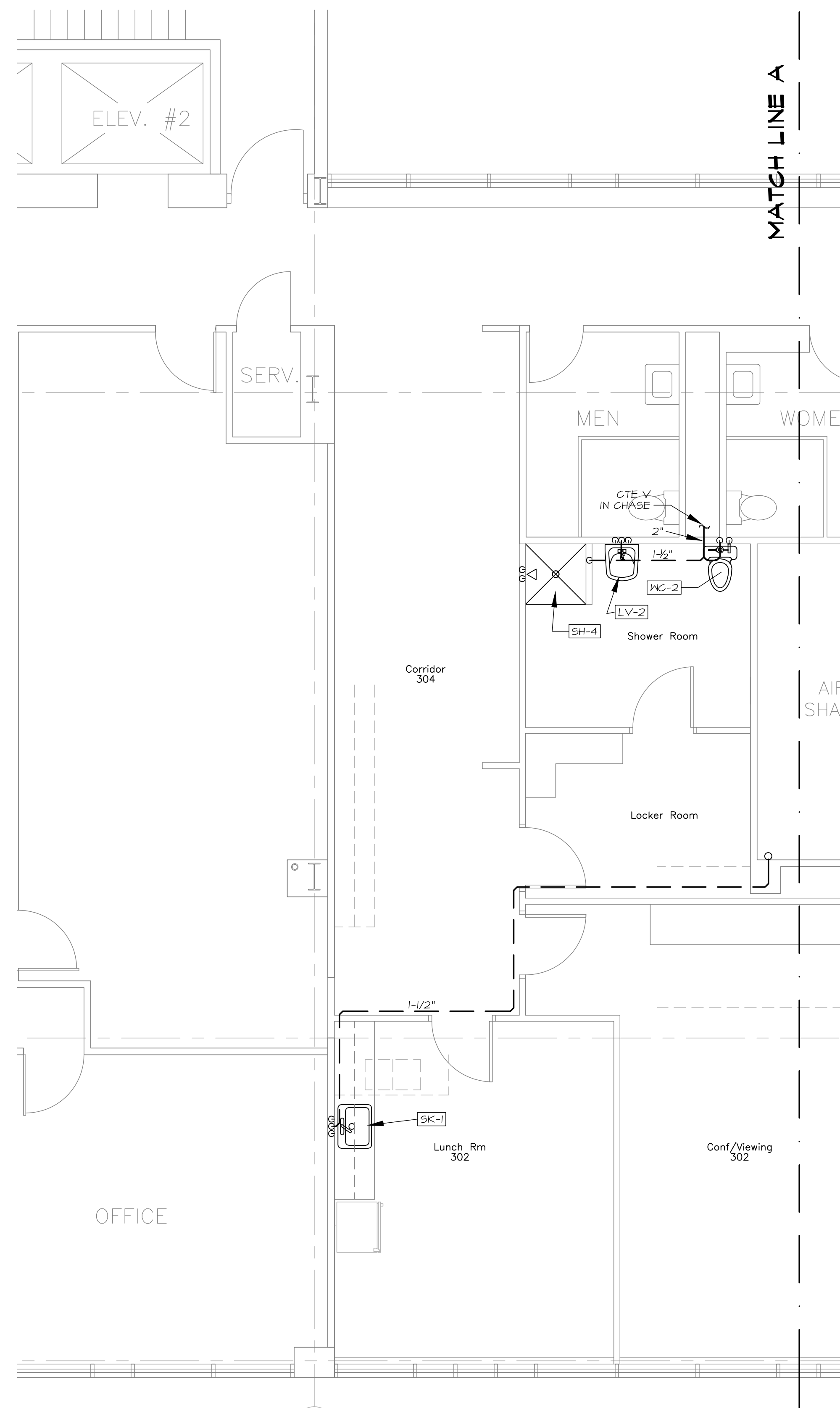
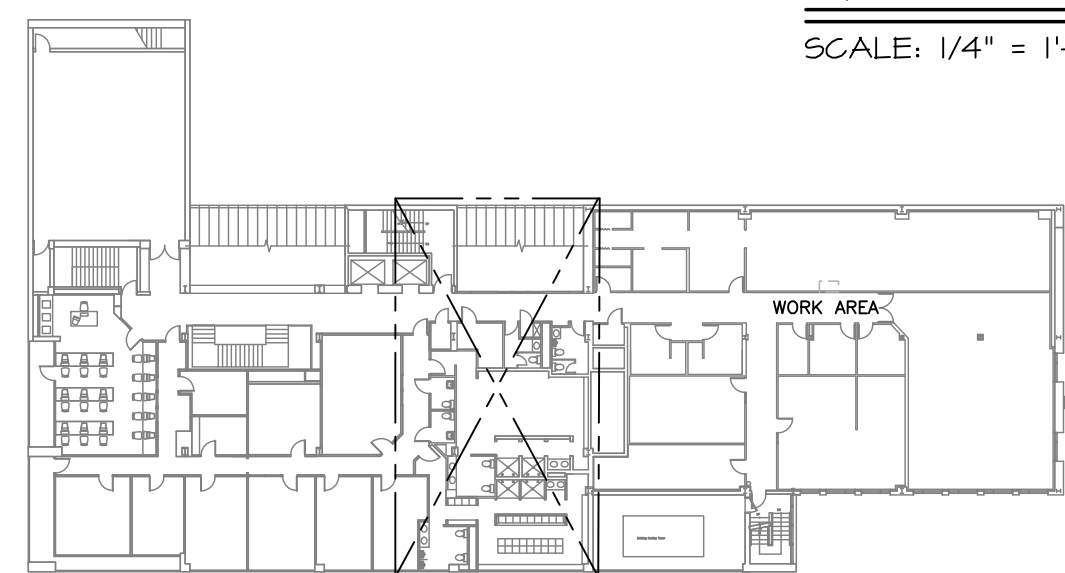
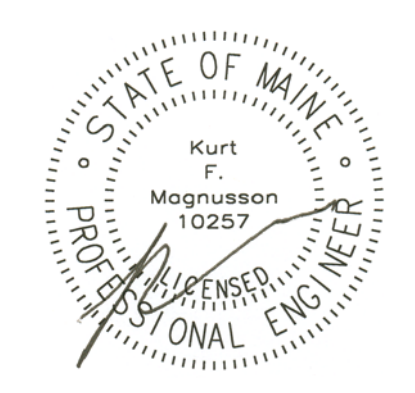
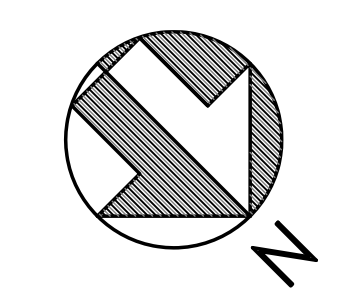
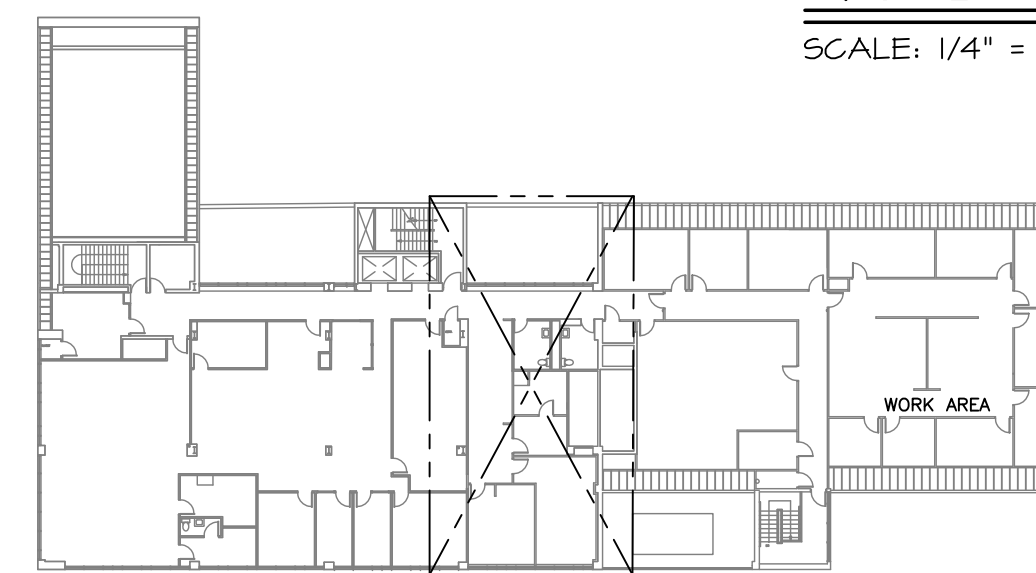


**SECOND FLOOR  
PLUMBING PLAN - AREA B**  
SCALE: 1/4" = 1'-0"



**THIRD FLOOR  
PLUMBING PLAN - AREA B**  
SCALE: 1/4" = 1'-0"



**City of Portland  
PUBLIC SAFETY BUILDING  
Crime Lab Project**

**Winton Scott  
Architects**  
5 Milk Street  
Portland, ME 04101

**Becker Structural  
Engineers, Inc.**  
75 York Street  
Portland, Maine 04101

**Mechanical  
Systems  
Engineers**  
10 Royal River Center  
Yarmouth, Maine 04096

**Bartlett Design**  
942 Washington St.  
Bath, ME 04530

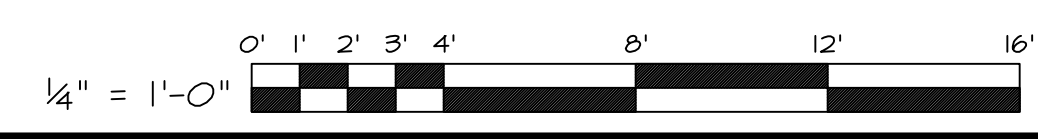
**SECOND AND THIRD  
FLOOR PLUMBING  
PLAN - AREA B**

**P3**

M.S.E. Proj. 0811

Scale: 1/8"=1'-0" Date: 6/16/08

June 18, 2008 - 7:56 am  
\\Mse\ps1\Projects\0811 - Portland Crime Lab\Drawings\0811 P1-P3.dwg



**MECHANICAL SYSTEMS ENGINEERS**  
ROYAL RIVER CENTER UNIT #10  
10 FOREST FALLS DRIVE  
YARMOUTH, MAINE 04096  
VOICE: (207) 846-1441  
FAX: (207) 846-1443  
mechsyst@maine.rr.com  
© COPYRIGHT 2008