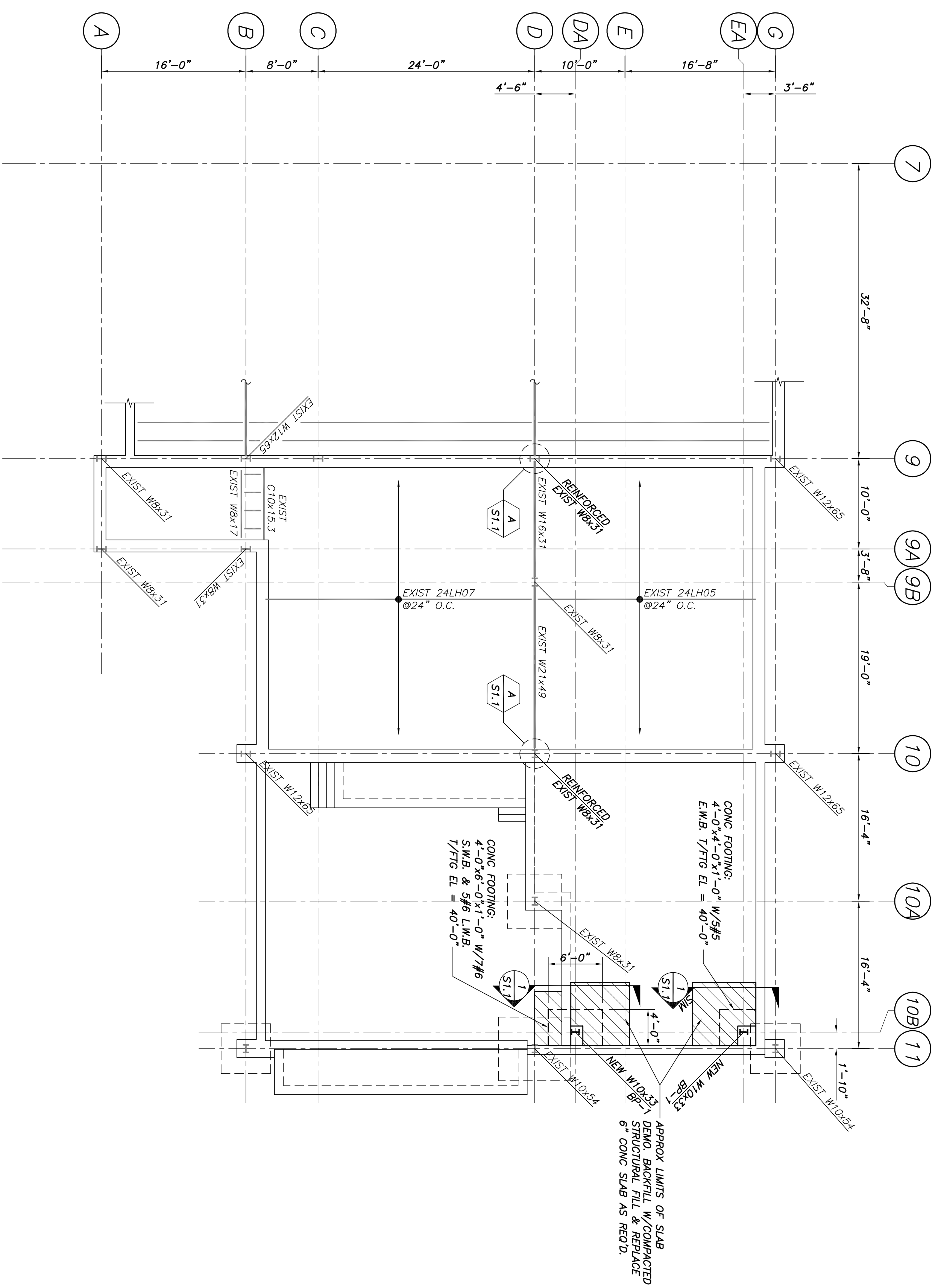
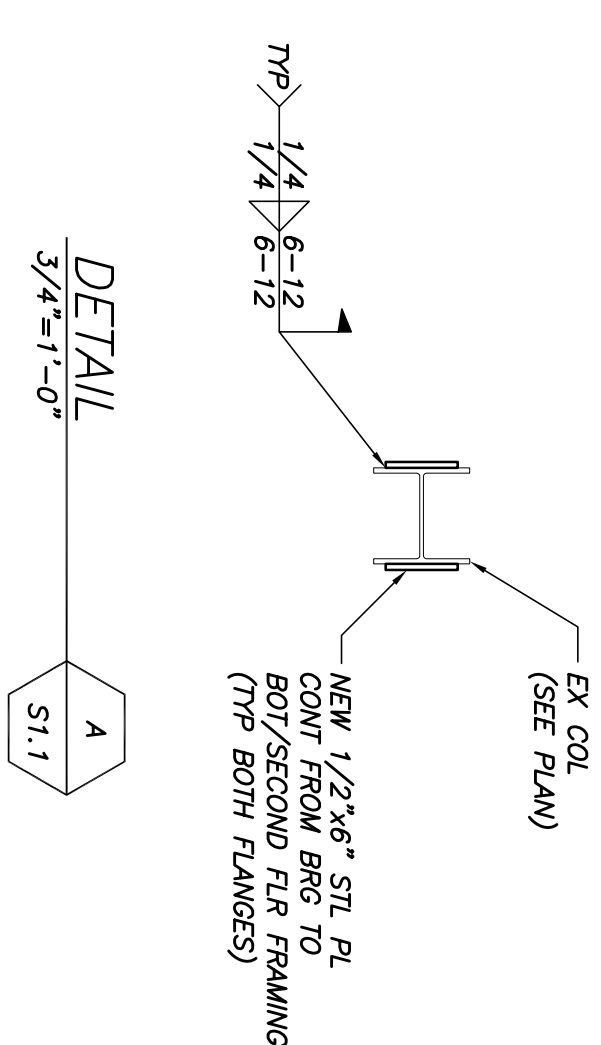
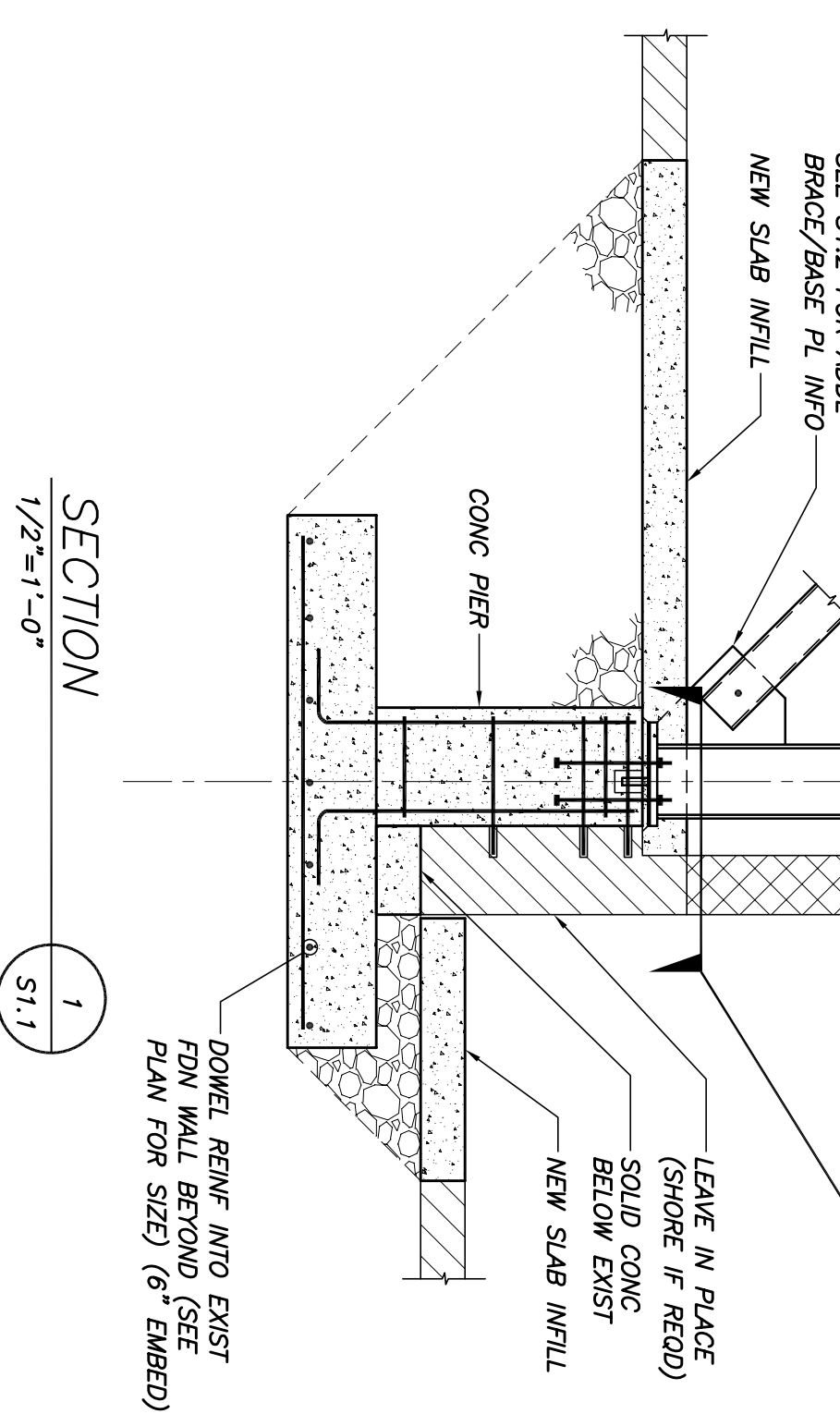
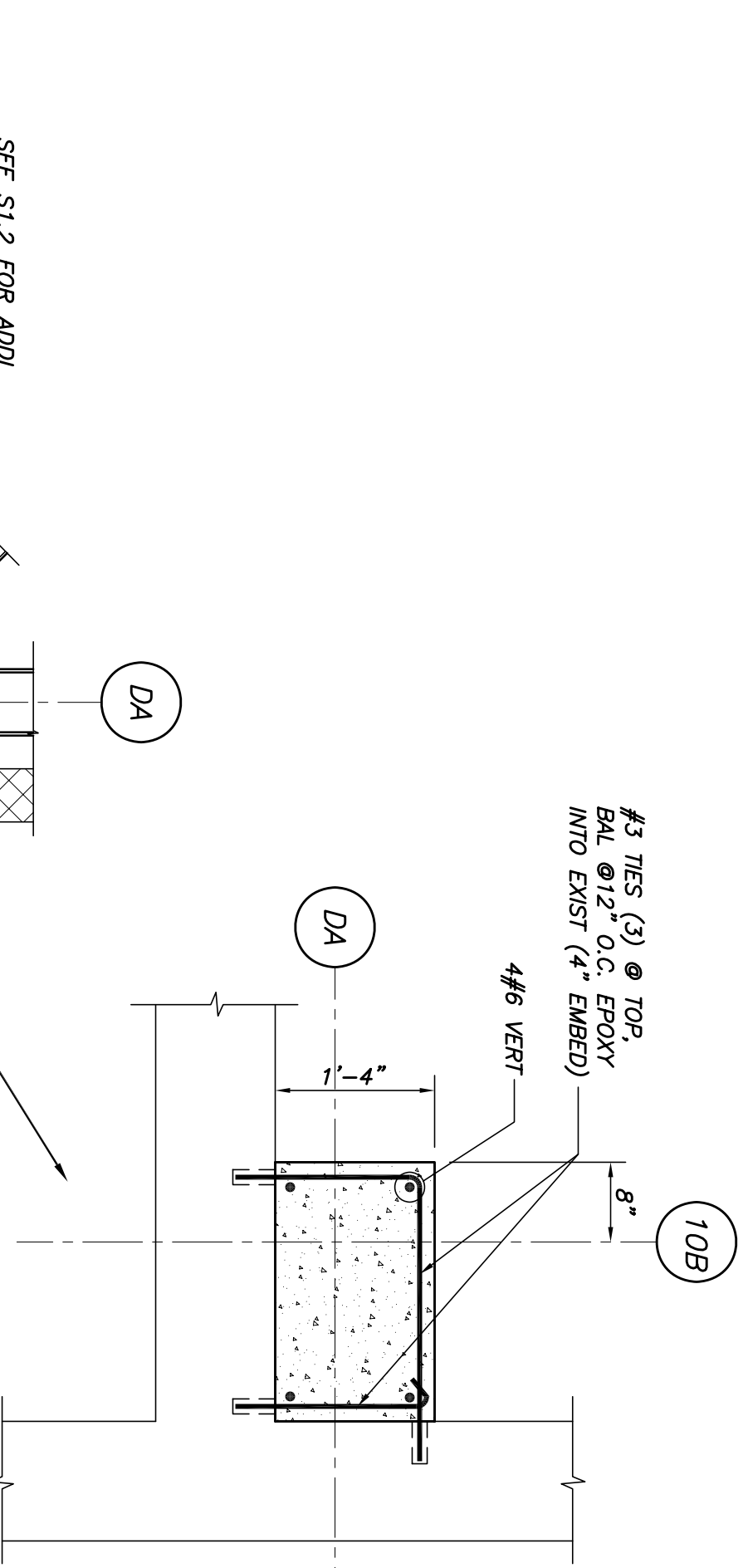




City of Portland
PUBLIC SAFETY
BUILDING
Crime Lab Project



FOUNDATION PART PLAN
1/8"=1'-0"



FOUNDATION
PLAN
S1.1

Architect
Winton Scott Architects
Portland, Maine

Structural Engineering
Becker Structural Engineers
Portland, Maine

Mechanical Engineering
Mechanical Systems Engineers
Yamouth, Maine

Electrical Engineering
Bartlett Design
Bath, Maine