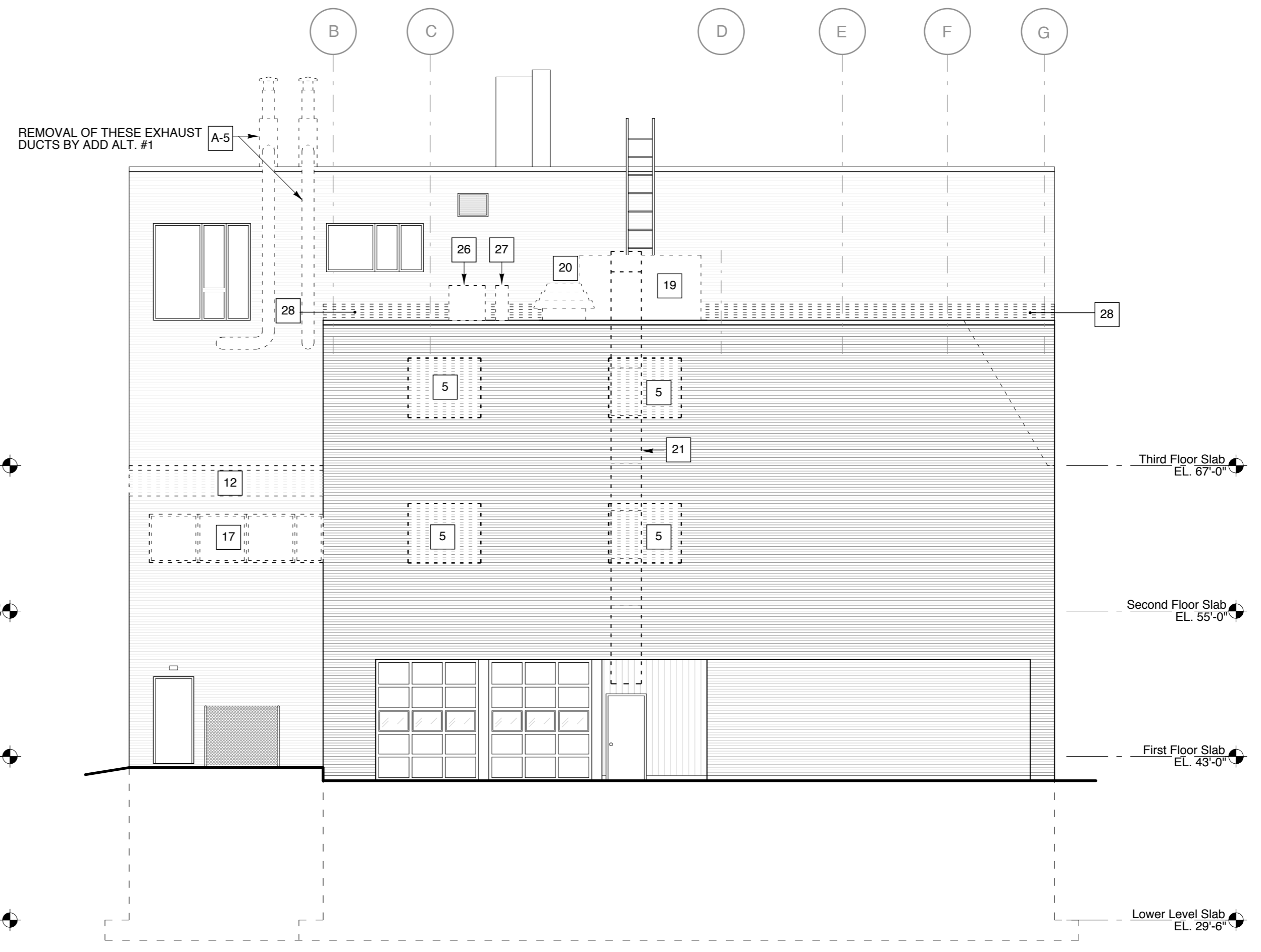
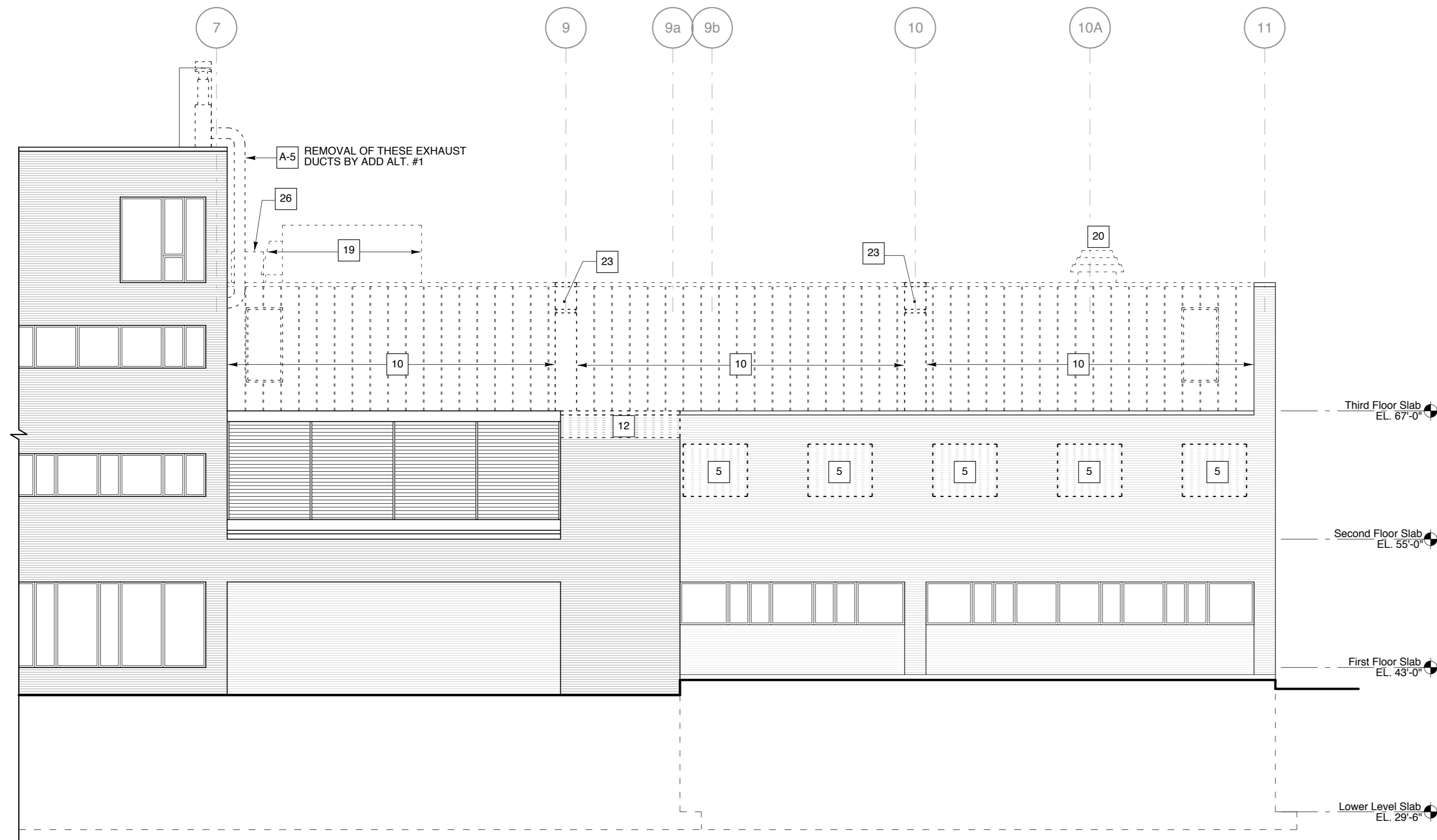
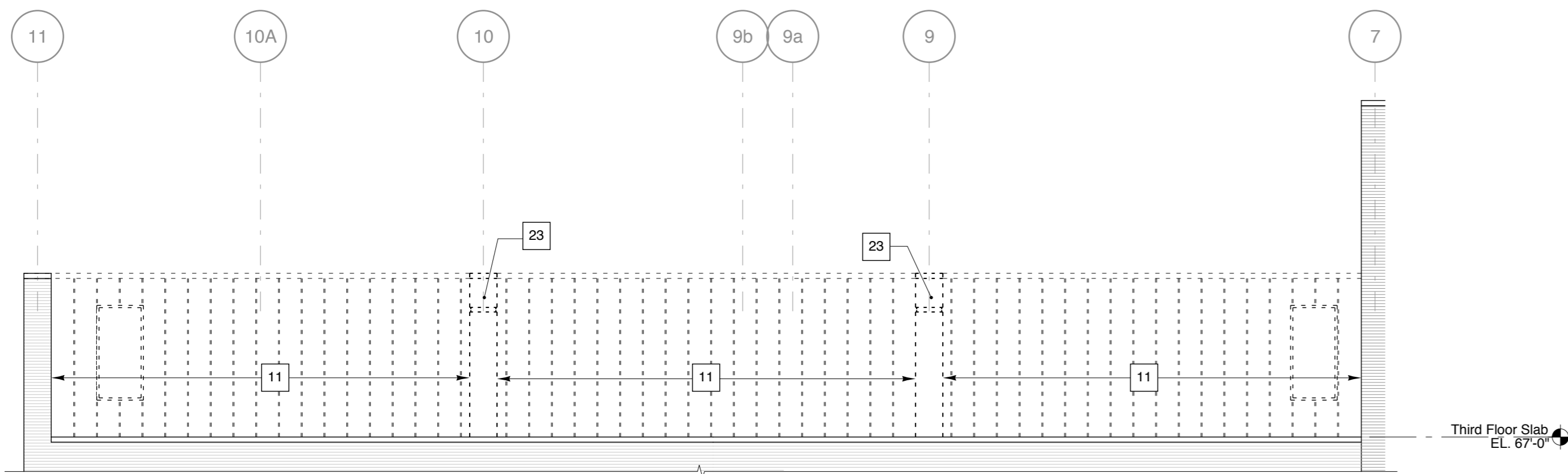


City of Portland  
**PUBLIC SAFETY BUILDING**  
 Crime Lab Project



1 North Elevation - Demolition  
 1/8" = 1'-0"

2 West Elevation - Demolition  
 1/8" = 1'-0"



3 Partial South Elevation - Demolition  
 1/8" = 1'-0"

**DEMOLITION NOTES**

- 1 Remove existing storage enclosure including walls, ceiling, doors and frames complete. Remove all electrical fixtures and conduits associated to the storage.
- 2 Remove existing door and frame complete, back to original masonry opening.
- 3 Remove existing door (frame to remain) in preparation for installation of new door within existing frame.
- 4 Remove existing metal handrail and guardrail from basement to top floor complete in preparation for installation of new Code compliant steel handrail and guardrail.
- 5 Remove portion of existing exterior masonry wall in preparation for installation of new window. Remove +/- 4 courses of brick above required M.O. to allow for installation of flashing. See window schedule and details.
- 6 Relocate / modify existing roof drain pipes as indicated in Plumbing drawings.
- 7 Remove existing window complete.
- 8 Remove existing wall hung mats and associated hangers complete and turn over to Owner.
- 9 Remove portion of concrete slab in preparation for installation of new column. After completion of structural work, fill-in concrete around columns. See Structural and A14 and A17.
- 10 Remove existing metal roof covering, structural tectum panels, steel tee framing and skylights complete. See Structural and architectural drawings for new layout.
- 11 Remove existing metal roof covering, structural tectum panels, steel tee framing and skylights in preparation for installation of new insulation, deck and metal covering. See Structural.
- 12 Remove existing stair roof (structure, deck, membrane, etc.) in preparation for stair tower expansion.
- 13 Remove existing basketball hoops and glass backboards with all related supports and turn over to Owner.
- 14 Remove all existing ductwork and related piping serving the gymnasium. See Mechanical drawings.
- 15 Remove all existing lighting, speakers, fire alarm equipment, exit signs and all related conduits serving the gymnasium. Turn over to Owner ceiling light fixtures and speakers.
- 16 Remove all existing scoreboards and related supports and turn over to Owner.
- 17 Remove existing aluminum window complete in preparation for masonry in-fill.
- 18 Remove existing grille complete in preparation for masonry in-fill (+/- 48" x 54"). Opening will be used for installation of mechanical tie-ins before infilling. See Mechanical drawings.
- 19 Remove existing gymnasium air handling unit and all related ductwork and piping complete. See Mechanical drawings.
- 20 Remove existing roof vent complete. See Mechanical drawings.
- 21 Relocate existing air intake duct from 2nd floor up between new windows.
- 22 Remove existing basketball hoops and wood backboards with all related supports and turn over to Owner.
- 23 Remove existing metal cladding, steel angles and steel plates surrounding steel beam and column in preparation for reinforcement. See Structural and Architectural drawings for extent of new work.
- 24 Remove existing roof membrane, insulation, steel angles, structural tectum panels, parapet wood blocking and fascia complete in preparation for installation of new steel deck, insulation, membrane, parapet and fascia.
- 25 Remove existing drywall soffit, steel valance and light fixtures complete.
- 26 Remove existing condensing unit and all associated piping complete. See Mechanical drawings.
- 27 Remove existing condensing unit and all associated piping to allow for roof work. Re-install after completion of roof work. See Mechanical drawings.
- 28 Remove portion of existing masonry and flashing in preparation for new flashing installation. Re-install brick. See A4 and A8.

**DEMOLITION NOTES FOR ADD ALTERNATE #1**

WORK INCLUDED IN ADD ALTERNATE #1 SHALL START ONLY ONCE THE MAIN PROJECT SHOWN IN THIS ENTIRE DRAWING SET IS COMPLETE; ALL THE EQUIPMENT HAS BEEN MOVED AND INSTALLED IN THE NEW SPACES; AND THAT THE NEW SPACES ARE FUNCTIONAL.

- A-1 Remove existing counter and cabinets complete in preparation for new layout.
- A-2 Remove existing floor covering in preparation for installation of new floor covering.
- A-3 Remove existing drywall ceiling and all light fixtures and related conduits complete in preparation for installation of new layout ceiling and light fixtures.
- A-4 Remove existing counter, cabinets, sink and all associated piping complete in preparation for new layout.
- A-5 Remove existing exterior exhaust ductwork complete.

REFER TO MECHANICAL DRAWINGS FOR MECHANICAL REMOVALS.

Winton Scott  
 Architects  
 5 Milk Street  
 Portland, ME 04101

Becker Structural  
 Engineers, Inc.  
 75 York Street  
 Portland, Maine 04101

Mechanical  
 Systems  
 Engineers  
 10 Royal River Center  
 Yarmouth, Maine 04096

Bartlett Design  
 942 Washington St.  
 Bath, ME 04530

EXTERIOR ELEVATIONS  
 DEMOLITION

**D4**