

# DEMOLITION NOTES

- 1 Remove existing storage enclosure including walls, ceiling, doors and frames complete. Remove all electrical fixtures and conduits associated to the storage.
- 2 Remove existing door and frame complete, back to original masonry opening.
- 3 Remove existing door (frame to remain) in preparation for installation of new door within existing frame.
- 4 Remove existing metal handrail and guardrail from basement to top floor complete in preparation for installation of new Code compliant steel handrail and guardrail.
- 5 Remove portion of existing exterior masonry wall in preparation for installation of new window. Remove +/- 4 courses of brick above required M.O. to allow for installation of flashing. See window schedule and details.
- 6 Relocate / modify existing roof drain pipes as indicated in Plumbing drawings.
- 7 Remove existing window complete.
- 8 Remove existing wall hung mats and associated hangers complete and turn over to Owner.
- 9 Remove portion of concrete slab in preparation for installation of new column. After completion of structural work, fill-in concrete around columns. See Structural and A14 and A17.
- 10 Remove existing metal roof covering, structural tectum panels, steel tee framing and skylights complete. See Structural and architectural drawings for new layout.
- 11 Remove existing metal roof covering, structural tectum panels, steel tee framing and skylights in preparation for installation of new insulation, deck and metal covering. See Structural.
- 12 Remove existing stair roof (structure, deck, membrane, etc.) in preparation for stair tower expansion.
- 13 Remove existing basketball hoops and glass backboards with all related supports and turn over to Owner.
- 14 Remove all existing ductwork and related piping serving the gymnasium. See Mechanical drawings.
- 15 Remove all existing lighting, speakers, fire alarm equipment, exit signs and all related conduits serving the gymnasium. Turn over to Owner ceiling light fixtures and speakers.
- 16 Remove all existing scoreboards and related supports and turn over to Owner.
- 17 Remove existing aluminum window complete in preparation for masonry in-fill.
- 18 Remove existing grille complete in preparation for masonry in-fill (+/- 48" x 54"). Opening will be used for installation of mechanical tie-ins before infilling. See Mechanical drawings.
- 19 Remove existing gymnasium air handling unit and all related ductwork and piping complete. See Mechanical drawings.
- 20 Remove existing roof vent complete. See Mechanical drawings.
- 21 Relocate existing air intake duct from 2nd floor up between new windows.
- 22 Remove existing basketball hoops and wood backboards with all related supports and turn over to Owner.
- 23 Remove existing metal cladding, steel angles and steel plates surrounding steel beam and column in preparation for reinforcement. See Structural and Architectural drawings for extent of new work.
- 24 Remove existing roof membrane, insulation, steel angles, structural tectum panels, parapet wood blocking and fascia complete in preparation for installation of new steel deck, insulation, membrane, parapet and fascia.
- 25 Remove existing drywall soffit, steel valance and light fixtures complete.
- 26 Remove existing condensing unit and all associated piping complete. See Mechanical drawings.
- 27 Remove existing condensing unit and all associated piping to allow for roof work. Re-install after completion of roof work. See Mechanical drawings.
- 28 Remove portion of existing masonry and flashing in preparation for new flashing installation. Re-install brick. See A4 and A8.

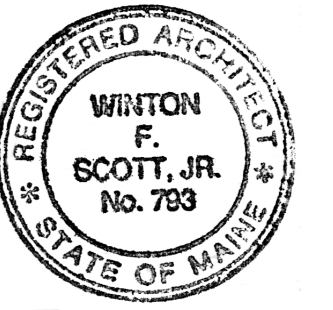
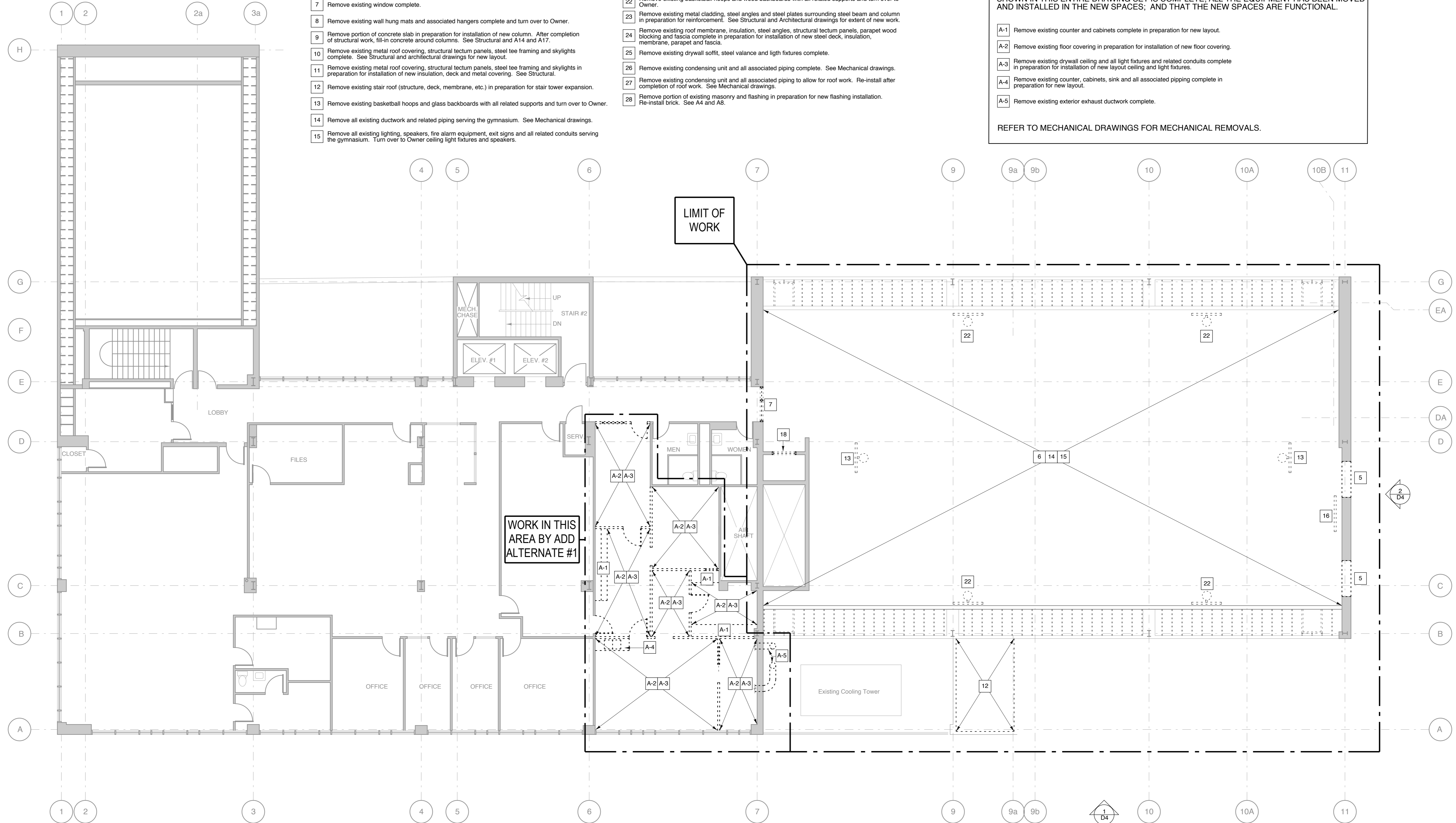
SEE A14 AND STRUCTURAL DRAWINGS FOR ADDITIONAL DEMOLITION AT FIRST FLOOR.  
SEE S1.1 FOR DEMOLITION RELATED TO FOUNDATION WORK.

## DEMOLITION NOTES FOR ADD ALTERNATE #1

WORK INCLUDED IN ADD ALTERNATE #1 SHALL START ONLY ONCE THE MAIN PROJECT SHOWN IN THIS ENTIRE DRAWING SET IS COMPLETE; ALL THE EQUIPMENT HAS BEEN MOVED AND INSTALLED IN THE NEW SPACES; AND THAT THE NEW SPACES ARE FUNCTIONAL.

- A-1 Remove existing counter and cabinets complete in preparation for new layout.
- A-2 Remove existing floor covering in preparation for installation of new floor covering.
- A-3 Remove existing drywall ceiling and all light fixtures and related conduits complete in preparation for installation of new layout ceiling and light fixtures.
- A-4 Remove existing counter, cabinets, sink and all associated piping complete in preparation for new layout.
- A-5 Remove existing exterior exhaust ductwork complete.

REFER TO MECHANICAL DRAWINGS FOR MECHANICAL REMOVALS.



City of Portland  
**PUBLIC SAFETY BUILDING**  
Crime Lab Project

**Winton Scott Architects**  
5 Milk Street  
Portland, ME 04101

**Becker Structural Engineers, Inc.**  
75 York Street  
Portland, Maine 04101

**Mechanical Systems Engineers**  
10 Royal River Center  
Yarmouth, Maine 04096

**Bartlett Design**  
942 Washington St.  
Bath, ME 04530

THIRD FLOOR  
DEMOLITION PLAN

# D2

**1** Third Floor Demolition Plan  
1/8" = 1'-0"