

City of Portland  
**PUBLIC SAFETY BUILDING**  
 Crime Lab Project

Winton Scott  
 Architects  
 5 Milk Street  
 Portland, ME 04101

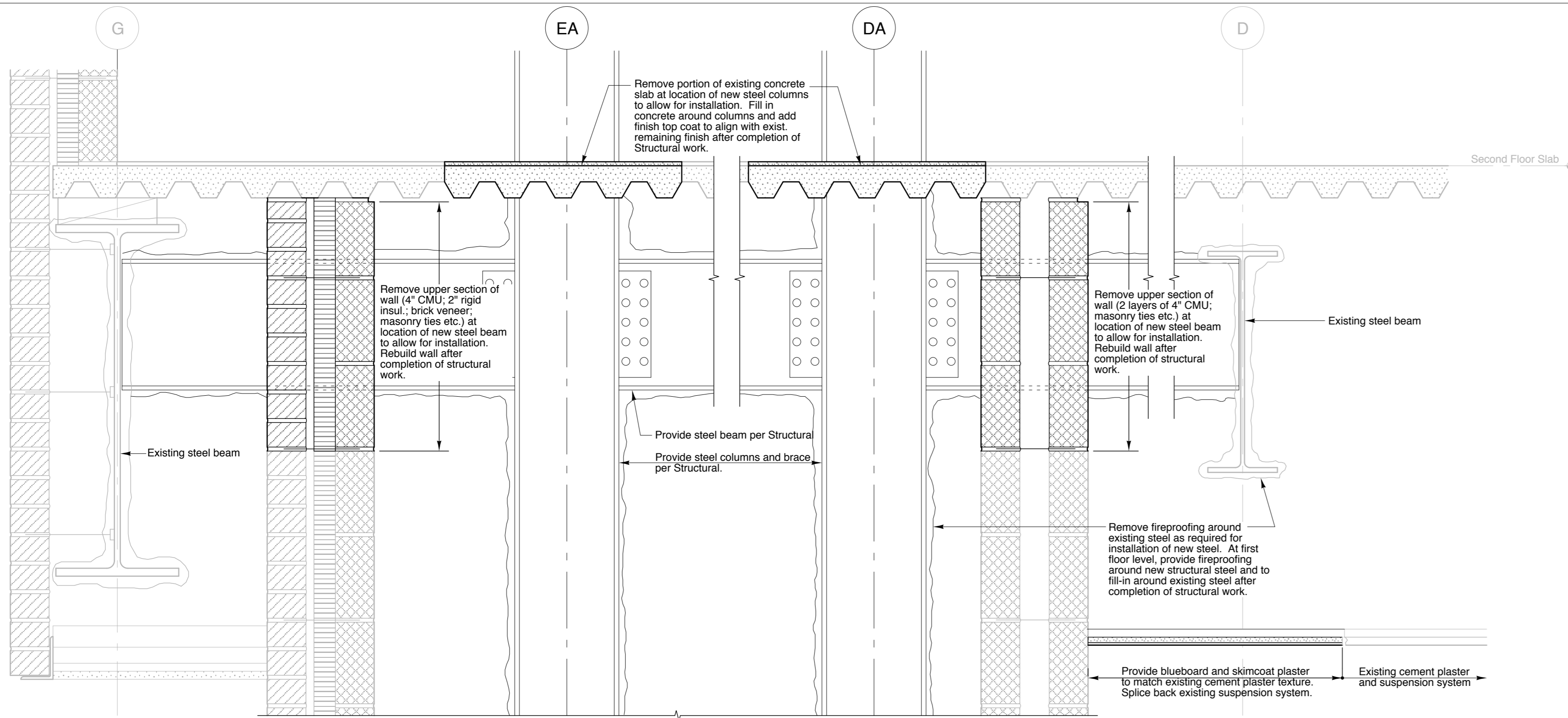
Becker Structural  
 Engineers, Inc.  
 75 York Street  
 Portland, Maine 04101

Mechanical  
 Systems  
 Engineers  
 10 Royal River Center  
 Yarmouth, Maine 04096

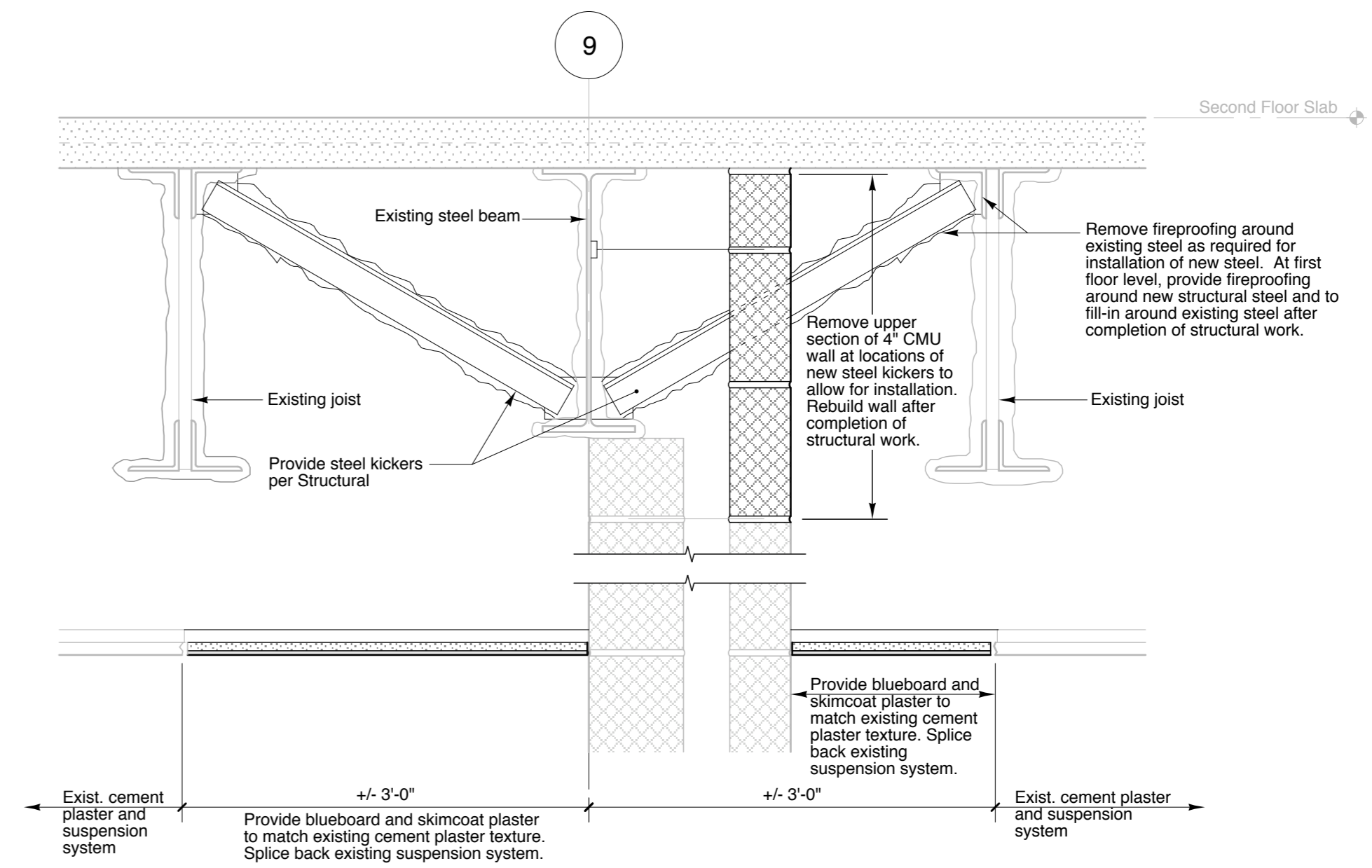
Bartlett Design  
 942 Washington St.  
 Bath, ME 04530

CEILING AND SOFFIT DETAILS

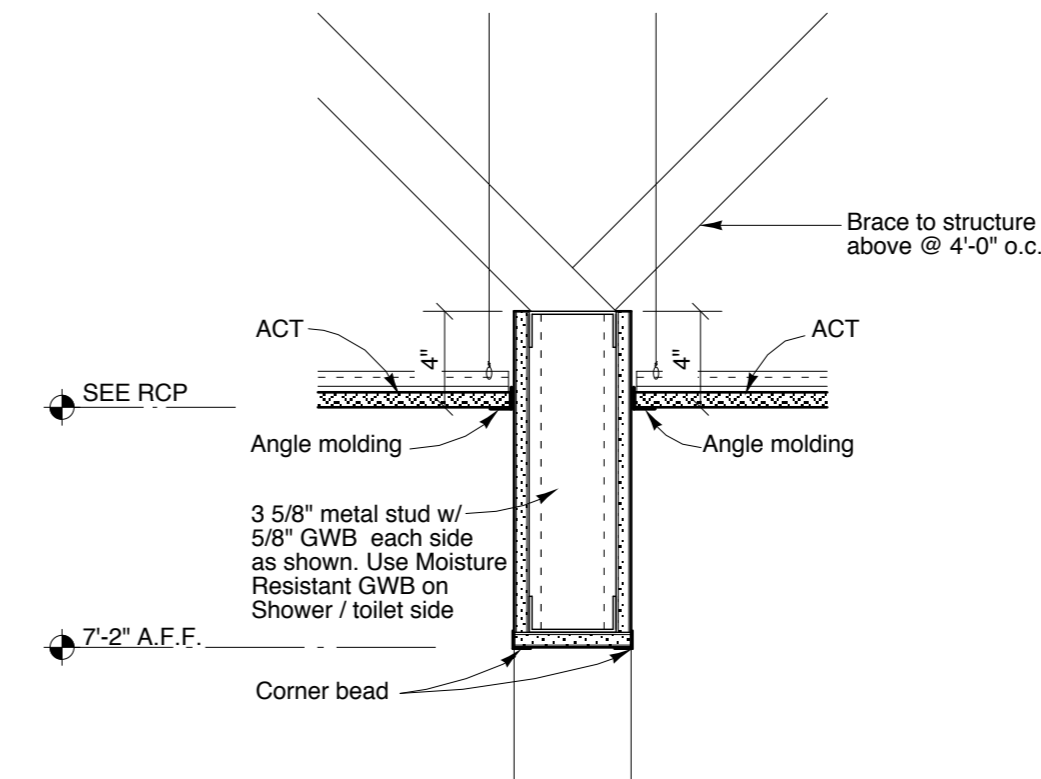
**A17**



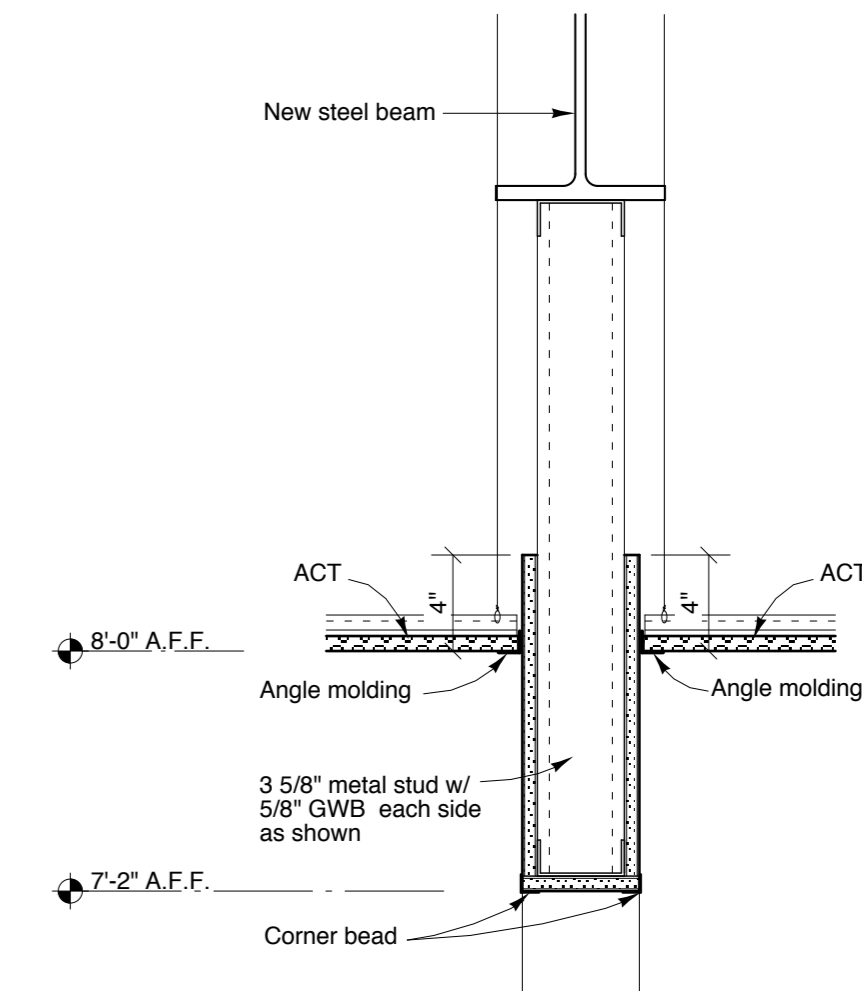
**1** Detail at New Braced Frame  
 1 1/2" = 1'-0"



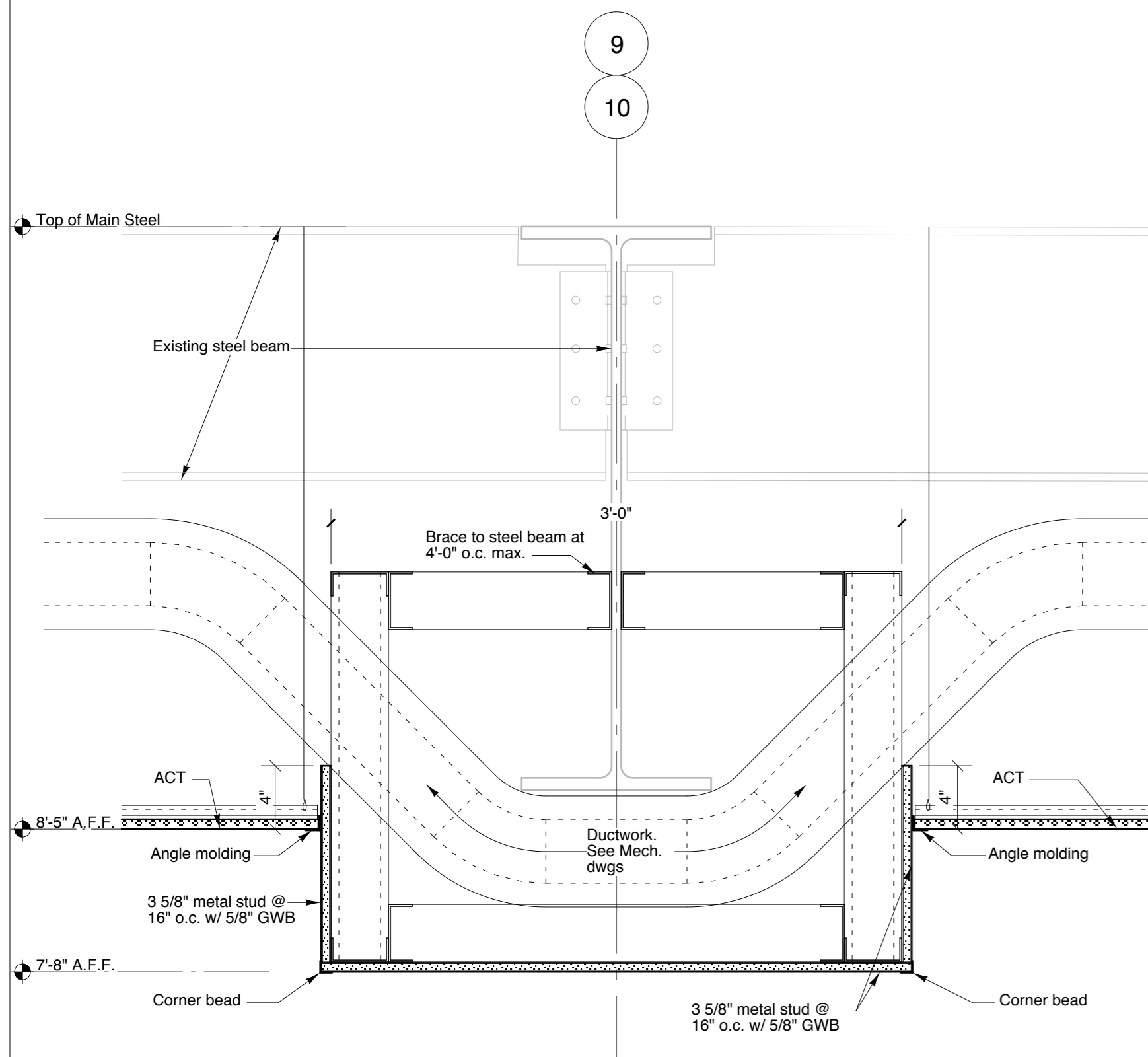
**2** Detail at New Steel Kickers  
 1 1/2" = 1'-0"



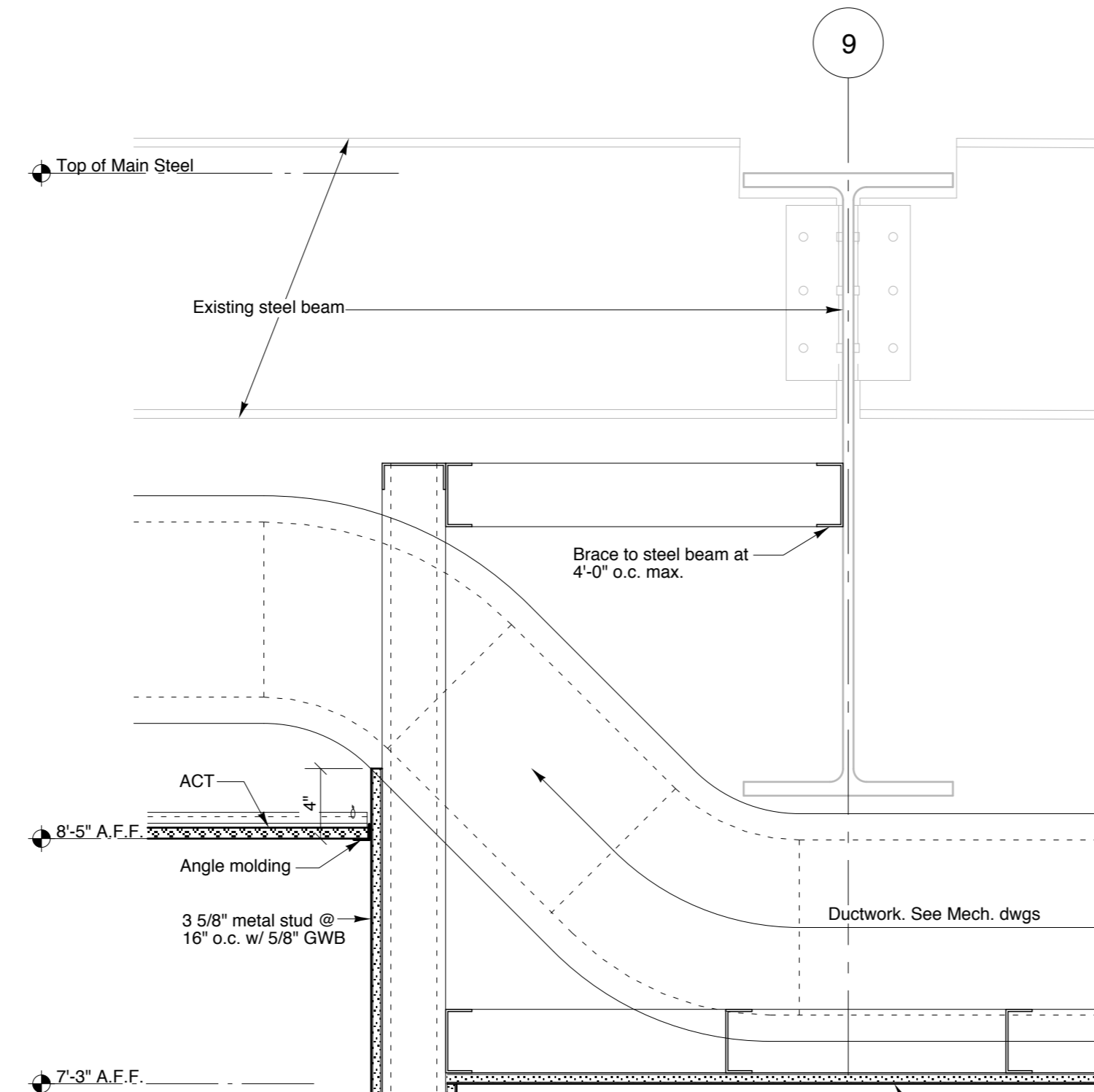
**3** Soffit Detail  
 1 1/2" = 1'-0"



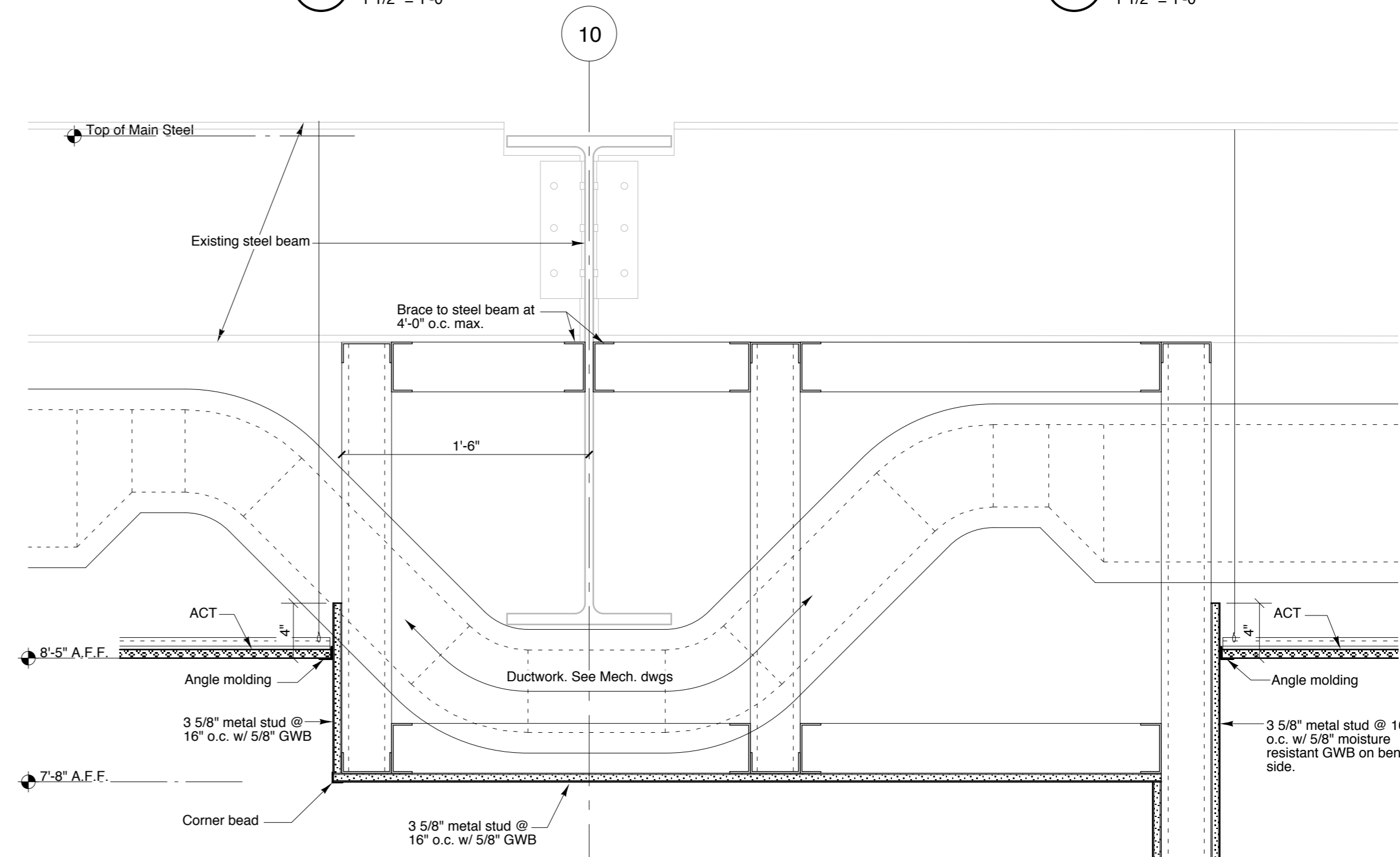
**4** Soffit Detail  
 1 1/2" = 1'-0"



**5** Soffit Detail  
 1 1/2" = 1'-0"



**6** Soffit Detail  
 1 1/2" = 1'-0"



**7** Soffit Detail  
 1 1/2" = 1'-0"