



City of Portland
PUBLIC SAFETY BUILDING
 Crime Lab Project

Winton Scott Architects
 5 Milk Street
 Portland, ME 04101

Becker Structural Engineers, Inc.
 75 York Street
 Portland, Maine 04101

Mechanical Systems Engineers
 10 Royal River Center
 Yarmouth, Maine 04096

Bartlett Design
 942 Washington St.
 Bath, ME 04530

ALT. #1 INTERIOR
 ELEVS. & DETAILS /
 DOOR SCHEDULE
 & DETAILS

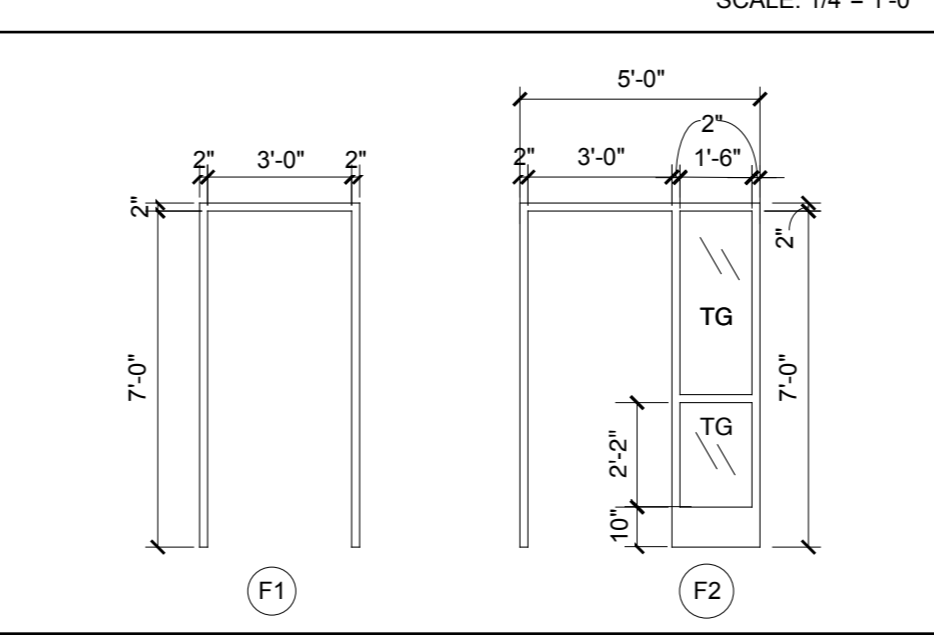
A13

DOOR & FRAME SCHEDULE

General			Door			Frame			Details					
Door No.	Size (W x H)	Thickness	Material	Finish	Type	Material	Finish	Type	Head	Jamb	Threshold	Hardware	Label	Remarks
SECOND FLOOR														
220	3'-0" X 7'-0"	1 3/4"	SCWD	Clr. F.	A	HM	Ptd	F1	H1	J1	T34	HW3	--	
222	3'-0" X 7'-0"	1 3/4"	SCWD	Clr. F.	A	HM	Ptd	F1	H1	J1	--	HW4	--	
224	PR 3'-0" X 7'-0"	1 3/4"	SCWD	Clr. F.	B	HM	Ptd	F1	H1	J1	T3	HW4	--	
225	3'-0" X 7'-0"	1 3/4"	SCWD	Clr. F.	A	HM	Ptd	F1	H1	J1	--	HW3	--	
226	3'-0" X 7'-0"	1 3/4"	SCWD	Clr. F.	B	HM	Ptd	F1	H1	J1	--	HW1	--	
227	3'-0" X 7'-0"	1 3/4"	SCWD	Clr. F.	B	HM	Ptd	F1	H1	J1	--	HW1	--	
228	3'-0" X 7'-0"	1 3/4"	SCWD	Clr. F.	C	HM	Ptd	F2	H1	J1	--	HW1	--	
229	3'-0" X 7'-0"	1 3/4"	SCWD	Clr. F.	A	HM	Ptd	F1	H1	J1	T3	HW3	--	
230	3'-0" X 7'-0"	1 3/4"	SCWD	Clr. F.	B	HM	Ptd	F1	H1	J1	T1	HW1	--	
231	3'-0" X 7'-0"	1 3/4"	SCWD	Clr. F.	A	HM	Ptd	F1	H1	J1	T1	HW2	--	
232	3'-0" X 7'-0"	1 3/4"	SCWD	Clr. F.	A	HM	Ptd	F1	H1	J1	T1	HW2	--	
233	3'-0" X 7'-0"	1 3/4"	SCWD	Clr. F.	A	HM	Ptd	F1	H1	J1	T3	HW3	--	
235	3'-0" X 7'-0"	1 3/4"	SCWD	Clr. F.	A	EXISTING FRAME			H2	J2	T3	HW5	90 Min.	NEW DOOR IN EXISTING FRAME- RE-PAINT FRAME
THIRD FLOOR														
301	3'-0" X 7'-0"	1 3/4"	SCWD	Clr. F.	A	HM	Ptd	F1	H1	J1	--	HW4	--	ADD-ALTERNATE #1
301A	3'-0" X 7'-0"	1 3/4"	SCWD	Clr. F.	A	HM	Ptd	F1	H1	J1	--	HW2	--	ADD-ALTERNATE #1
302	3'-0" X 7'-0"	1 3/4"	SCWD	Clr. F.	B	HM	Ptd	F1	H1	J1	T1	HW1	--	ADD-ALTERNATE #1
303	3'-0" X 7'-0"	1 3/4"	SCWD	Clr. F.	B	HM	Ptd	F1	H1	J1	--	HW1	--	ADD-ALTERNATE #1
305	3'-0" X 7'-0"	1 3/4"	SCWD	Clr. F.	B	HM	Ptd	F1	H1	J1	--	HW7	--	DOOR TO HAVE ELECTRONIC CARD READER
306	3'-0" X 7'-0"	1 3/4"	SCWD	Clr. F.	A	HM	Ptd	F1	H1	J1	--	HW1	--	
307	3'-0" X 7'-0"	1 3/4"	SCWD	Clr. F.	A	HM	Ptd	F1	H1	J1	--	HW1	--	
308	3'-0" X 7'-0"	1 3/4"	SCWD	Clr. F.	A	HM	Ptd	F1	H1	J1	--	HW1	--	
309	3'-0" X 7'-0"	1 3/4"	SCWD	Clr. F.	B	HM	Ptd	F1	H1	J1	--	HW8	--	DOOR TO HAVE ELECTRONIC CARD READER
309A	3'-0" X 7'-0"	1 3/4"	SCWD	Clr. F.	D	HM	Ptd	F1	H1	J1	--	HW6	--	DOOR TO HAVE 18" x 12" LOUVER
309B	3'-0" X 7'-0"	1 3/4"	SCWD	Clr. F.	A	HM	Ptd	F1	H1	J1	--	HW6	--	DOOR TO HAVE 3/4" UNDERCUT
309C	3'-0" X 7'-0"	1 3/4"	SCWD	Clr. F.	A	HM	Ptd	F1	H1	J1	--	HW6	--	DOOR TO HAVE 3/4" UNDERCUT
309D	3'-0" X 7'-0"	1 3/4"	SCWD	Clr. F.	A	HM	Ptd	F1	H1	J1	--	HW6	--	DOOR TO HAVE 3/4" UNDERCUT
309E	3'-0" X 7'-0"	1 3/4"	SCWD	Clr. F.	A	HM	Ptd	F1	H1	J1	--	HW6	--	DOOR TO HAVE 3/4" UNDERCUT
309F	3'-0" X 7'-0"	1 3/4"	SCWD	Clr. F.	A	HM	Ptd	F1	H1	J1	--	HW6	--	DOOR TO HAVE 3/4" UNDERCUT
309G	3'-0" X 7'-0"	1 3/4"	SCWD	Clr. F.	A	HM	Ptd	F1	H1	J1	T4	HW6	--	DOOR TO HAVE 3/4" UNDERCUT
309H	3'-0" X 7'-0"	1 3/4"	SCWD	Clr. F.	A	HM	Ptd	F1	H1	J1	T4	HW6	--	DOOR TO HAVE 3/4" UNDERCUT
310	3'-0" X 7'-0"	1 3/4"	SCWD	Clr. F.	A	HM	Ptd	F1	H3	J3	T2	HW5	90 Min.	
311	3'-0" X 7'-0"	1 3/4"	SCWD	Clr. F.	A	HM	Ptd	F1	H1	J1	--	HW3	--	
312	3'-0" X 7'-0"	1 3/4"	SCWD	Clr. F.	A	HM	Ptd	F1	H4	J4	--	HW3	--	
313	3'-0" X 7'-0"	1 3/4"	SCWD	Clr. F.	B	HM	Ptd	F1	H1	J1	T1	HW1	--	
313.1	3'-0" X 7'-0"	1 3/4"	SCWD	Clr. F.	B	HM	Ptd	F1	H1	J1	T1	HW8	--	DOOR TO HAVE ELECTRONIC CARD READER
314	3'-0" X 7'-0"	1 3/4"	SCWD	Clr. F.	A	HM	Ptd	F1	H1	J1	T2	HW3	--	

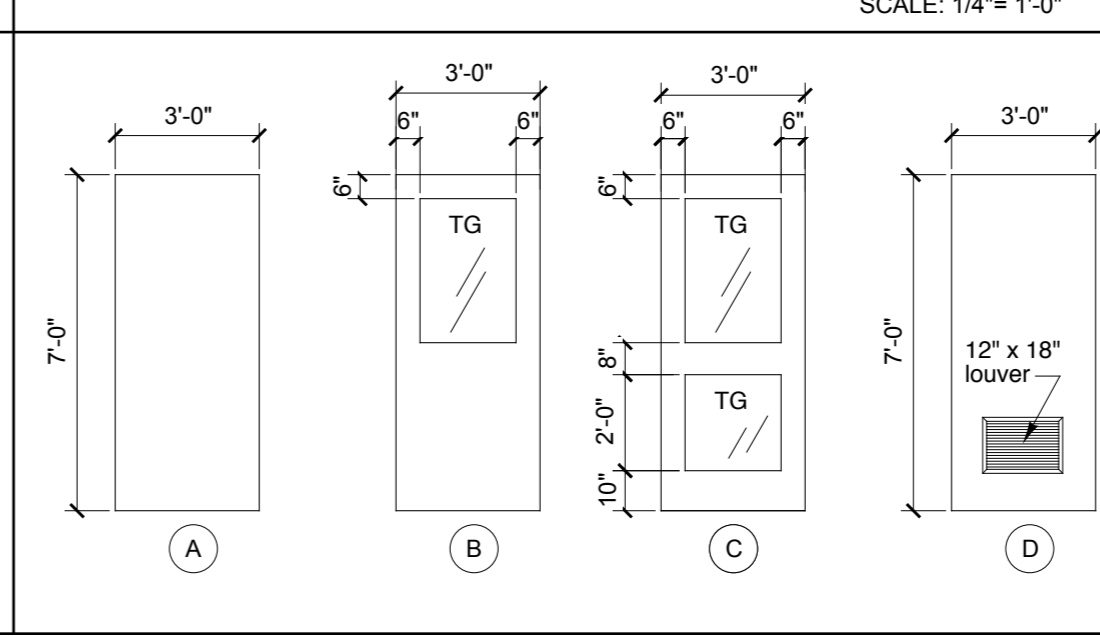
FRAME TYPES

SCALE: 1/4" = 1'-0"



DOOR TYPES

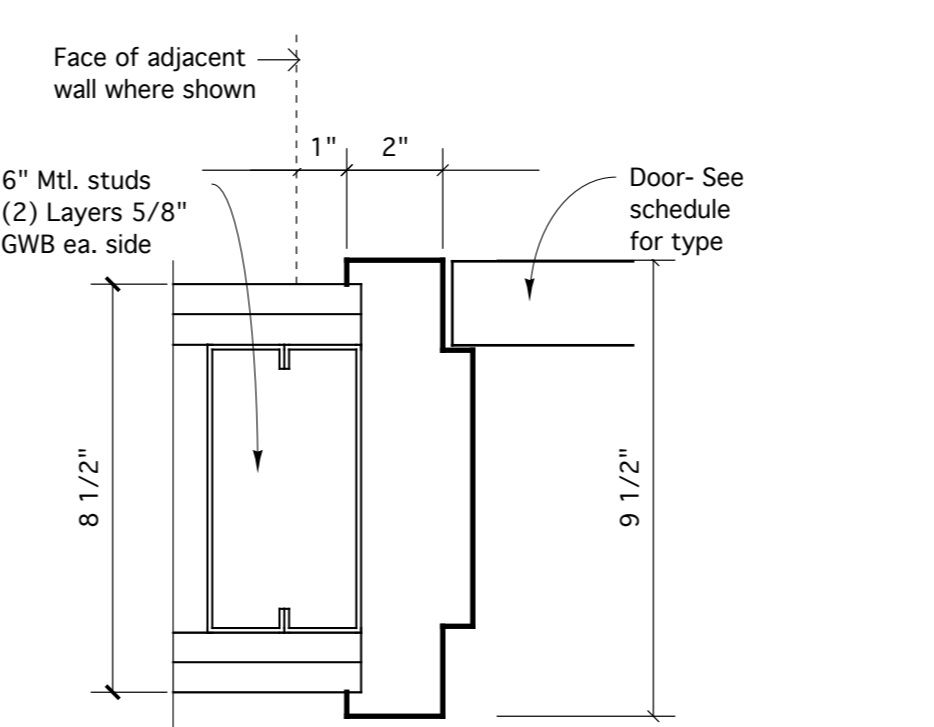
SCALE: 1/4" = 1'-0"



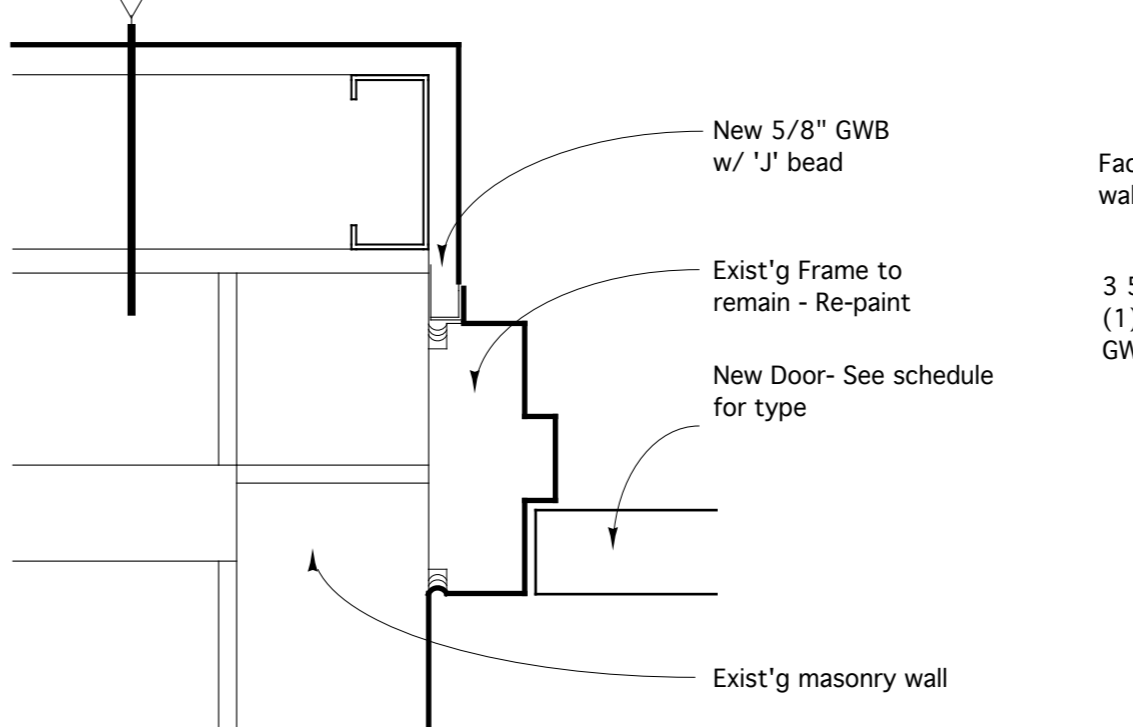
ABBREVIATIONS

- WD.....Wood
- PR.....Pair
- HM.....Hollow Metal
- SCWD.....Solid Core Wood Door
- INSUL/ HM.....Insulated Hollow Metal
- PTD.....Painted
- CLR. F.....Clear Finish
- FF.....Factory Finish
- TG.....Tempered Glass
- WG.....Wired Glass
- V.I.F.Verify in Field

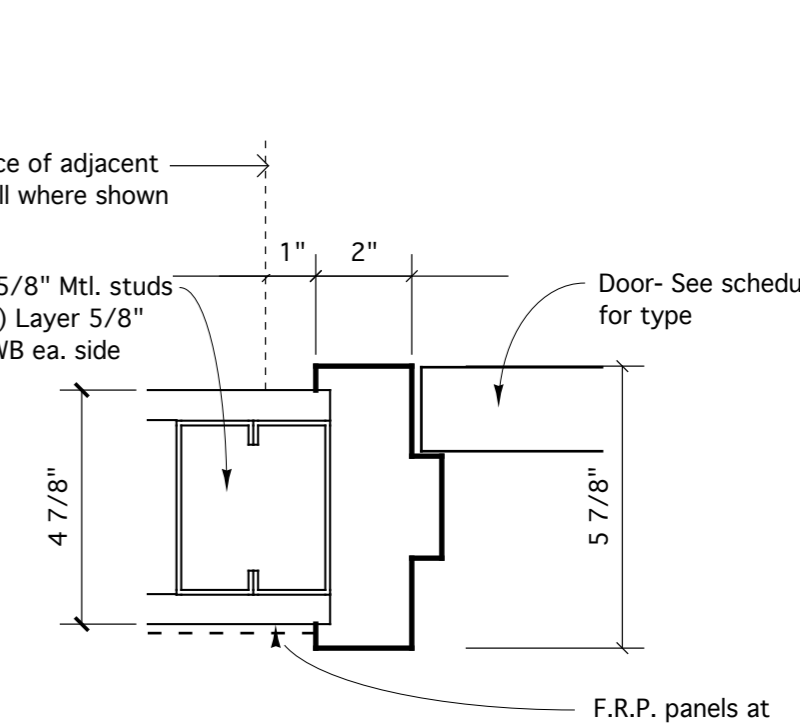
FRAME TYPES



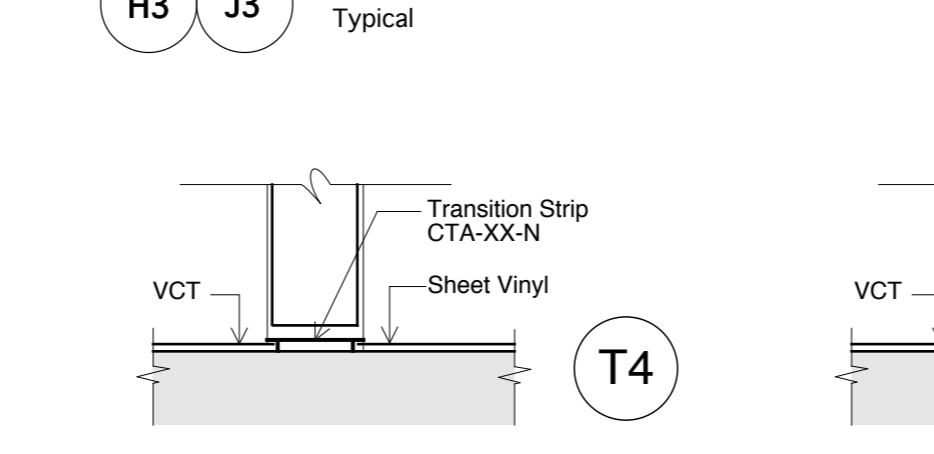
DOOR TYPES



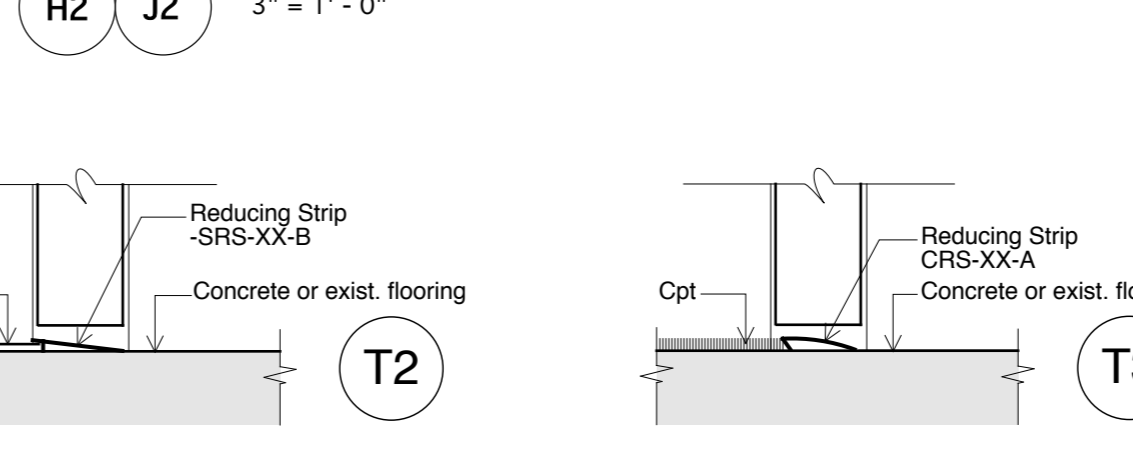
DOOR TYPES



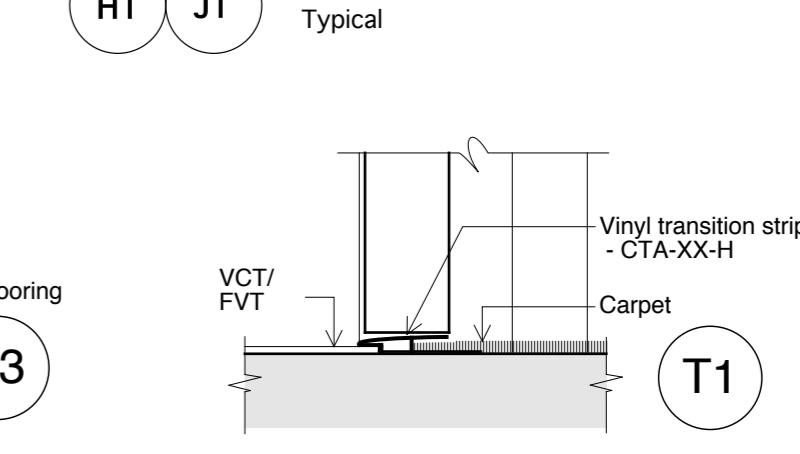
FRAME TYPES



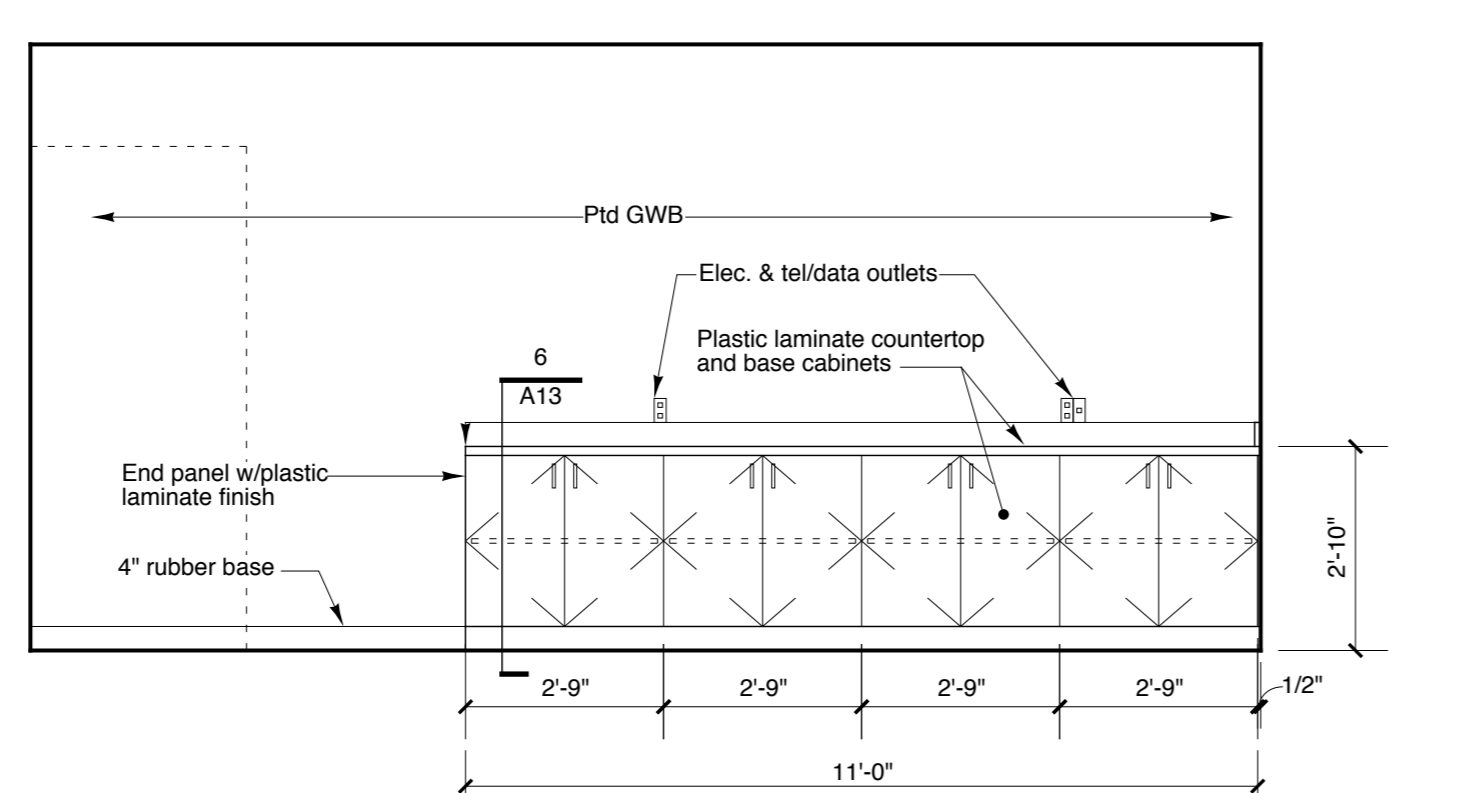
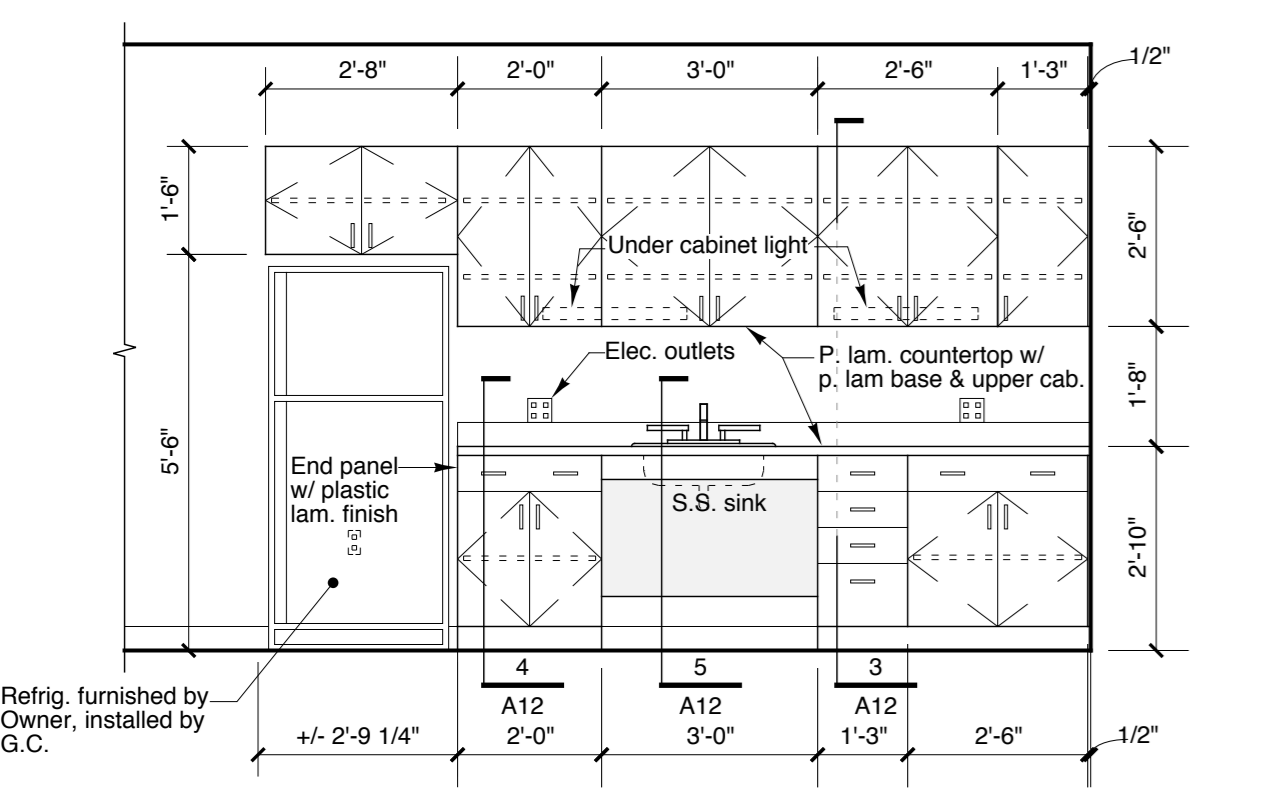
DOOR TYPES



DOOR TYPES



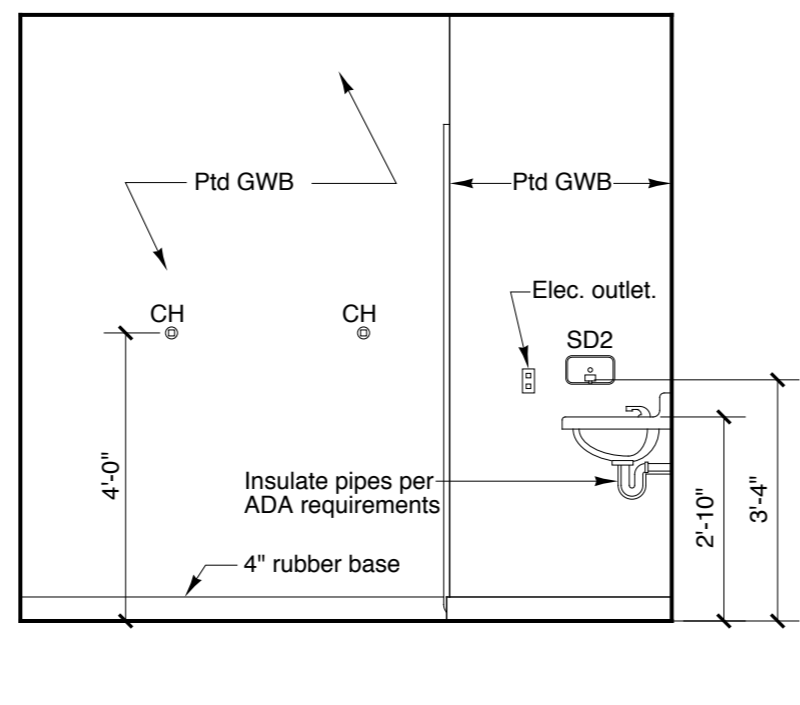
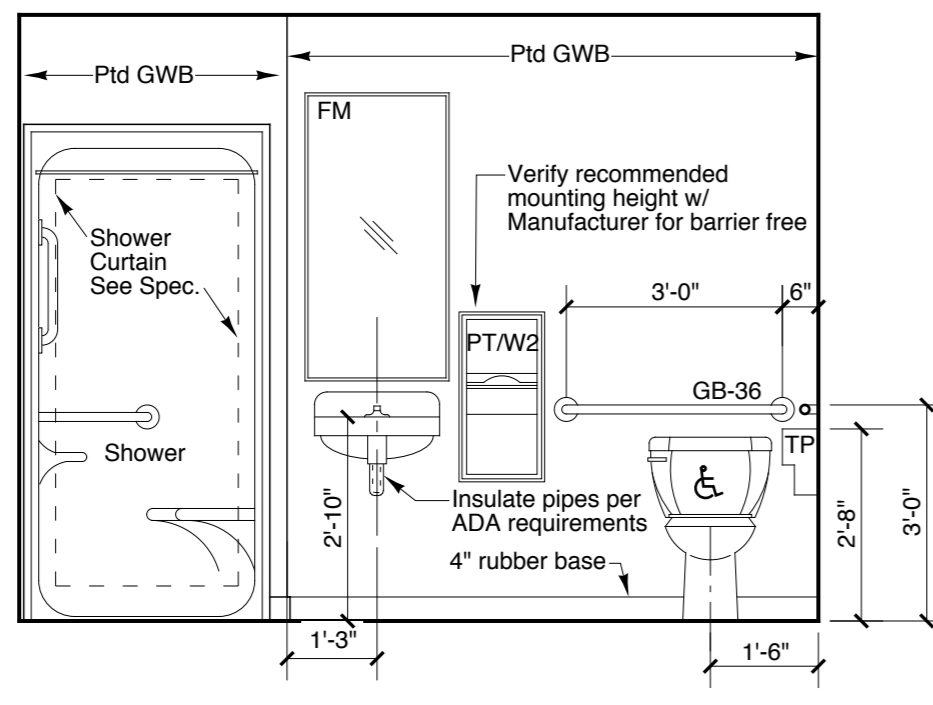
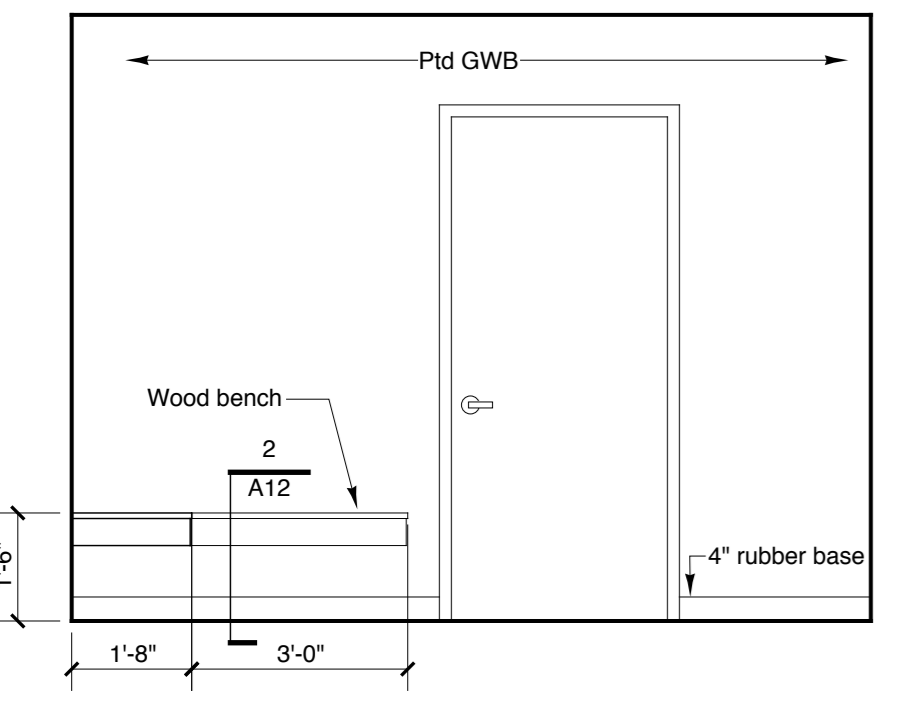
DOOR TYPES



1 Lunch Room 303
3/8" = 1'-0" ALTERNATE #1

2 Conference Room 302
3/8" = 1'-0" ALTERNATE #1

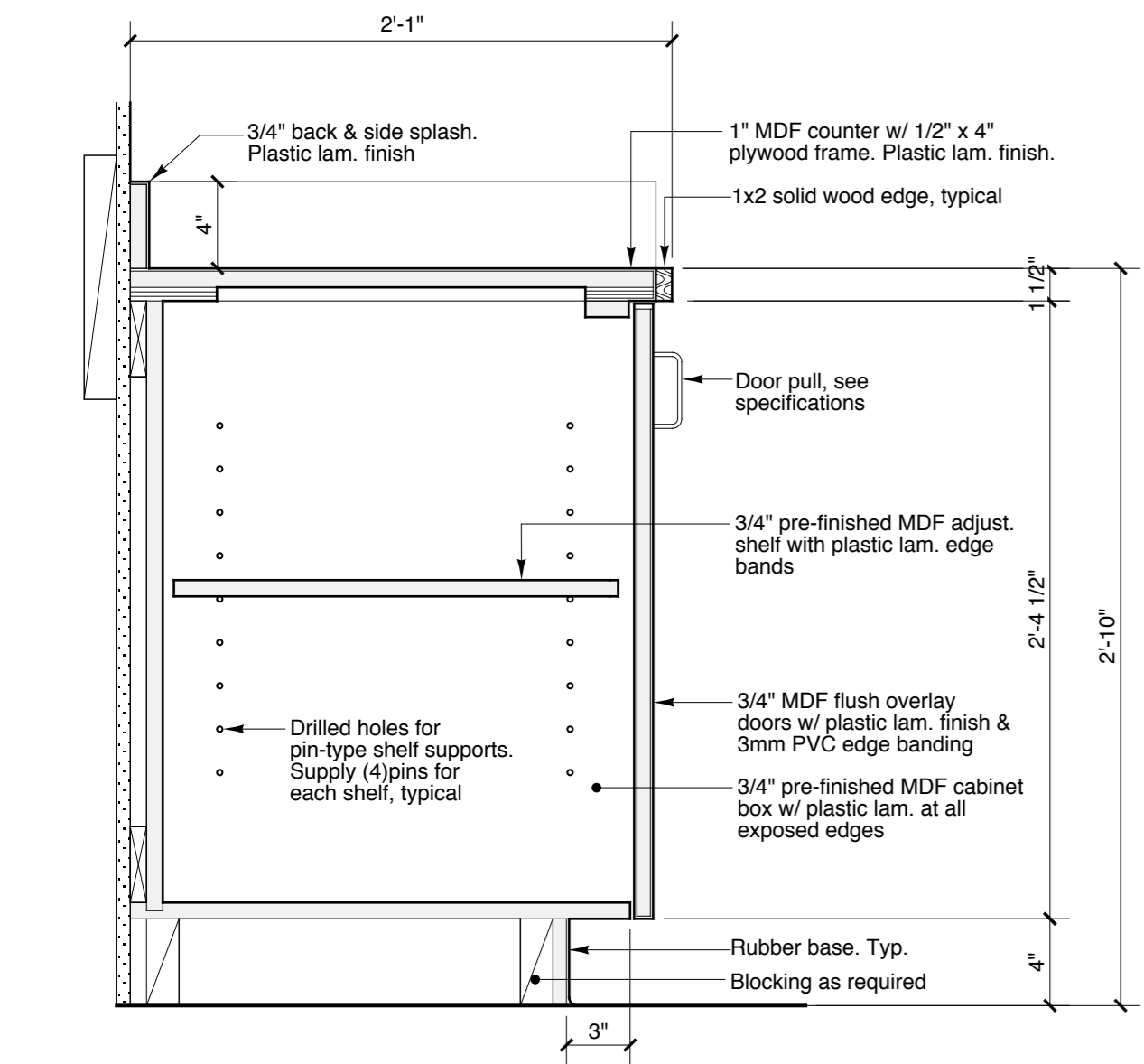
ALTERNATE #1



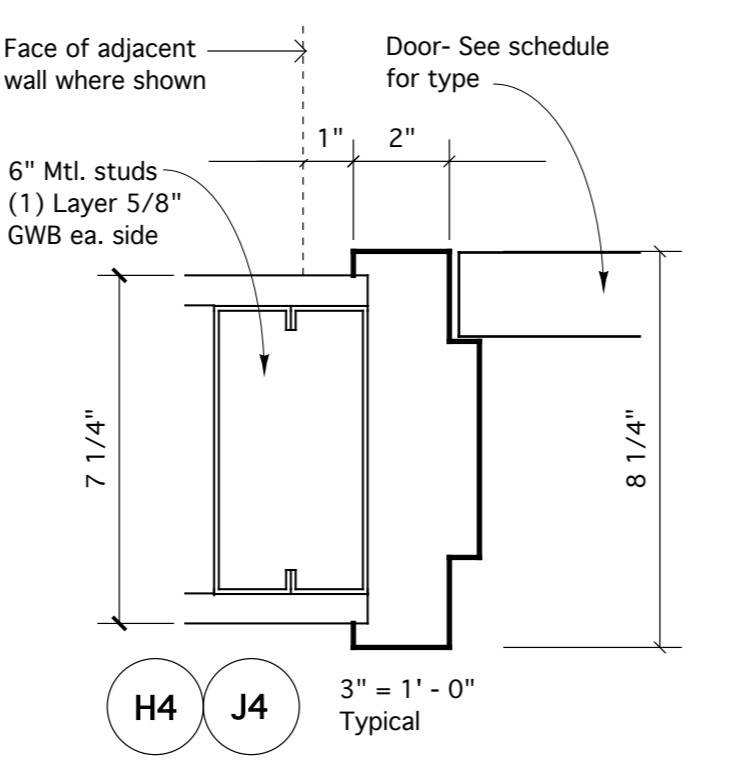
3 Locker Room 301
3/8" = 1'-0" ALTERNATE #1

4 Shower Room 301-A
3/8" = 1'-0" ALTERNATE #1

5 Shower Room 301-A
3/8" = 1'-0" ALTERNATE #1



6 Base Cabinet Detail
1 1/2" = 1'-0" ALTERNATE #1



- LEGEND** See specifications for toilet accessories
- M.....Frameless mirror w/ polished edges
 - FM.....24"x48" framed mirror
 - GB-42.....42" grab bar
 - GB-36.....36" grab bar
 - PT/W1.....Semi- recessed mounted paper towel dispenser/ waste receptacle
 - PT/W2.....Surface mounted paper towel dispenser/ waste receptacle
 - TP.....Surface mounted toilet paper dispenser
 - SD1.....Counter mounted soap dispenser
 - SD2.....Wall mounted soap dispenser
 - CH.....Coak hook