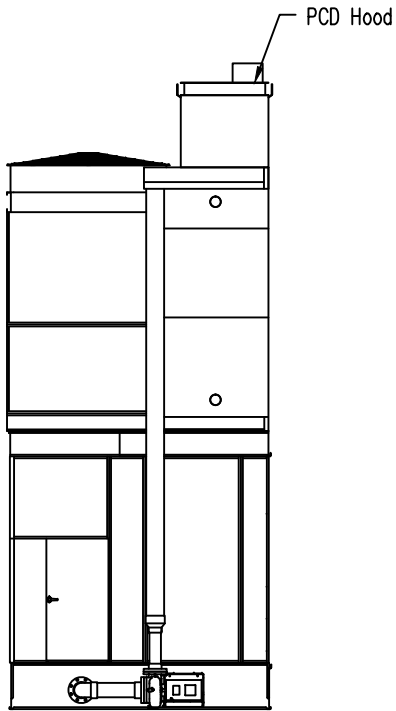
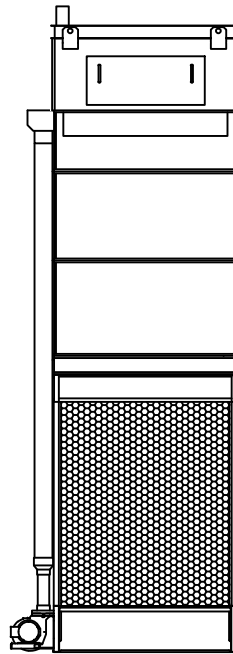


Notes

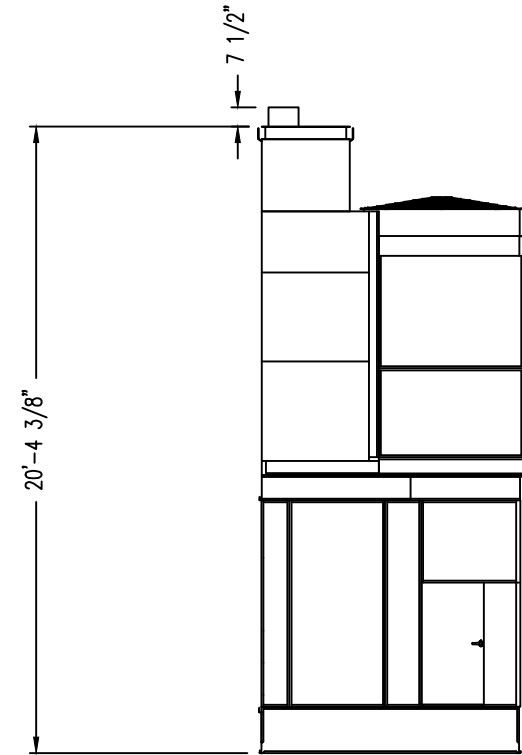
- 1) All Dimensions are in feet and inches. All weights are in pounds.
- 2) This drawing is not indicative of the specific configuration of the unit. Please refer to the unit print and other supporting drawings for configuration details.
- 3) Field piping must be kept clear and supported independently of unit and all access options.
- 4) Connections and pump location on drawing are for unit orientation only and do not reflect actual order. Refer to the unit print for actual connection location.
- 5) PCD hood ships seperately for field installation.



Connection End



Air Inlet Side



Model Number	Shipping Weight	Operating Weight	Heaviest Section
FXV-0806B-24D-H	6872	10030	4306

ORDER NO: **U150762301**

DATE: **3/6/2015 1:25:11 PM**



**BALTIMORE
 AIRCOIL COMPANY**

8.5 X 6 Accessories

DRAWING NUMBER:
EA-U150762301