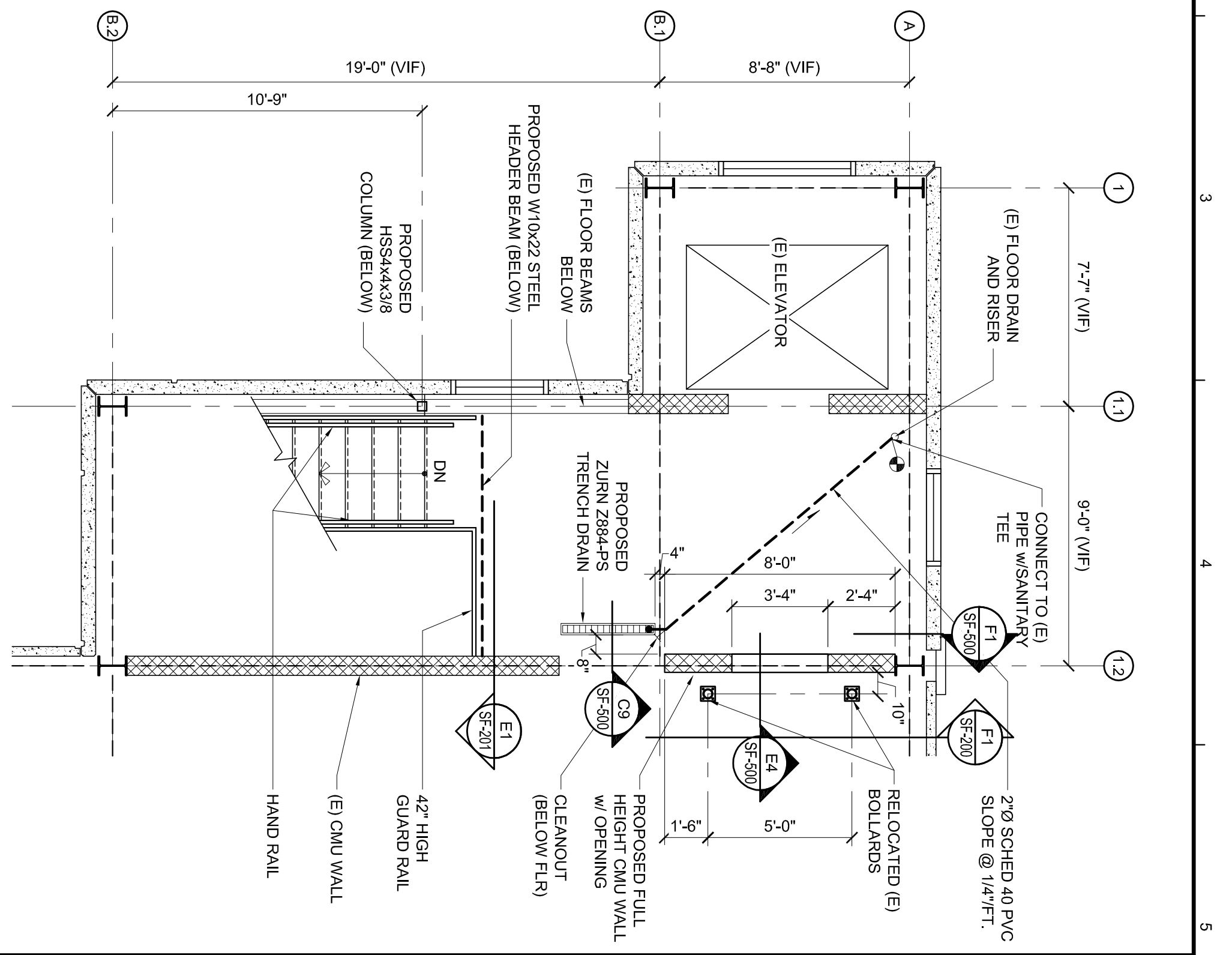


F1 ELEVATION
1/4" = 1'-0"

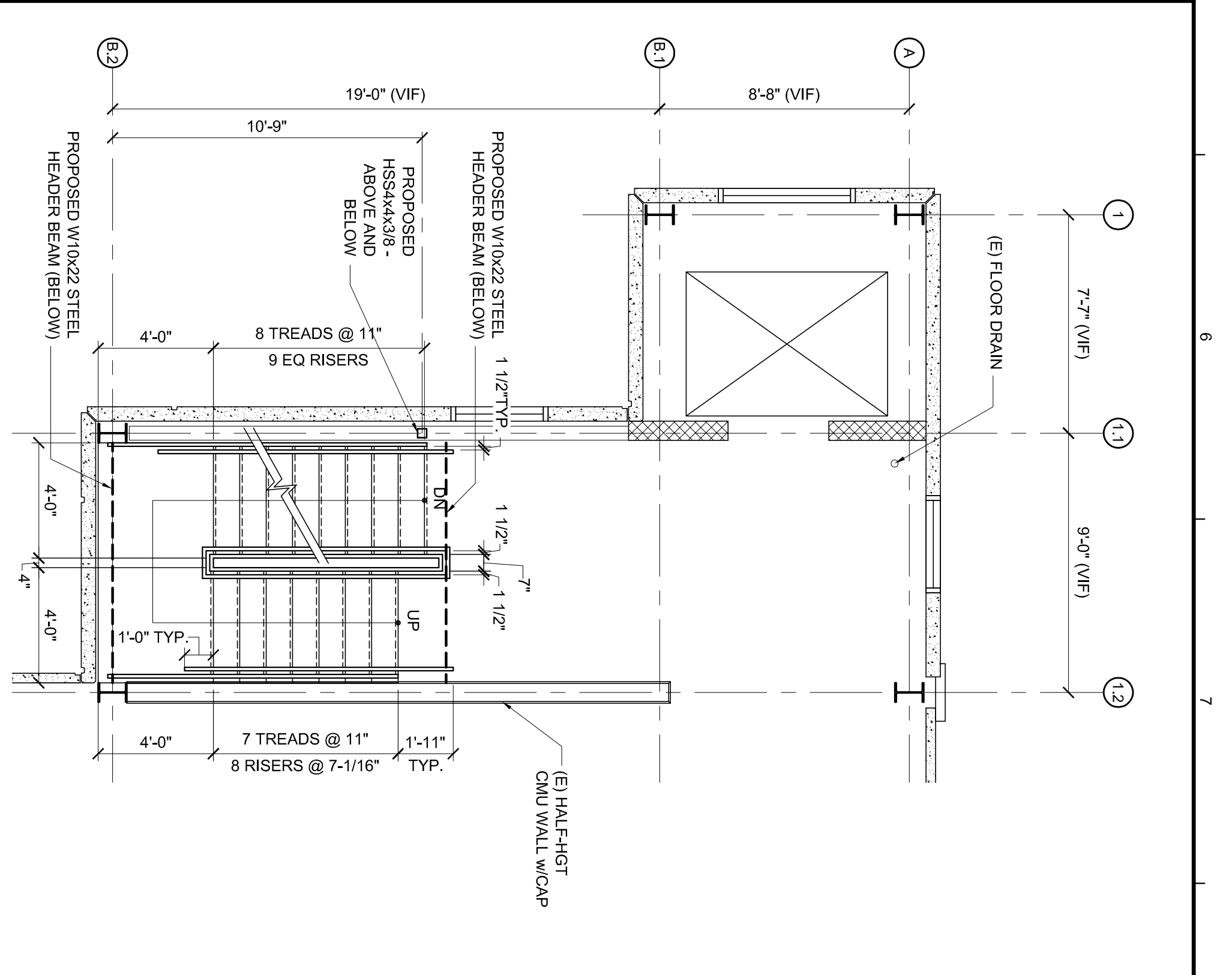
1. INSTALL DRAIN SPRING IN STRICT ACCORDANCE WITH MAINE STATE PLUMBING CODE AND LOCAL AUTHORITIES HAVING JURISDICTION.
2. REFER TO DRAWING SF-201 FOR STAIR ELEVATIONS AND DETAILS

E1 STAIR PLAN NOTES

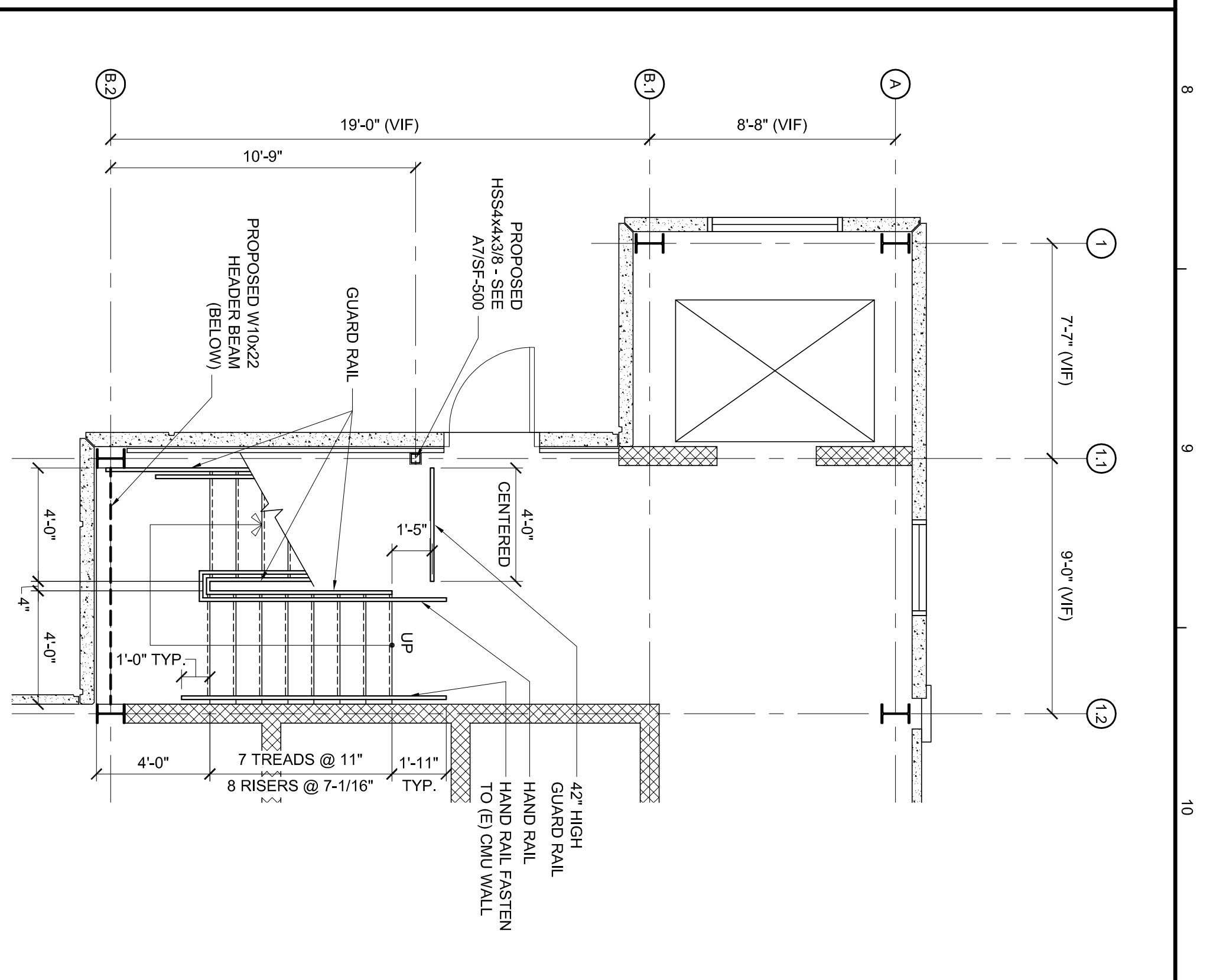
- 1 REMOVE (E) GUARD RAIL AND CONNECTION MATERIAL TO (E) SLAB
- 2 REMOVE (E) STAIR FRAMING, METAL PANS AND CONCRETE TREADS. REFER TO A8/SF-201 FOR STEEL HEADER REMOVAL
- 3 SAW-CUT AND REMOVE A PORTION OF (E) SLAB, REFER TO DETAIL E7/SF-201
- 4 SAW-CUT AND REMOVE A PORTION OF CONCRETE TOPPING. REFER TO DETAIL G9/SF-500
- 5 REMOVE AND RELOCATE (E) BOLLARDS. BOLLARD AND BASE SHALL BE CLEANED AND PAINTED PER SPEC. REFER TO DETAIL E4/SF-500 FOR RE-ATTACHMENT.



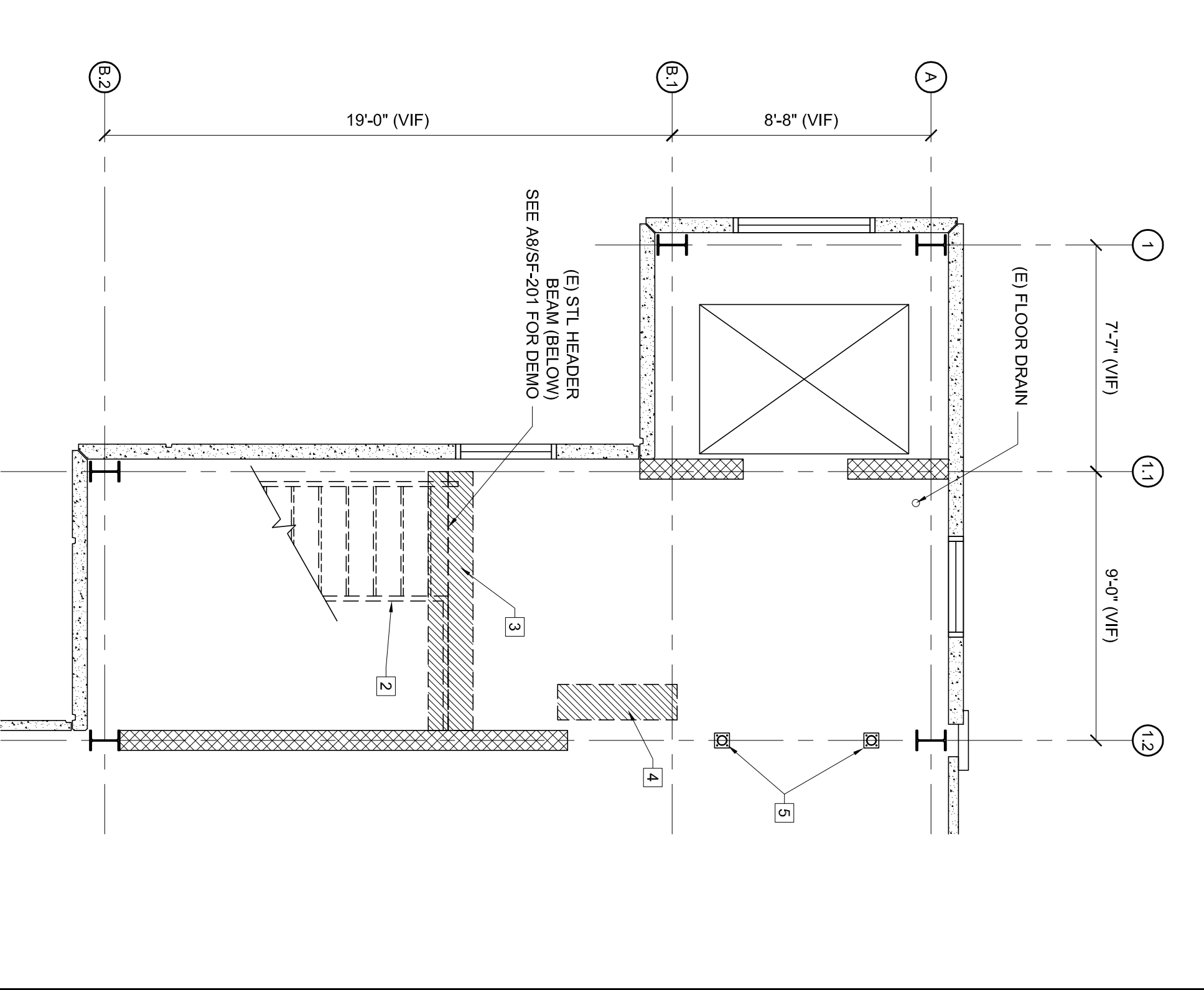
E3 STAIR #1 FLOOR PLAN @ LEVEL 5
1/4" = 1'-0" PROPOSED



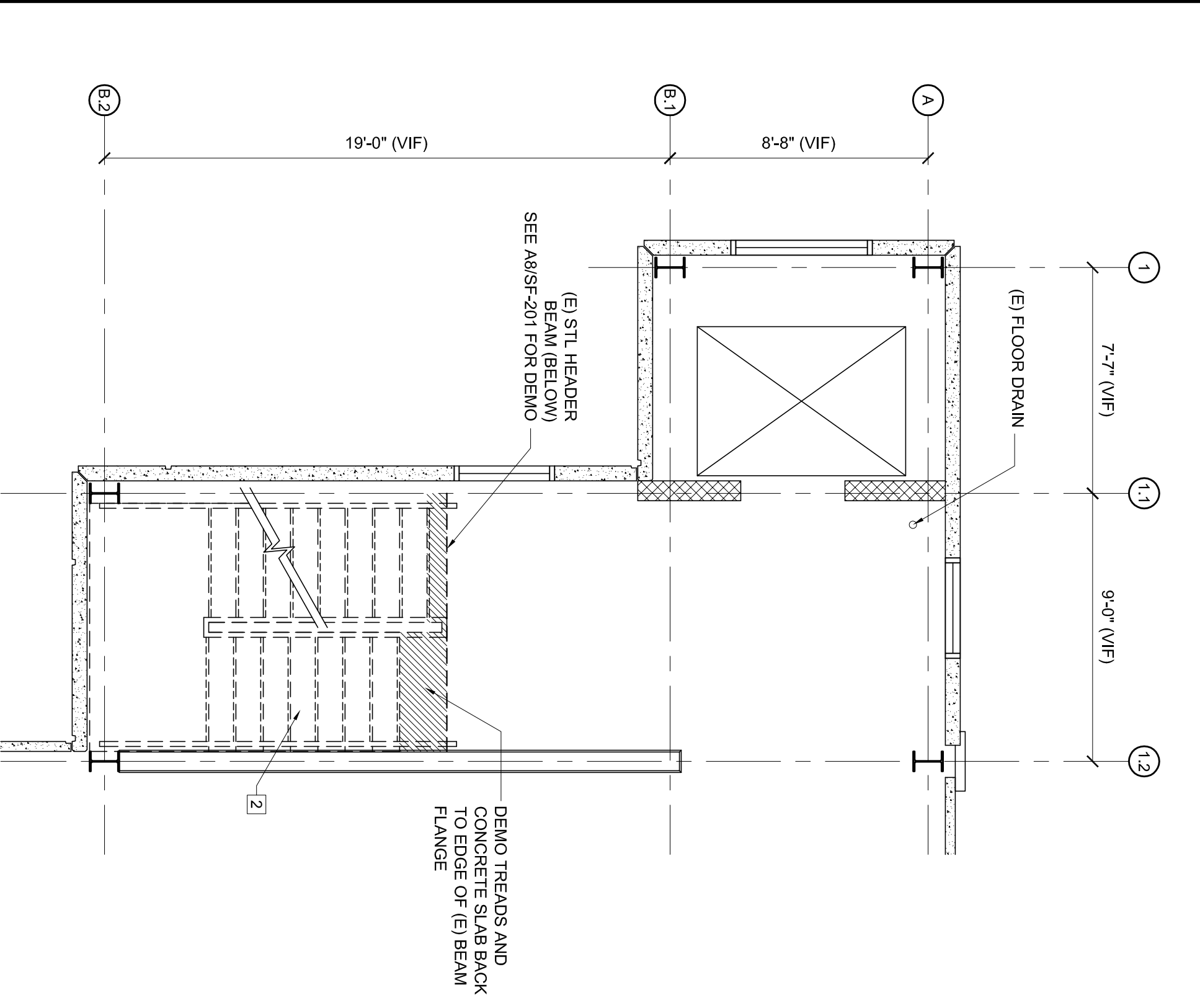
E5 STAIR #1 FLOOR PLAN @ LEVEL 2, 3 AND 4
1/4" = 1'-0" PROPOSED



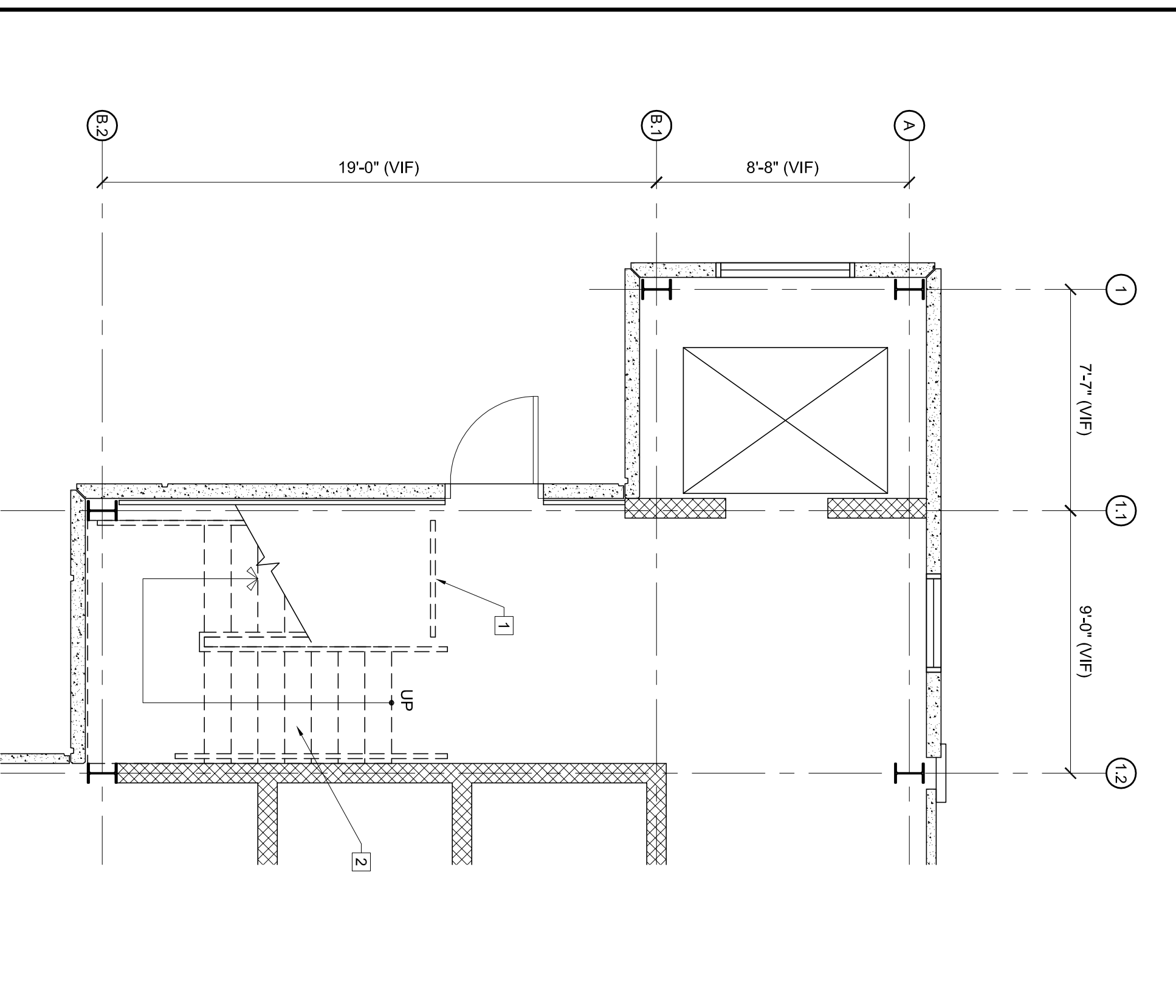
E8 STAIR #1 FLOOR PLAN @ LEVEL 1
1/4" = 1'-0" PROPOSED



A3 STAIR #1 DEMOLITION PLAN @ LEVEL 5
1/4" = 1'-0"



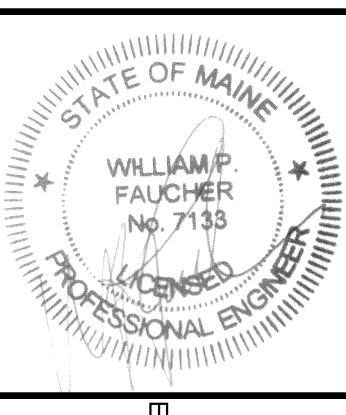
A5 STAIR #1 DEMOLITION PLAN @ LEVEL 2, 3 AND 4
1/4" = 1'-0"



A8 STAIR #1 DEMOLITION PLAN @ LEVEL 1
1/4" = 1'-0"

A1 STAIR #1 DEMOLITION PLAN @ LEVEL 5

REVISIONS			
NUMBER	DATE	BY	DESCRIPTION



Allied Engineering
Structural Mechanical Electrical Commissioning

160 Veranda Street
Portland, Maine 04103
T: 207.221.2260
F: 207.221.2266
Web: www.allied-eng.com

SF-200

STAIR #1
DEMO AND PROPOSED PLANS

CUMBERLAND COUNTY COURTHOUSE
PARKING GARAGE REPAIRS
PORTLAND, MAINE

Date: 11-19-2009
Drawn By: PED
Checked By: WPF
Project Mgr: WPF
Project No: 08067
Cad File: 08067S.DWG

© COPYRIGHT 2008 ALLIED ENGINEERING, INC.