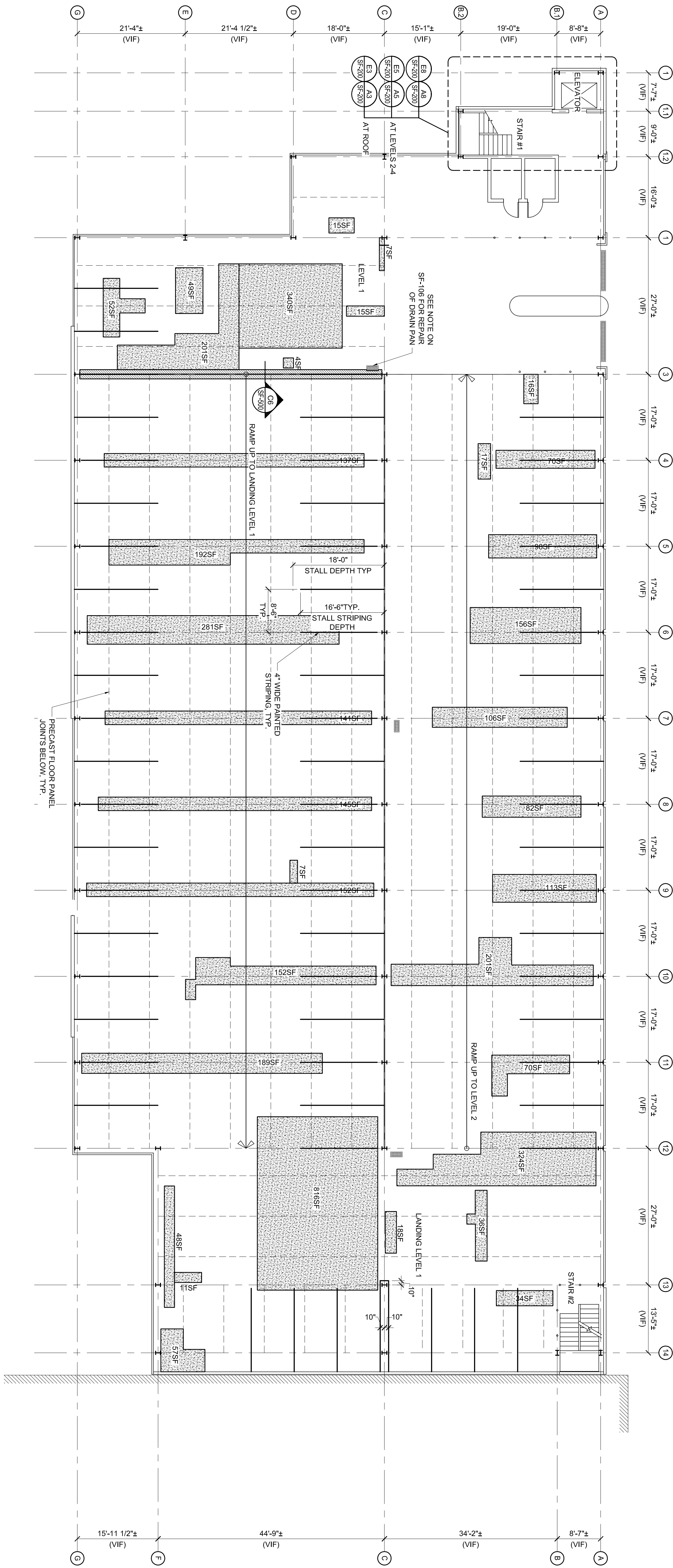


- PLAN NOTES (DRAWING SF-101):**
1. FIELD VERIFY EXISTING CONDITIONS PRIOR TO STARTING WORK. NOTIFY ENGINEER OF ANY INACCURACIES.
 2. REFER TO SPECIFICATIONS FOR PHASING REQUIREMENTS.
 3. CONTRACTOR VERIFY LOCATION OF EXISTING CONDUIT BURIED IN 3-1/2" CONCRETE TOPPING LAYER. CONDUIT SHALL BE RE-ROUTED PRIOR TO REPAIRS AT THE DISCRETION AND EXPENSE OF THE OWNER.



G7	LEGEND	<p>AREA OF CONCRETE TOPPING REPAIR PER SPECIFICATION</p> <p>TRANSITION JOINT - SEE DETAIL AS NOTED</p>	G9	<p>KEY PLAN</p> <p>ISOMETRIC</p>
----	--------	--	----	----------------------------------

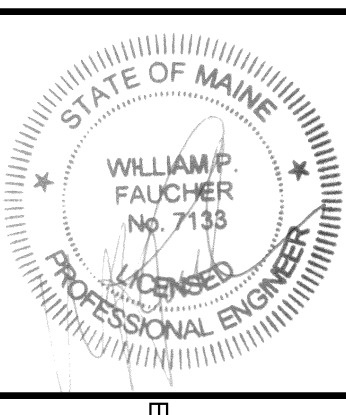
A1 FLOOR PLAN 1/16" = 1'-0"

SF-101

FIRST LEVEL PLAN

CUMBERLAND COUNTY COURTHOUSE
PARKING GARAGE REPAIRS
PORTLAND, MAINE

REVISIONS			
NUMBER	DATE	BY	DESCRIPTION



Allied Engineering
Structural Mechanical Electrical Commissioning

160 Veranda Street
Portland, Maine 04103
T: 207.221.2260
F: 207.221.2266
Web: www.allied-eng.com