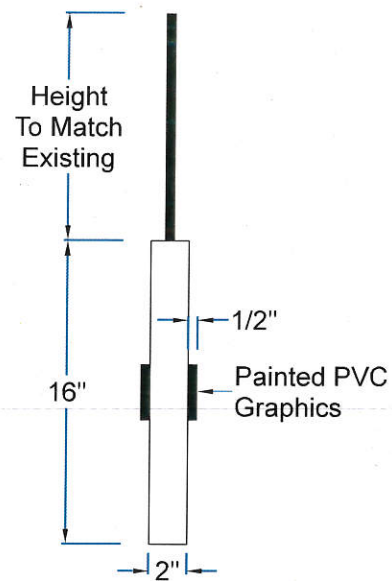


E1 Elevation: (Qty: 1) #5938.2 Double Sided Replacement Blade Sign
3" x 54" = 1.12 Sq. Ft. of Graphics



S1 Side View

Description:

- (Qty: 1) Double sided non-illuminating replacement blade sign.
- * Welded 2" x 1" aluminum tube frame with painted returns
- * Painted Dibond faces
- * Painted 1/2" PVC Graphics affixed first surface
- * Blade sign mounted to existing sign bracket with new 1/2" hanging rods and painted conduit covers

Typeface/Logo:

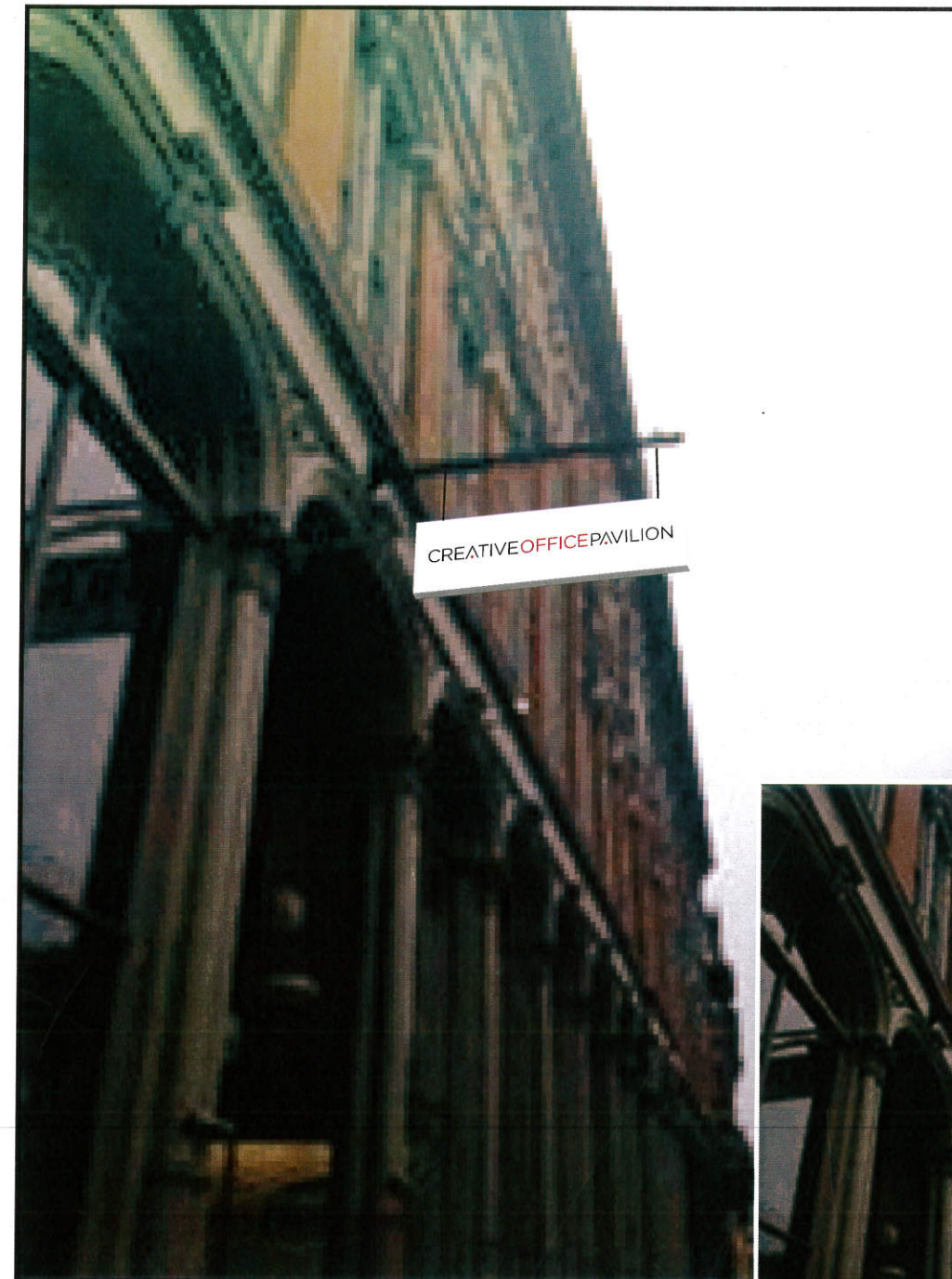
- * Art on File

Colors:

- * Sign Body - Painted White (faces & returns)
- * Graphics - Painted Black (100%)
- Painted Red PMS#199c
- * Hanging Rods - Painted Black (100%)

Installation:

- * By ViewPoint



PE Photo Elevation Views (Proposed & Existing)



Job:
Creative Office Pavilion
Location:
141 Middle St., Portland, ME

Account Manager:
Jamie Johnstone
File:
COP Portland ME blade sign 1a.plt

Date:
07.18.14 D1.25
Designer:
Pete Rivera

Revisions:

Revisions:



ViewPoint
SIGN AND AWNING

1.508.393.8200
FAX 1.508.393.4244

Customer Approval Acct. Manager Approval Production Approval

VIF