

© 2013 RYAN SENATORE ARCHITECTURE

PORTLAND HUNT AND ALPINE CLUB  
75 MARKET STREET  
PORTLAND, MAINE



RYAN SENATORE  
ARCHITECTURE  
67 GRAY ROAD  
GORHAM, MAINE 04038  
207-650-6414  
senatorearchitecture.com

CONSULTANTS:

REVISIONS:

DATE: MAY 9, 2013

PROJECT No.

DRAWN BY:

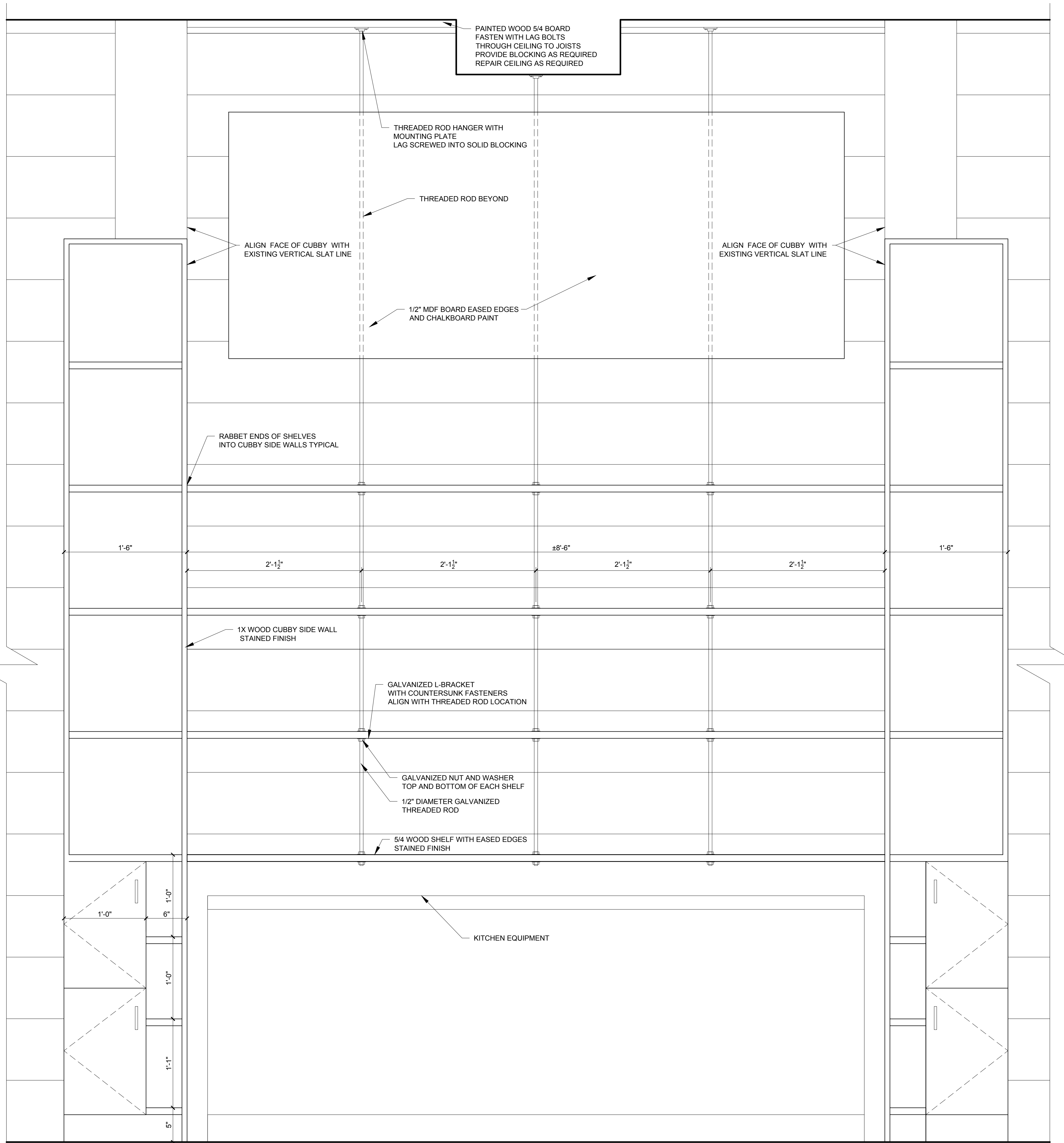
CHECKED BY: RJS

SCALE: AS NOTED

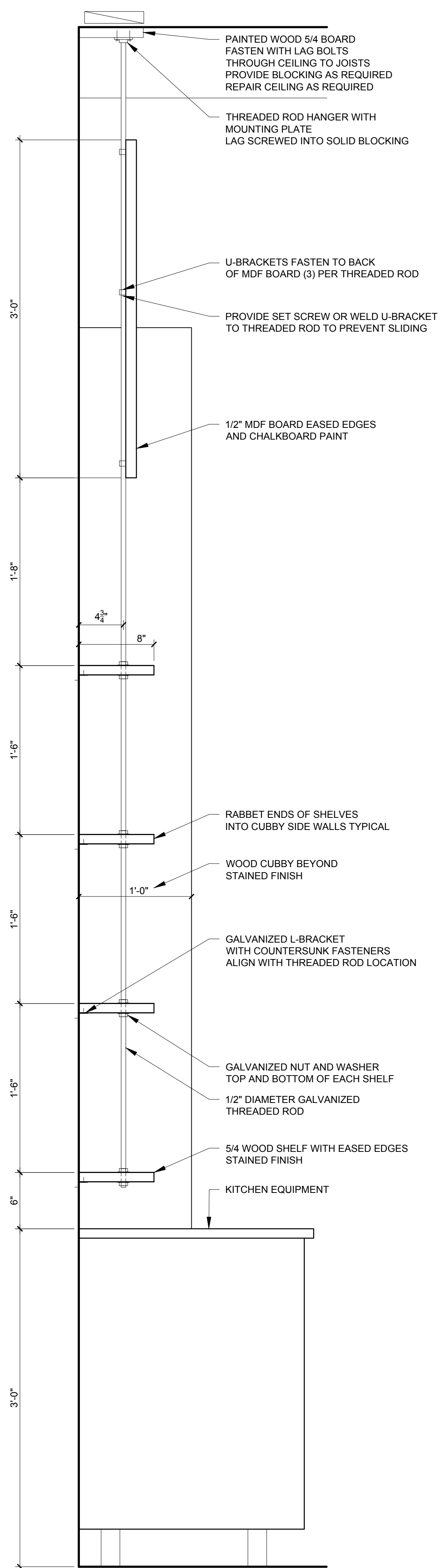
SHEET TITLE:

DETAILS

A3-1



1 BACK BAR SHELVING ELEVATION DETAIL  
1 1/2" = 1'-0"



2 BACK BAR SHELVING SECTION DETAIL  
1 1/2" = 1'-0"