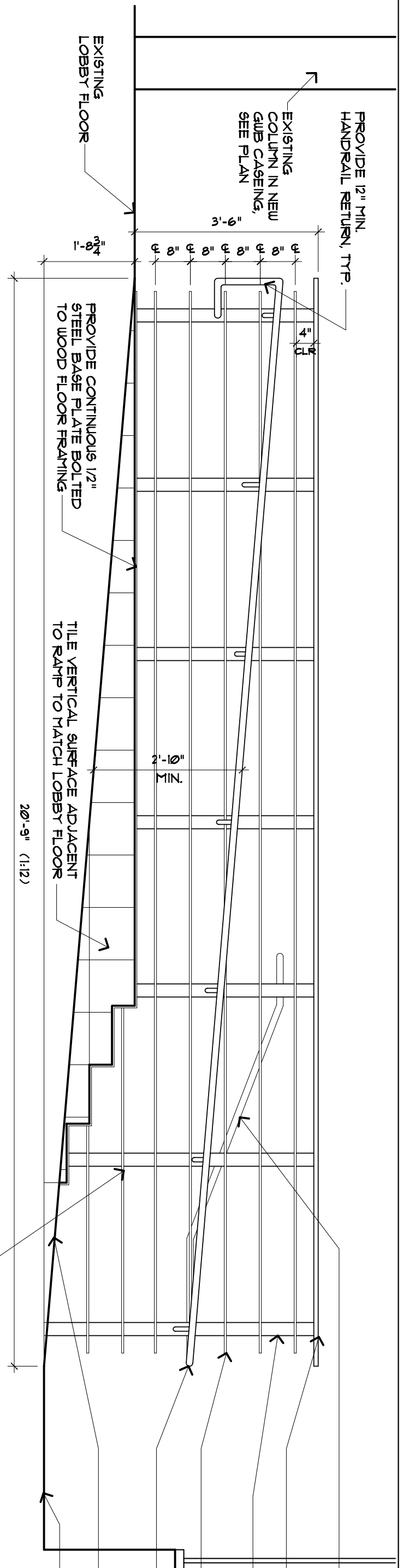
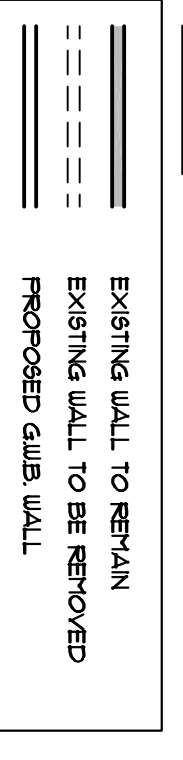


ACCESSIBLE RAMP ELEVATION A'  
SCALE: 1/2"=1'-0"



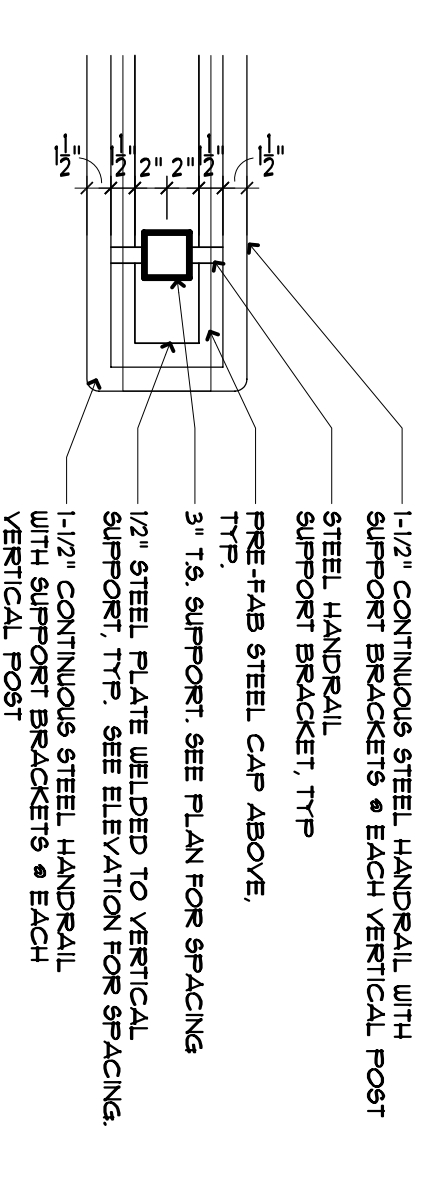
ACCESSIBLE RAMP ELEVATION B'  
SCALE: 1/2"=1'-0"

- GENERAL NOTES:**
1. EXISTING WALLS TO BE REMOVED SHALL BE CONFORM WITH ALL APPLICABLE CODES AND SHALL BE NOT LIMITED TO THE LATEST EDITIONS OF IBC, NFPA 90A, 90B, 903, 904, 905, 906, 907, 908, 909, 910, 911, 912, 913, 914, 915, 916, 917, 918, 919, 920, 921, 922, 923, 924, 925, 926, 927, 928, 929, 930, 931, 932, 933, 934, 935, 936, 937, 938, 939, 940, 941, 942, 943, 944, 945, 946, 947, 948, 949, 950, 951, 952, 953, 954, 955, 956, 957, 958, 959, 960, 961, 962, 963, 964, 965, 966, 967, 968, 969, 970, 971, 972, 973, 974, 975, 976, 977, 978, 979, 980, 981, 982, 983, 984, 985, 986, 987, 988, 989, 990, 991, 992, 993, 994, 995, 996, 997, 998, 999, 1000.
  2. CONTRACTOR SHALL WORK FROM GIVEN DIMENSIONS AND LARGE SCALE DETAILS ONLY. DO NOT SCALE THE DRAWINGS.
  3. INSTALL BLOCKING FOR SURFACE APPLIED FIXTURES FROM WHEN MOUNTED ON 8"WD WALLS, INCLUDING ALL FUTURE INSTALLATIONS.
  4. INSTALL UL FIRE-RATED SEALANT/SYSTEM EQUAL TO THE FIRE RATED FLOOR CEILING AND WALL ASSEMBLY.

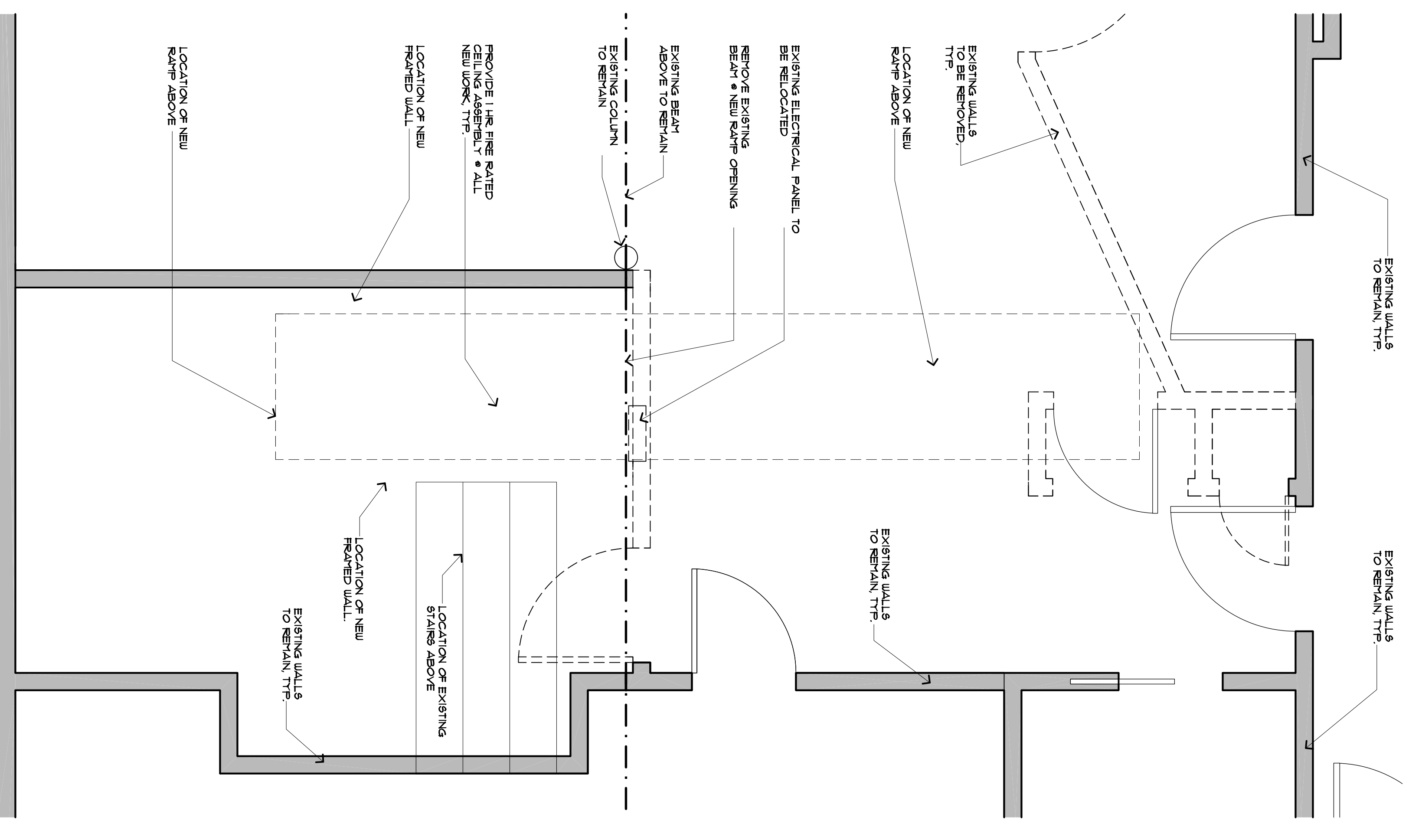


**PROJECT NOTES:**

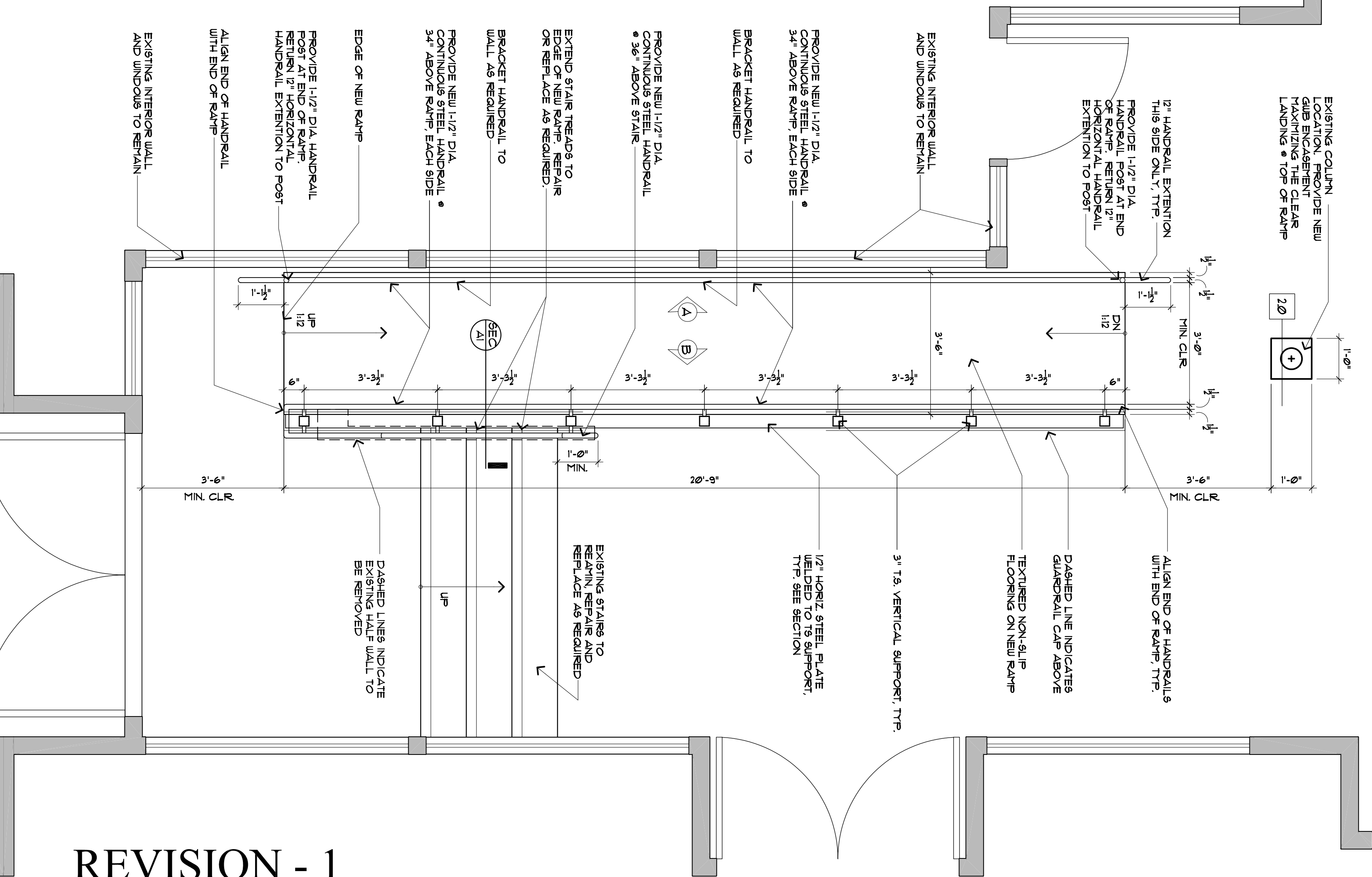
1. SCOPE OF WORK: THE PROJECT INCLUDES THE DEMOLITION OF EXISTING WALLS AND THE ADDITION OF NEW WALLS AND A NEW H.C. ACCESSIBLE RAMP W/ HANDRAILS.
2. THE NEW H.C. RAMP HAS BEEN DESIGNED TO MEET 1991 ADA.



HANDRAIL PLAN DETAIL  
SCALE: 1"=1'-0"



BASEMENT DEMOLITION/FLOOR PLAN  
SCALE: 1/2"=1'-0"



ACCESSIBLE RAMP FLOOR PLAN  
SCALE: 1/2"=1'-0"

REVISION - 1

NO.	DATE	REVISIONS
1	APR 22, 2005	STRUCTURAL DRAWING 6.6.05

PROJECT: 75 MARKET ST.  
DRAWN BY: PM  
CHECKED BY: MAM

RENOVATION OF:  
**75 MARKET STREET - RAMP**  
75 MARKET STREET  
PORTLAND, MAINE

**M A R K MUELLER ARCHITECTS A.I.A.**

100 Commercial Street  
Suite 205  
Portland, ME 04101  
Phone: 857.774.9057  
Fax: 857.773.8851  
Email: mark@markmuellearchitects.com  
Web: www.markmuellearchitects.com

© 2005 MARK MUELLER ARCHITECTS