

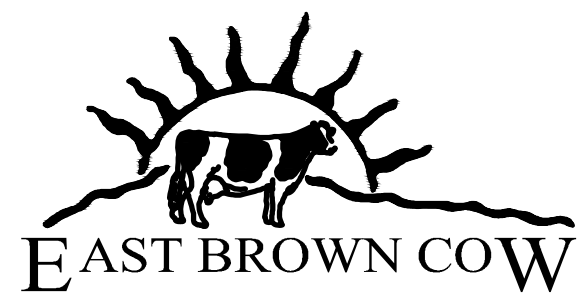
BERRY SHOE BLOCK

151 MIDDLE STREET



BERRY SHOE BLOCK

EMERY WATERHOUSE BLOCK

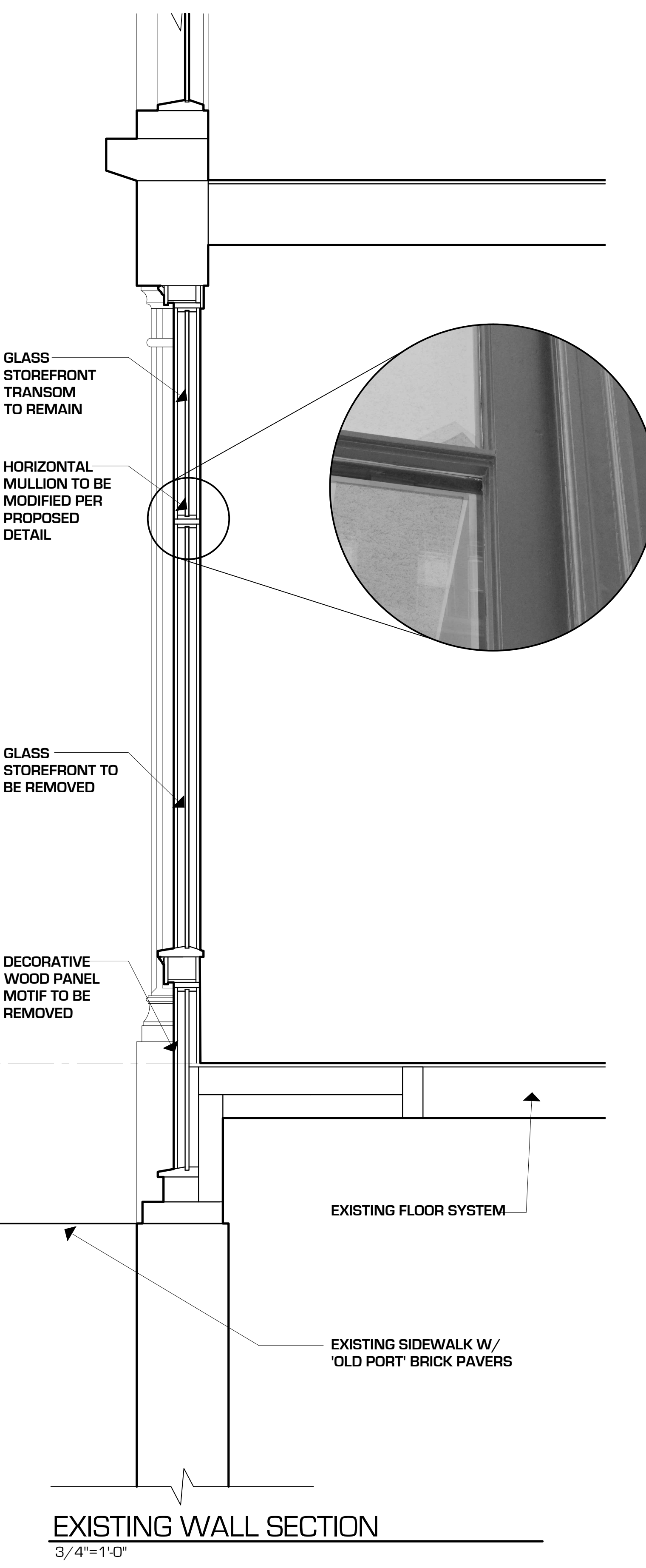


MARK
MUELLER
ARCHITECTS

HISTORIC PRESERVATION PROPOSAL

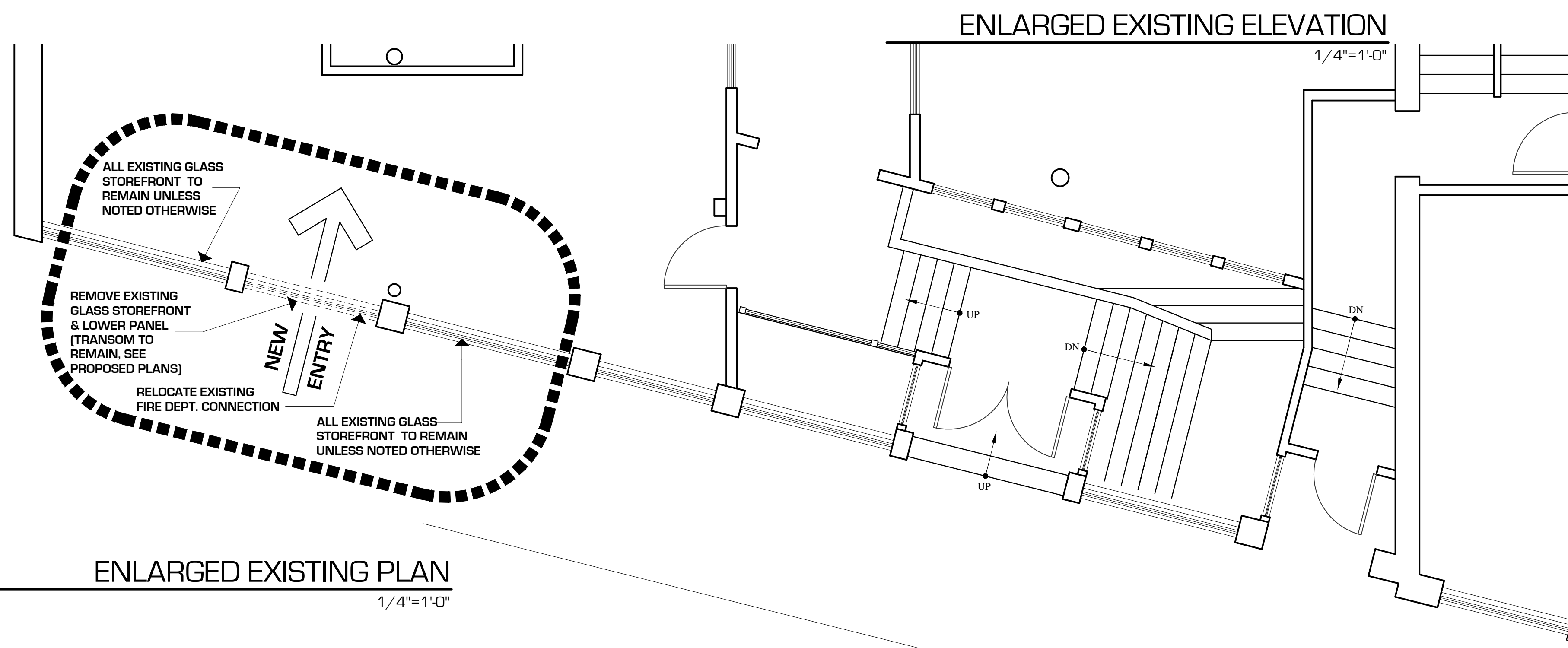
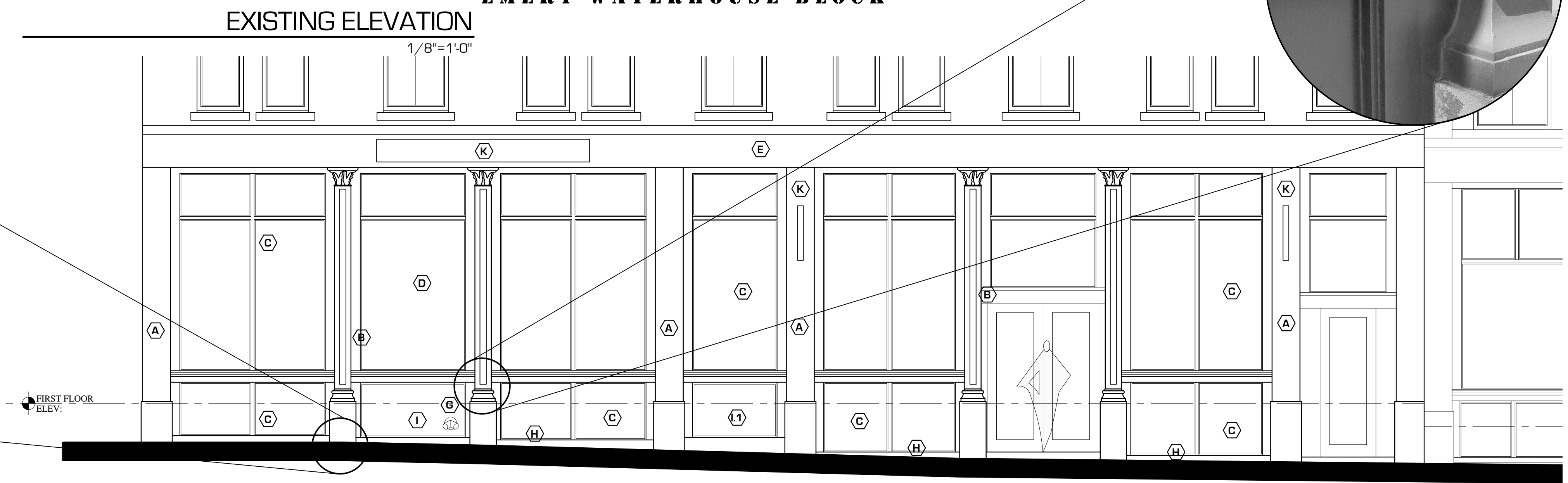
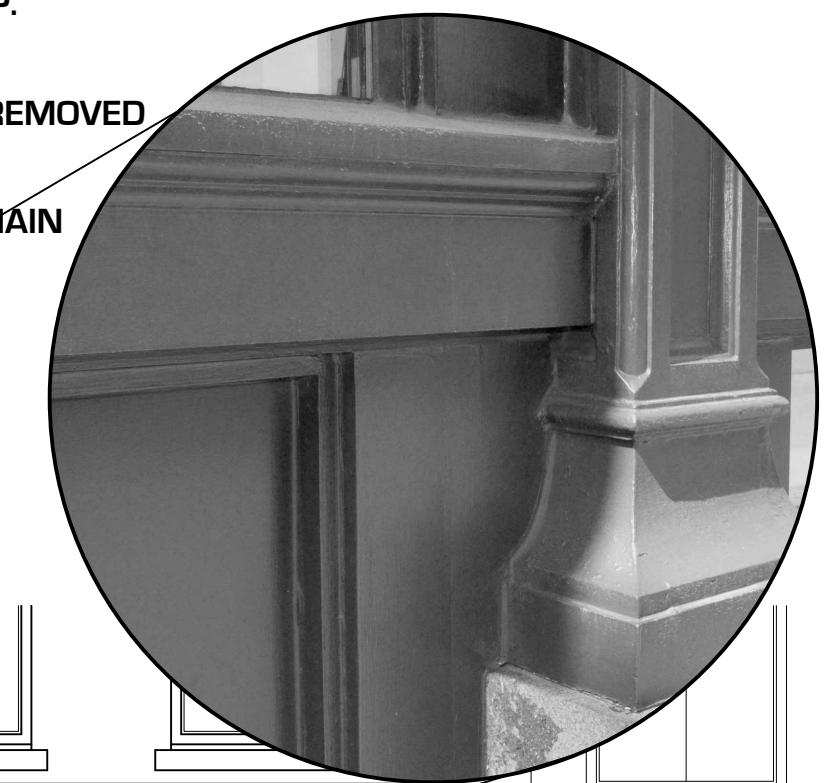
HP - 0

NOVEMBER 30, 2016



- FACADE RENOVATION NOTES:**
- (A) GRANITE PIERS TO REMAIN
 - (B) METAL DECORATIVE COLUMNS WITH GRANITE BASES TO REMAIN
 - (C) GLASS STOREFRONT TO REMAIN, TYP.
 - (D) GLASS STOREFRONT TO BE REMOVED
 - (E) GRANITE FREEZE TO REMAIN
 - (F) NO WORK AT BRICK FACADE
 - (G) RELOCATE EXISTING FIRE DEPARTMENT CONNECTION EQUIPMENT
 - (H) PRESERVE GRANITE BASES, TYP.
 - (I) EXISTING PANEL MOTIF TO BE REMOVED
 - (L) EXISTING PANEL MOTIF TO REMAIN

PEARL ST.



EXISTING WALL SECTION
3/4"=1'-0"

ENLARGED EXISTING PLAN
1/4"=1'-0"

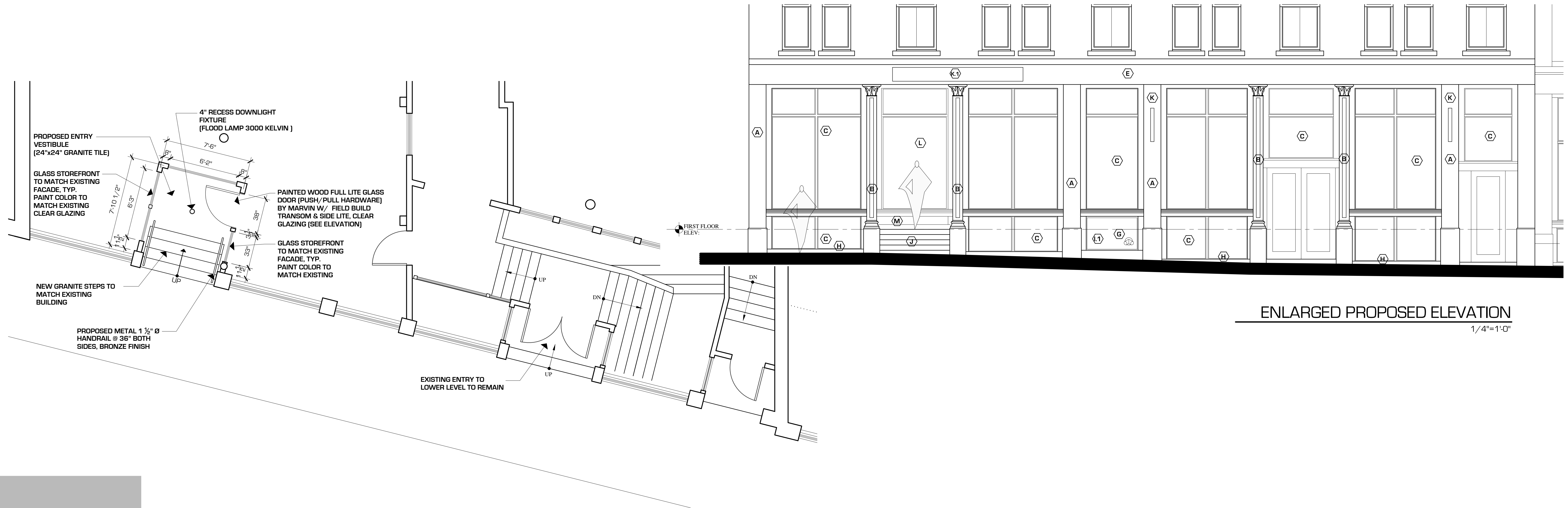


MARK
MUELLER
ARCHITECTS



FACADE RENOVATION NOTES:

- (A) GRANITE PIERS TO REMAIN
- (B) METAL DECORATIVE COLUMNS WITH GRANITE BASES TO REMAIN
- (C) GLASS STOREFRONT TO REMAIN, TYP.
- (D) GLASS STOREFRONT TO BE REMOVED
- (E) GRANITE FREEZE TO REMAIN
- (F) NO WORK AT BRICK FACADE
- (G) RELOCATE EXISTING FIRE DEPARTMENT CONNECTION EQUIPMENT
- (H) PRESERVE GRANITE BASES, TYP.
- (I) EXISTING PANEL MOTIF TO BE REMOVED
- (I.1) EXISTING PANEL MOTIF TO REMAIN
- (J) NEW GRANITE STEPS @ EXISTING LOCATION (STYLE & SHAPE TO MATCH EXISTING ENTRIES)
- (K) EXISTING SIGNAGE TO REMAIN
- (K.1) EXISTING SIGNAGE TO BE REMOVED (NEW FUTURE SIGNAGE BY TENANT)
- (L) PROPOSED GLASS STOREFRONT (CLEAR GLAZING) TO MATCH EXISTING FACADE, PAINT COLOR TO MATCH EXISTING
- (M) PROPOSED PANEL MOTIF TO MATCH EXISTING IN STYLE & COLOR

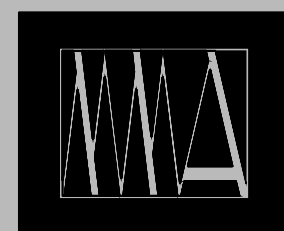


ENLARGED PROPOSED ELEVATION

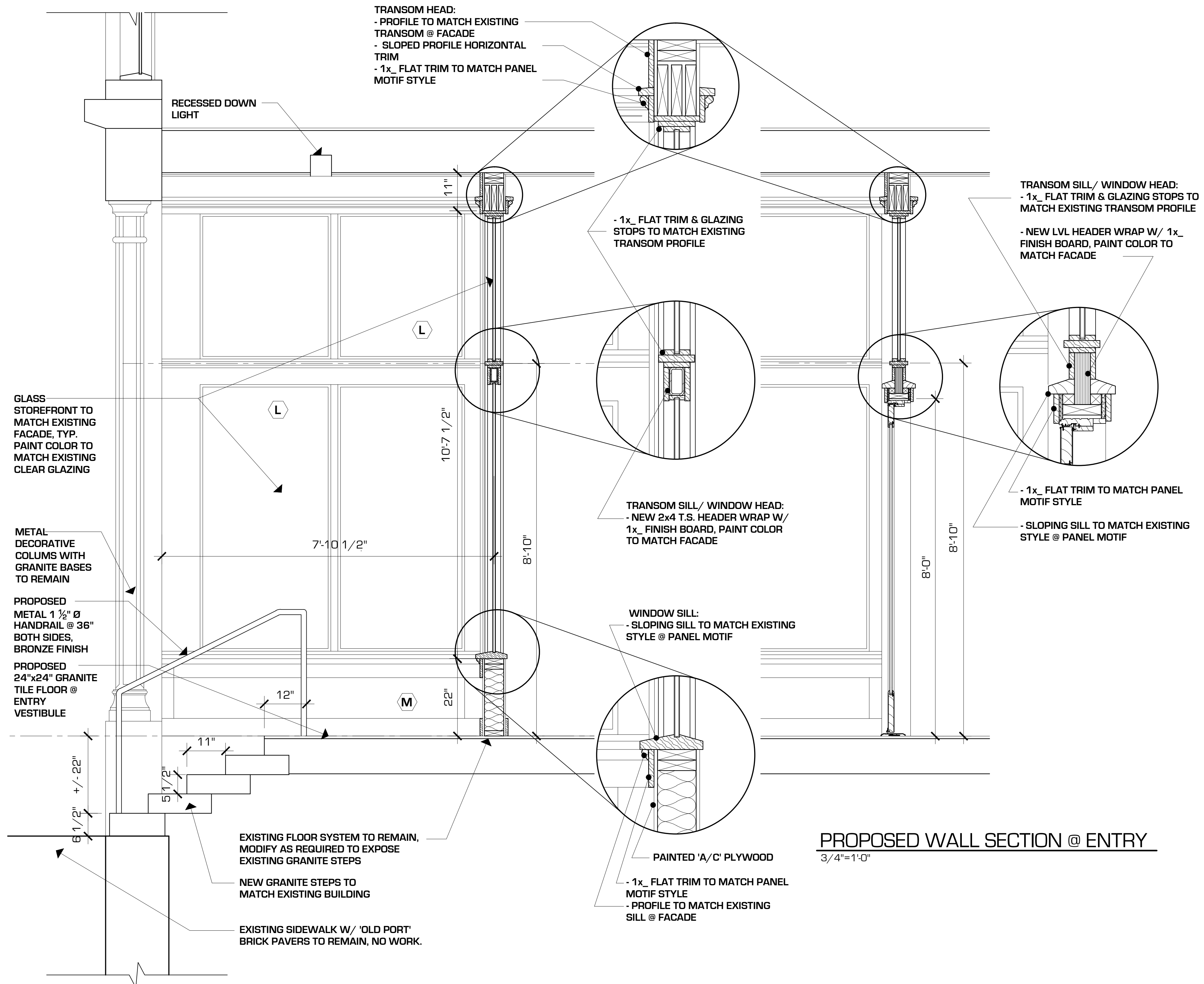
1/4"=1'-0"

ENLARGED PROPOSED PLAN

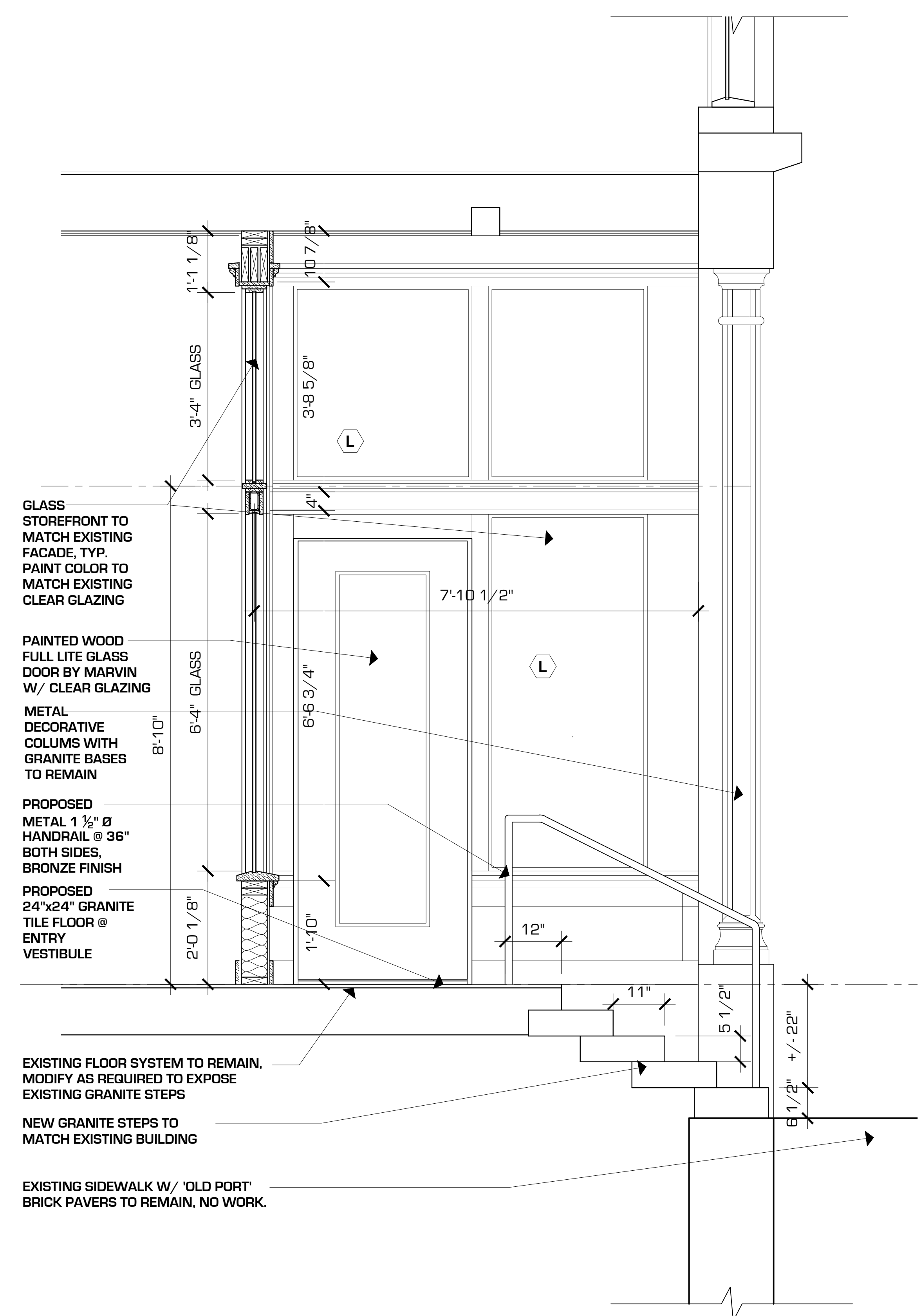
1/4"=1'-0"



MARK
MUELLER
ARCHITECTS

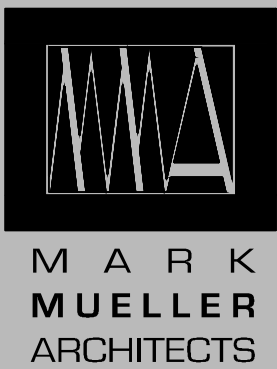


PROPOSED WALL SECTION
3/4"=1'-0"



PROPOSED WALL SECTION
3/4"=1'-0"

PROPOSED WALL SECTION @ ENTRY
3/4"=1'-0"



MARK
MUELLER
ARCHITECTS