

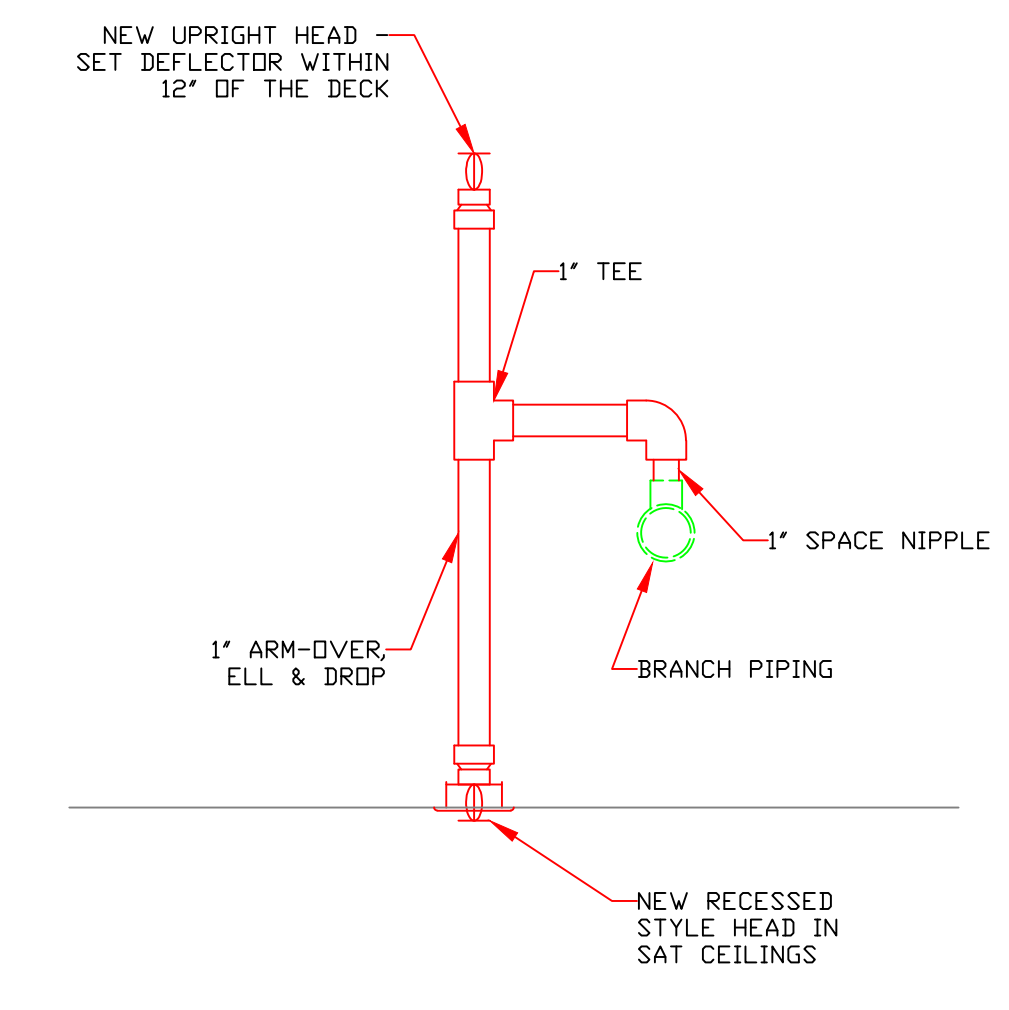
**BUILDING SECTION**  
SCALE: 1/8"=1'-0"

**LIGHT HAZARD SCHEDULE**

1"	2 spirs
1 1/4"	3 spirs
1 1/2"	5 spirs
2"	10 spirs
2 1/2"	30 spirs
3"	60 spirs
3 1/2"	100 spirs

**HEADS ABOVE AND BELOW**

1"	2 spirs
1 1/4"	4 spirs
1 1/2"	7 spirs
2"	15 spirs
2 1/2"	50 spirs

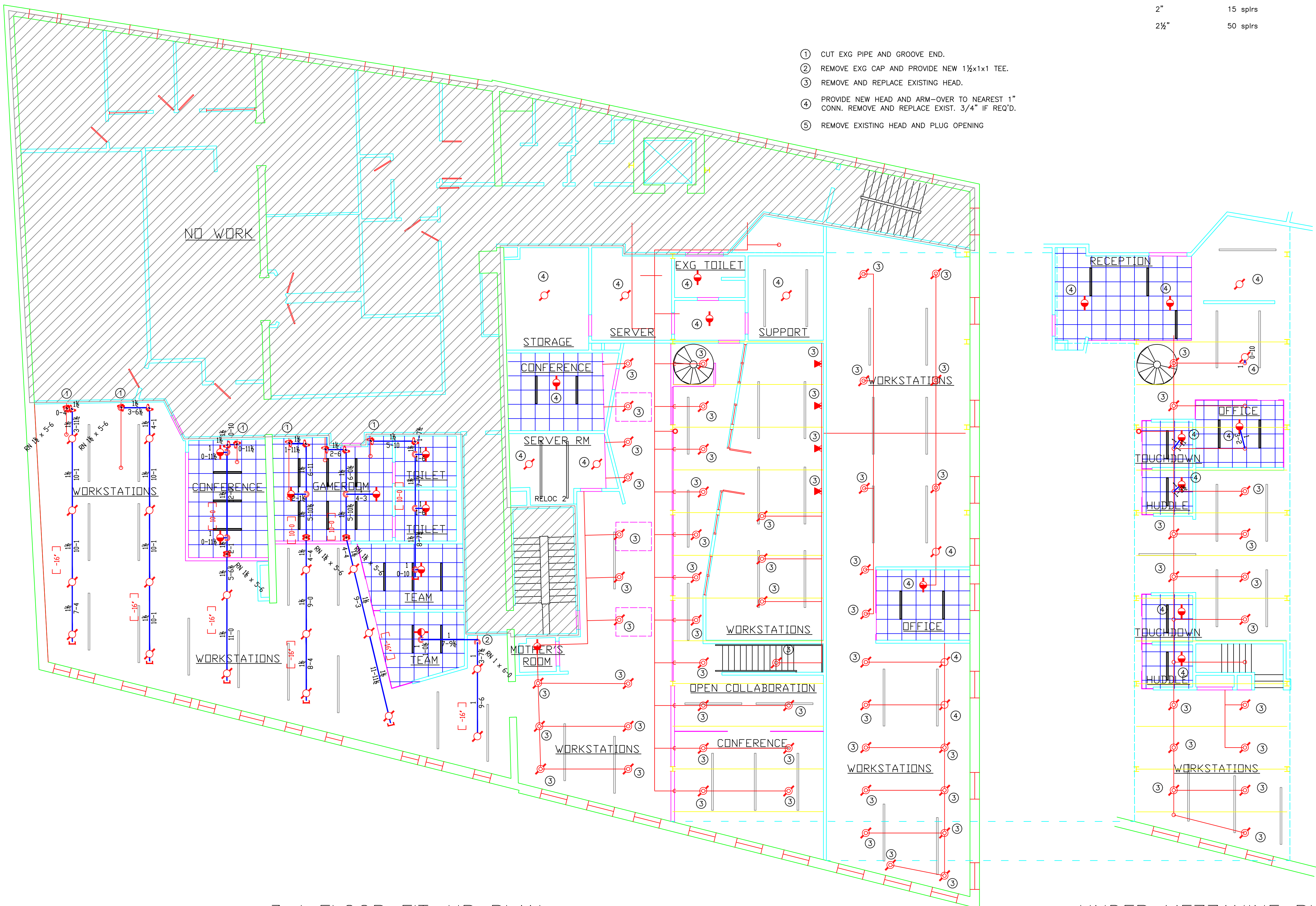


**HEAD PIPING DETAIL**  
SCALE: NONE

**GENERAL NOTES:**

- IT IS THE BUILDING OWNERS RESPONSIBILITY TO PROVIDE ADEQUATE HEAT FOR ALL AREAS IN THE BUILDING PROTECTED BY WET SPRINKLER SYSTEMS.
- ALL NEW PIPING IS TO BE HYDROSTATICALLY TESTED AT NOT LESS THAN 200 PSI FOR 2 HOURS, OR AT 50 PSI IN EXCESS OF THE MAXIMUM PRESSURE, WHEN THE MAXIMUM PRESSURE TO BE MAINTAINED IS IN EXCESS OF 150 PSI. (PER NFPA 13)
- WHETHER OR NOT INDICATED ON DRAWINGS, PROVISIONS FOR FLUSHING CONNECTIONS AND DRAINING OF ALL PIPE SHALL BE PROVIDED.
- ALL PIPING SHALL BE SCHEDULE 40 STEEL WITH MALLEABLE IRON FITTINGS.
- ALL PIPE 1 1/2" AND LARGER, MAY BE SCHEDULE 10 STEEL, WITH GROOVED COUPLINGS AND VICTAULIC MECHANICAL FITTINGS OR EQUIVALENT.
- ALL MECHANICAL TRADES ARE TO COORDINATE THEIR WORK WITH SPRINKLER WORK AS SHOWN ON THESE PLANS.
- ALL HANGERS AND LOCATIONS ARE TO BE IN ACCORDANCE WITH NFPA 13.
- ALL SPRINKLER HEADS IN SUSPENDED CEILING TILES ARE TO BE LOCATED IN AN AESTHETIC, SYMMETRICAL PATTERN WHENEVER POSSIBLE WITH THE HEADS CENTERED WITHIN THE TILE.
- ALL PIPING IS TO BE PITCHED IN ACCORDANCE WITH NFPA 13.
- CENTER LINE OF PIPE ABOVE FINISH FLOOR 12'-0" BELOW DECK 12'
- PROTECTIVE CAPS ARE TO REMAIN ON THE SPRINKLER HEADS UNTIL AFTER CEILINGS ARE INSTALLED.
- WHERE SURFACE MOUNTED OBSTRUCTIONS EXIST DEEP ESCUTCHEON SPRINKLER HEADS WILL BE INSTALLED.
- EXISTING UNDISTURBED, 3/4" LINES TO REMAIN, THIS SHALL INCLUDE LINES WHERE THE EXISTING HEAD IS BEING REPLACED BUT NOT MOVED. WHEREVER HEADS ARE RELOCATED ANY 3/4" ARM-OVER SHALL BE REPLACED WITH NEW 1" LINES.
- SCOPE OF WORK IS RENOVATE THE EXISTING PIPE SCHEDULE SYSTEM TO ACCOMMODATE THE NEW TENANT LAYOUT AND IS LIMITED TO THE WORK SHOWN IN THESE DOCUMENTS.

- CUT EXG PIPE AND GROOVE END.
- REMOVE EXG CAP AND PROVIDE NEW 1 1/2"x1 TEE.
- REMOVE AND REPLACE EXISTING HEAD.
- PROVIDE NEW HEAD AND ARM-OVER TO NEAREST 1" CONN. REMOVE AND REPLACE EXIST. 3/4" IF REQ'D.
- REMOVE EXISTING HEAD AND PLUG OPENING

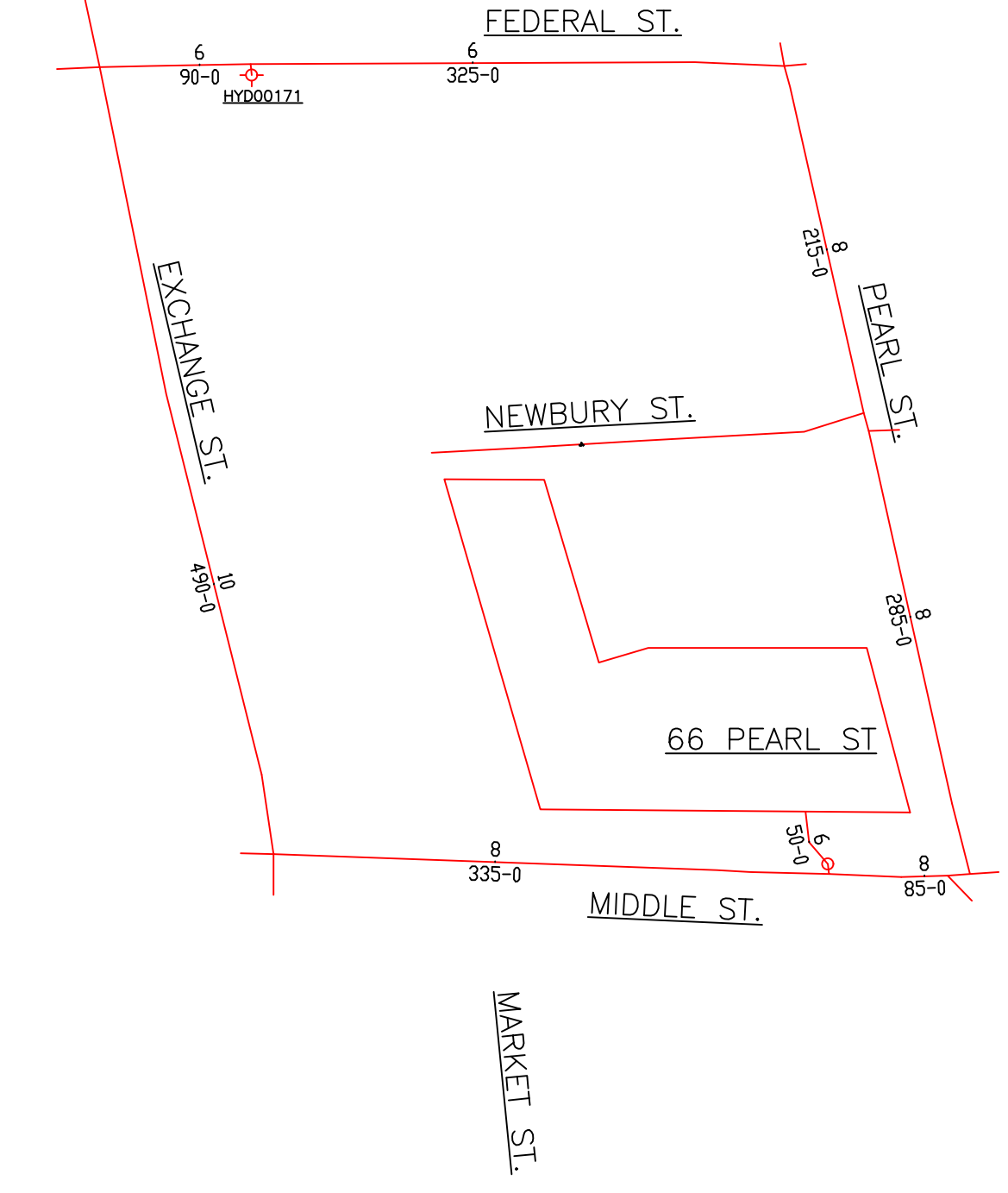


**3rd FLOOR FIT-UP PLAN**  
SCALE: 1/8"=1'-0"  
ELEV. = 77'-0"

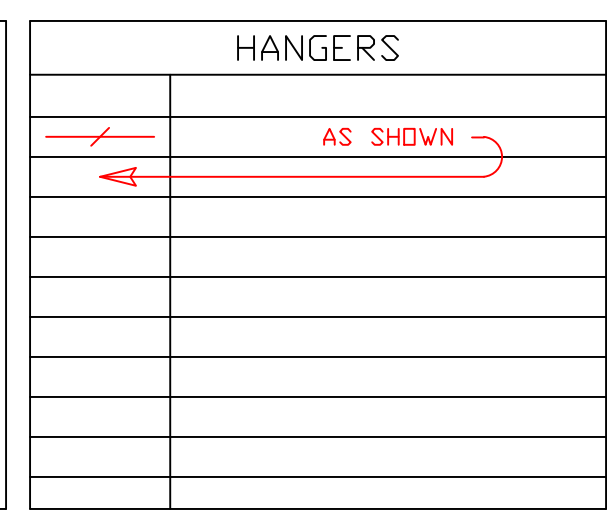
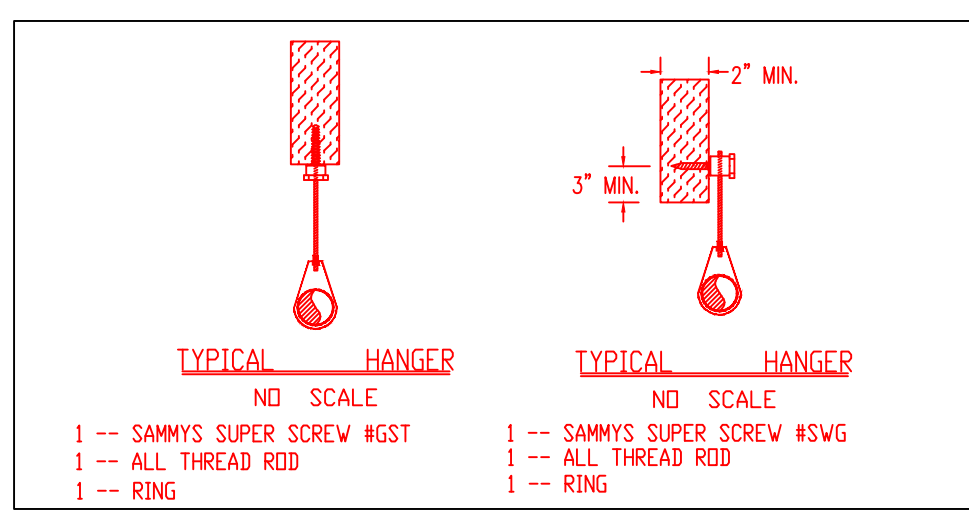
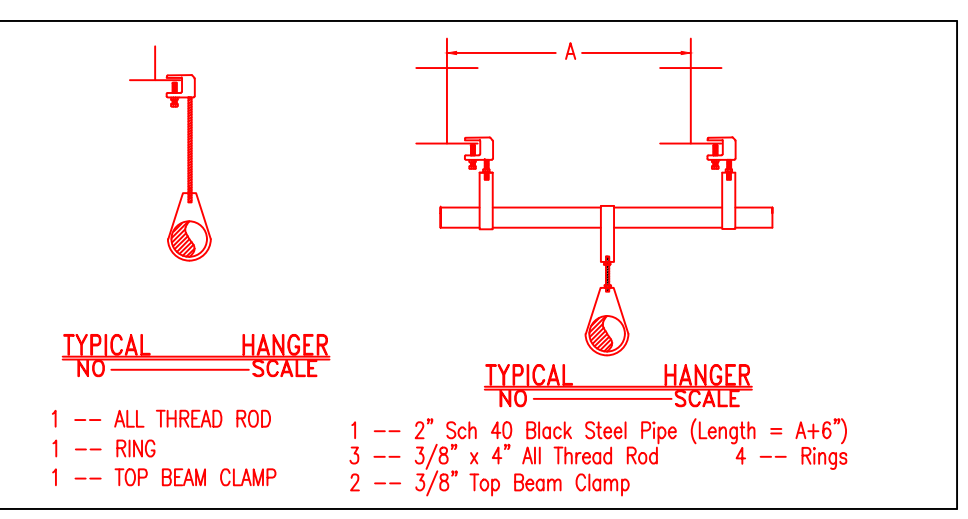
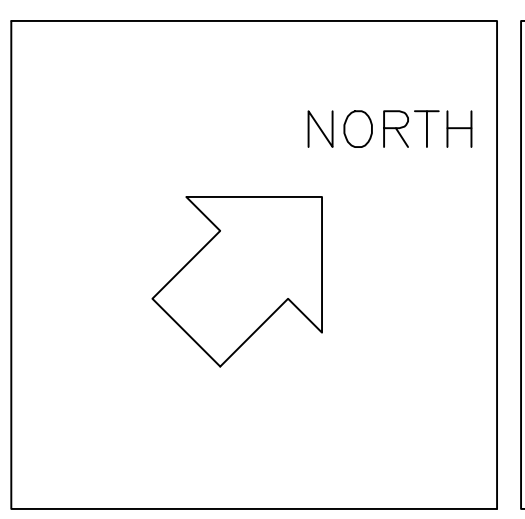
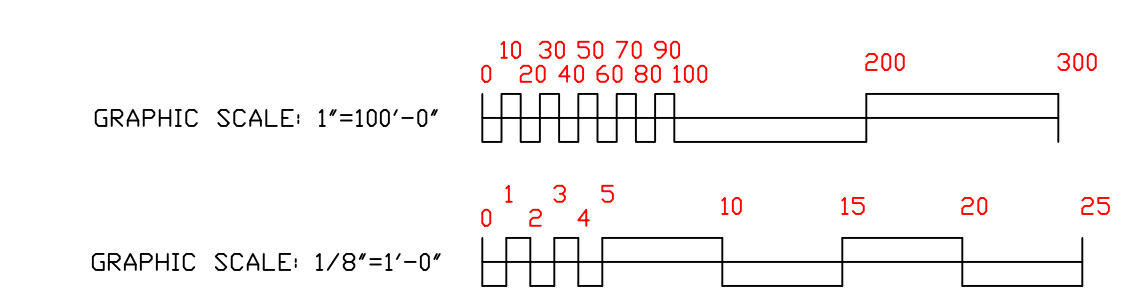
**UNDER MEZZANINE PLAN**  
SCALE: 1/8"=1'-0"  
ELEV. = 86'-5"

**PIPE SCHEDULE SYSTEM NOTES**

- SYSTEM DESIGNED PER PIPE SCHEDULE METHOD.
- END HEAD PRESSURE = 15 PSI
- PRESSURE LOSS FOR ELEVATION = 14.3 PSI
- (HIGHEST HEAD TO HYDRANT)
- PRESSURE LOSS FOR BACKFLOW @ 500 GPM = 5 PSI
- WATER SUPPLY MUST BE ABLE TO PROVIDE 35 PSI @ 500 GPM
- THE AVAILABLE WATER SUPPLY CAN PROVIDE 83 PSI @ 500 GPM
- WATER FLOW DATA FOR HYD00171
- STATIC.....84 PSI
- RESIDUAL.....80 PSI
- FLOW.....1209 GPM
- ELEV.....60-0 FEET
- BY.....PORTLAND WATER DIST
- DATE.....12 MAY 2014



**SITE PLAN**  
SCALE: 1"=100'-0"



**ABBREVIATIONS**

B	Bottom of Beam
D	Bottom of Deck
P	Bottom of Pipe
HV	House Valve
N.A.C	Not in Contract
NTS	Not to Scale
OS	Open Star Valve
PRV	Pressure Red Valve
RM	Roof Manifold
SP	Standpipe
TOB	Top of Beam
TOP	Top of Pipe
TOS	Top of Steel
UDN	Unless Otherwise Noted
CL	Centerline
NAS	No Automatic Sprinklers
OTA	Open to Above

**CONTRACT RESPONSIBILITIES**

ITEM	FFC	OTHERS
STREET CONN		●
EXCAVATION	●	
FLUSHING	●	
WIRING	●	
PAINTING	●	
TAMPER SYSTEMS	●	
FLOW SWITCHES	●	
STREET CONN	●	

**SPRINKLER HEAD LEGEND**

#	SYMBOL	MAKE	MODEL	SIN	FINISH	TYPE	TEMP	NPT	DRIFICE	K-FACTOR	TOTAL	
1	(Symbol)	RELIABLE	F1FR5G	RA1414	WHITE	RECESSED PLUNNET	155 F	1/2"	1/2"	5.6	29	
2	(Symbol)	RELIABLE	F1FR5G	RA1425	WHITE	UPRIGHT	200 F	1/2"	1/2"	5.6	112	
3	(Symbol)	RELIABLE	F1FR HSW	RA1435	WHITE	HORIZONTAL SIDEWALL	200 F	1/2"	1/2"	5.6	4	
4	(Symbol)	1 - TYPE #1 HEAD ON DROP & 1 - TYPE #2 HEAD ON SPRIG-UP - TOTALS ARE IN RESPECTIVE HEAD COLUMN										
											TOTAL	136

**SUBMITTALS**

SENT TO	DATE SENT MM/DD/YY	DATE RECEIVED
I S O		
F M		
L M		
I R I		
L A		
STATE FIRE		
LOCAL FIRE		
LOCAL WATER		
G. C.		

LICENSE # FSC93 442 PERMIT # FSPXXXX

R.M.S.# 442

P.O. BOX 1285  
LEWISTON, MAINE  
04243-1285

**LIQUID 3rd FLOOR FIT-UP**  
66 PEARL ST  
PORTLAND, MAINE  
**FLOOR PLAN AND NOTES**

CONTRACT WITH: MONAGHAN WOODWORKS

SYSTEM TYPE	NO.	DATE	DESCRIPTION
WET			
DRY			
DELUGE			
PREACTION			
ML LIFE			

SCALE: AS NOTED

DRAWN BY: ARS

CHECKED BY: CBS - NICET III #78833

DATE: MM/DD/YYYY

TOTAL SPRKS ON JOB: 136

SHEET #: FP-1

JOB #: 16-033