

FACADE RENOVATION NOTES:

- (A) GRANITE PIERS TO REMAIN
- (B) METAL DECORATIVE COLUMNS WITH GRANITE BASES TO REMAIN
- (C) GLASS STOREFRONT TO REMAIN, TYP.
- (D) GLASS STOREFRONT TO BE REMOVED
- (E) GRANITE FREEZE TO REMAIN
- (F) NO WORK AT BRICK FACADE
- (G) RELOCATE EXISTING FIRE DEPARTMENT CONNECTION EQUIPMENT
- (H) PRESERVE GRANITE BASES, TYP.
- (I) EXISTING PANEL MOTIF TO BE REMOVED



**MARK
MUELLER
ARCHITECTS**
A.I.A.
100 Commercial Street
Suite 205
Portland, Maine 04101
Phone/ Fax 207.774.9057
Email:
rfi@muellerarchitects.com

© COPYRIGHT 2018
MARK MUELLER ARCHITECTS

BERRY SHOE BLOCK
 66 PEARL STREET
 PORTLAND, MAINE

ENTRY DOOR VESTIBULE:

EXISTING CONDITIONS
 & DEMOLITION

REVISIONS
 DATE
 PROJECT
 66 PEARL ENTRY
 DRAWN BY
 MRP
 CHECK BY
 MAM

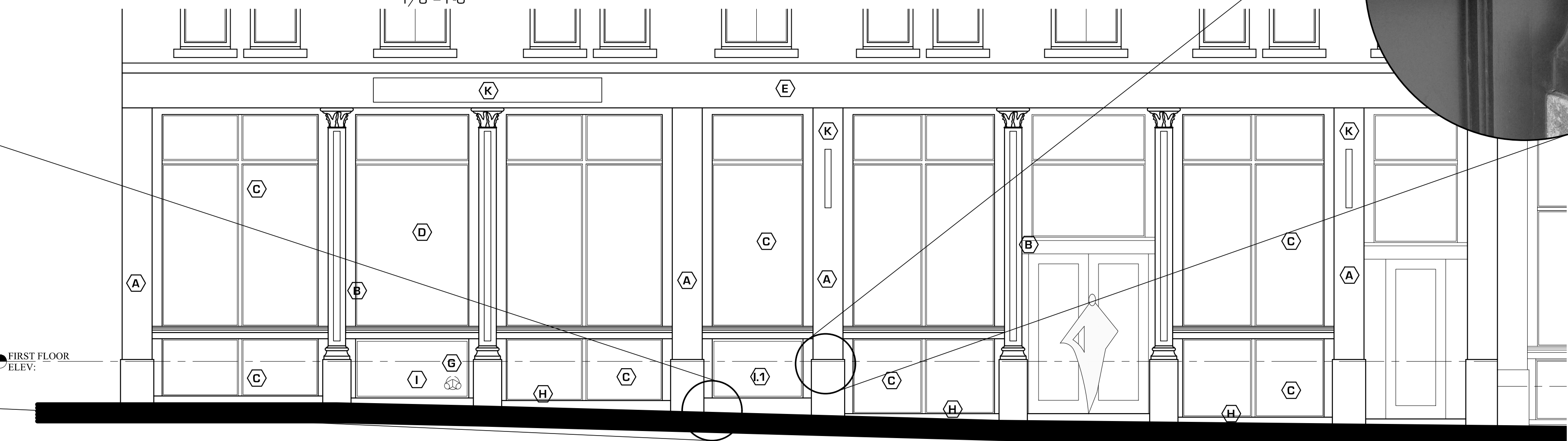
EC-1.2



BERRY SHOE BLOCK EMERY WATERHOUSE BLOCK

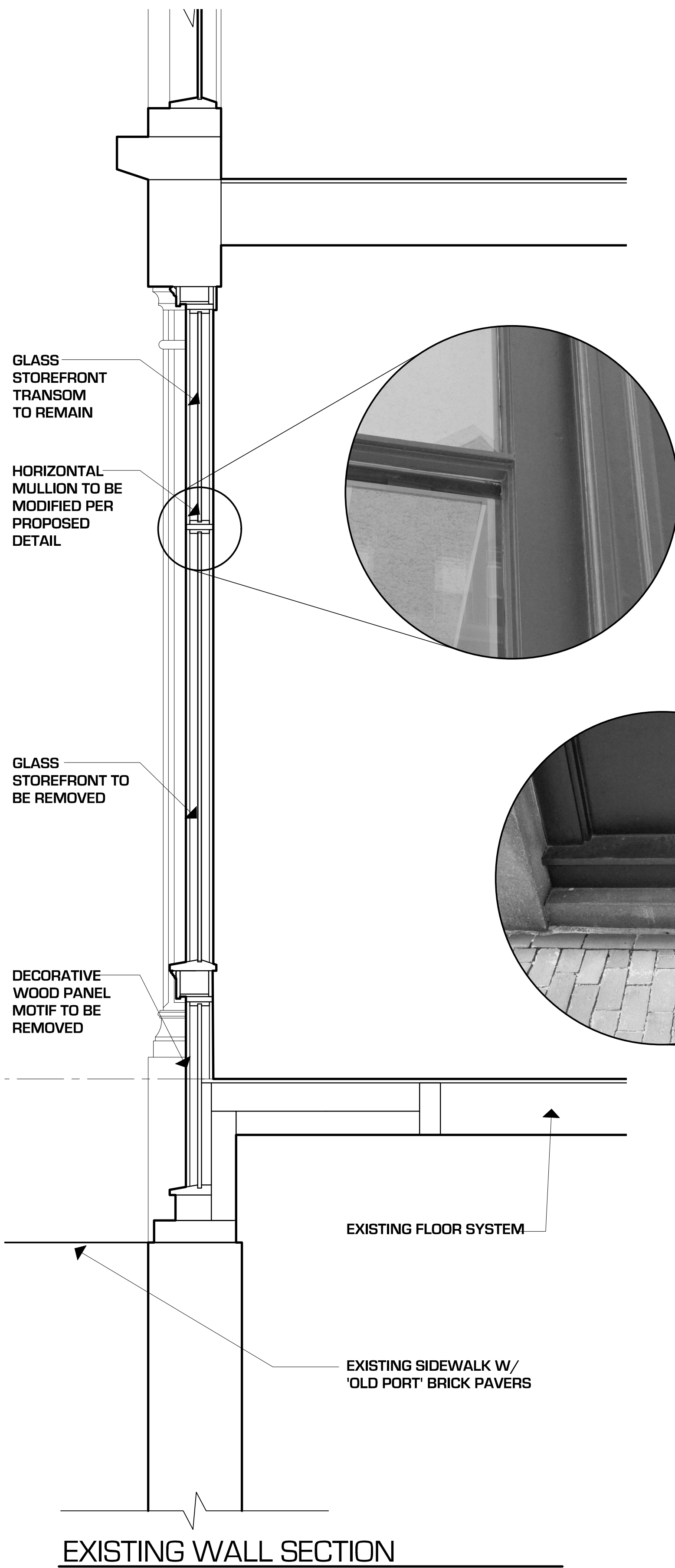
EXISTING ELEVATION

1/8"=1'-0"



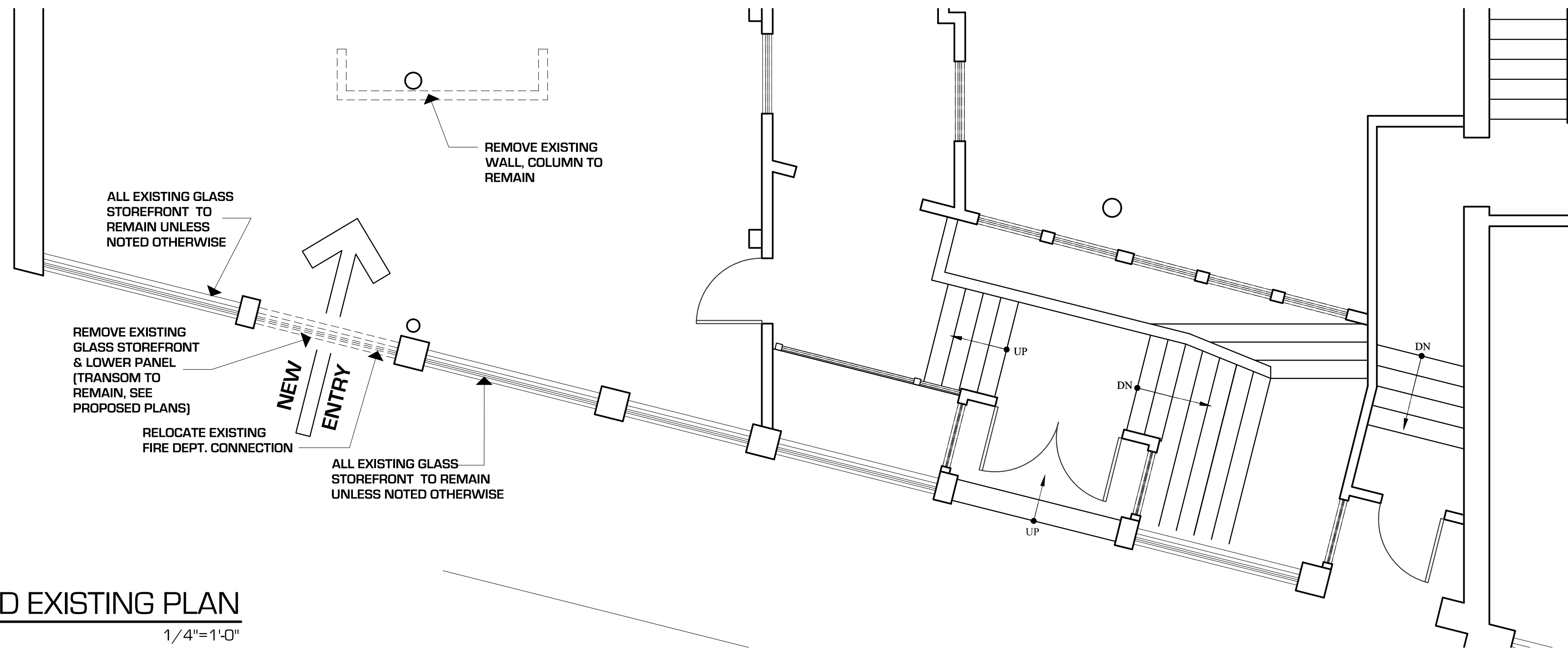
ENLARGED EXISTING ELEVATION

1/4"=1'-0"



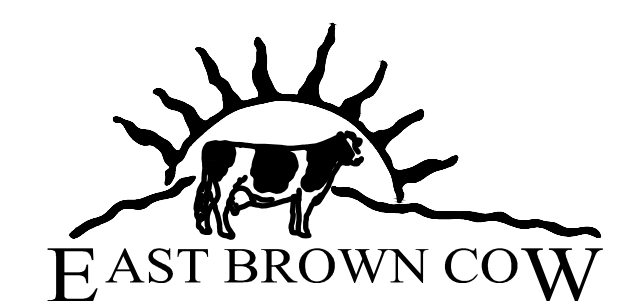
EXISTING WALL SECTION

3/4"=1'-0"



ENLARGED EXISTING PLAN

1/4"=1'-0"



EAST BROWN COW

BUILDING PERMIT SET: JANURAY 11, 2018