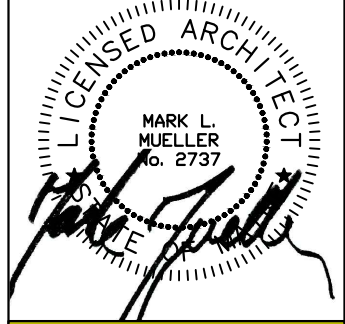
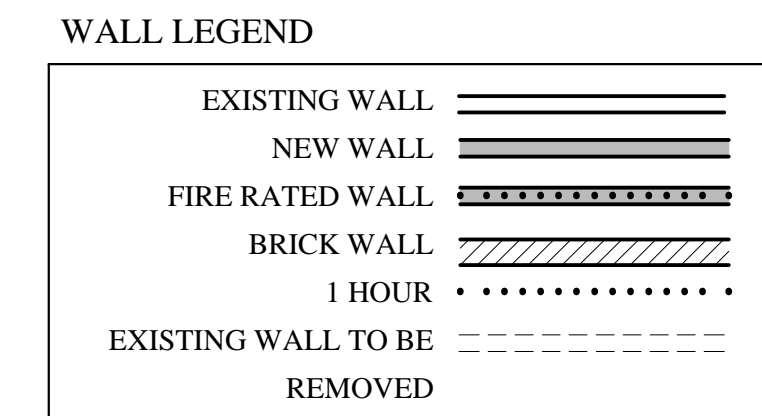


KEY PLAN
1/16"=1'-0"

AREA OF NEW
TENANT
SPACE WORK

AREA OF NEW
ENTRY VESTIBULE
@ FACADE



MARK MUELLER ARCHITECTS
A.I.A.
100 Commercial Street
Suite 205
Portland, Maine 04101
Phone: 207.774.9057
Email: rfm@muellerarchitects.com

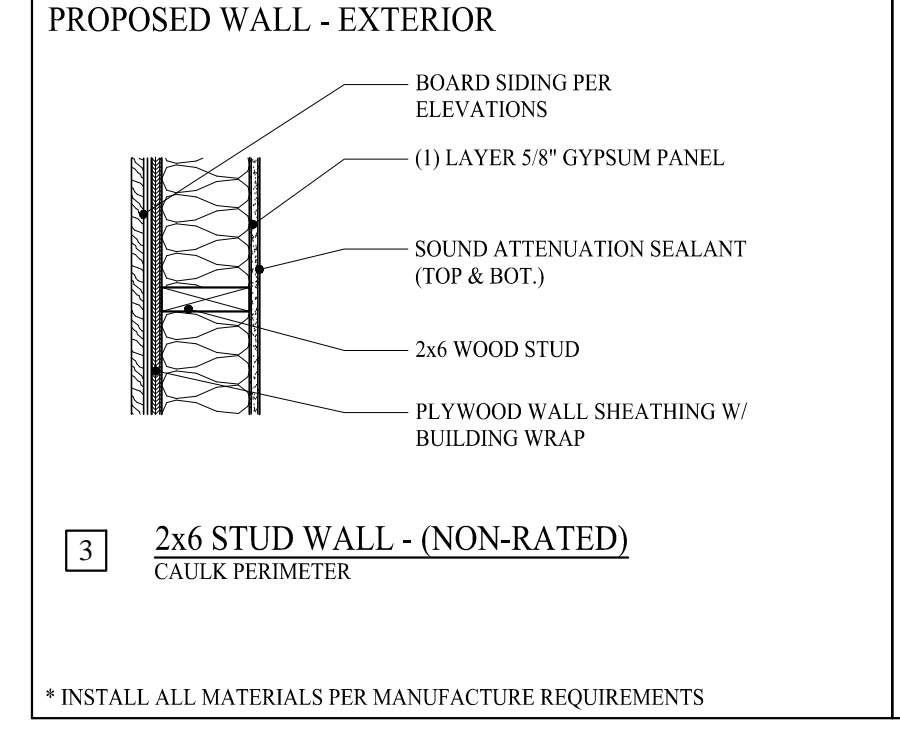
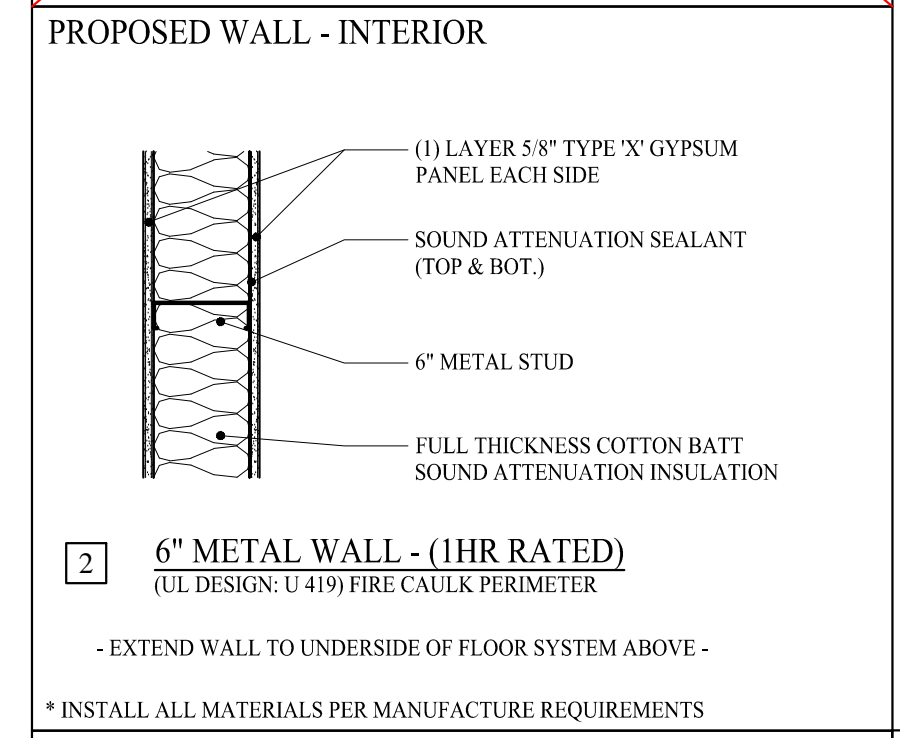
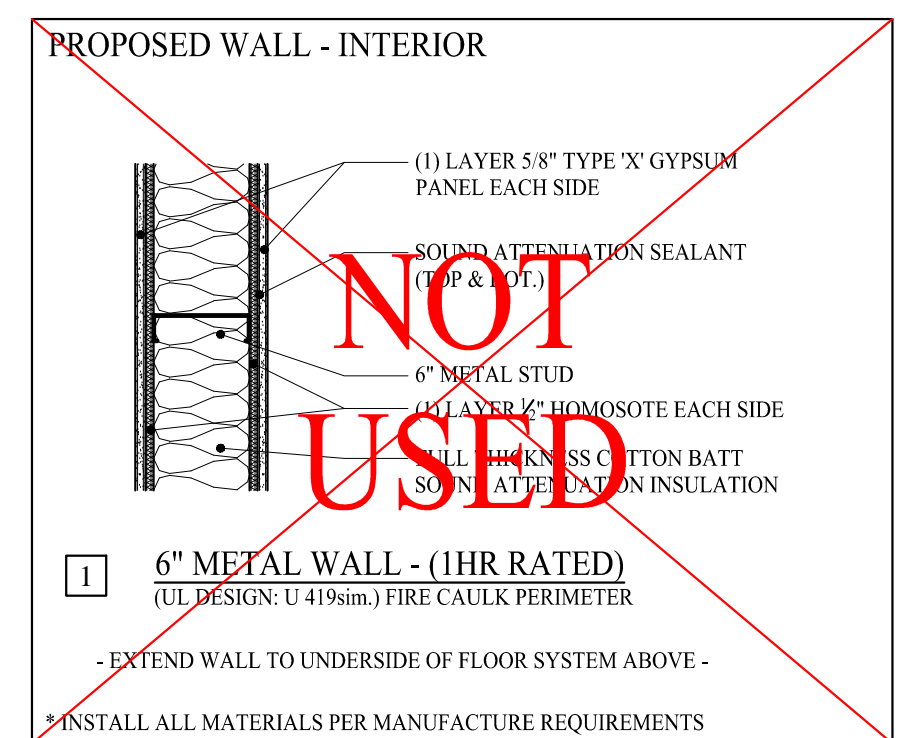
© COPYRIGHT 2014
MARK MUELLER ARCHITECTS

ANTHROPOLOGIE
66 PEARL STREET
PORTLAND, MAINE

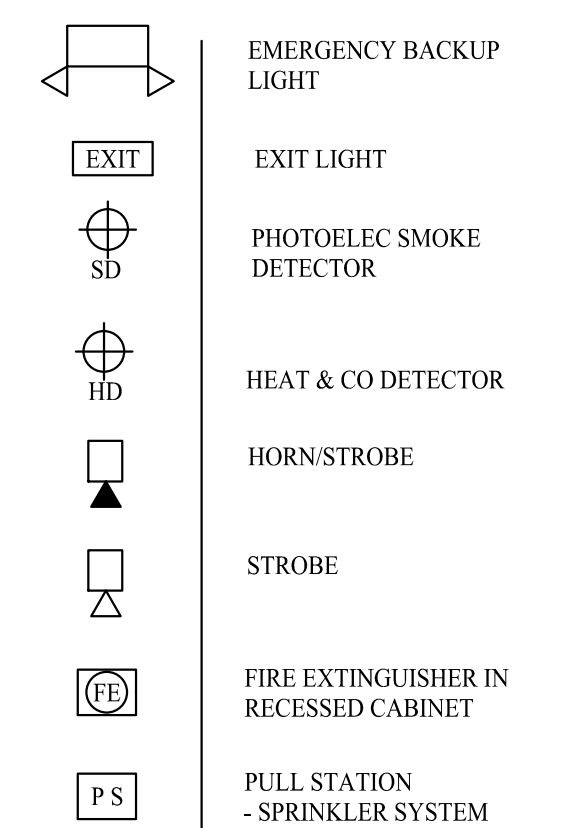
INTERIOR DEMOLITION

PROPOSED FLOOR PLAN

REVISIONS
DATE
PROJECT
ANTHROPOLOGIE
DRAWN BY
MRP
CHECK BY
MAM

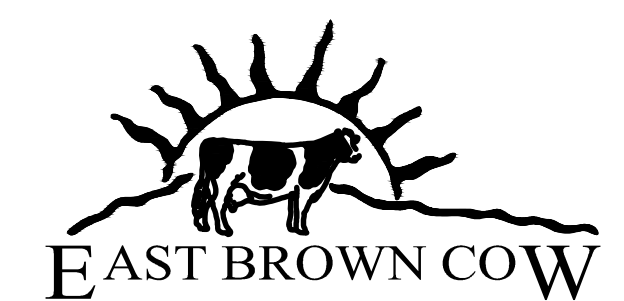
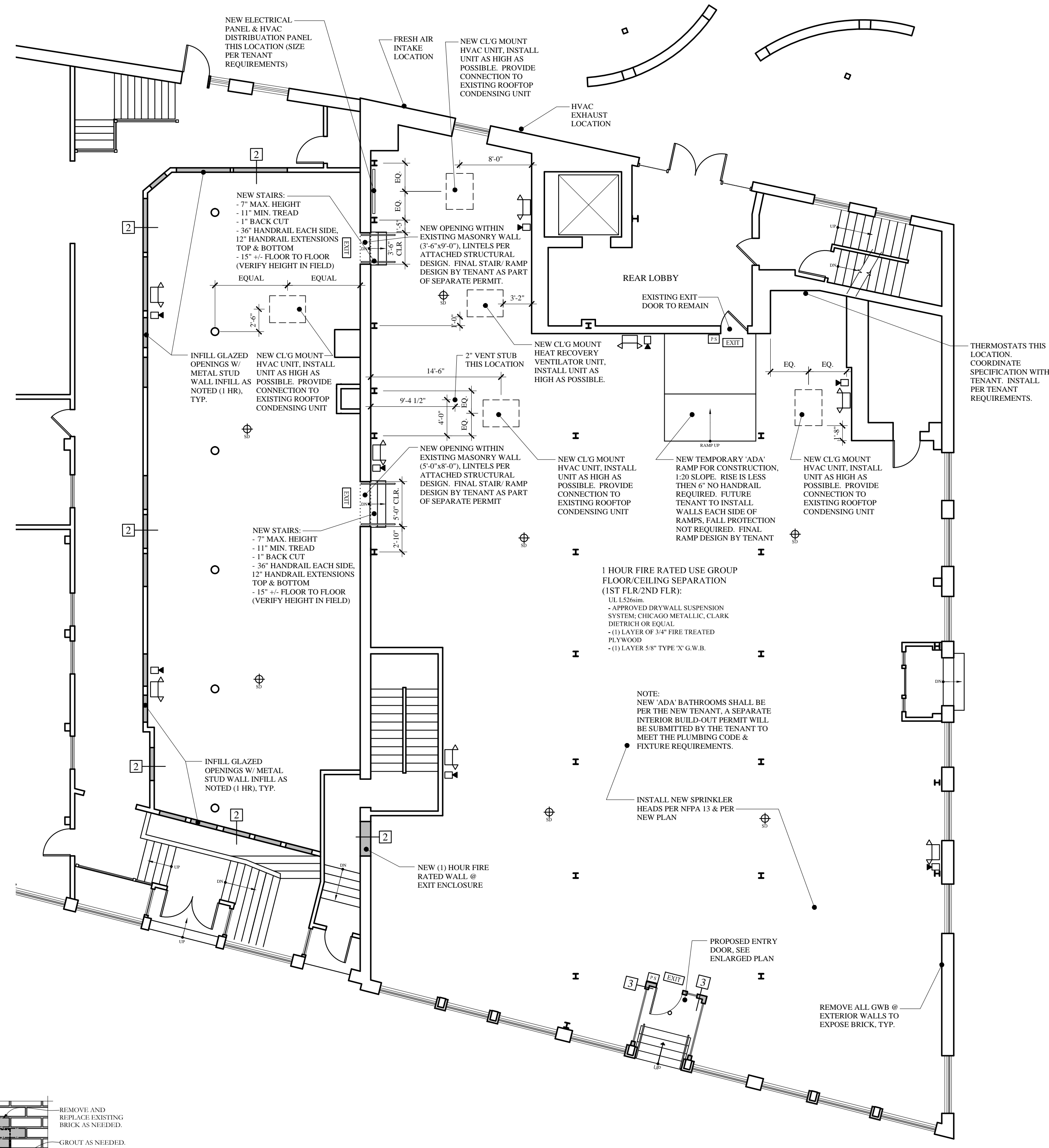
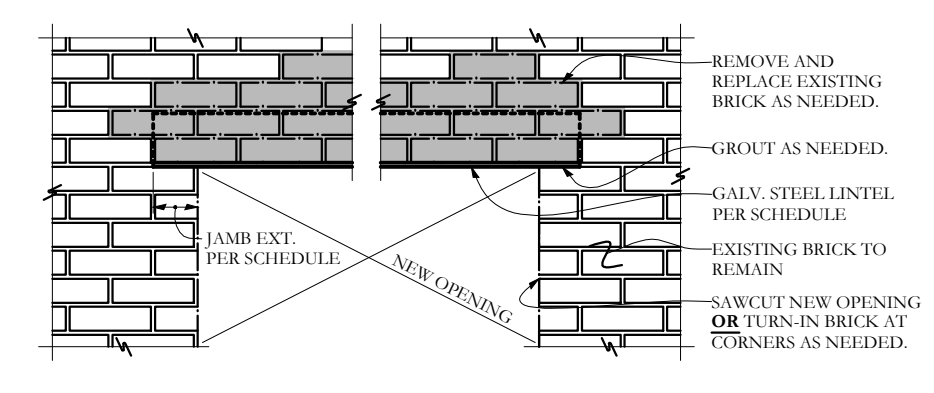
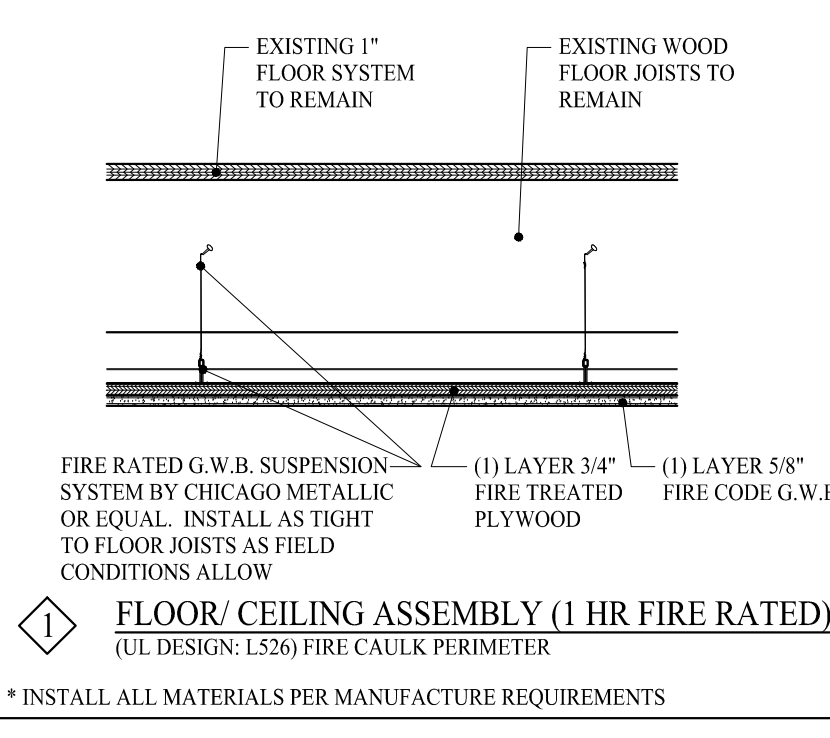


LIFE SAFETY LEGEND:



LIFE SAFETY NOTES:

- LIFE SAFETY AND FIRE ALARM SYSTEMS SHALL BE DESIGNED AND INSTALLED PER NFPA 72, BY A CITY/ STATE APPROVED CONTRACTOR WITH A SEPERATE PERMIT.
- ALL STROBES TO BE 30 CANDELA UNLESS OTHERWISE NOTED.
- SYSTEM SHALL BE SUPERVISED BY AN OFF-SITE CERTIFIED BY THE CITY OF PORTLAND THIRD PARTY
- EXISTING LIFE SAFETY SYSTEM SHALL REMAIN, TYP EACH SIDE



ADDENDA SET: AUGUST 04, 2014
BUILDING PERMIT SET: JULY 01, 2013

A-1.1