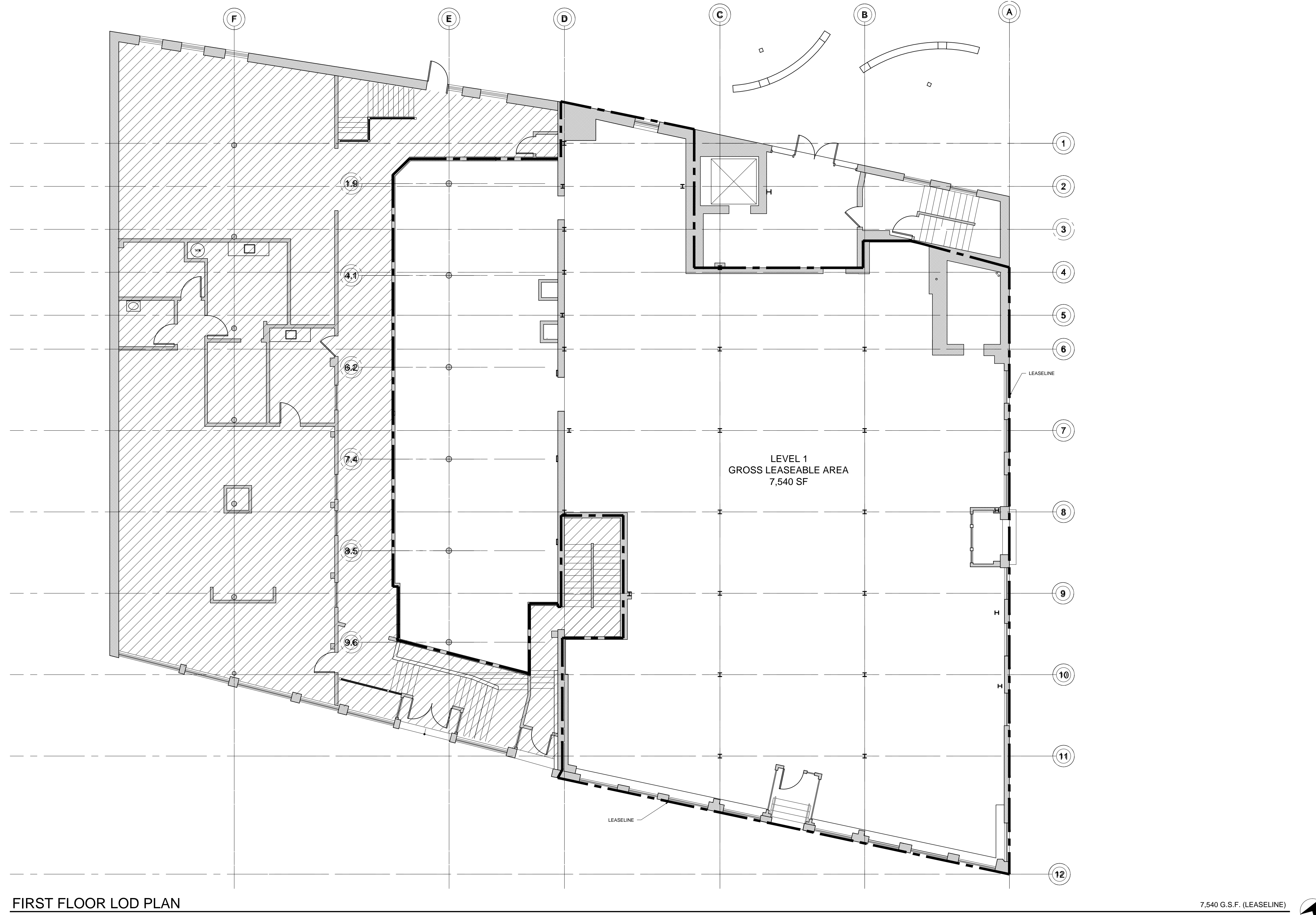


APPLCABLE CODES

THIS PROJECT IS A TENANT BUILD-OUT OF 7,540SF WITHIN AN EXISTING BUILDING.
 MAINE UNIFORM BUILDING AND ENERGY CODE (MUBEC) [JUNE 1, 2010]
 2009 BUILDING CODE: INTERNATIONAL BUILDING CODE, WITH MAINE AMENDMENTS
 2009 PLUMBING CODE: MAINE STATE PLUMBING CODE
 2009 MECHANICAL CODE: APPLICABLE MAINE CODES AND STATUES
 2009 FUEL GAS CODE: NFPA 54 NATIONAL FUEL GAS CODE
 2009 ENERGY CODE: INTERNATIONAL ENERGY CONSERVATION CODE, WITH MAINE AMENDMENTS
 2009 LIFE SAFETY CODE: NFPA #1, 101 LIFE SAFETY CODE
 2011 ELECTRICAL CODE: NATIONAL ELECTRICAL CODE
 2010 ACCESSIBILITY: ADA STANDARDS FOR ACCESSIBLE DESIGN
 SEE C105 FOR CODE REVIEW AND LIFE SAFETY PLAN

ANTHROPOLOGIE

60 PEARL STREET PORTLAND MAINE, 04101



FIRST FLOOR LOD PLAN
 SCALE: 1/8" = 1'-0"

7,540 G.S.F. (LEASELINE)

BUILDING DEPARTMENT

City of Portland Planning Division
 1385 Congress St.
 Portland, ME 04101
 PH: (207)874-8703
 Email: buildinginspections@portlandmaine.gov

ARCHITECT OF RECORD

NEWSTUDIO ARCHITECTURE, LLC
 Sean M Wagner, AIA
 4431 Lake Ave. S
 White Bear Lake, MN 55110
 PH: (651)207-5527 FX: (651)207-8247
 CONTACT: Marcy Conrad Nutt, AIA, Project Architect
 mconradnut@newstudioarchitecture.com

ENGINEERING CONSULTANTS

MECHANICAL
 HALLBERG ENGINEERING
 1750 Commerce Court
 White Bear Lake, MN 55110
 CONTACT: Michael Blesker, PE
 PH: (651) 748-9369 FX: (651) 748-9370
 MBlesker@hallbergengineering.com

ELECTRICAL
 HALLBERG ENGINEERING
 1750 Commerce Court
 White Bear Lake, MN 55110
 CONTACT: Dave Gaugley
 PH: (651) 748-1100 FX: (651) 748-9370
 dgaugley@hallbergengineering.com

STRUCTURAL
 ADVANCED STRUCTURAL TECHNOLOGIES, INC
 7212 Metro Blvd.
 Edina, MN 55439
 CONTACT: David C. Buchanan, P.E., S.E.
 PH: (952) 854-9302 FX: (952)854-9690
 dbuchanan@astmn.com

GENERAL CONTRACTOR

BLUE ROCK CONSTRUCTION, INC
 1275 Glenlivet Drive
 Suite 330
 Allentown, PA 18106
 CONTACT: PAUL NEHRBAS, PROJECT MANAGER
 P: (610)481-9119
 C: (215)285-3054
 F: (610)481-9133
 pnehbas@blcrk.com

DEVELOPER/LANDLORD

LEADER PROPERTIES, LLC
 5 Moulton Street, Suite 3
 Portland, ME 04101
 CONTACT: Todd Dominski, Tenant Coordinator
 East Brown Cow Management, Inc.
 PH:(207) 8775-2252 C: (207)650-0606
 tdominski@eastbrowncow.com

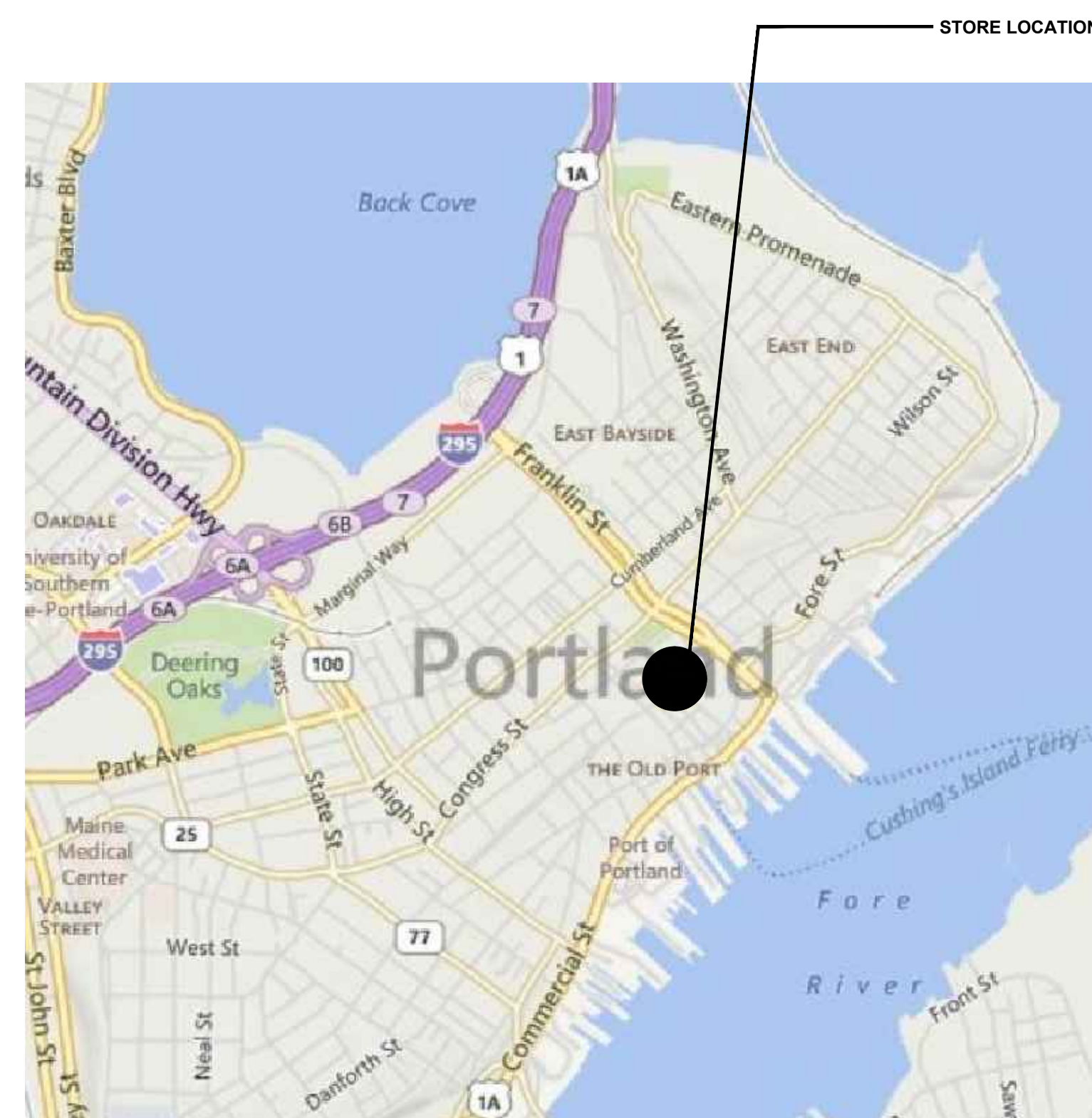
TENANT

URBAN OUTFITTERS, INC.
 5000 S. Broad Street
 Philadelphia, PA 19112-1495
 FAX: (215) 454-5170
 OWNER CONTACT:
 Jennifer Calligas - Senior Development Mgr. (215) 454-4285
 Liam Sullivan - Construction Manager (215) 454-4818

MERCHANDISING SQ. FT.

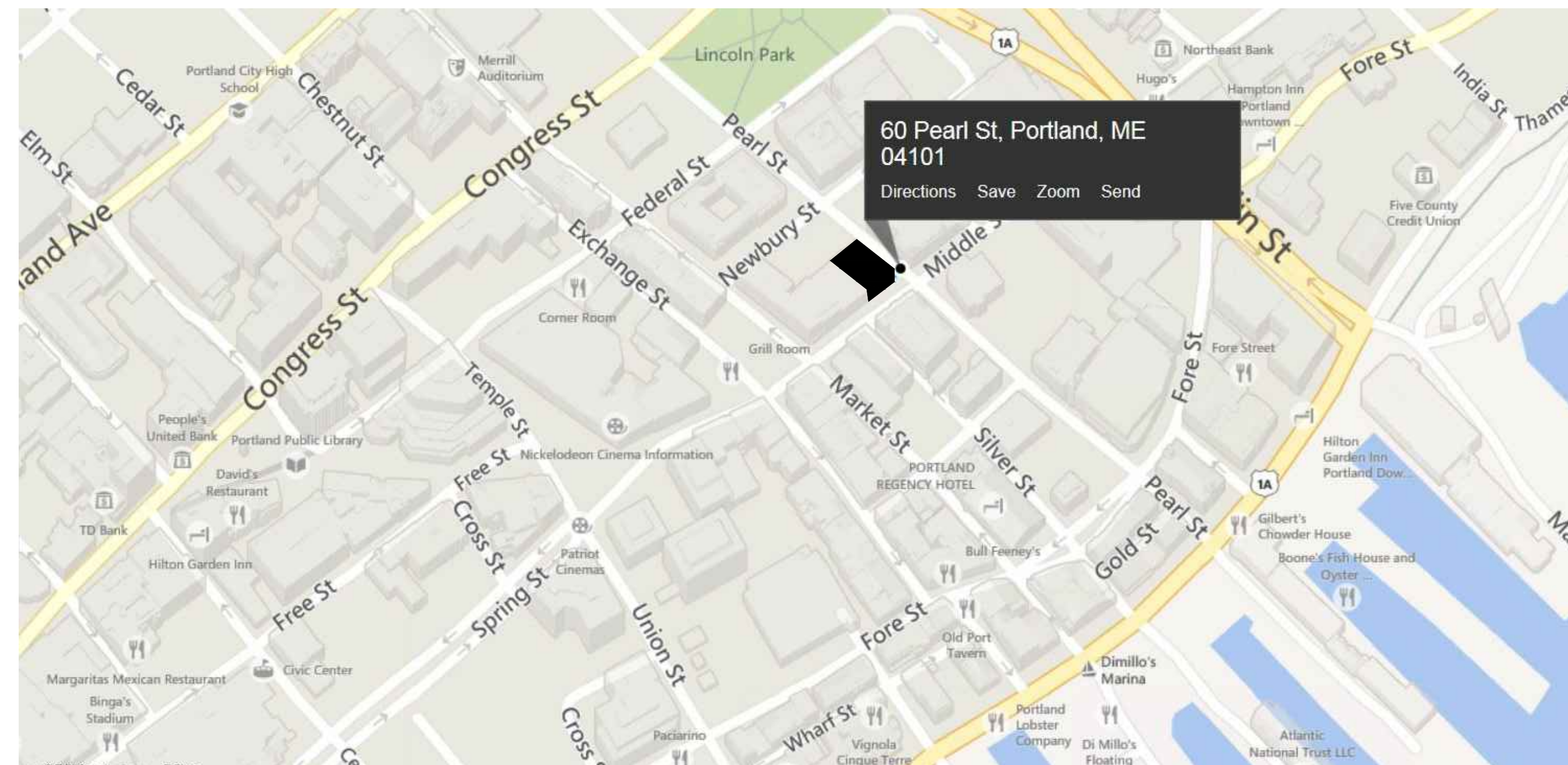
SELLING SQ. FT. = 4,215 SQ. FT.
 TOTAL NET SQ. FT. = 6,250 SQ. FT.

SELLING SQ. FT. INCLUDES ALL USABLE OPEN FLOOR AREA USED FOR DISPLAY, MERCHANDISING & SALES. THIS CALCULATION INCLUDES FITTING ROOMS, OFFICE AND ALL B.O.H. AREAS AND ALL AREAS COVERED BY WALLS & COLUMNS.
 TOTAL NET SQ. FT. INCLUDES ALL USABLE OPEN FLOOR AREA WITHIN THE LEASED SPACE. THIS CALCULATION EXCLUDES ALL AREAS COVERED BY WALLS & COLUMNS.



VICINITY MAP

SCALE: NTS



STREET LEVEL MAP

SCALE: NTS

ARCHITECTURAL

Sheet Number	Sheet Title
A100	COVER SHEET, INDEX, CODE INFO
C101	GENERAL NOTES
C102	FINISH SCHEDULE
C103	TENANT SUPPLIED ITEMS
C104	RESPONSIBILITY SCHEDULE
C105	CODE REVIEW & LIFE SAFETY PLAN
D300	DEMOLITION ELEVATIONS
FV100	FIELD VERIFICATION PLAN
A101	FIRST FLOOR PLAN
A107	FIRST FLOOR FRAMING PLAN
A110	ENLARGED PLAN - FITTING ROOMS
A111	ENLARGED PLAN - BOH
A130	FIXTURE PLAN
A200	REFLECTED CEILING PLAN
A210	DIMENSIONED CEILING PLAN
A211	ENLARGED FITTING ROOM REFLECTED CEILING PLAN
A220	LIGHT FIXTURE, CEILING ELEMENT DETAILS
A300	EXTERIOR PLANS & ELEVATIONS
A301	LOBBY STOREFRONT PLAN, ELEVATION & DETAILS
A310	EXTERIOR STOREFRONT SIGNAGE
A311	INTERIOR STOREFRONT SIGNAGE
A400	INTERIOR ELEVATIONS
A401	INTERIOR ELEVATIONS - FITTING ROOMS
A410	INTERIOR ELEVATIONS - BACK OF HOUSE
A420	INTERIOR ELEVATIONS - RESTROOMS
A421	INTERIOR DETAILS - SALES AREA KITCHEN
A430	PANTRY
A431	INTERIOR DETAILS - SALES AREA LINEN CLOSET
A432	INTERIOR DETAILS - SALES AREA PARTITIONS
A433	INTERIOR DETAILS
A440	INTERIOR DETAILS - FITTING ROOM ASSEMBLIES
A450	FIXTURE DETAILS - CASHWRAP, BACKWRAP, & MPOS
A451	FIXTURE DETAILS
A500	FEATURE RAMP
A501	HANDRAILS AND GUARDRAILS
A600	DOOR SCHEDULE, DETAILS, & NOTES
A610	DOOR, THRESHOLD, & FLOOR TRANSITION DETAILS
A800	ARCHITECTURAL SPECIFICATIONS
A801	ARCHITECTURAL SPECIFICATIONS

STRUCTURAL

Sheet Number	Sheet Title
S001	TITLE SHEET & STRUCTURAL NOTES
S002	SPECIAL INSPECTIONS TESTING REQUIRED SUBMITTALS
S100	FLOOR PLAN
S110	PARTIAL FRAMING PLANS
S300	SECTIONS AND DETAILS

MECHANICAL

Sheet Number	Sheet Title
M100	MECHANICAL PLAN
M200	MECH. DETAILS, SYMBOLS, & SCHEDULES
M300	MECHANICAL SPECIFICATIONS

PLUMBING

Sheet Number	Sheet Title
P100	ENLARGED PLUMBING PLAN
P200	PLUMB. DETAILS, SCHEDULES, & SPECIFICATIONS

ELECTRICAL

Sheet Number	Sheet Title
E100	LIGHTING PLAN
E200	POWER PLAN
E300	LOW VOLTAGE PLAN
E400	ELECTRICAL SYMBOL LEGEND AND SPECIAL NOTES
E401	ELECTRICAL DETAILS
E402	ELECTRICAL DETAILS
E403	ELECTRICAL DETAILS
E404	ELECTRICAL DETAILS
E500	LIGHTING CONTROL DIAGRAM
E501	POWER RISER AND PANEL SCHEDULES
E600	ELECTRICAL SPECIFICATIONS
E601	ELECTRICAL SPECIFICATIONS

FIRE PROTECTION

Sheet Number	Sheet Title
FP100	SPRINKLER LAYOUT PLAN

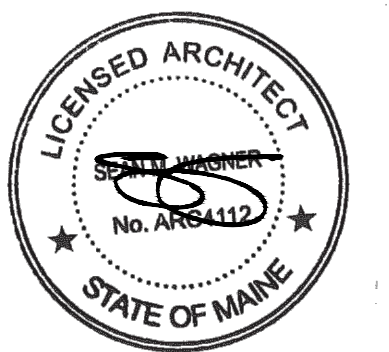
VENDORS

Sheet Number	Sheet Title
V100	CHECKPOINT
V101	CHECKPOINT
V200	PLAYNETWORK
V201	PLAYNETWORK
V202	PLAY NETWORK
V300	VECTOR SECURITY

ISSUE / DATE:

100% CHECK SET	07-11-2014
BID/PERMIT	08-01-2014

ARCHITECT/SEAL:



REVISION:

REVISION 1 - CITY COMMENTS	09-19-2014
----------------------------	------------

NewStudioArchitecture

4431 Lake Avenue South
 White Bear Lake, MN 55110
 p: 651.207.5527
 f: 651.207.8247

ANTHROPOLOGIE - 60 PEARL STREET - PORTLAND MAINE - 04101