

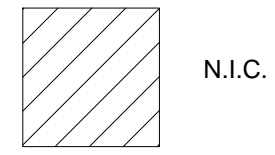


FIXTURE LEGEND

	FIXTURE DESCRIPTION	PLAN DETAIL	ELEVATION	SIZE
	FLOATING WALL #1	9/A451	3/A451	10'-7 1/2" W. X 10'-2" H.
	FLOATING WALL #2	9/A451	4/A451	10'-7 1/2" W. X 8'-8" H.



N.I.C.

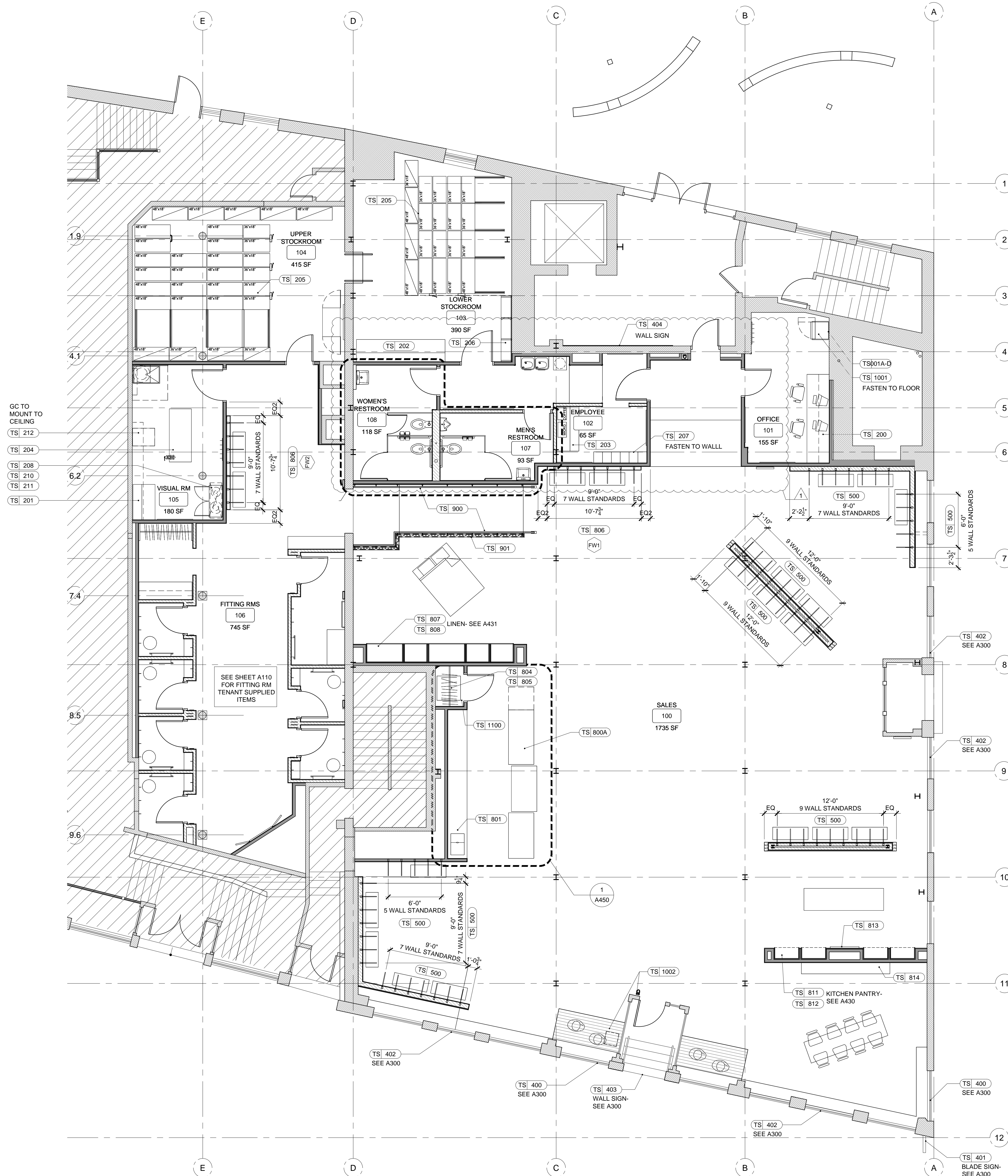
FIXTURE PLAN GENERAL NOTES

1. TENANT MUST HAVE AT LEAST ONE 44" MINIMUM WIDTH PATH OF EGRESS FROM STOREFRONT TO BACK CORRIDOR. ALL OTHER PATHWAYS MUST BE 36" WIDE (MINIMUM).

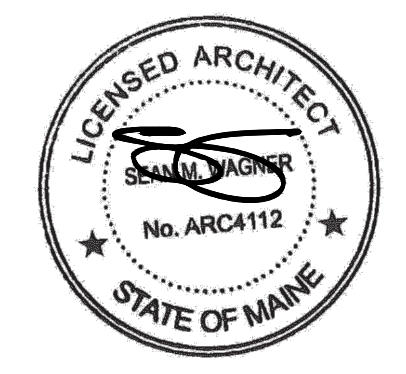
2. U.N.O. ALL STEEL FIXTURE STANDARDS (TUBE STEEL, ANGLES, PLATES, FASTENERS, ETC.) TO BE OF ASTM500 GRADE B HOT ROLLED STRUCTURAL STEEL AND FINISHED PER FINISH TAG M-15 ABOVE. SUBMIT SAMPLES TO UOI FOR REVIEW AND APPROVAL.

3. REFER TO FINISH SCHEDULE C102 FOR TSM NUMBERS FOR FLOOR, BASE, AND MISCELLANEOUS MATERIALS.

4. REFER TO C103 FOR TENANT SUPPLIED MATERIALS LIST



GC TO MOUNT TO CEILING
 TSI 212
 TSI 204
 TSI 208
 TSI 210
 TSI 211
 TSI 201



ARCHITECTS
 I hereby certify that this plan, specification, or report was prepared by me or under my direct supervision and that I am a duly Licensed Architect under the laws of the State of Maine.

Print Name: Sean M. Wagner, AIA

Date: 09-22-2014 License #: ARC4112

NewStudioArchitecture

4431 Lake Avenue South
 White Bear Lake, MN 55110
 p: 651.207.5527 f: 651.207.8247

ANTHROPOLOGIE

60 Pearl Street
 Portland, ME 04101

DRAWN BY: BH CHECKED BY: SMW
 NSA PROJECT NUMBER: 2013-99
 PROJECT PHASE: CD

ISSUE / DATE:
 100% CHECKSET 07-11-2014
 BID/PERMIT 08-01-2014

REVISION :
 1 REVISION 1 - CITY COMMENTS 09-19-2014

SHEET TITLE :
FIXTURE PLAN

SHEET NO :
A130