

NewStudio Architecture

4431 Lake Avenue South
White Bear Lake, MN 55110

P: 651.207.5527
F: 651.207.5247

NSA PROJECT NUMBER: 2013-99

ANTHROPOLOGIE

60 Pearl Street
Portland, ME 04101

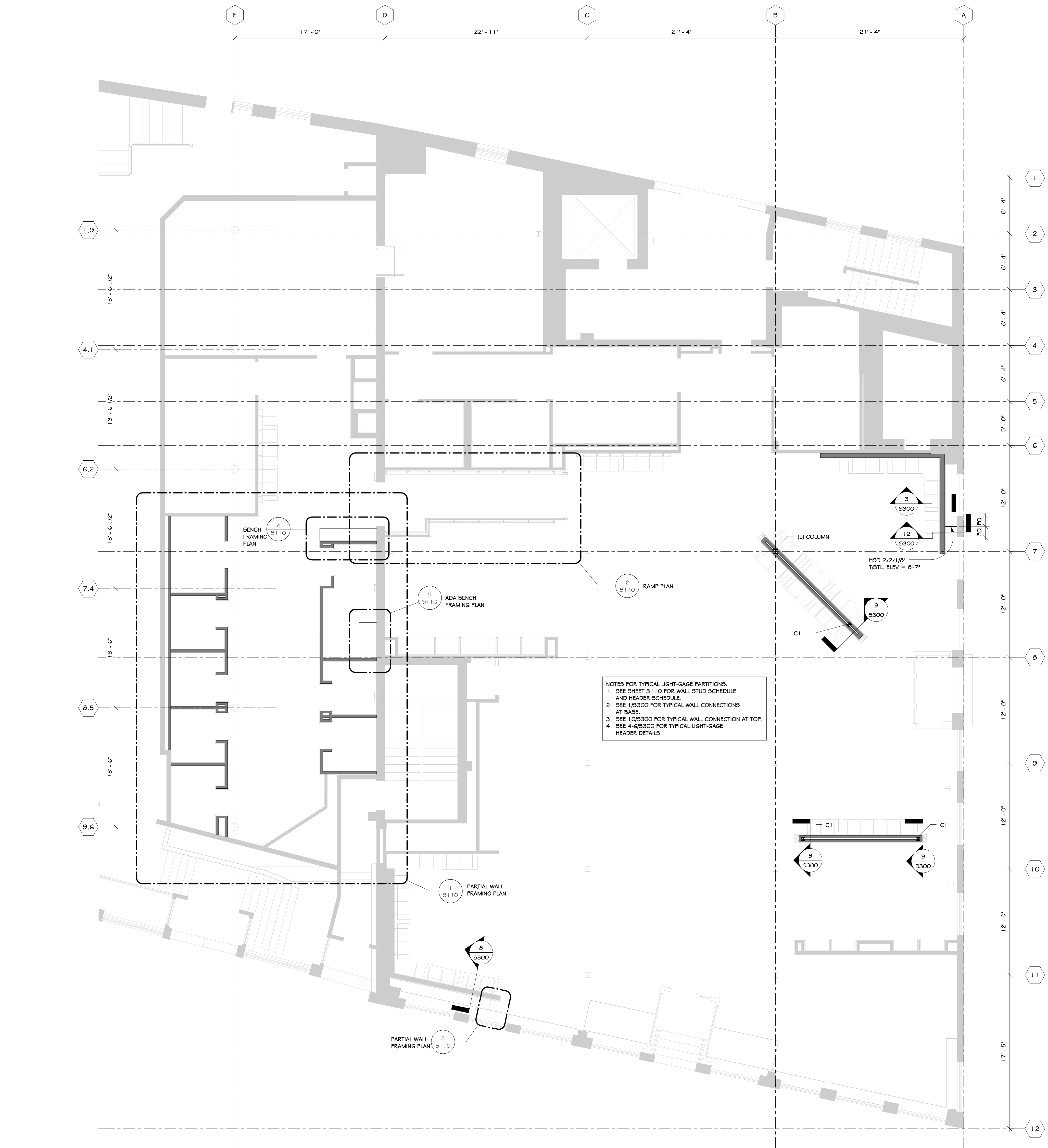
STRUCTURAL ENGINEER:



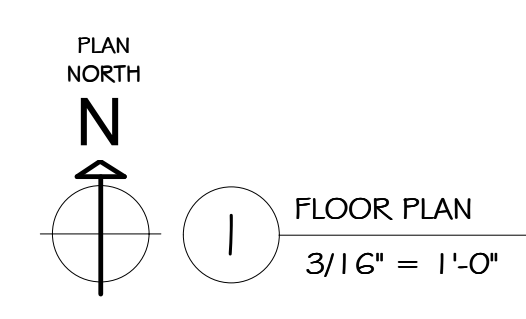
Advanced Structural Technologies

7212 Metro Blvd
Edina, MN 55439
(952) 854-9302 tel
(952) 854-9690 fax
www.astmn.com

© PROPERTY OF ADVANCED STRUCTURAL TECHNOLOGIES. THIS DOCUMENT MAY NOT BE USED OR COPIED WITHOUT THE PRIOR WRITTEN CONSENT OF ADVANCED STRUCTURAL TECHNOLOGIES.



NOTES FOR TYPICAL LIGHT-GAGE PARTITIONS:
1. SEE SHEET S110 FOR WALL STUD SCHEDULE AND HEADER SCHEDULE.
2. SEE 1/5/300 FOR TYPICAL WALL CONNECTIONS AT BASE.
3. SEE 1/05/300 FOR TYPICAL WALL CONNECTION AT TOP.
4. SEE 4-0/5300 FOR TYPICAL LIGHT-GAGE HEADER DETAILS.



FLOOR PLAN
3/16" = 1'-0"

PLAN NOTES:
1. 1" ON PLAN DENOTES W4x13 FULL-HT STEEL COL. FIELD VERIFY REQUIRED LENGTH PRIOR TO CONSTRUCTION.

DRAWN BY: AJM CHECKED BY: DCB
AST PROJECT NUMBER: ME 1001
PROJECT PHASE: CD

ISSUE / DATE:

100% CHECK SET	07-11-2014
BID/PERMIT	08-01-2014

REVISION:

SHEET TITLE:
FLOOR PLAN

SHEET NO:
S100