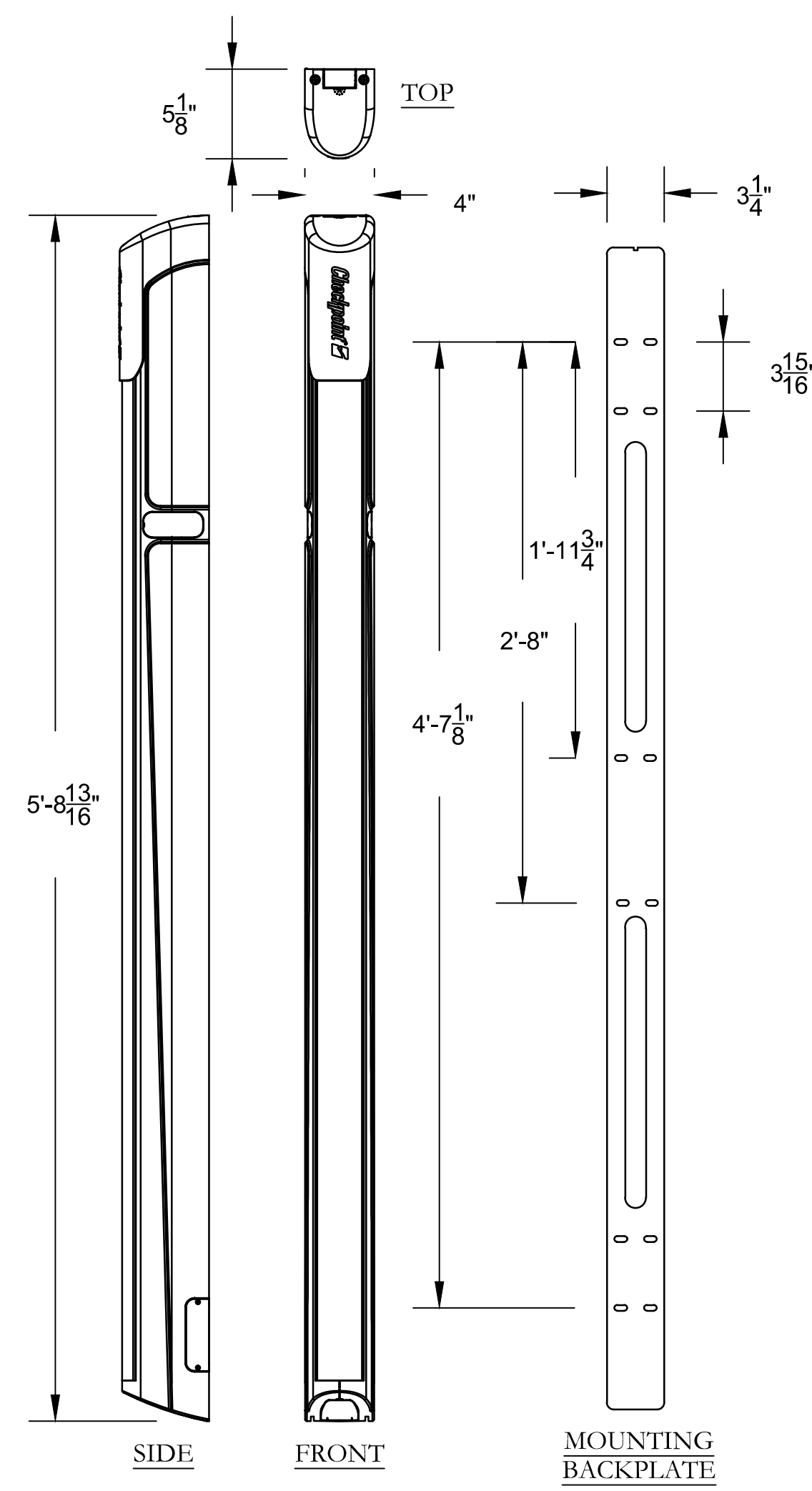


1 PLAN OVERVIEW

V100 SCALE: 1/4" = 1"



5 S10 PEDESTAL DETAILS

V100 SCALE: NONE

EVOLVE S10 ANTENNA

AISLE WIDTH:

- THE S10 SYSTEM IS DESIGNED TO BE INSTALLED ON A STANDARD 72" DOOR OPENING.

ANTENNA PLACEMENT / MOUNTING

- THE S10 ANTENNA IS MOUNTED TO THE DOOR FRAME OR WALL ON EITHER SIDE OF THE DOOR OPENING.
- THE S10 ANTENNA IS TYPICALLY PLACED 4" ABOVE THE FINISHED FLOOR.

MOUNTING SURFACES

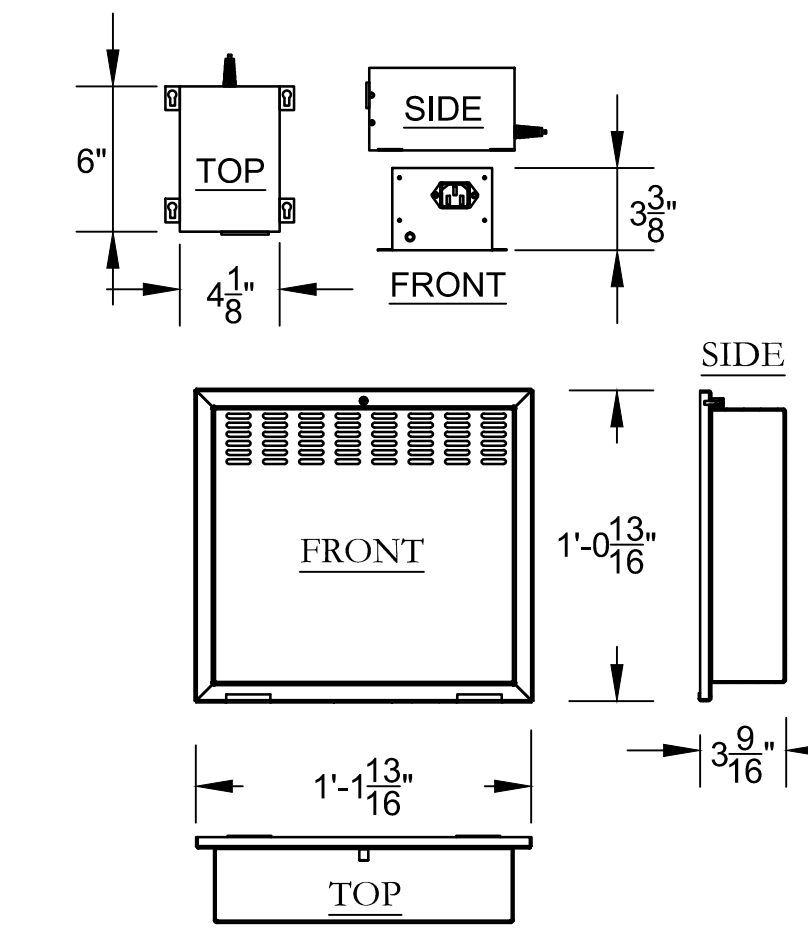
- METAL DOOR FRAME: STANDARD BACKPLATE
- WOOD / DRY-WALL: STANDARD BACKPLATE

WIRING (GENERAL)

- WIRING MUST BE ROUTED FROM EACH S10 ANTENNA TO THE ELECTRONICS ENCLOSURE (EE).
- THE CUSTOMER IS TYPICALLY RESPONSIBLE FOR INSTALLING CONDUIT, AND PROVIDING PULL-STRINGS
- WIRING IS PROVIDED BY, AND INSTALLED BY CHECKPOINT.

WIRE ROUTING

- **CONCEALED (BACK ENTRY)**
 - WIRING CAN BE CONCEALED IN THE WALL OR MULLION ON WHICH THE S10 ANTENNA IS MOUNTED.
 - FOR AN S10 ANTENNA (INSTALLED AT 4" ABOVE THE FLOOR), A 1" DIAMETER HOLE IS REQUIRED AT 54" ABOVE THE FINISHED FLOOR
- **EXTERNAL (TOP ENTRY)**
 - THE S10 ANTENNA WILL ACCEPT WIRING INTO THE TOP OF THE ANTENNA WHEN NECESSARY.
 - USE WIREMOLD (MODEL: NM2000) TO CARRY WIRE FROM THE CEILING, DOWN THE WALL / MULLION AND INTO THE TOP OF THE S10 ANTENNA.
- **EXTERNAL (BOTTOM ENTRY)**
 - THE S10 ANTENNA WILL ACCEPT WIRING INTO THE BOTTOM OF THE ANTENNA WHEN NECESSARY.
 - USE A FLOOR TRENCH (0.5" WIDE X 1.5" DEEP) OR 1500 / 2600 SERIES WIREMOLD TO ROUTE WIRE TO THE ANTENNA LOCATIONS.
 - USE WIREMOLD (MODEL: NM2000) TO ROUTE WIRING FROM THE FLOOR LEVEL TO THE UNDERSIDE OF THE ANTENNA (TYPICALLY A 4" SPAN).



ELECTRONICS ENCLOSURE (EE) AND POWER SUPPLY

REQUIREMENTS:

- THE EE UNIT MUST NOT BE FURTHER THAN 30' (LINEAR DISTANCE) FROM THE FURTHEST ANTENNA, AND MUST NOT BE CLOSER THAN 5' TO THE NEAREST ANTENNA.
- THE EE UNIT CAN BE MOUNTED TO WOOD, DRYWALL, OR CONCRETE, ABOVE THE CEILING, OR AT THE GROUND LEVEL.

POWER REQUIREMENTS:

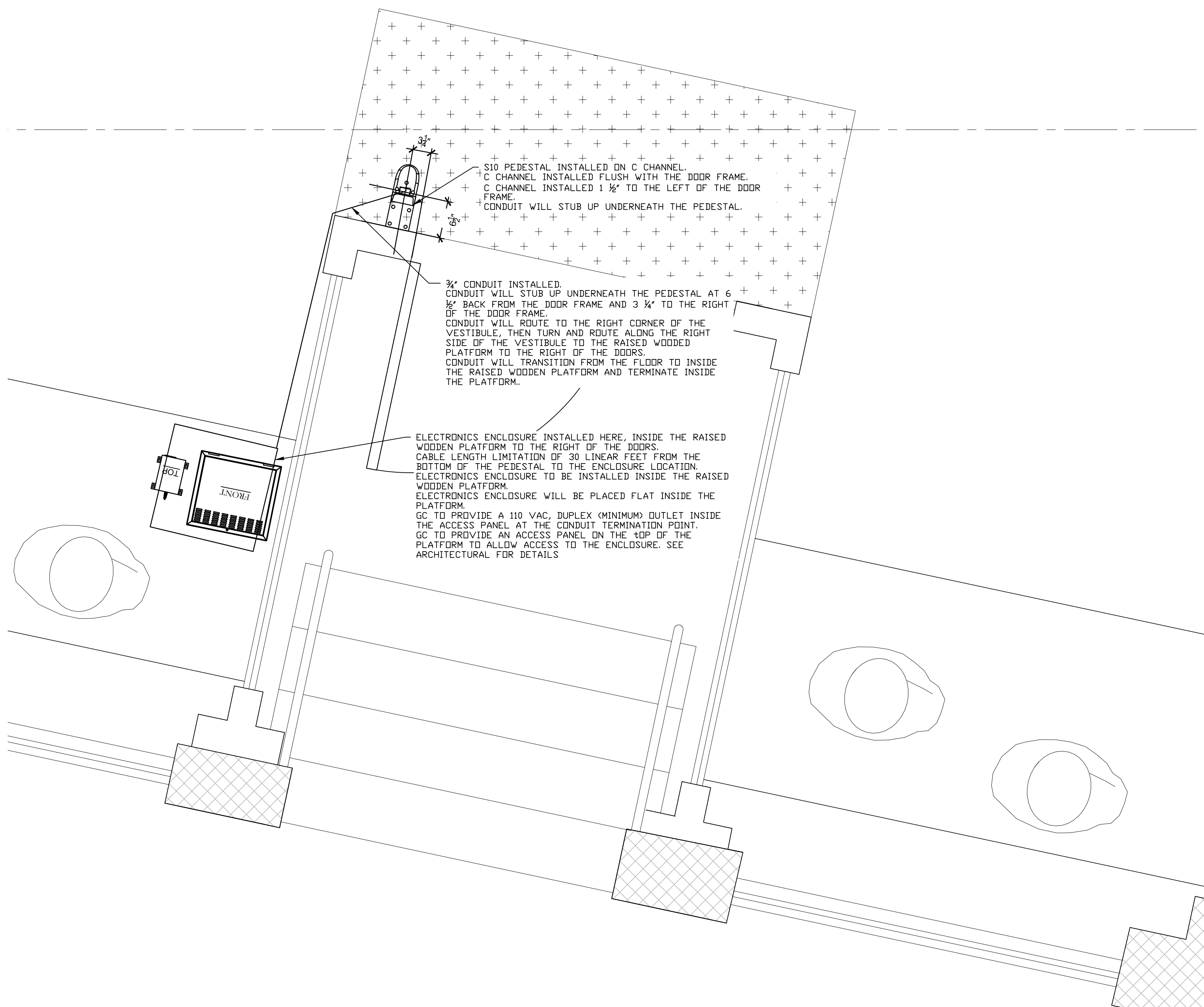
- THE EE UNIT REQUIRES ONE (1) +24VDC POWER SUPPLY PER EE UNIT (POWERS UP TO TWO (2) S10 ANTENNAS).

POWER OUTLET:

- ONE (1) POWER SUPPLY REQUIRES ONE (1) 115VAC SOCKET.
- THE OUTLET DOES NOT NEED TO BE AN ISOLATED CIRCUIT.

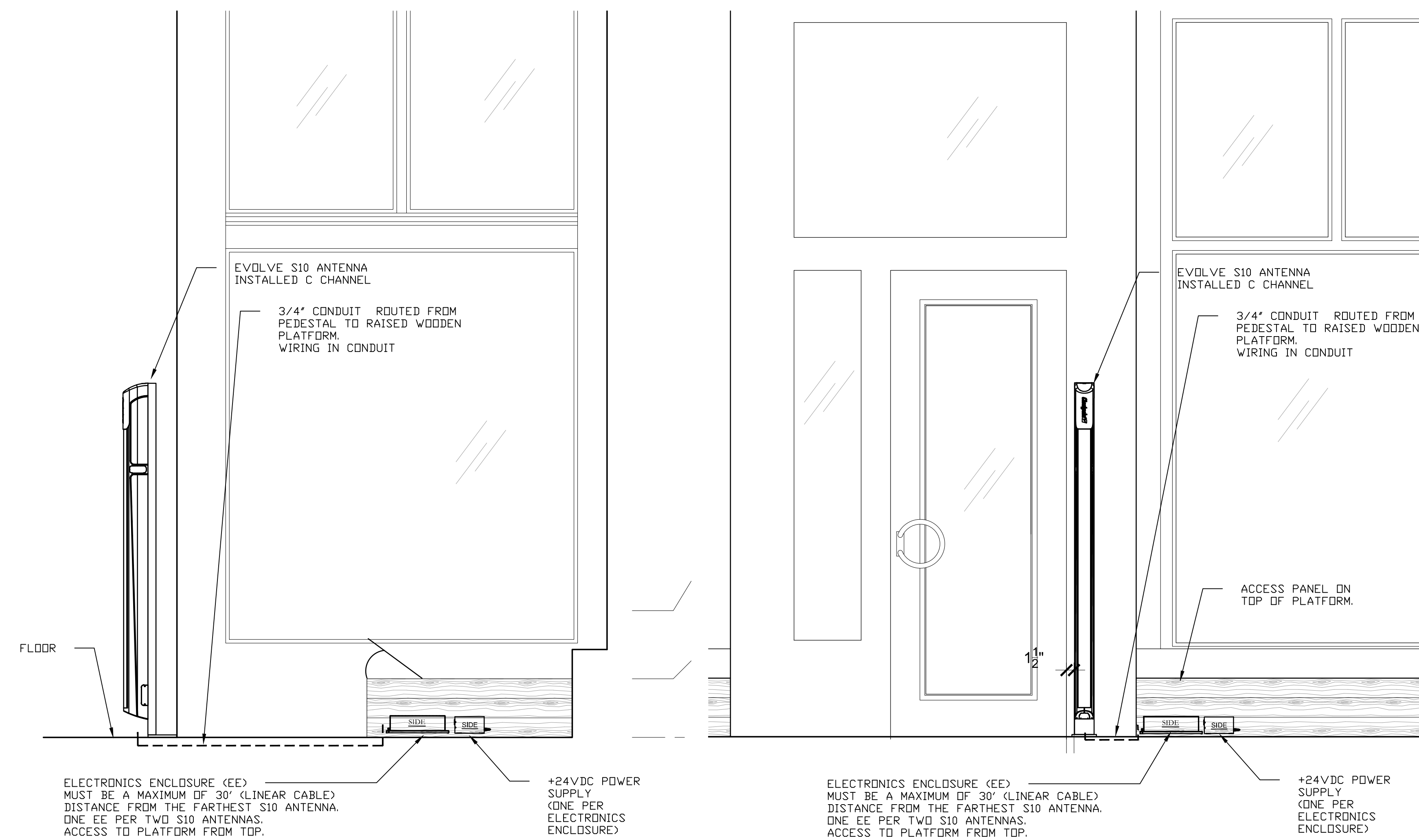
4 POWER SUPPLY DETAILS

V100 SCALE: NONE



2 EAS EQUIPMENT DETAIL (FRONT)

V100 SCALE: 1/4" = 1"



3 ELEVATION DETAILS (FRONT)

V100 SCALE: 1/4" = 1"