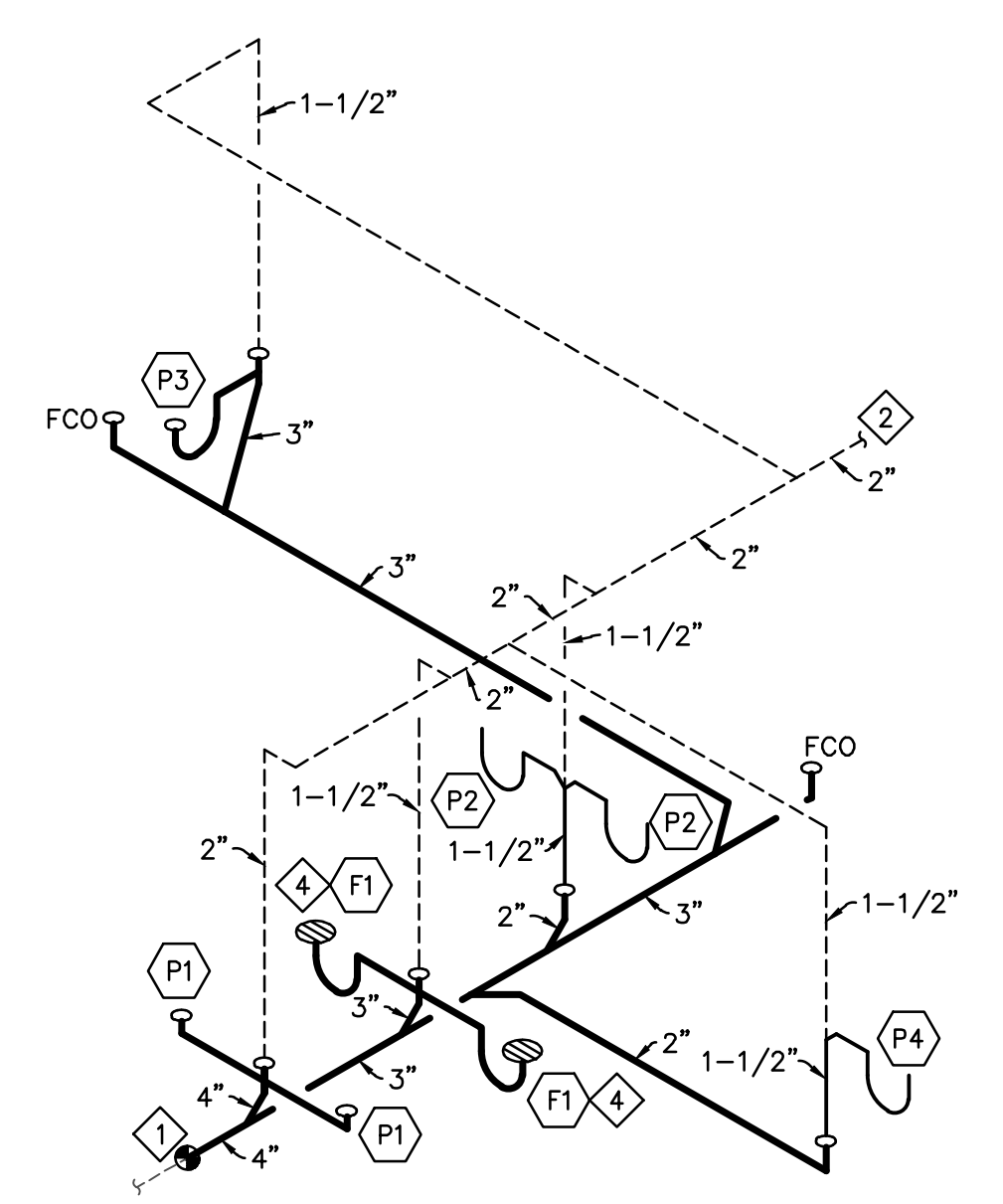
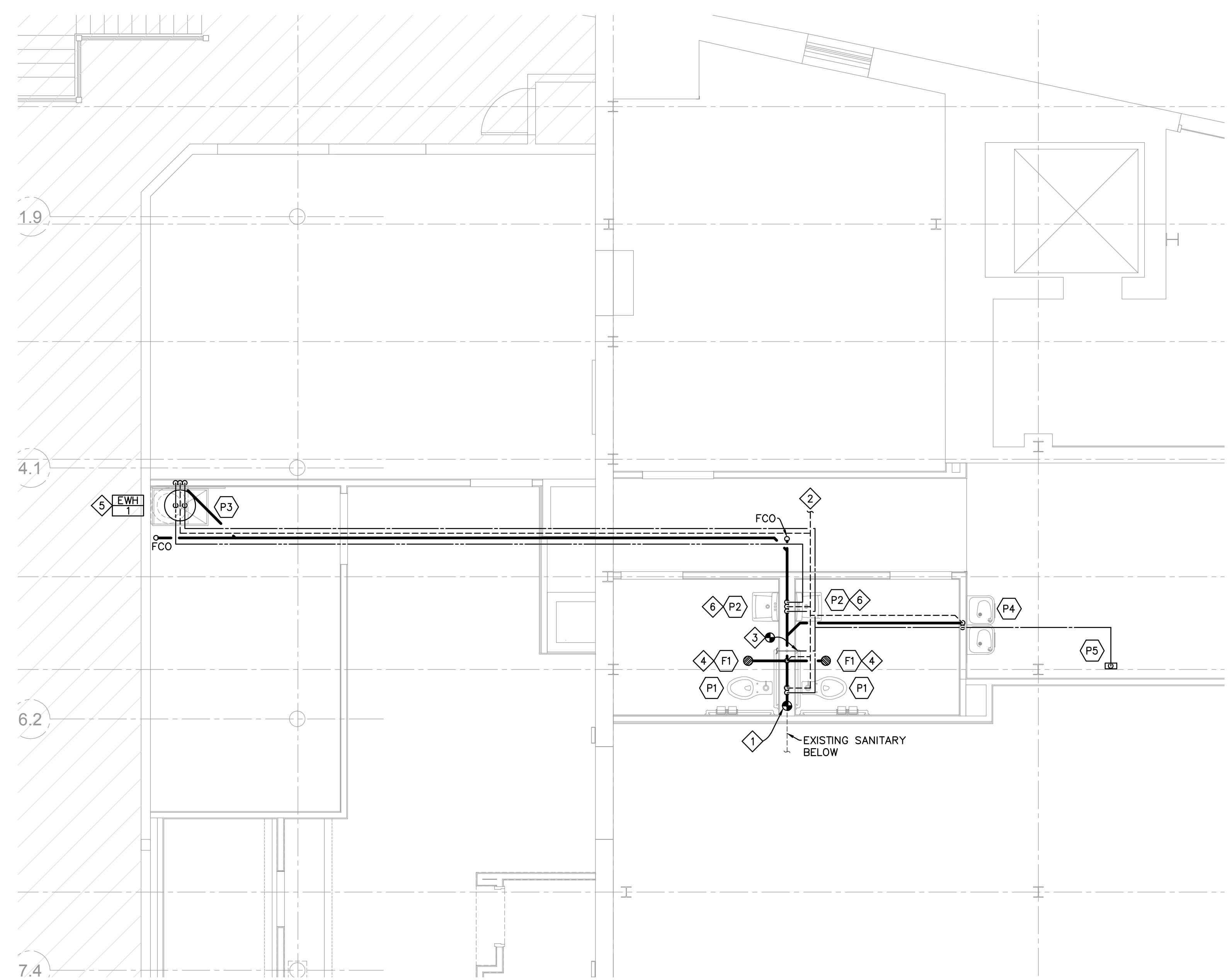


2 WATER RISER
NOT TO SCALE



3 WASTE AND VENT RISER
NOT TO SCALE



1 PLUMBING PLAN
1/4" = 1'-0"

- KEY NOTES**
- CONNECT NEW 4" SANITARY SEWER TO LANDLORD PROVIDED 4" SANITARY SEWER STUB. FIELD VERIFY EXACT LOCATION, SIZE, FLOW DIRECTION, AND INVERT ELEVATION OF CONNECTION POINT PRIOR TO ROUGH-IN OF NEW SANITARY SEWER.
 - CONNECT 2" VENT TO LANDLORD PROVIDED 2" VENT STUB. FIELD VERIFY EXACT LOCATION OF VENT STUB.
 - CONNECT NEW 1" CW PIPING TO LANDLORD PROVIDED 1-1/2" CW PIPING STUB. FIELD VERIFY EXACT LOCATION OF CW PIPING PRIOR TO ROUGH-IN. PROVIDE SHUTOFF VALVE AT POINT OF CONNECTION TO EXISTING.
 - PROVIDE JOSAM 88250 OR EQUAL TRAP PRIMER WITH ACCESSIBLE SHUT-OFF VALVE.
 - INSTALL ELECTRIC WATER HEATER ON PLATFORM ABOVE MOP SINK. PROVIDE ASME RATED T&P RELIEF VALVE PIPED TO MOP SINK. EXTEND SECONDARY DRAIN PIPE FROM DRAIN PAN TO TERMINATE AT MOP SINK WITH 90° ELL TURNED DOWN.
 - PROVIDE THERMOSTATIC MIXING VALVE EQUAL TO LEONARD MODEL Z70-LF FOR TEMPERED WATER TO LAVATORIES.

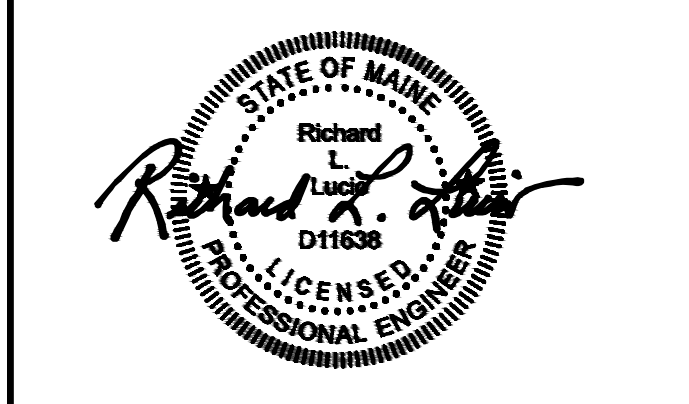
- GENERAL NOTES**
- SPECIFICATIONS, REFER TO PLUMBING SPECIFICATIONS FOR FURTHER INFORMATION AND REQUIREMENTS FOR PLUMBING CONTRACTOR.
 - SUSPEND ALL HORIZONTAL SERVICE PIPING SHOWN ON THIS PROJECT SUCH AS, BUT NOT LIMITED TO WATER, SANITARY WASTE/VENT, STORM WATER, GAS, ETCETERA FROM UNDERSIDE OF ROOF AND/OR FLOOR STRUCTURE, UNLESS OTHERWISE NOTED OR INDICATED. HOLD SUCH PIPING HIGH AS POSSIBLE. EXTEND PIPING DOWN IN WALLS, PARTITIONS, CHASES, ETCETERA TO SERVE FIXTURES AND EQUIPMENT AS SHOWN ON PLANS.
 - COORDINATE WITH THE WORK OF OTHER SECTIONS, EQUIPMENT FURNISHED BY OTHERS, REQUIREMENTS OF THE OWNER, AND WITH THE CONSTRAINTS OF THE EXISTING CONDITIONS OF THE PROJECT SITE. PROVIDE PIPE RISERS, DROPS, AND OFFSETS, AS REQUIRED FOR FIELD INSTALLATION AND TRADE COORDINATION. NOTIFY ARCHITECT OF ANY DISCREPANCIES BEFORE STARTING WORK.
 - DRAWINGS FOR PLUMBING WORK ARE DIAGRAMMATIC, SHOWING THE GENERAL LOCATION, TYPE, LAYOUT, AND EQUIPMENT REQUIRED. THE DRAWINGS SHALL NOT BE SCALED FOR EXACT MEASUREMENT. REFER TO ARCHITECTURAL DRAWINGS FOR DIMENSIONS. REFER TO MANUFACTURER'S STANDARD INSTALLATION DRAWINGS FOR EQUIPMENT CONNECTIONS AND INSTALLATION REQUIREMENTS. PROVIDE PIPING, CONNECTIONS, FITTINGS, VALVES, OFFSETS, ETCETERA AND ALL MATERIALS NECESSARY FOR A COMPLETE SYSTEM. SUBMIT SHOP DRAWINGS PER THE SPECIFICATIONS.
 - PROVIDE BACKFLOW PREVENTION DEVICES, (BPD) IN WATER LINES FEEDING PLUMBING FIXTURES AND/OR EQUIPMENT, AS SHOWN ON PLANS AND ELSEWHERE AS REQUIRED BY LOCAL AUTHORITIES. USE DEVICES OF APPROVED TYPE AND MANUFACTURER (ATMOSPHERIC VACUUM, PRESSURE VACUUM, DOUBLE CHECK, AND REDUCED PRESSURE).
 - VERIFY SERVICE CONNECTION POINTS, SIZES, ELEVATIONS, AND METERING LOCATIONS FOR PROJECT WITH LOCAL UTILITIES COMPANY'S AND/OR LANDLORD. SERVICES TO INCLUDE BUT NOT LIMITED TO DOMESTIC WATER, FIRE, SANITARY SEWER, STORM SEWER, ETCETERA.
 - WATER PRESSURE, PLUMBING CONTRACTOR SHALL VERIFY WATER PRESSURE PRIOR TO CONSTRUCTION. IF PRESSURE AT BUILDING ENTRY, PRIOR TO ALL LOCALLY REQUIRED DEVICES SUCH AS WATER METER, BACKFLOW PREVENTION DEVICES, ETCETERA IS LESS THAN 45 PSIG STATIC, CONTACT OWNERS REPRESENTATIVE. IF PRESSURE IS IN EXCESS OF 80 PSIG STATIC, INSTALLATION OF PRESSURE REDUCING VALVE IS REQUIRED.
 - WATER HAMMER ARRESTER SHALL BE INSTALLED THROUGHOUT PLUMBING WATER SYSTEMS AS REQUIRED.
 - WATER ENTRY SERVICE PIPING, NEW AND/OR REVISED, PLUMBING CONTRACTOR SHALL ENSURE AND PROVIDE MINIMUM 10'-0" LINEAR FEET OF METAL PIPING MATERIAL BELOW GRADE FOR CONNECTION OF ELECTRICAL SERVICE GROUNDING.
 - PLUMBING CONTRACTOR SHALL REFER TO DRAWING P200 FOR PLUMBING FIXTURE SCHEDULE.
 - PLUMBING CONTRACTOR TO COORDINATE WITH LANDLORD FOR ADEQUATE WATER PRESSURE & WATER STUB SIZE TO OPERATE A FLUSH VALVE WATER CLOSET (MINIMUM 30 PSI WATER PRESSURE).
 - PLUMBING CONTRACTOR TO INSTALL ALL PIPING WITHIN CHASE WALLS. NO PIPING IS PERMITTED WITHIN DEMISING WALLS.
 - THE PLUMBING CONTRACTOR SHALL NOT RUN PIPING OVER ELECTRICAL PANELS. PLUMBING CONTRACTOR TO COORDINATE WITH ELECTRICAL CONTRACTOR PRIOR TO STARTING WORK.
 - PVC PIPING IS PERMITTED ONLY IF ALLOWED BY LOCAL CODE.
 - PROVIDE ALL NECESSARY SAW CUTTING OF CONCRETE FLOORS, EXCAVATING AND BACKFILLING FOR THE INSTALLATION OF WORK SPECIFIED IN THE DIVISION. AFTER THE PIPE HAS BEEN INSTALLED, TESTED AND APPROVED, THE TRENCHES SHALL BE BACKFILLED AND WELL TAMPED TO GRADE WITH APPROVED MATERIAL. PLUMBING CONTRACTOR SHALL RE-POUR THE FLOOR.
 - PLUMBING CONTRACTOR SHALL COORDINATE WITH THE LANDLORD FOR ADEQUATE WATER PRESSURE AND WATER STUB SIZE TO OPERATE FIXTURES.

PLUMBING SYMBOLS	
---	EXISTING PIPING (SEE DRAWING)
---	COLD WATER (CW)
---	COLD WATER (CW) - BELOW SLAB/GRADE
F	FIRE PROTECTION (F) (SPRINKLER/STANDPIPE)
SP	FIRE PROTECTION (SP) (STANDPIPE)
---	HOT WATER (HW) 140', 120'
---	HOT WATER (CW) - BELOW SLAB/GRADE
G	GAS LINE (G)
D	CONDENSATE LINE (D)
OD	OVERFLOW DRAIN PIPING (OD)
V	PLUMBING VENT (V)
---	PLUMBING VENT (V) - BELOW SLAB/GRADE
SAN	SANITARY WASTE (SAN) - ABOVE GRADE
SAN	SANITARY WASTE (SAN) - BELOW SLAB/GRADE
ST	STORM LINE (ST) - ABOVE SLAB/GRADE
ST	STORM LINE (ST) - BELOW SLAB/GRADE
OST	OVERFLOW STORM LINE (OST) - ABOVE SLAB/GRADE
OST	OVERFLOW STORM LINE (OST) - BELOW SLAB/GRADE
o	PIPE TURNING UP/DOWN
o	TEE TURNING UP/DOWN
o	SHUTOFF VALVE (BALL TYPE)
o	CHECK VALVE
o	BALANCING VALVE
o	FIXTURE IDENTIFICATION
o	PLAN NOTE
AFF/AFG	ABOVE FINISHED FLOOR/GRADE
VTR	VENT THRU ROOF
CO	CLEANOUT
WCO	WALL CLEANOUT
FFCO/FGCO	FLUSH FLOOR/GRADE CLEANOUT
(E)	EXISTING
o	CONNECT TO EXISTING

NewStudio
4431 Lake Avenue South
White Bear Lake, MN 55110
p: 651.207.5527 f: 651.207.8247

ANTHROPOLOGIE
60 Pearl Street
Portland, ME 04101

HALLBERG ENGINEERING
Mechanical/Electrical Consulting Engineers
1750 Commerce Court, White Bear Lake, MN 55110
(651) 748-1100 • Fax (651) 748-9370



DRAWN BY: MDB CHECKED BY: CDS/RLL
NSA PROJECT NUMBER: 2013-99
PROJECT PHASE: CD
HEI PROJECT NUMBER: R14-1941-000
ISSUE / DATE:
100% CHECKSET 07-11-2014
BID/PERMIT 08-01-2014

REVISION:

SHEET TITLE:
ENLARGED PLUMBING PLAN
SHEET NO:

P100