

CEILING LEGEND

SYMBOL	DESCRIPTION	NOTES/REMARKS
	SUPPLY AIR VENT	REFER TO MECHANICAL DRAWINGS
	RETURN AIR VENT	REFER TO MECHANICAL DRAWINGS
	EXHAUST VENT	REFER TO MECHANICAL DRAWINGS
	SURFACE MOUNTED SPEAKER	REFER VENDOR DRAWINGS FOR SPEAKER INFORMATION
	RECESSED SPEAKER	REFER VENDOR DRAWINGS FOR SPEAKER INFORMATION
	CEILING MOUNTED DUPLEX OUTLET	ALL CEILING OUTLETS IN WOOD TO HAVE BLACK FACE PLATE
	TRACK LIGHTING	SEE MOUNTING HEIGHT DIAGRAM A220 FOR TYPICAL
	EXIT SIGNAGE	REFER TO ELECTRICAL
	FLUORESCENT FIXTURE	SUSPENDED
	PENDANT FIXTURE	REFER TO LIGHTING SCHEDULE
	RECESSED DOWNLIGHT	REFER TO LIGHTING SCHEDULE
	SURFACE MOUNTED LINEAR FLUORESCENT UPLIGHT	REFER TO LIGHTING SCHEDULE
	SPRINKLER LINE & HEAD	
	HVAC DUCT	
	SURFACE MOUNTED EMERGENCY LIGHT	
	CEILING HOOK	SEE DETAILS ON A220
	PEOPLE COUNTER	
	AIR FILTRATION SYSTEM	SEE TSM SCHEDULE

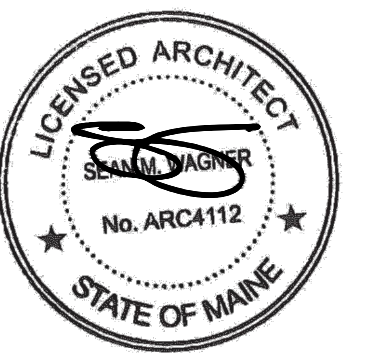
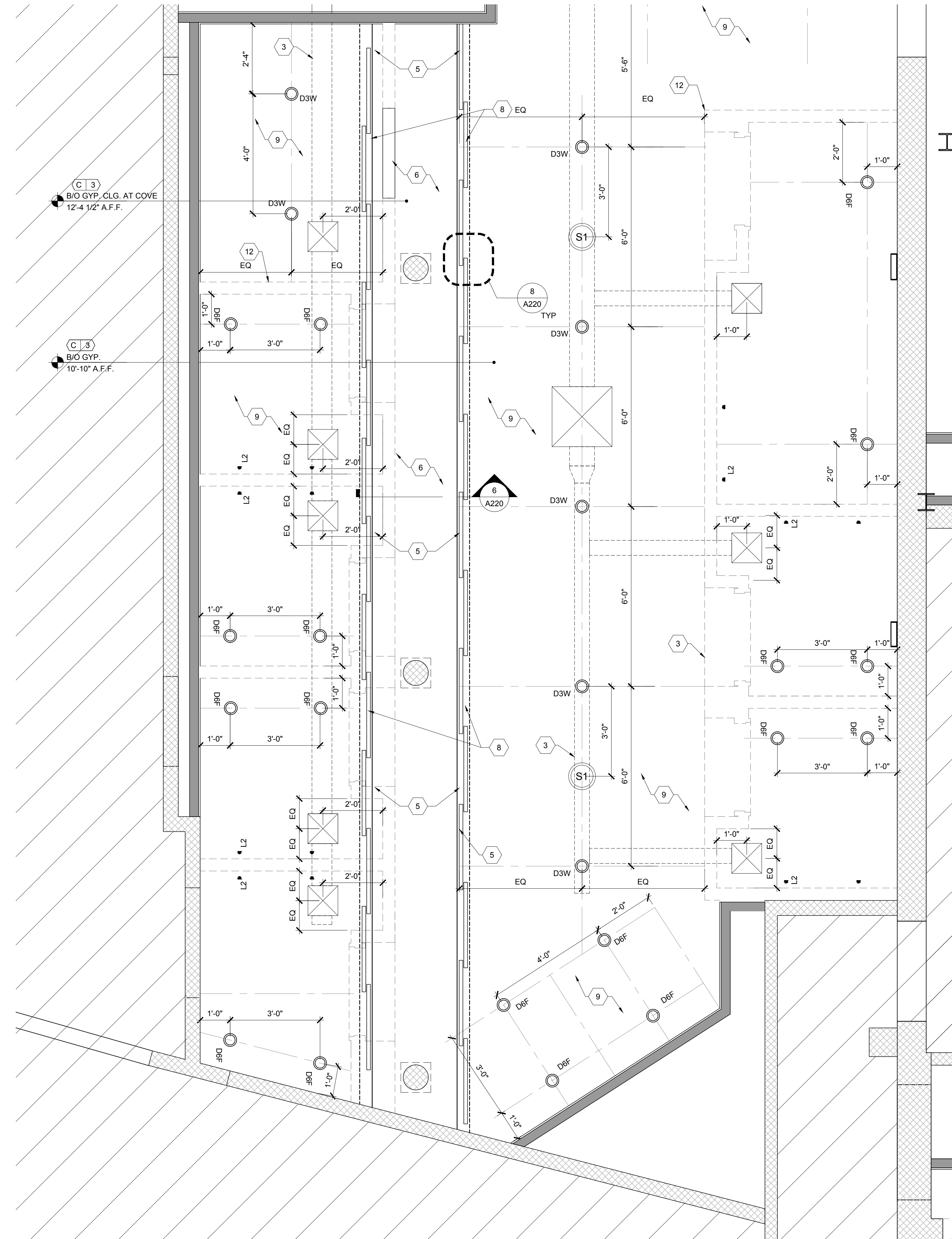
NOTE: LIGHT HOUSING SHOWN DASHED FOR REFERENCE ONLY. REFER TO MFR. SPECS FOR SPECIFIC LIGHT HOUSING AND CLEARANCE INFORMATION.

REFLECTED CEILING PLAN NOTES

- NOTE, NOT ALL FIXTURE TYPES SHOWN IN SCHEDULE ARE USED IN PLAN. REFERENCE REFLECTED CEILING PLAN FOR FIXTURES USED ON THIS PROJECT.
- LIGHTING PLAN AND SCHEDULE SHOWN FOR FIXTURE LAYOUT AND DIMENSIONAL REFERENCE ONLY. REFER ELECTRICAL DRAWINGS FOR ELECTRICAL WIRING INFORMATION.
- GYP CEILING USES SUSPENDED ARMSTRONG SEISMIC RX CEILING SYSTEM. INSTALL IN STRICT CONFORMANCE WITH ICC-ES REPORT #ESR-1308. SEE A200
- MATERIALS IN CONCEALED SPACES SHALL COMPLY WITH 2003 IBC SECTION 603.1 & 717.5
- REFER TO MOUNTING HEIGHT DIAGRAM ON SHEET A220 FOR MORE INFORMATION
- PAINT ALL DUCTWORK, OUTLETS, CONDUIT, J-BOXES, SPRINKLER LINES/GRID, ETC. TO MATCH SURROUNDING CEILING. (C 3)

REFLECTED CEILING PLAN KEYNOTES

- WALL MOUNT TRACK ABOVE WINDOW- CENTER BETWEEN CEILING AND WINDOW
- EXPOSED MECHANICAL DUCTWORK- REFER TO MECHANICAL FOR DUCT SIZING AND LAYOUT. PAINT (C 3)
- MECHANICAL DUCT ABOVE CEILING- REFER TO MECHANICAL DRAWINGS FOR DUCT SIZING AND LAYOUT
- CHECKPOINT ACCESS PANEL- USE "SALES: GYP BD CEILING" ACCESS PANEL- REFER TO VENDOR DRAWINGS
- CEILING COVE
- EXISTING LANDLORD PROVIDED CEILING- VERIFY FINAL HEIGHT IN FIELD.
- EXPOSED MECHANICAL DUCTWORK AT BACK OF HOUSE- REFER TO MECHANICAL FOR DUCT SIZING AND LAYOUT- NO PAINT
- LINEAR FLORESCENTS AT CEILING COVE- C21- OVERLAP 2" REFER TO LIGHTING SCHEDULE
- LOWERED GYP. CEILING
- REFER TO 7/A433 FOR DUCTWORK AT MASONRY WALL PENETRATION- DUCTS TO PASS UNDER LINTEL
- "BOH NON RATED CEILING" ACCESS PANEL
- DASHED LINE REPRESENTS PARTIAL HEIGHT PARTITION WALLS BELOW
- SECURE CEILING HOOK TO EXISTING JOIST- FIELD VERIFY LOCATION
- SURFACE MOUNT LIGHTING TRACK
- MOUNT AIR FILTRATION UNIT AT 10'-0" AFF
- COORDINATE SUSPENDED FLUORESCENT FIXTURES WITH EXPOSED DUCTWORK IN THE FIELD



ARCHITECTS
I hereby certify that this plan, specification, or report was prepared by me or under my direct supervision and that I am a duly Licensed Architect under the laws of the State of Maine.

Print Name: Sean M. Wagner, AIA

Date: 08-01-2014 License #: ARC4112

NewStudioArchitecture

4431 Lake Avenue South
White Bear Lake, MN 55110

p: 651.207.5527 f: 651.207.8247

ANTHROPOLOGIE

60 Pearl Street
Portland, ME 04101

DRAWN BY: BH CHECKED BY: SWM

NSA PROJECT NUMBER: 2013-99

PROJECT PHASE: CD

ISSUE / DATE:

100% CHECKSET 07-11-2014

BID/PERMIT 08-01-2014

REVISION:

SHEET TITLE:
**ENLARGED
FITTING ROOM
REFLECTED
CEILING PLAN**

SHEET NO:

A211