

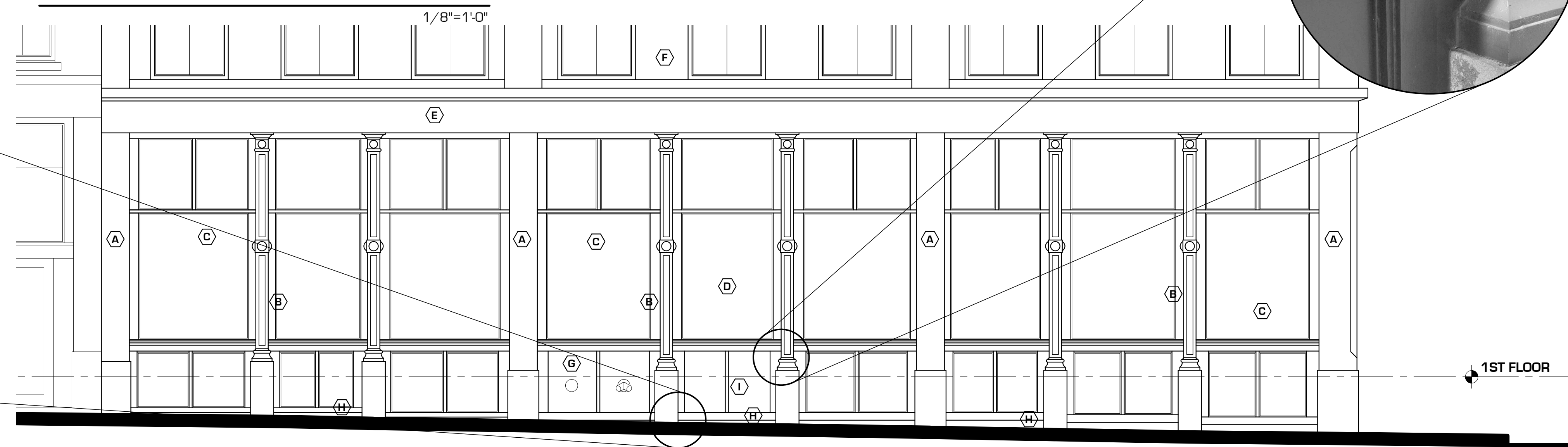
FACADE RENOVATION NOTES:

- (A) GRANITE PIERS TO REMAIN
- (B) METAL DECORATIVE COLUMNS WITH GRANITE BASES TO REMAIN
- (C) GLASS STOREFRONT TO REMAIN, TYP.
- (D) GLASS STOREFRONT TO BE REMOVED
- (E) GRANITE FREEZE TO REMAIN
- (F) NO WORK AT BRICK FACADE
- (G) EXISTING FIRE DEPARTMENT CONNECTION EQUIPMENT TO REMAIN
- (H) PRESERVE GRANITE BASES, TYP.
- (I) EXISTING PANEL MOTIF TO BE REMOVED



BERRY SHOE BLOCK **EMERY WATERHOUSE BLOCK**

EXISTING ELEVATION
1/8"=1'-0"



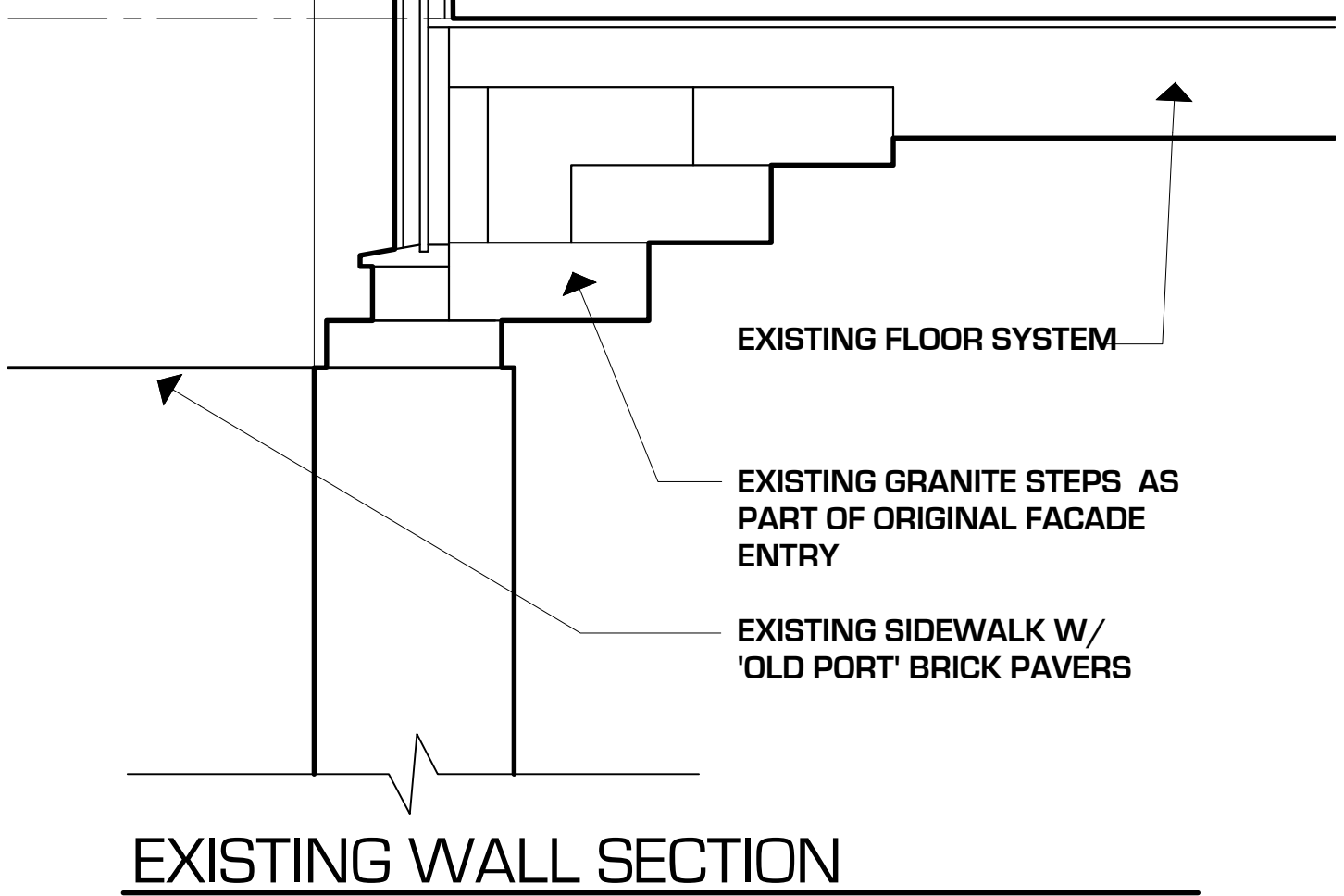
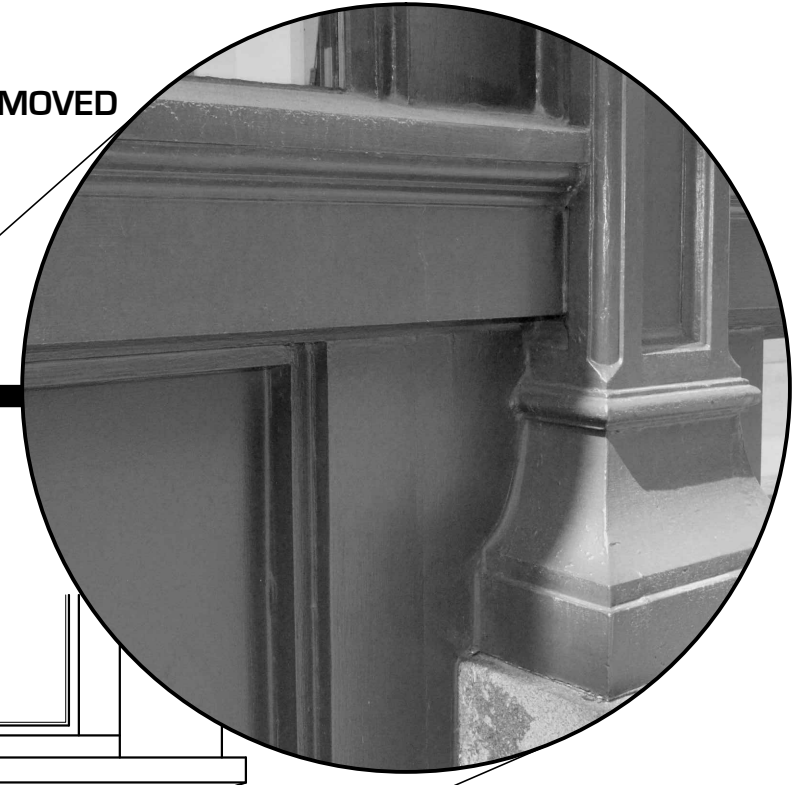
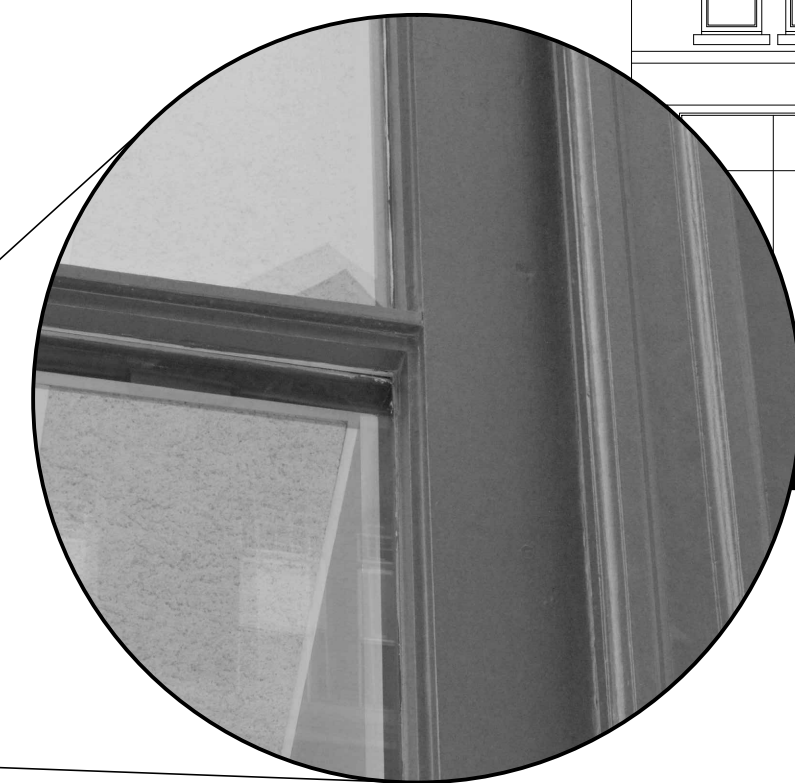
ENLARGED EXISTING ELEVATION
1/4"=1'-0"

GLASS STOREFRONT TRANSOM TO REMAIN

HORIZONTAL MULLION TO BE MODIFIED PER PROPOSED DETAIL

GLASS STOREFRONT TO BE REMOVED

DECORATIVE WOOD PANEL MOTIF TO BE REMOVED

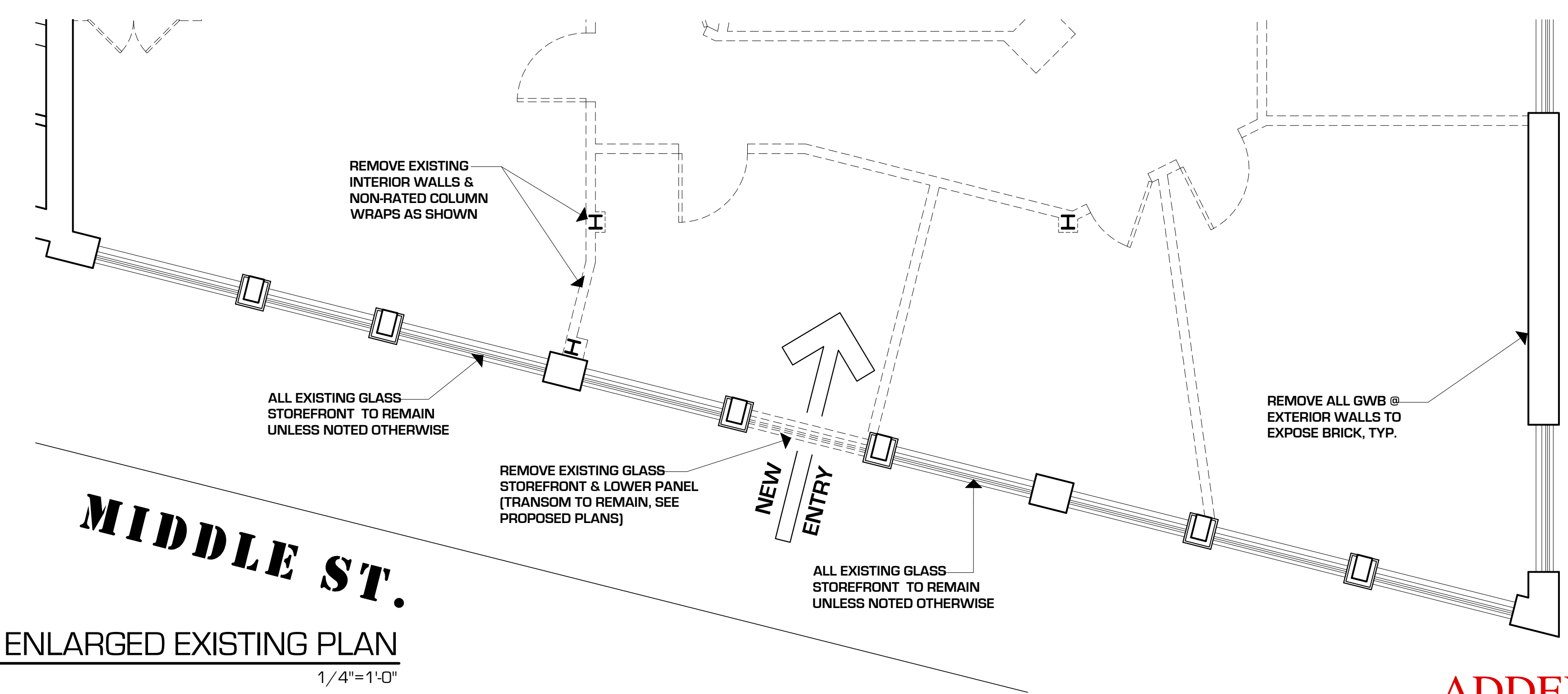


EXISTING WALL SECTION
3/4"=1'-0"

EXISTING FLOOR SYSTEM

EXISTING GRANITE STEPS AS PART OF ORIGINAL FACADE ENTRY

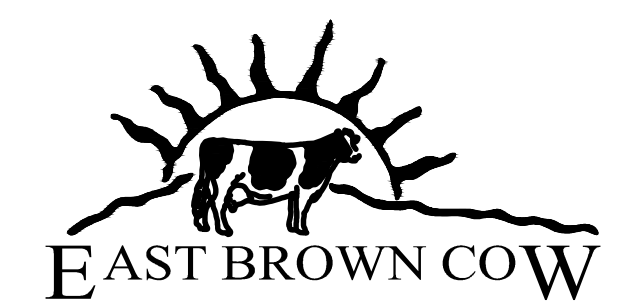
EXISTING SIDEWALK W/ 'OLD PORT' BRICK PAVERS



ENLARGED EXISTING PLAN
1/4"=1'-0"

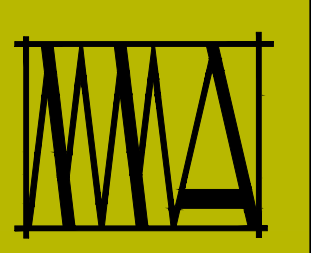
MIDDLE ST.

PEARL ST.



EAST BROWN COW

ADDENDA SET: AUGUST 04, 2014
BUILDING PERMIT SET: JULY 01, 2013



MARK MUELLER ARCHITECTS
A.I.A.
100 Commercial Street
Suite 205
Portland, Maine 04101
Phone: 207.774.9057
Email: rfm@muellerarchitects.com

© COPYRIGHT 2014
MARK MUELLER ARCHITECTS

ANTHROPOLOGIE
66 PEARL STREET
PORTLAND, MAINE

INTERIOR DEMOLITION

EXISTING CONDITIONS

REVISIONS	DATE
PROJECT	ANTHROPOLOGIE
DRAWN BY	MRP
CHECK BY	MJM

EC-1.1