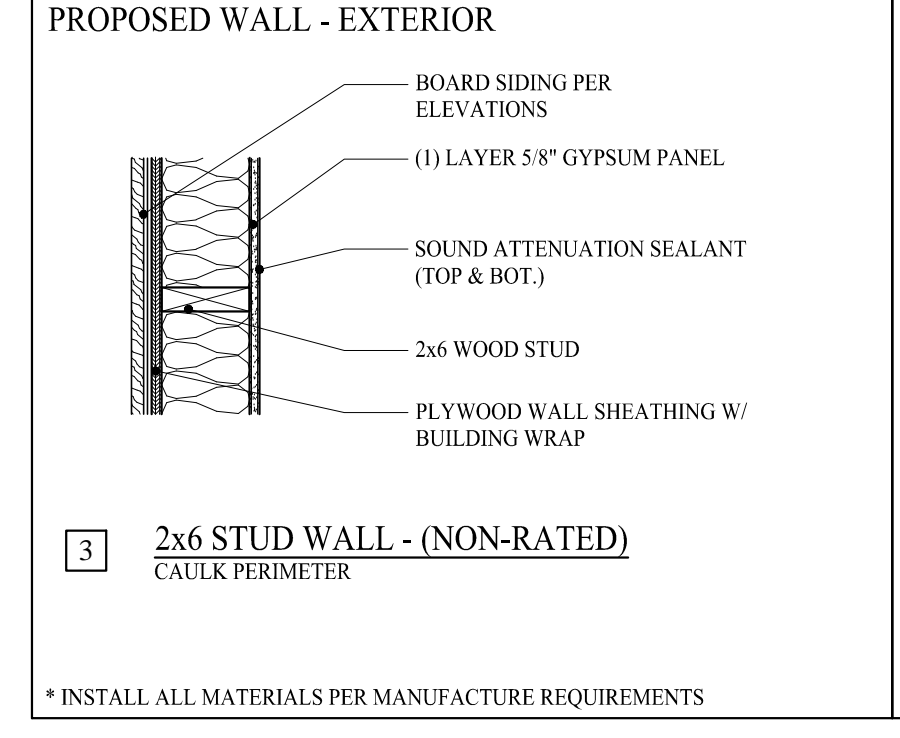
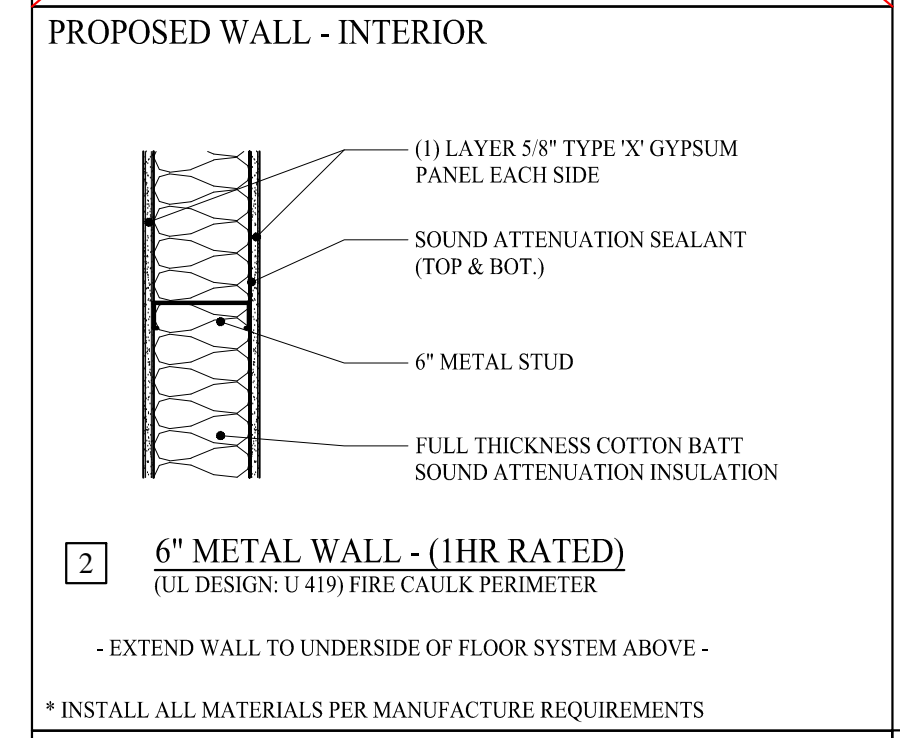
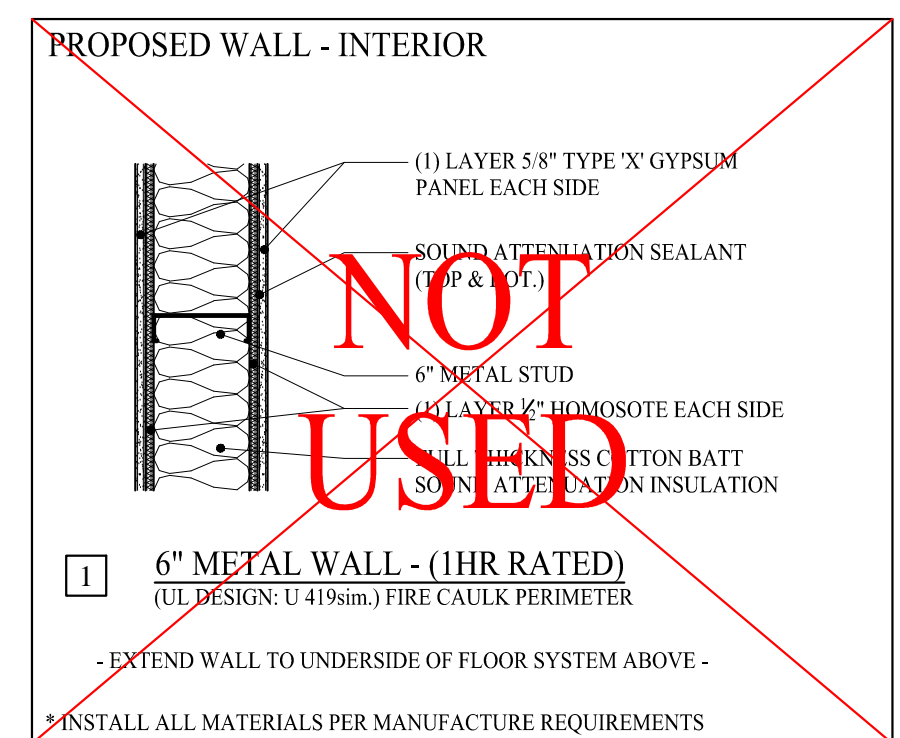
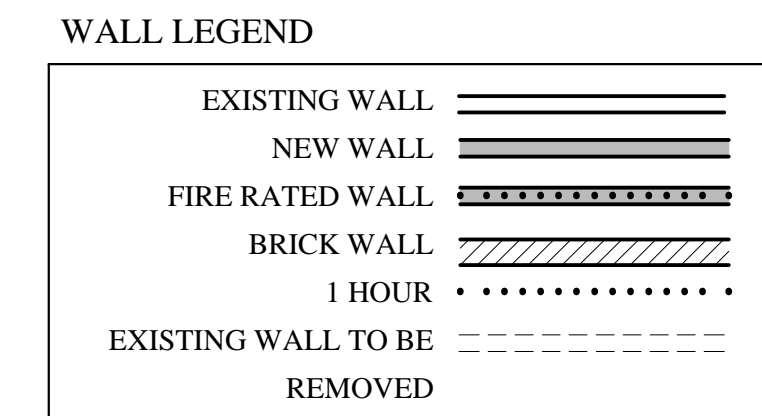


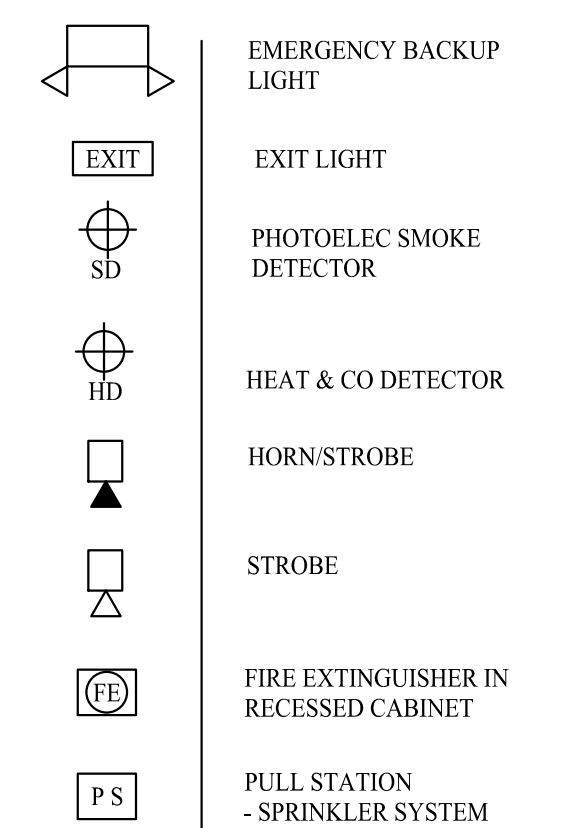
**KEY PLAN**  
1/16"=1'-0"

AREA OF NEW  
TENANT  
SPACE WORK

AREA OF NEW  
ENTRY VESTIBULE  
@ FACADE



**LIFE SAFETY LEGEND:**



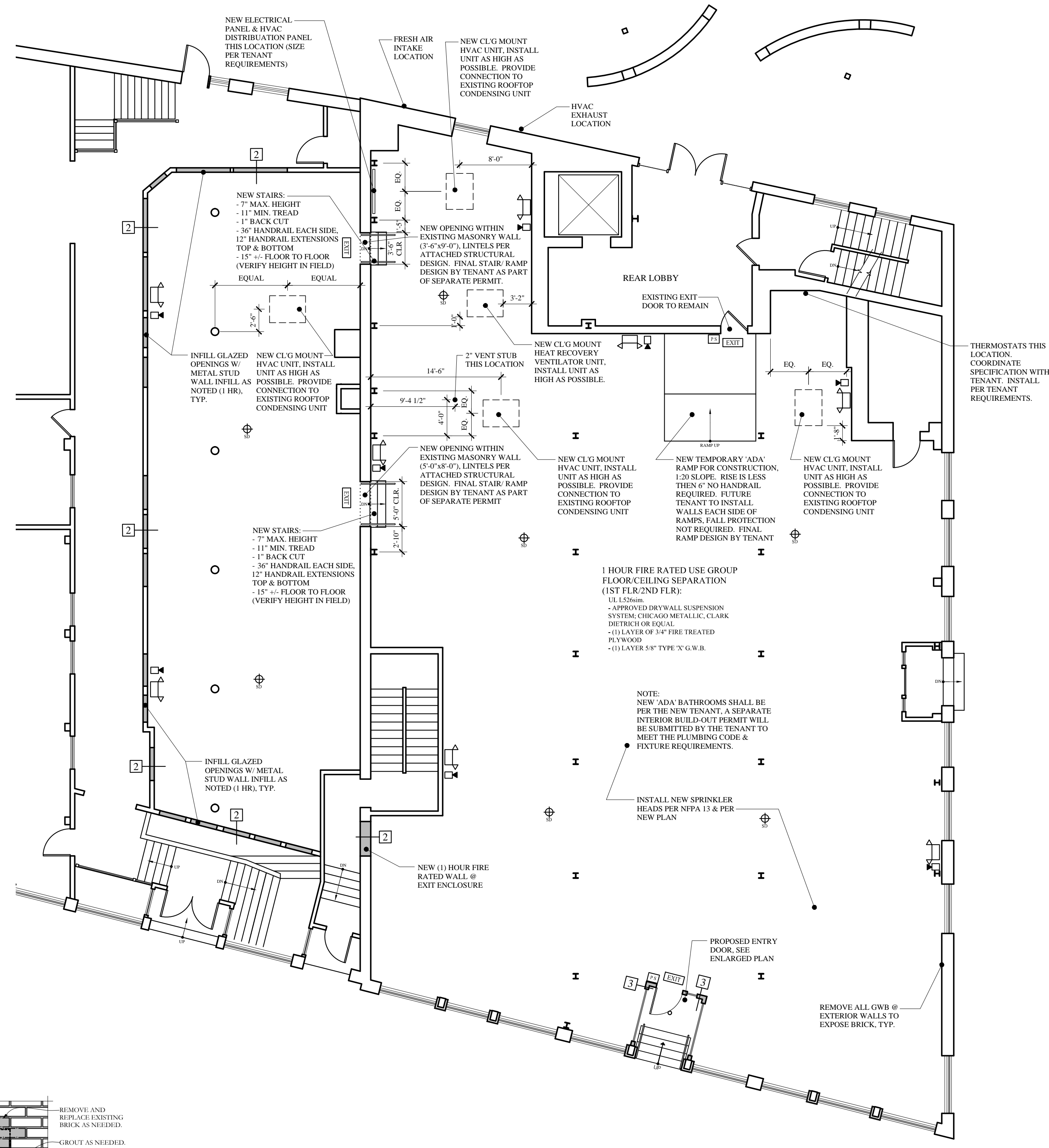
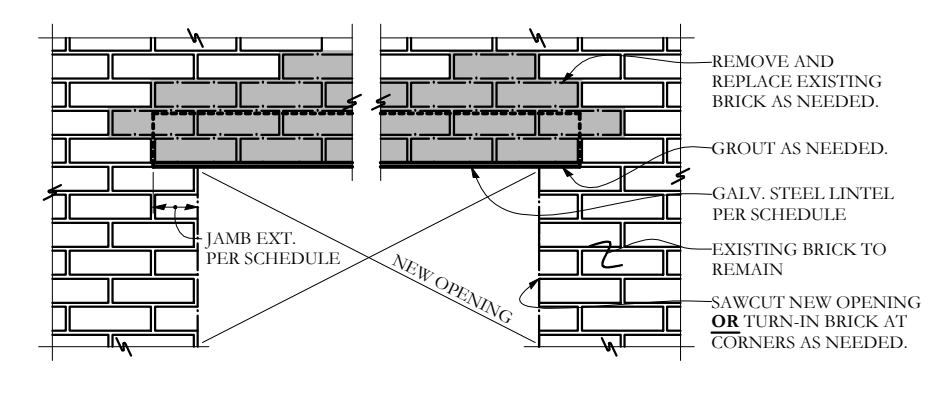
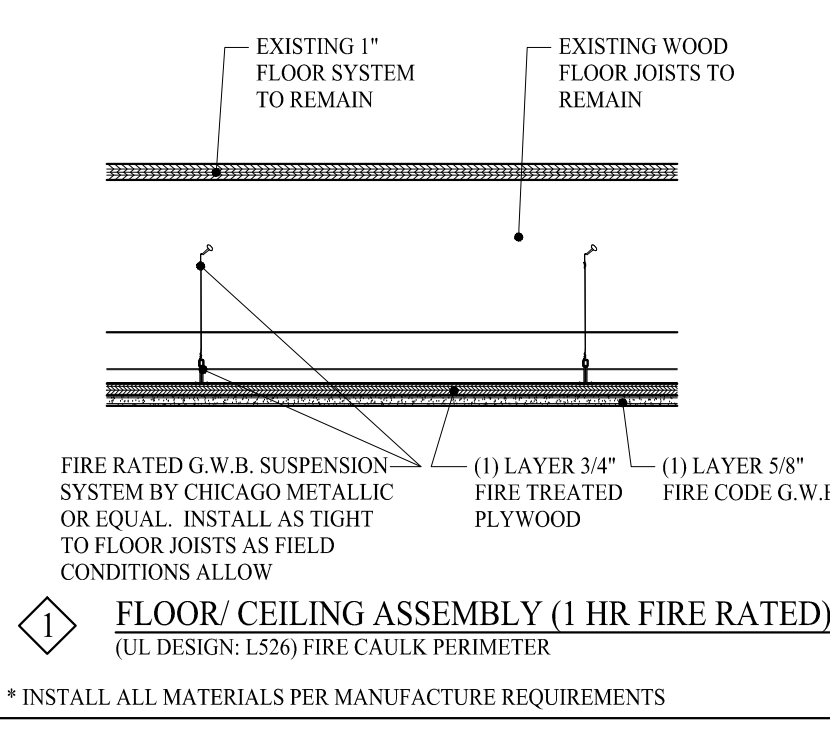
**LIFE SAFETY NOTES:**

-LIFE SAFETY AND FIRE ALARM SYSTEMS SHALL BE DESIGNED AND INSTALLED PER NFPA 72, BY A CITY/ STATE APPROVED CONTRACTOR WITH A SEPERATE PERMIT.

-ALL STROBES TO BE 30 CANDELA UNLESS OTHERWISE NOTED.

-SYSTEM SHALL BE SUPERVISED BY AN OFF-SITE CERTIFIED BY THE CITY OF PORTLAND THIRD PARTY

-EXISTING LIFE SAFETY SYSTEM SHALL REMAIN, TYP EACH SIDE



**PROPOSED 1ST FLOOR PLAN**  
1/8"=1'-0"

**MARK MUELLER ARCHITECTS**  
A.I.A.  
100 Commercial Street  
Suite 205  
Portland, Maine 04101  
Phone: 207.774.9057  
Email: rfm@muellerarchitects.com

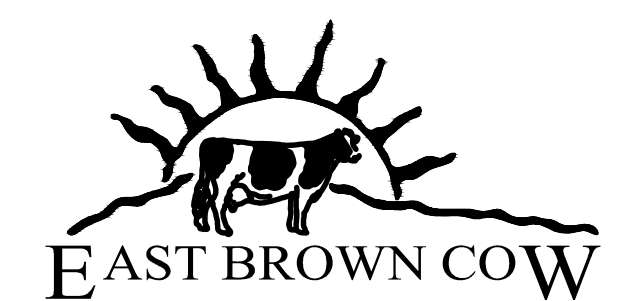
© COPYRIGHT 2014  
MARK MUELLER ARCHITECTS

**ANTHROPOLOGIE**  
66 PEARL STREET  
PORTLAND, MAINE

INTERIOR DEMOLITION

**PROPOSED FLOOR PLAN**

REVISIONS	DATE
	JULY 2014
PROJECT	ANTHROPOLOGIE
DRAWN BY	MRP
CHECK BY	MM



**ADDENDA SET: AUGUST 04, 2014**  
**BUILDING PERMIT SET: JULY 01, 2013**

**A-1.1**