

**FACADE RENOVATION NOTES:**

- (A) GRANITE PIERS TO REMAIN
- (B) METAL DECORATIVE COLUMNS WITH GRANITE BASES TO REMAIN
- (C) GLASS STOREFRONT TO REMAIN, TYP.
- (D) GLASS STOREFRONT TO BE REMOVED
- (E) GRANITE FREEZE TO REMAIN
- (F) NO WORK AT BRICK FACADE
- (G) EXISTING FIRE DEPARTMENT CONNECTION EQUIPMENT TO REMAIN
- (H) PRESERVE GRANITE BASES, TYP.
- (I) EXISTING PANEL MOTIF TO BE REMOVED

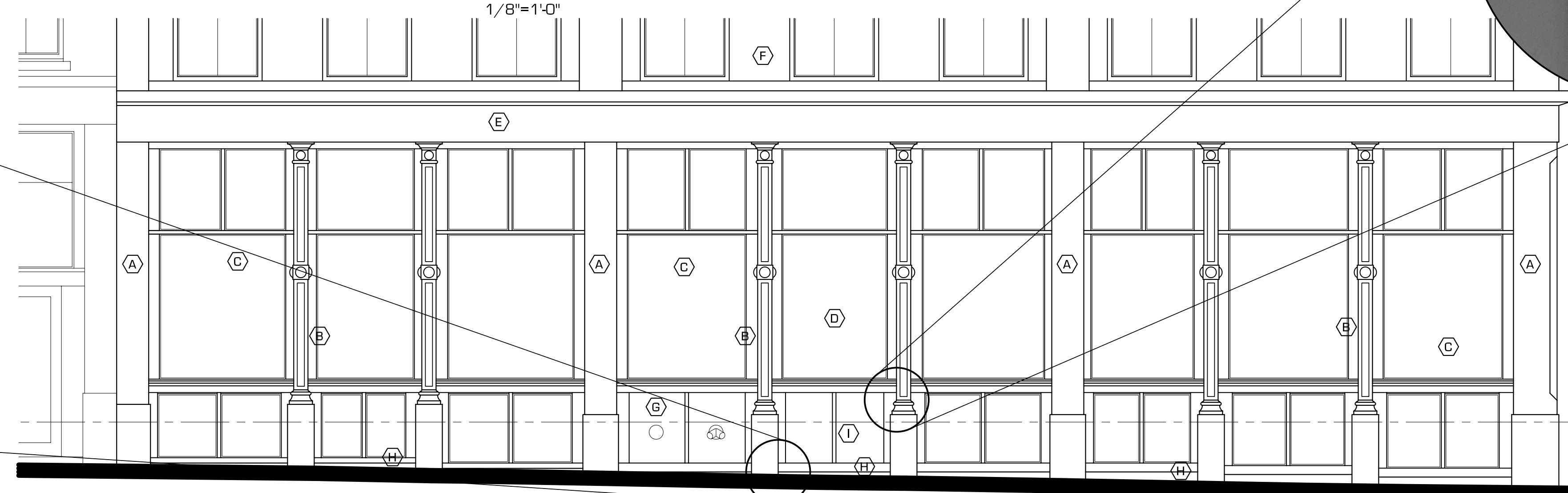


**BERRY SHOE BLOCK**

**EMERY WATERHOUSE BLOCK**

**EXISTING ELEVATION**

1/8"=1'-0"



**ENLARGED EXISTING ELEVATION**

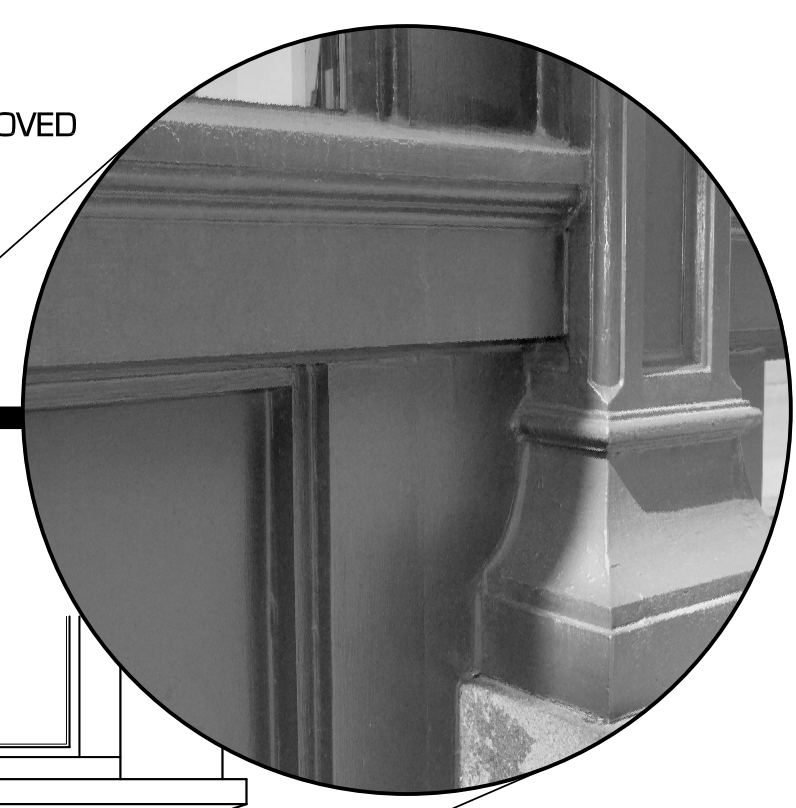
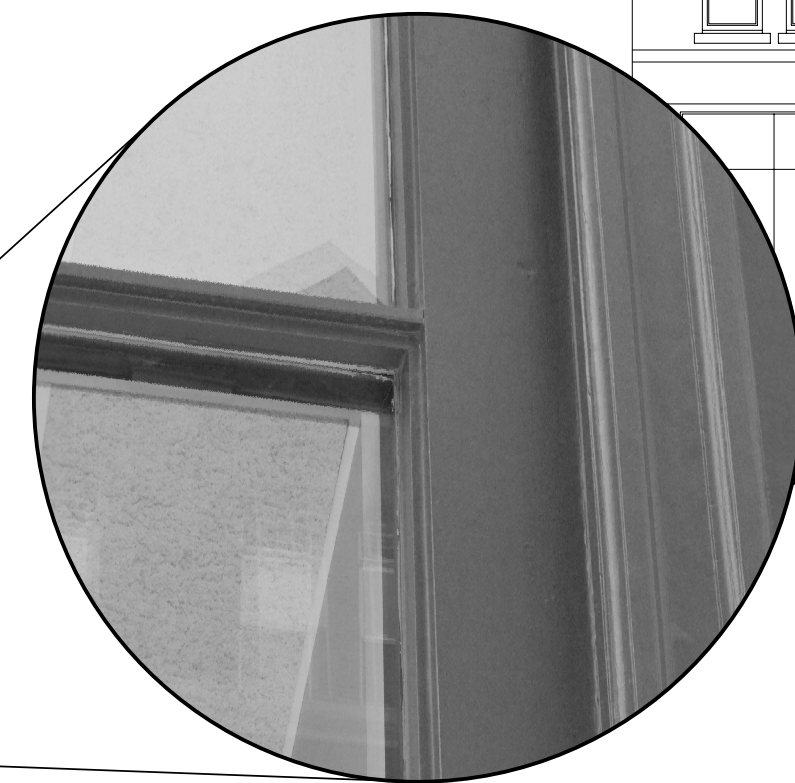
1/4"=1'-0"

GLASS STOREFRONT TRANSOM TO REMAIN

HORIZONTAL MULLION TO BE MODIFIED PER PROPOSED DETAIL

GLASS STOREFRONT TO BE REMOVED

DECORATIVE WOOD PANEL MOTIF TO BE REMOVED



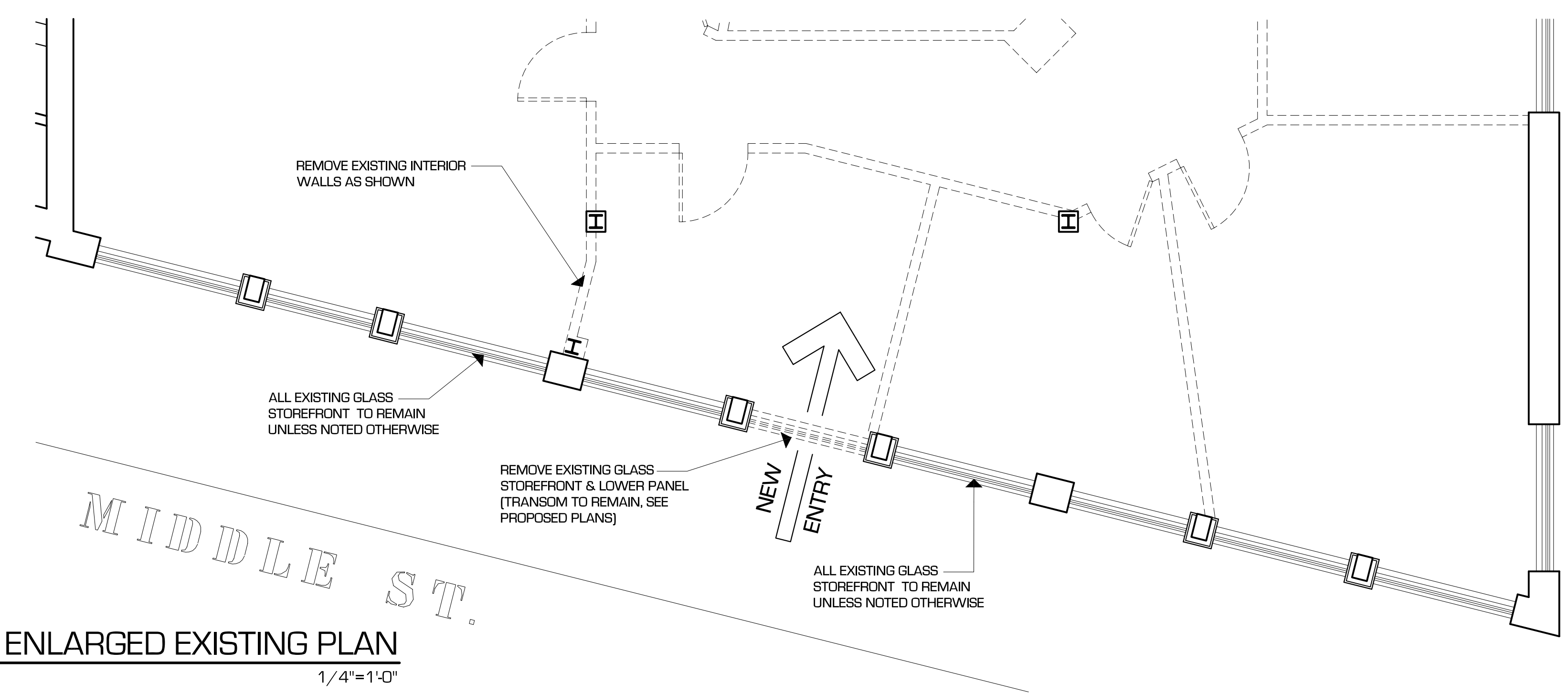
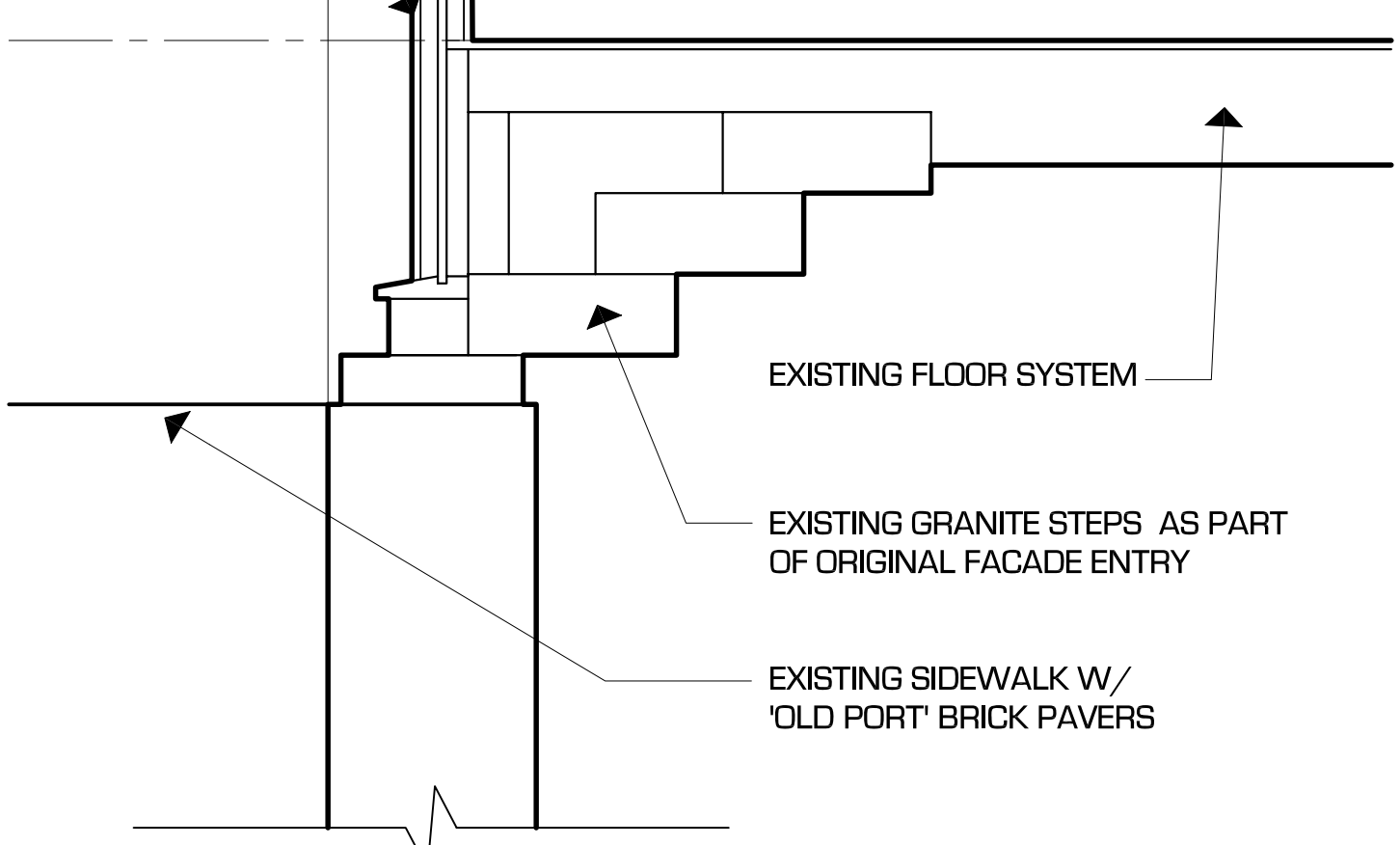
EXISTING FLOOR SYSTEM

EXISTING GRANITE STEPS AS PART OF ORIGINAL FACADE ENTRY

EXISTING SIDEWALK W/ 'OLD PORT' BRICK PAVERS

**EXISTING WALL SECTION**

3/4"=1'-0"



REMOVE EXISTING INTERIOR WALLS AS SHOWN

ALL EXISTING GLASS STOREFRONT TO REMAIN UNLESS NOTED OTHERWISE

REMOVE EXISTING GLASS STOREFRONT & LOWER PANEL (TRANSOM TO REMAIN, SEE PROPOSED PLANS)

ALL EXISTING GLASS STOREFRONT TO REMAIN UNLESS NOTED OTHERWISE

**ENLARGED EXISTING PLAN**

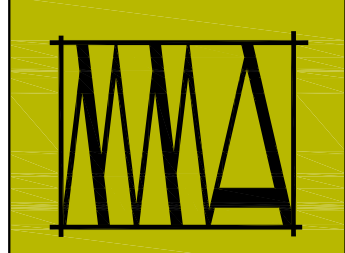
1/4"=1'-0"

MIDDLE ST.

PEARL ST.

PEARL ST.

1ST FLOOR



**MARK MUELLER ARCHITECTS**  
A.I.A.  
100 Commercial Street  
Suite 205  
Portland, Maine 04101  
Phone/Fax 207.774.9057  
Email: rfm@muellerarchitects.com

© COPYRIGHT 2013  
MARK MUELLER ARCHITECTS

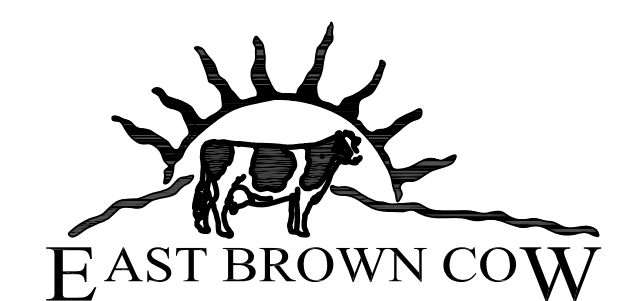
EMERY WATERHOUSE BLOCK

66 PEARL STREET  
PORTLAND, MAINE

ENTRY DOOR VESTIBULE:

EXISTING CONDITIONS

REVISIONS	DATE
	June 2013
PROJECT	66 PEARL ENTRY
DRAWN BY	MRP
CHECK BY	MLM



**EAST BROWN COW**

**BUILDING PERMIT SET: JULY 01, 2013**

**EC-1.1**