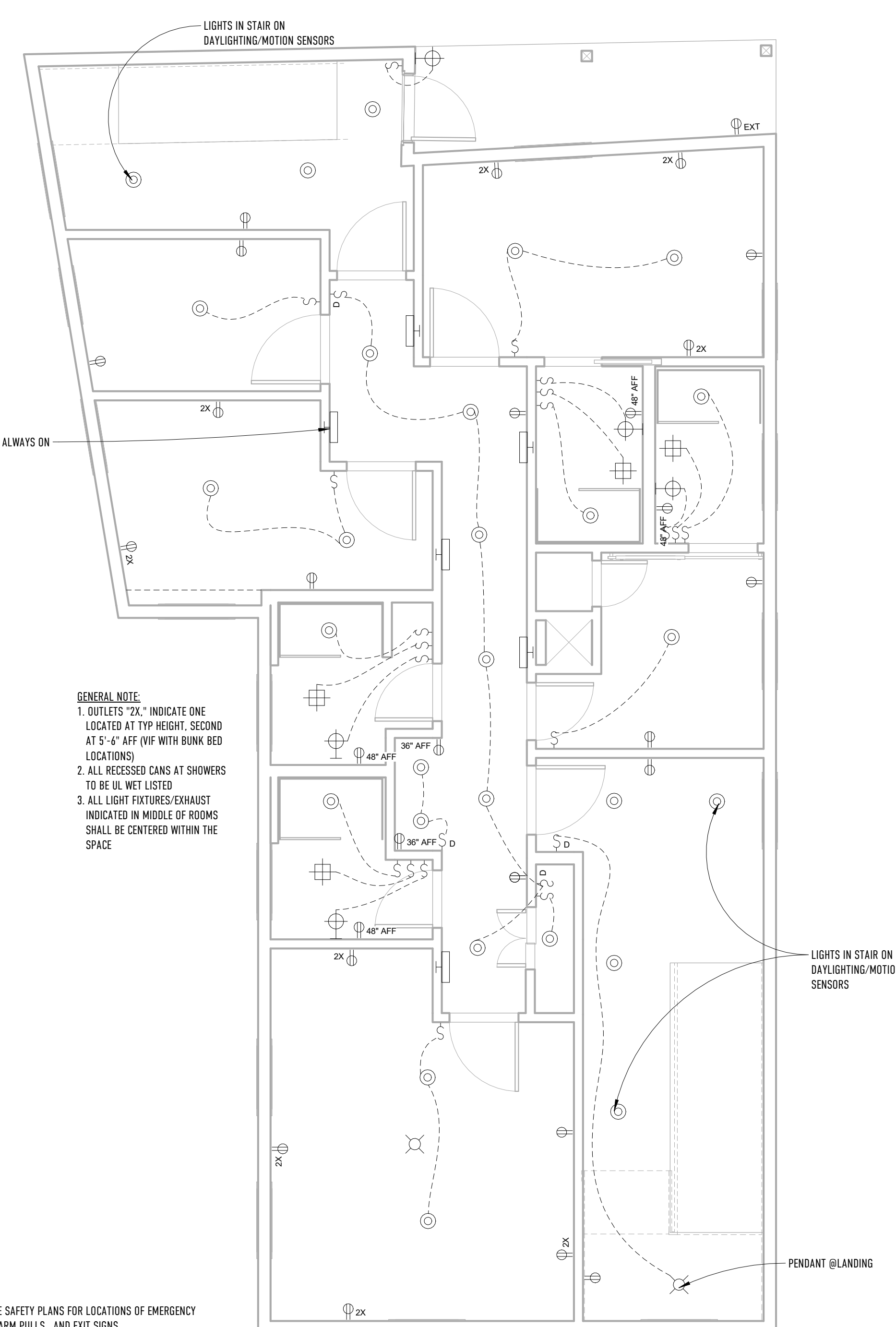


GENERAL NOTE
 1. OUTLETS "2X," INDICATE ONE LOCATED AT TYP HEIGHT, SECOND AT 5'-6" AFF (VIF WITH BUNK BED LOCATIONS)
 2. ALL RECESSED CANS AT SHOWERS TO BE UL WET LISTED
 3. ALL LIGHT FIXTURES/EXHAUST INDICATED IN MIDDLE OF ROOMS SHALL BE CENTERED WITHIN THE SPACE

1 FIRST FLOOR
 1/4" = 1'-0"



GENERAL NOTE
 1. OUTLETS "2X," INDICATE ONE LOCATED AT TYP HEIGHT, SECOND AT 5'-6" AFF (VIF WITH BUNK BED LOCATIONS)
 2. ALL RECESSED CANS AT SHOWERS TO BE UL WET LISTED
 3. ALL LIGHT FIXTURES/EXHAUST INDICATED IN MIDDLE OF ROOMS SHALL BE CENTERED WITHIN THE SPACE

NOTE:
 REFER TO LIFE SAFETY PLANS FOR LOCATIONS OF EMERGENCY LIGHTING, ALARM PULLS, AND EXIT SIGNS.

2 SECOND FLOOR
 1/4" = 1'-0"

ELECTRICAL/LIGHTING SYMBOL LEGEND			
	DUPLEX OUTLET		SURFACE MOUNTED LIGHT FIXTURE
	DUPLEX OUTLET - GFI		RECESSED LIGHT FIXTURE
	COMBINATION RECEPTACLE AND DUAL USB CHARGER		WALL MOUNTED LIGHT FIXTURE
	DUPLEX OUTLET FOR EXTERIOR INSTALLATION		EXHAUST FAN/LIGHT
	240V DRYER OUTLET		GARAGE DOOR OPENER
	240V RANGE OUTLET		4' SURFACE MOUNTED FLUORESCENT LIGHT FIXTURE
	20 AMP OUTLET		UNDER-CABINET LIGHT FIXTURE
	2-GANG OUTLET		PENDANT LIGHT FIXTURE
	SINGLE SWITCH		WALL MOUNTED STRIP LIGHT
	3-WAY SWITCH		CEILING FAN/LIGHT
	DIMMER SWITCH		CENTRAL VACUUM INTLET

REVISIONS:

33 HAMPSHIRE
 ELECTRICAL/LIGHTING

A110

33 HAMPSHIRE ST. PORTLAND, MAINE 04101

DATE OF ISSUE: 12/12/2017

ISSUED FOR: PERMIT AMENDMENT

SCALE: 1/4" = 1'-0"

THIS DRAWING IS THE PROPERTY OF BARRETT MADE AND IS NOT TO BE REPRODUCED OR TRANSMITTED IN ANY FORM OR BY ANY MEANS, ELECTRONIC OR MECHANICAL, INCLUDING PHOTOCOPYING, RECORDING, OR BY ANY INFORMATION STORAGE AND RETRIEVAL SYSTEM. BARRETT MADE 48 BUNK HOUSE PORTLAND MAINE 04101 2017.010.0421