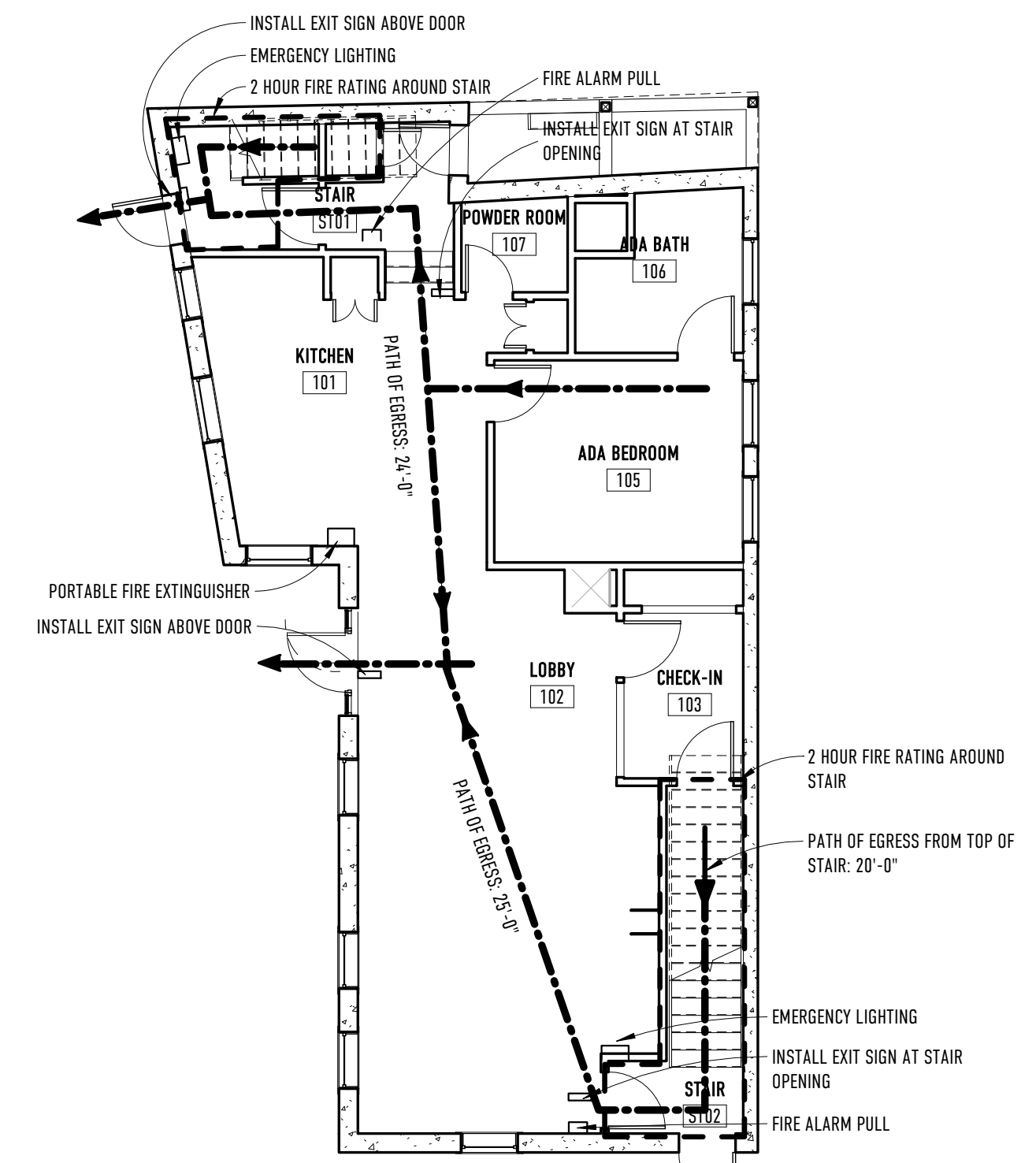
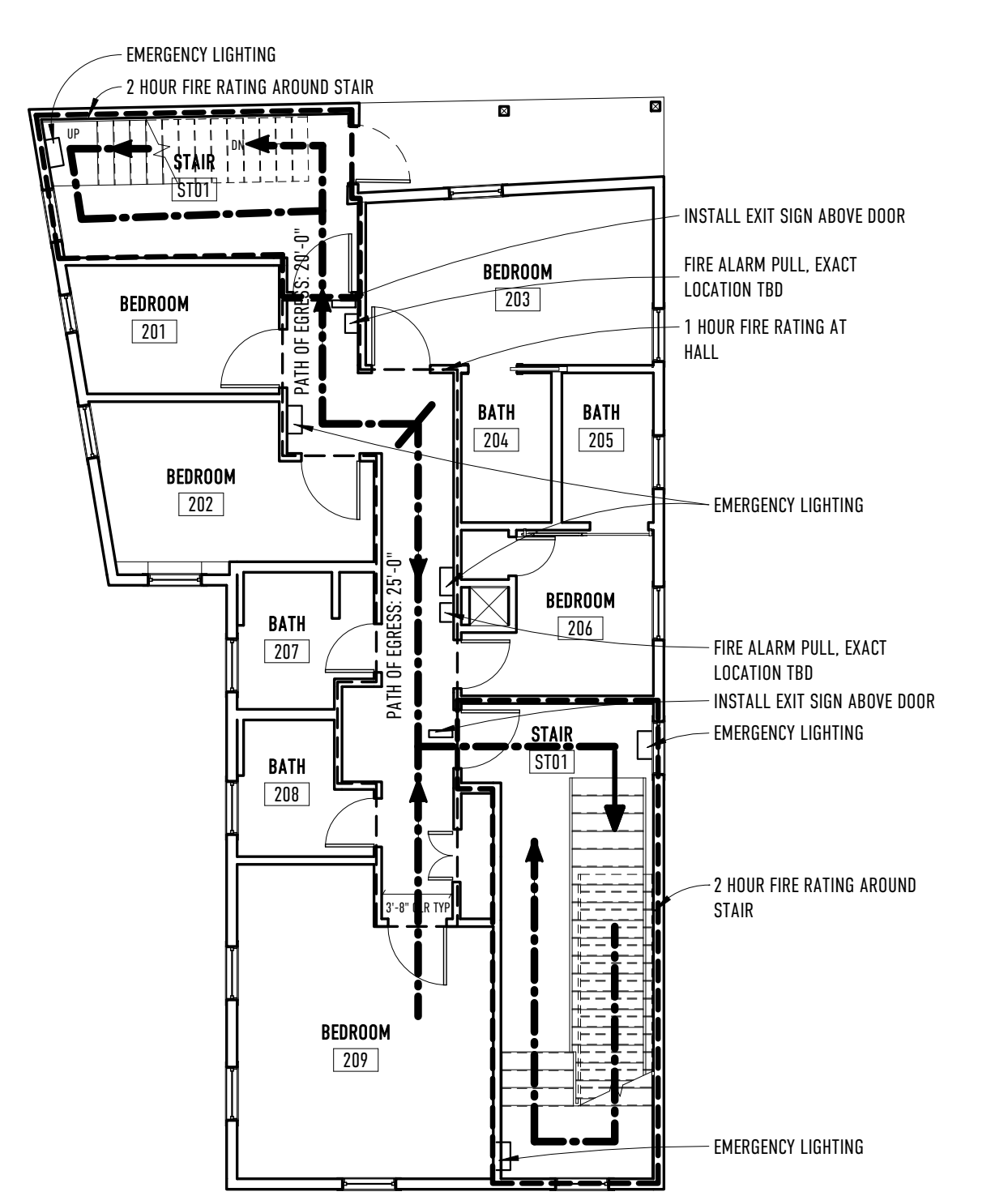


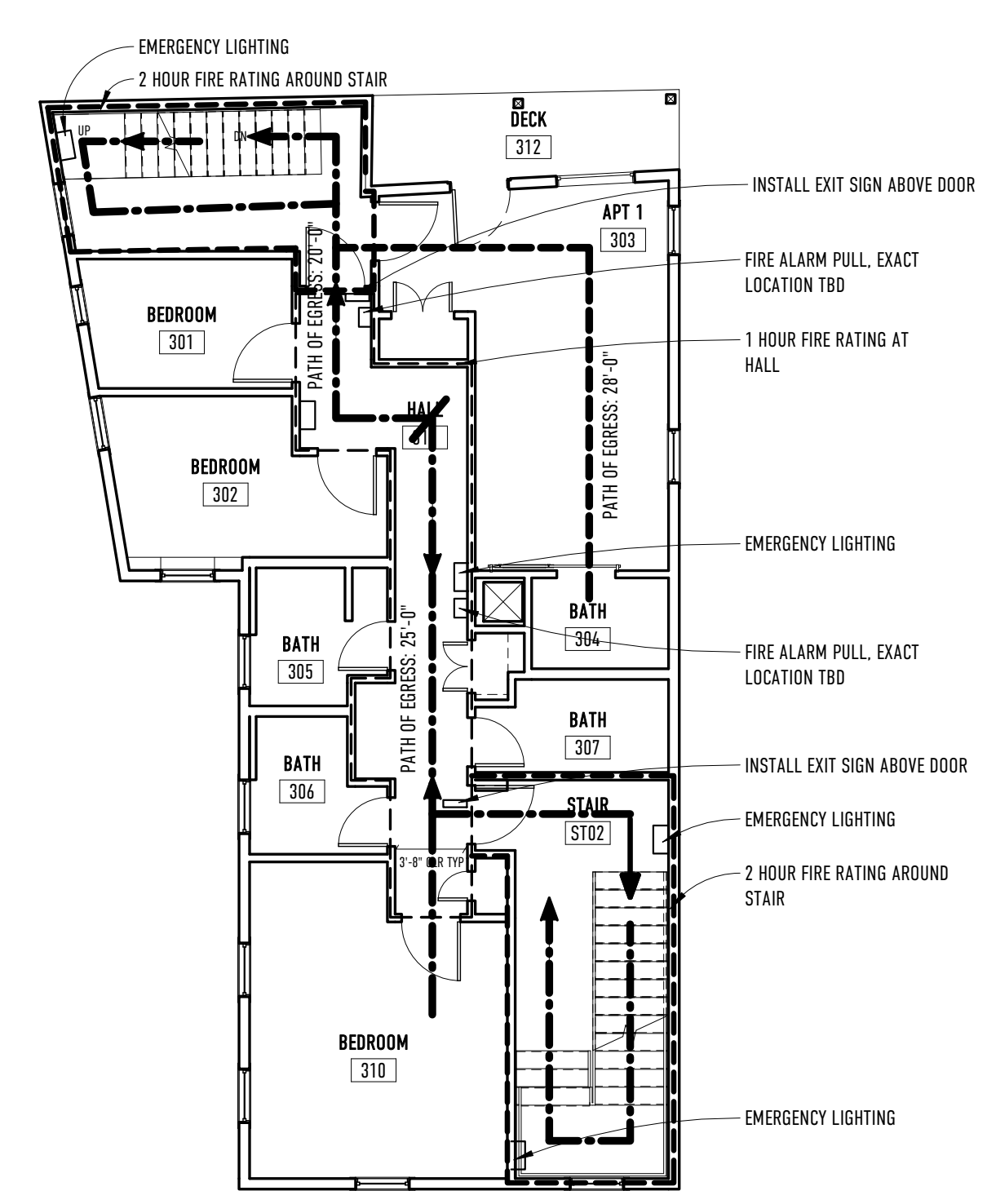
0 LIFE SAFETY PLAN- BASEMENT
1/8" = 1'-0"



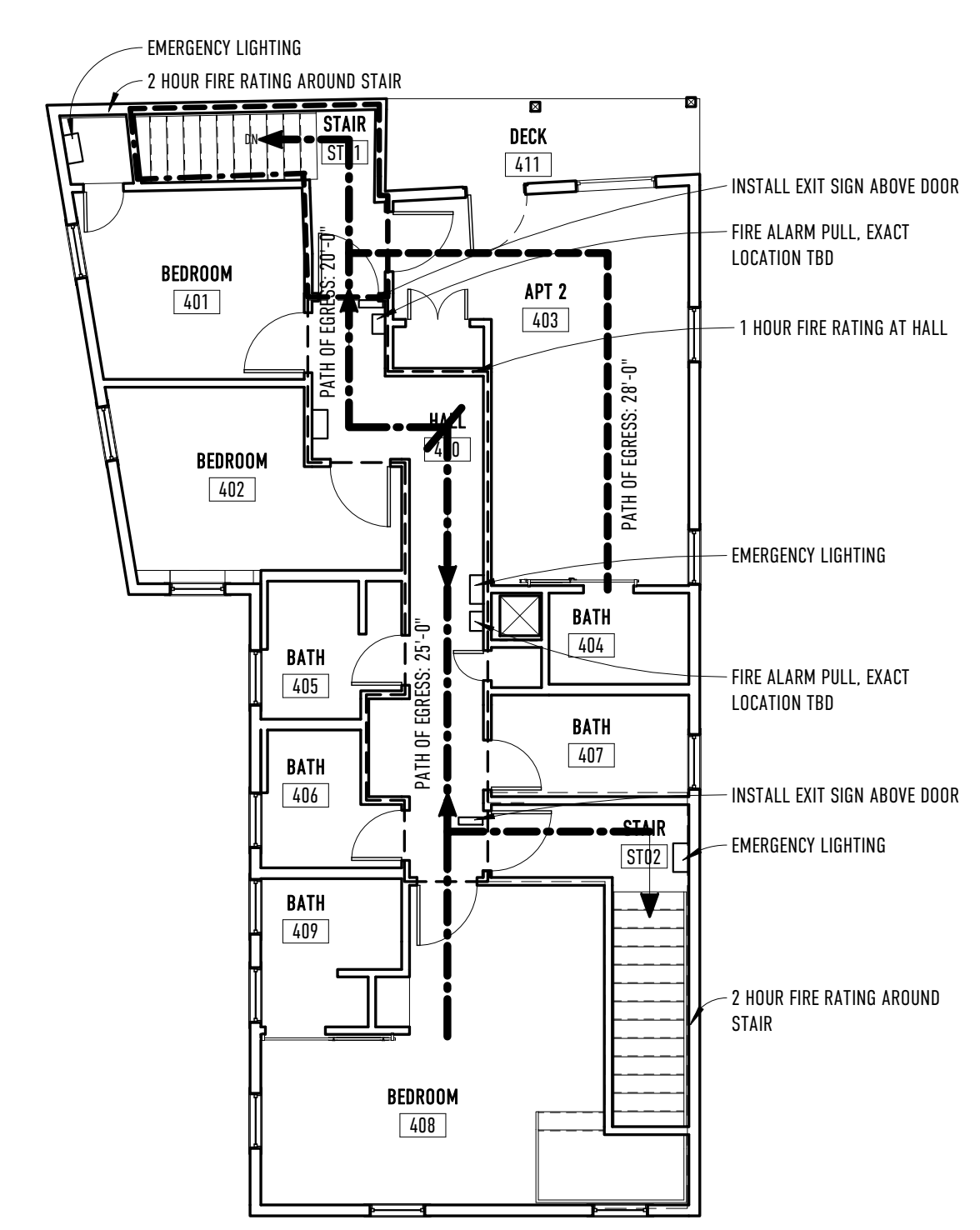
1 LIFE SAFETY PLAN- FIRST FLOOR
1/8" = 1'-0"



2 LIFE SAFETY PLAN- SECOND FLOOR
1/8" = 1'-0"



3 LIFE SAFETY PLAN- THIRD FLOOR
1/8" = 1'-0"



4 LIFE SAFETY PLAN- FOURTH FLOOR
1/8" = 1'-0"

OCCUPANCY CALCULATIONS AND REVIEW:

PER IBC 2009- OCCUPANCY CLASSIFICATION: 303 A, 310.4 R-2, 311 S-1

+/- 1,150 SF (AREA) / 300 SF NET (PP OCC S-1) = 3 PEOPLE

TOTAL OCCUPANT LOAD FOR BASEMENT FLOOR = 3 PEOPLE

OCCUPANCY CALCULATIONS AND REVIEW:

PER IBC 2015- OCCUPANCY CLASSIFICATION:
ASSEMBLY (303.1), AT FIRST FLOOR ENTRY/LOBBY
DORMITORY (310.4, R-2), AT ADA BED AND BATH
DORMITORY (310.4, R-2), AT ALL OTHER LEVELS (2ND, 3RD, 4TH FLOORS)

+/- 732 SF (AREA) / 15 SF NET (PP OCC ASSEMBLY) = 49 PEOPLE ACCESSORY TO R-2 OCCUPANCY

+/- 170 SF (AREA) / 50 SF (PP OCC DORMITORY) = 3 PEOPLE

TOTAL OCCUPANT LOAD FOR FIRST FLOOR = 52 PEOPLE

OCCUPANCY CALCULATIONS AND REVIEW:

PER IBC 2015- OCCUPANCY CLASSIFICATION:
DORMITORY (310.4, R-2), 2ND, 3RD, 4TH FLOORS

+/- 950 SF (AREA) / 50 SF (PP OCC DORMITORY) = 19 PEOPLE SECOND FLOOR

+/- 950 SF (AREA) / 50 SF (PP OCC DORMITORY) = 19 PEOPLE THIRD FLOOR

+/- 950 SF (AREA) / 50 SF (PP OCC DORMITORY) = 19 PEOPLE FOURTH FLOOR

TOTAL OCCUPANT LOAD FOR SECOND, THIRD AND FOURTH FLOOR = 57 PEOPLE

CODE SUMMARY:

APPLICABLE CODES:
INTERNATIONAL BUILDING CODE 2009 EDITION, NFPA 101 2009 EDITION

OCCUPANCY CLASSIFICATIONS: IBC SEC 303, 310, 311

ASSEMBLY
RESIDENTIAL R-1
MECHANICAL

AUTOMATIC SPRINKLER SYSTEM: NFPA 13
BUILDING PROVIDED WITH AUTOMATIC SPRINKLER SYSTEM THROUGHOUT

GENERAL BUILDING INFORMATION:

BASIC BUILDING INFORMATION:
TOTAL EXISTING BUILDING AREA = 1,208 SF
EXISTING BUILDING PERIMETER = 172'-10" FT

REQUIRED OCCUPANCY SEPARATIONS: IBC TABLE 508.4
A TO R-2 = 1 HOUR

OCCUPANCY LOAD: IBC TABLE 1004.1.1, NFPA

ASSEMBLY A: 15 SF NET/OCC
DORMITORIES: 50 SF GROSS/OCC
MECHANICAL: 300 SF/OCC

MEANS OF EGRESS: IBC CHAPTER 10

EGRESS WIDTH PER OCCUPANT: IBC 1005.1
0.3 INCHES PER OCCUPANT FOR STAIRWAYS
0.2 INCHES FOR OTHER EGRESS COMPONENTS

STAIRWAY WIDTH:
0.3 INCHES PER OCCUPANT FOR STAIRWAYS
44" (3'-8") MIN
0.2 INCHES FOR OTHER EGRESS COMPONENTS
MAX 52 OCC AT 0.3 INCH PER = 15.6 INCH

EXIT ACCESS:
COMMON PATH OF EGRESS TRAVEL: IBC 1014.3, IBC 1028.8
FOR ASSEMBLY < 30'

CORRIDOR FIRE RESISTANCE: IBC 1018.1
1 HOUR

CORRIDOR WIDTH: IBC 1018.2
NOT LESS THAN 44"

DEAD- END CORRIDOR: IBC 1018.24
DEAD END CORRIDORS IN AREAS OF WORK < 20'

PLUMBING FIXTURE COUNT: 2015 UPC TABLE 422.1
1 PER SLEEPING UNIT PROVIDED
1 @ ACCESSORY OCCUPANCY TO PRIMARY DORMITORY PROVIDED

NFPA REVIEW:

- PER NFPA 1: 6.1.8.1.4 - OCCUPANCY CLASSIFICATION: 311 S-1
- EXISTING FIRE ALARM SYSTEM TO BE UPDATED AND REWORKED TO MEET ALL NFPA 72 (2007) REQUIREMENTS THROUGHOUT WHOLE BUILDING.
- NEW SPRINKLER SYSTEM TO BE INSTALLED THROUGHOUT WHOLE BUILDING, TO MEET NFPA 13R (2016) REQUIREMENTS.
- PORTABLE FIRE EXTINGUISHERS TO BE LOCATED THROUGHOUT BUILDING PER NFPA 10 (2007) REQUIREMENTS.
- INSTALL EXIT SIGNS ABOVE ALL EXTERIOR DOORS AND CORRESPONDING SIGNAGE IN HALLWAYS.
- INSTALL EMERGENCY LIGHTING AT ALL HALLWAYS, AND EXIT AREAS PER NFPA.
- FIRE SEPARATION BETWEEN FIRST AND SECOND FLOOR AT FIRST FLOOR CEILING.
- STAIRWAYS TO BE ENCLOSED IN 2 HOUR FIRE SEPARATION.
- HALLWAYS TO BE ENCLOSED IN 1 HOUR FIRE RATED SEPARATION.

EXISTING CONDITIONS GENERAL NOTE:

- BACK STAIR ST01 TO REMAIN. EXISTING TREADS: 11" EXISTING RISERS: 8" WIDTH: 36" - ALL MEET EGRESS REQUIREMENTS PER NFPA TABLE 7.2.2.2.1.1 (B)
- FRONT STAIR ST02 TO BE DEMOLISHED IN ITS ENTIRETY AND REBUILT TO MEET ALL CODE REQUIREMENTS PER NFPA 7.2.2.2.1.1 (A) NEW STAIRS.
- ALL EXISTING WALLS TO REMAIN.
- EXISTING ROOF TO REMAIN.

REVISIONS:

33 HAMPSHIRE
LIFE SAFETY PLANS

A000

33 HAMPSHIRE ST. PORTLAND, MAINE 04101

DATE OF ISSUE: 12/12/2017

ISSUED FOR: PERMIT AMENDMENT

SCALE: As indicated

THIS DRAWING IS THE PROPERTY OF BARRETT MADE AND IS NOT TO BE REPRODUCED OR TRANSMITTED IN ANY FORM OR BY ANY MEANS, ELECTRONIC OR MECHANICAL, INCLUDING PHOTOCOPYING, RECORDING, OR BY ANY INFORMATION STORAGE AND RETRIEVAL SYSTEM, WITHOUT THE WRITTEN PERMISSION OF BARRETT MADE ARCHITECTS, PORTLAND, MAINE 04101. 2017.010.A02

BARRETT
MADE

HOUSES - SPACES - DETAILS