

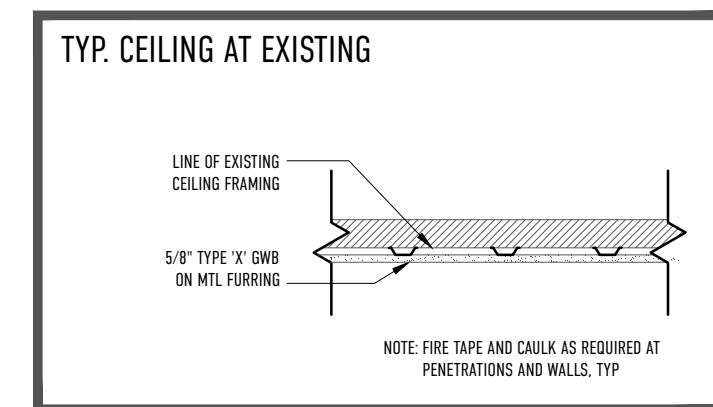
**PARTITION TYPES:**

<b>W4 01</b> UL#404 60 MIN	
<b>W4 02</b> UL-- --	
<b>W4 03</b> UL#334 120 MIN	

**GENERAL PARTITION NOTES:**

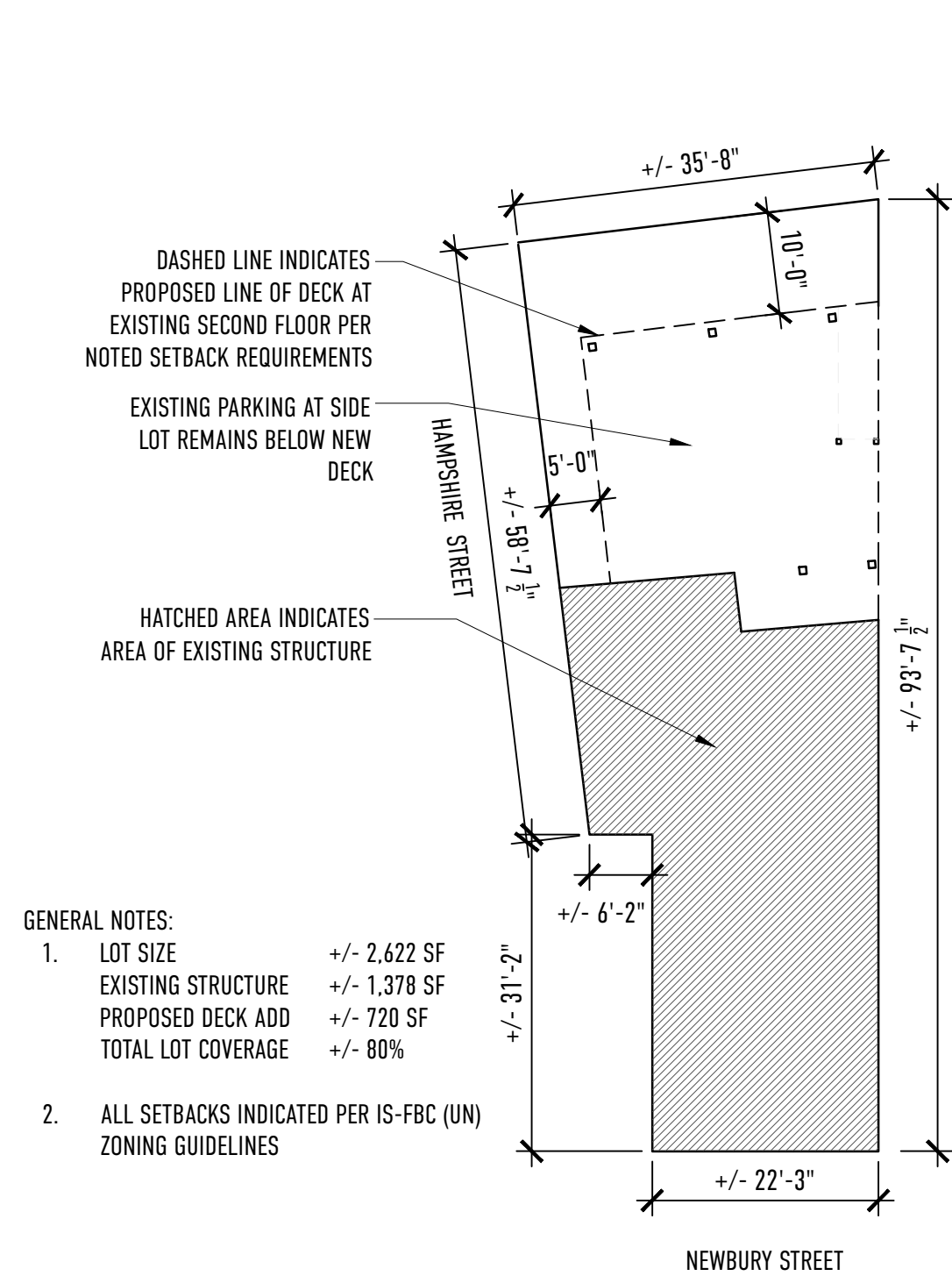
- REFER TO ROOM FINISH SCHEDULE FOR FINISH SURFACE TREATMENT AND CEILING HEIGHTS ASSOCIATED WITH PARTITIONS.
- PROVIDE WOOD BLOCKING BETWEEN ALL STUDS TO REINFORCE GWB WALLS AT THE FOLLOWING LOCATIONS:
  - A | BEHIND ALL DOORS RECEIVING WALL MOUNTED BUMPERS (DOORS INDICATED AS SWING AGAINST WALL).
  - B | AT ALL WALLS SCHEDULED TO RECEIVE WALL HUNG CABINETS, SHELVING, FIXTURES, ACCESSORY AND BASE CABINETS.
- STUD SPACING SHOWN ON PARTITION TYPES IS MINIMUM STANDARD.
- PROVIDE ACOUSTICAL SEALANT BENEATH ALL STUD RUNNERS AND AROUND ALL PENETRATIONS IN WALLS WITH SOUND BATTS.
- ALL BATHROOMS, JANITOR CLOSETS & KITCHENS TO HAVE 5/8" MOISTURE RESISTANT GWB/AND OR TILE BACKER BOARD.

**TYPICAL CEILING ASSEMBLY:**

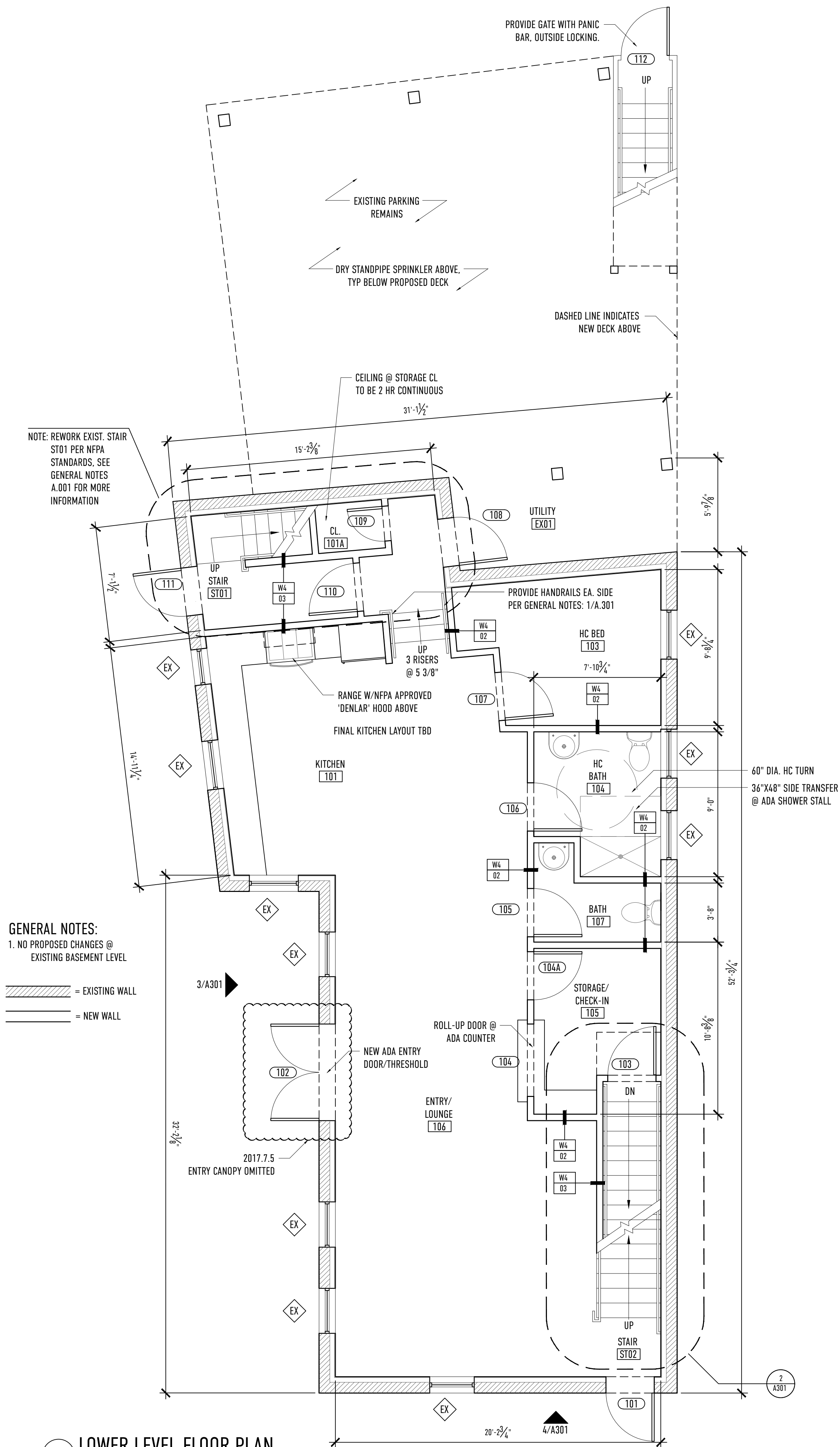


**GENERAL CEILING ASSEMBLY NOTES:**

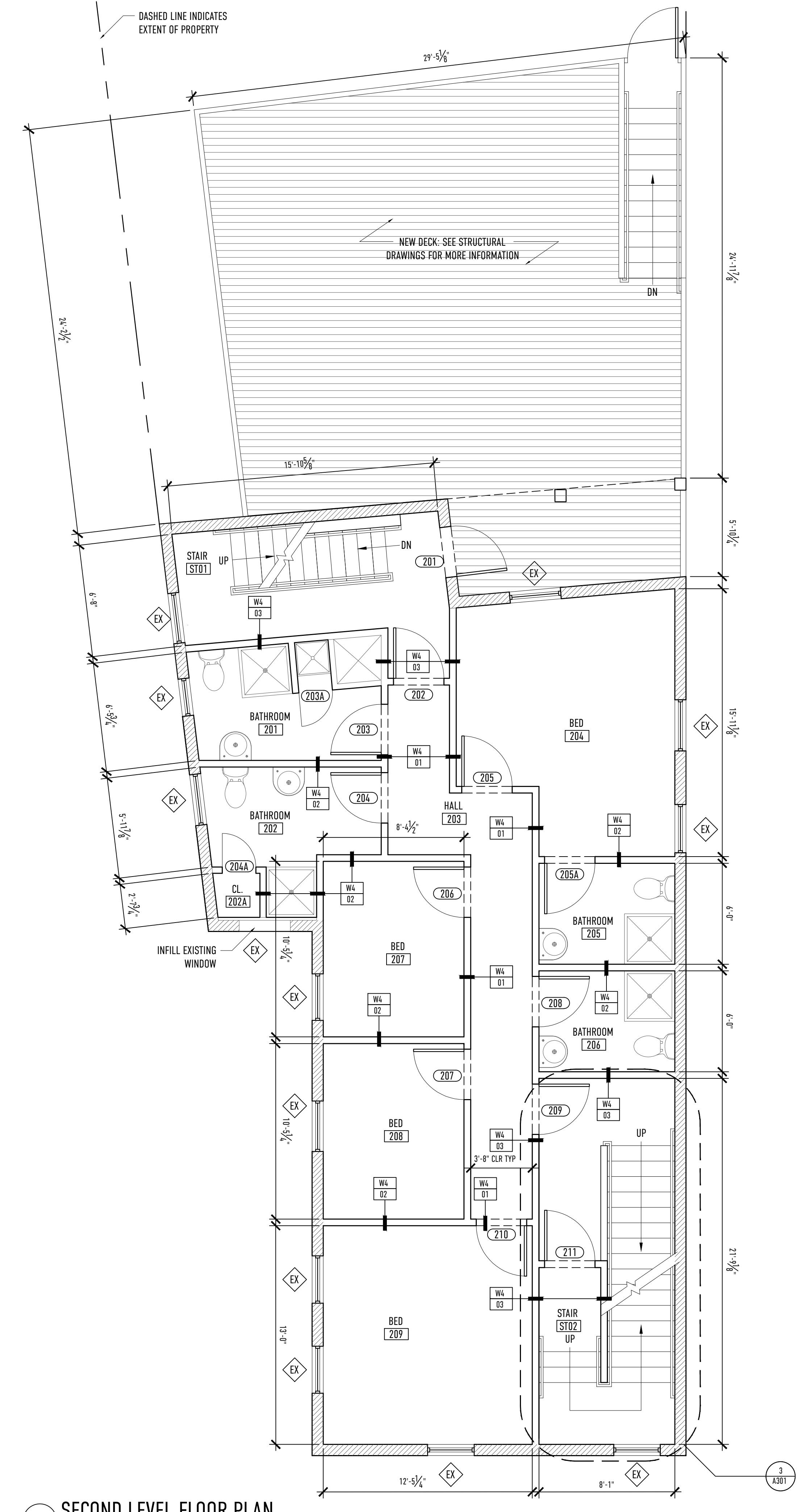
- ALL TYPICAL CEILING ASSEMBLIES TO PROVIDE 1 HR FIRE SEPARATION.



**3 PROPOSED LOT LAYOUT PLAN**  
1/16" = 1'-0"



**1 LOWER LEVEL FLOOR PLAN**  
1/4" = 1'-0"



**2 SECOND LEVEL FLOOR PLAN**  
1/4" = 1'-0"

**REVISIONS:**  
2017.7.5 | CANOPY REMOVED

**DRAWING TITLE:**  
**A.101**

**PROJECT NAME:**  
33 HAMPSHIRE STREET  
RENOVATIONS AND ALTERATIONS  
33 HAMPSHIRE STREET  
PORTLAND, MAINE 04101

**DATE OF ISSUE:**  
JUNE 7, 2017

**ISSUED FOR:**  
PERMIT SET

**SCALE:**  
AS NOTED

**THIS DRAWING IS THE PROPERTY OF BARRETT MADE AND IS NOT TO BE COPIED OR REPRODUCED IN PART OR WHOLE. 2017 © BARRETT MADE**

**BARRETT MADE**  
HOMES · SPACES · DETAILS