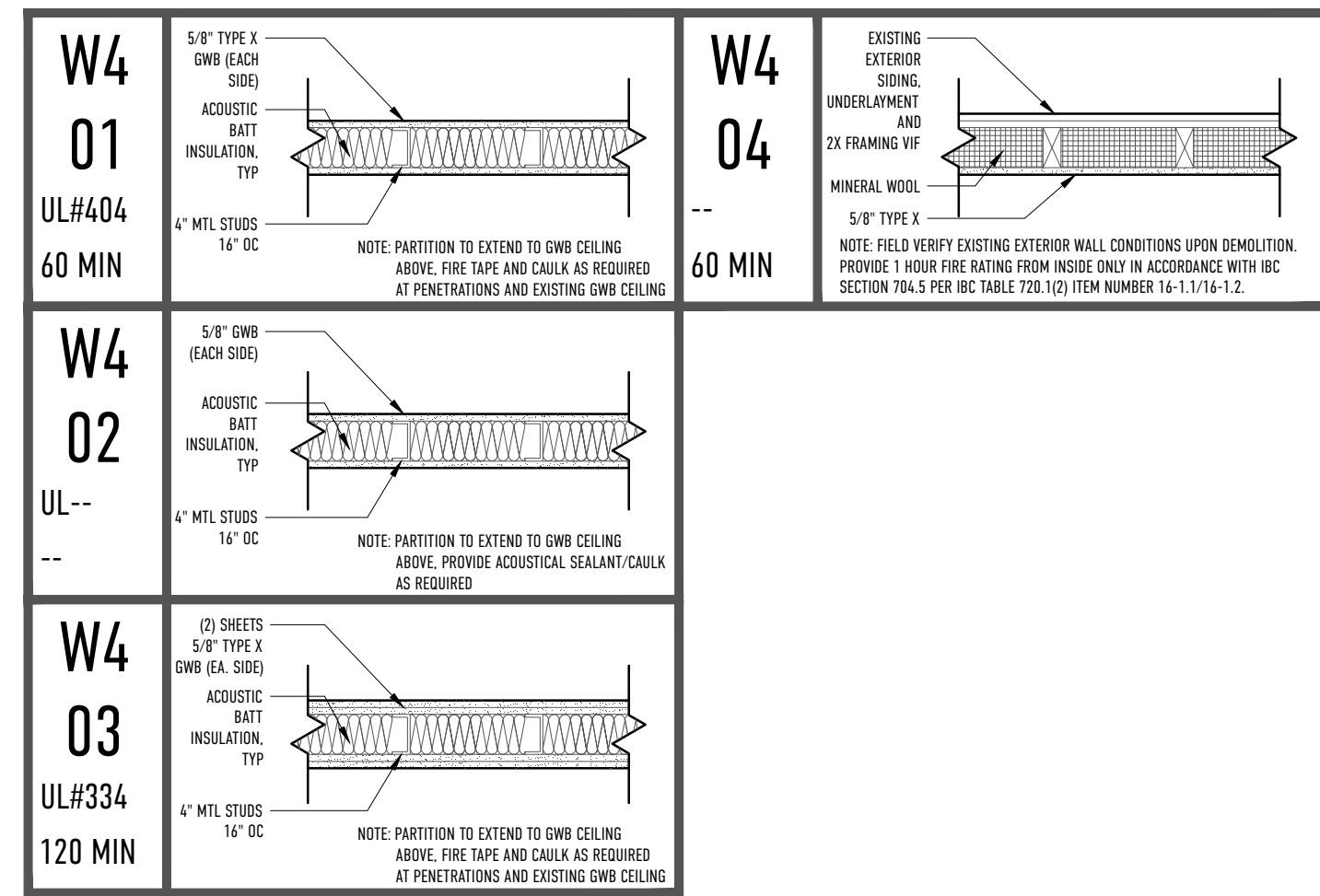


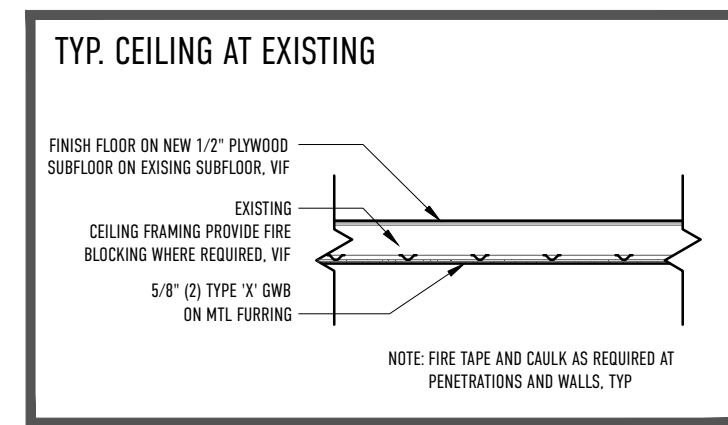
**PARTITION TYPES:**



**GENERAL PARTITION NOTES:**

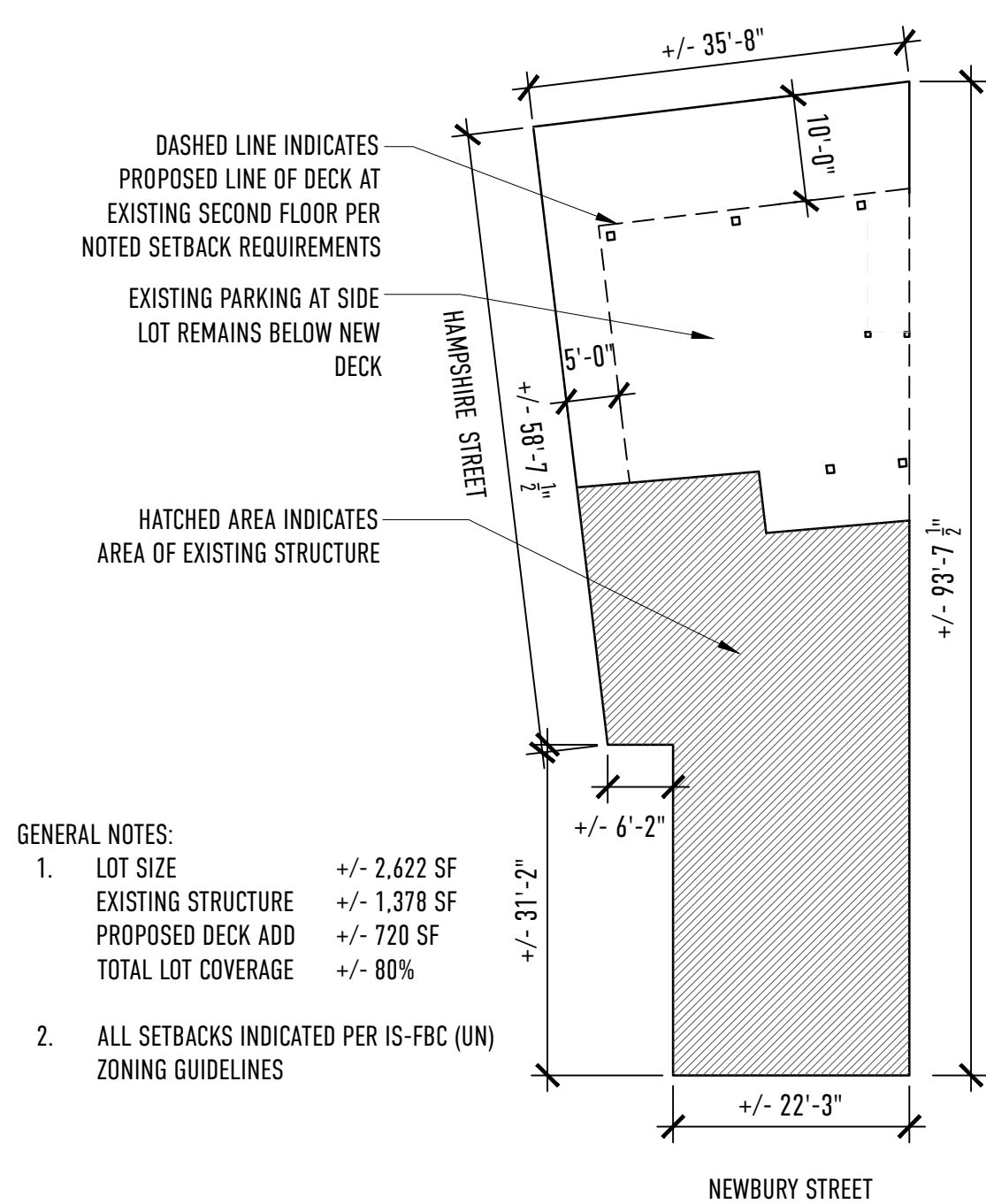
- REFER TO ROOM FINISH SCHEDULE FOR FINISH SURFACE TREATMENT AND CEILING HEIGHTS ASSOCIATED WITH PARTITIONS.
- PROVIDE WOOD BLOCKING BETWEEN ALL STUDS TO REINFORCE GWB WALLS AT THE FOLLOWING LOCATIONS:
  - A | BEHIND ALL DOORS RECEIVING WALL MOUNTED BUMPERS (DOORS INDICATED AS SWING AGAINST WALL).
  - B | AT ALL WALLS SCHEDULED TO RECEIVE WALL HUNG CABINETS, SHELVING, FIXTURES, ACCESSORY AND BASE CABINETS.
- STUD SPACING SHOWN ON PARTITION TYPES IS MINIMUM STANDARD.
- PROVIDE ACOUSTICAL SEALANT BENEATH ALL STUD RUNNERS AND AROUND ALL PENETRATIONS IN WALLS WITH SOUND BATTS.
- ALL BATHROOMS, JANITOR CLOSETS & KITCHENS TO HAVE 5/8" MOISTURE RESISTANT GWB/AND OR TILE BACKER BOARD.

**TYPICAL CEILING ASSEMBLY:**

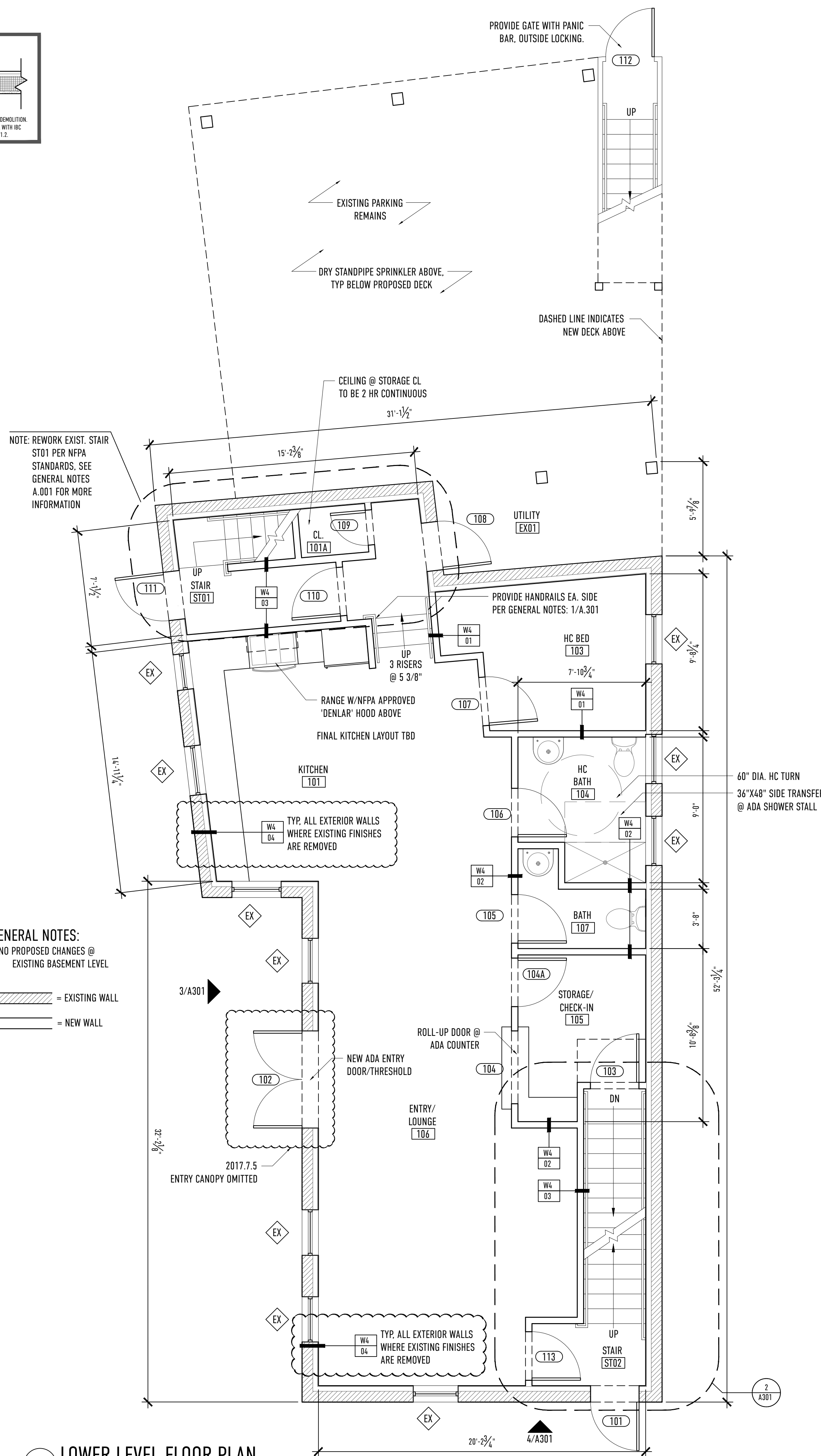


**GENERAL CEILING ASSEMBLY NOTES:**

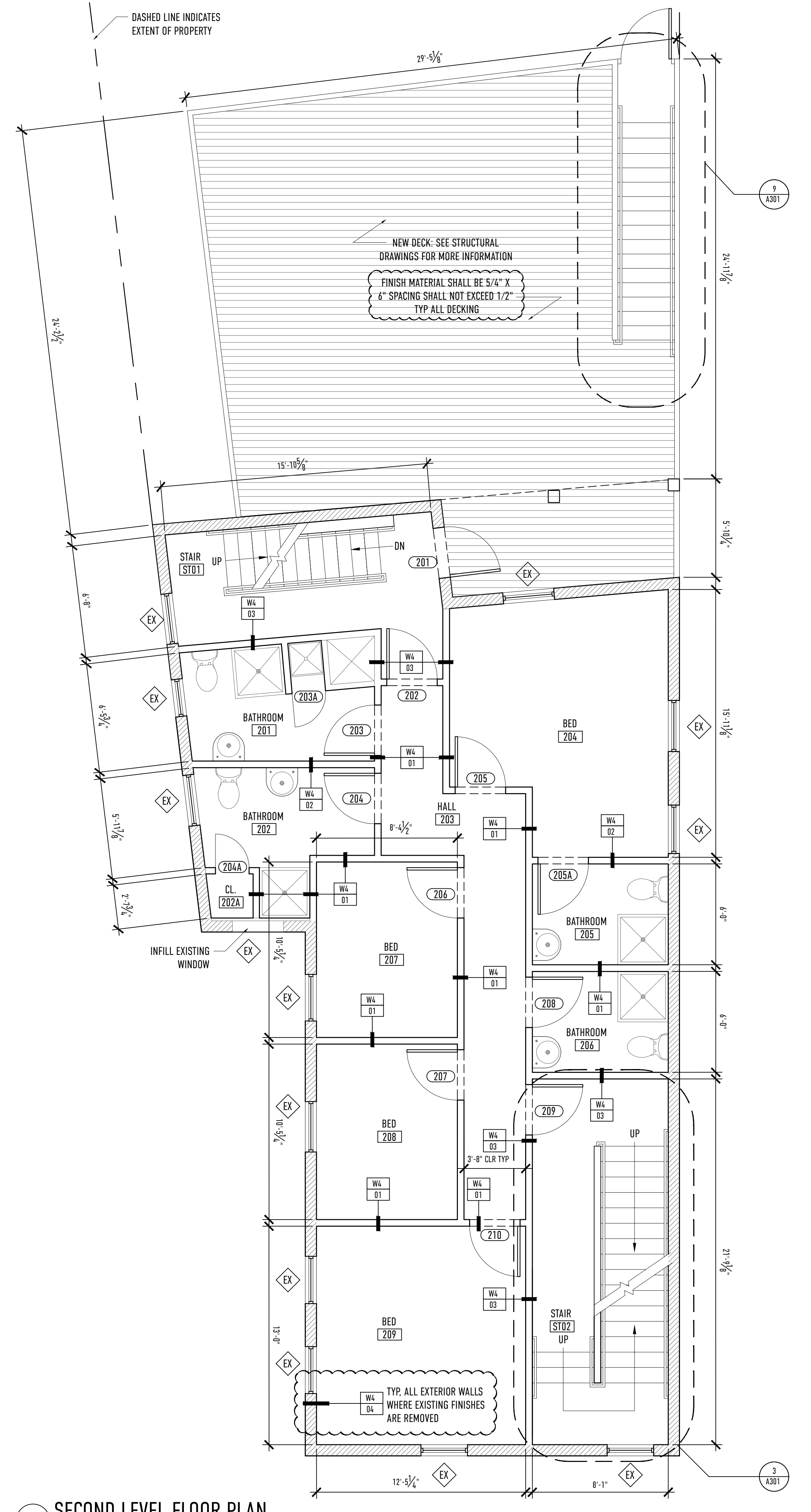
- ALL TYPICAL CEILING ASSEMBLIES TO PROVIDE 1 HR FIRE SEPARATION.



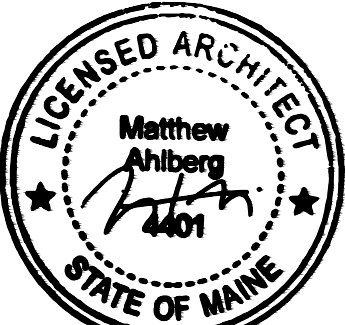
**3 PROPOSED LOT LAYOUT PLAN**  
1/16" = 1'-0"



**1 LOWER LEVEL FLOOR PLAN**  
1/4" = 1'-0"



**2 SECOND LEVEL FLOOR PLAN**  
1/4" = 1'-0"



REVISIONS:  
2017.8.28 | CODE REVIEW UPDATES  
2017.8.24 | CODE REVIEW UPDATES  
2017.7.5 | CANOPY REMOVED

33 HAMPSHIRE STREET  
FLOOR PLANS

A.101

PROJECT NAME:  
RENOVATIONS AND ALTERATIONS  
33 HAMPSHIRE STREET  
PORTLAND, MAINE 04101

DATE OF ISSUE:  
AUGUST 28, 2017

ISSUED FOR:  
PERMIT SET

SCALE:  
AS NOTED

**BARRETT  
MADE**  
HOMES - SPACES - DETAILS