

DOOR SCHEDULE - FIRST & SECOND FLOORS

MARK	LOCATION	DESCRIPTION	WIDTH	HEIGHT	THICK	DOOR		FRAME			HARDWARE	RATING	NOTES
						MATERIAL	TYPE	TYPE	HEAD	JAMB			
101	102	WD ENTRY PAIRED	3'-0"	7'-6"	1-3/4"	WD	D1	HM	F1	--	--	--	--
102	104	WD ENTRY PAIRED	3'-0"	7'-6"	1-3/4"	WD	D2	HM	F2	--	--	--	--
103	105	RATED MTL SWING	3'-0"	7'-6"	1-3/4"	MTL	D3	HM	F1	--	120 MIN	--	--
104	106	ROL UP	8'-6"	7'-6"	1-3/4"	WD	D4	WD	F3	--	--	--	--
104A	105	WD SWING	3'-0"	7'-6"	1-3/4"	WD	D5	WD	F4	--	--	--	--
105	104	WD SWING	3'-0"	7'-6"	1-3/4"	WD	D6	WD	F4	--	--	--	--
106	104	WD SWING	3'-0"	7'-6"	1-3/4"	WD	D7	WD	F4	--	--	--	--
107	103	WD SWING	3'-0"	7'-6"	1-3/4"	WD	D8	WD	F4	--	--	--	--
108	E201	WD ENTRY	3'-0"	7'-6"	1-3/4"	WD	D9	HM	F4	--	--	--	--
109	S101	WD SWING	3'-0"	7'-6"	1-3/4"	WD	D9	HM	F4	--	--	--	--
110	S101	RATED MTL SWING	3'-0"	7'-6"	1-3/4"	MTL	D3	HM	F1	--	120 MIN	--	--
111	E201	WD ENTRY	3'-0"	7'-6"	1-3/4"	WD	D9	HM	F4	--	--	--	--
112	E201	MTL GATE	3'-0"	7'-6"	1-3/4"	MTL	D11	MTL	F8	--	120 MIN	PANIC	--
201	S101	WD ENTRY	3'-0"	7'-6"	1-3/4"	WD	D5	HM	F4	--	--	--	--
202	201	RATED MTL SWING	3'-0"	7'-6"	1-3/4"	MTL	D3	HM	F1	--	120 MIN	--	--
203	201	WD SWING	3'-0"	7'-6"	1-3/4"	WD	D7	HM	F1	--	60 MIN	--	--
203A	201	WD SWING	7'-0"	7'-6"	1-3/4"	WD	D8	WD	F6	--	--	--	--
204	202	WD SWING	3'-0"	7'-6"	1-3/4"	WD	D7	HM	F1	--	60 MIN	--	--
204A	202	WD SWING	3'-0"	7'-6"	1-3/4"	WD	D8	WD	F6	--	--	--	--
205	204	WD SWING	3'-0"	7'-6"	1-3/4"	WD	D7	HM	F1	--	60 MIN	--	--
205A	204	WD SWING	3'-0"	7'-6"	1-3/4"	WD	D8	WD	F6	--	--	--	--
206	205	WD SWING	3'-0"	7'-6"	1-3/4"	WD	D7	HM	F1	--	60 MIN	--	--
207	206	WD SWING	3'-0"	7'-6"	1-3/4"	WD	D7	HM	F1	--	60 MIN	--	--
208	207	WD SWING	3'-0"	7'-6"	1-3/4"	WD	D7	HM	F1	--	60 MIN	--	--
209	S102	RATED MTL SWING	3'-0"	7'-6"	1-3/4"	MTL	D3	HM	F1	--	120 MIN	--	--
210	209	WD SWING	3'-0"	7'-6"	1-3/4"	WD	D7	HM	F1	--	60 MIN	--	--
211	S102	RATED MTL SWING	3'-0"	7'-6"	1-3/4"	MTL	D3	HM	F1	--	120 MIN	--	--

NOTES:
 1. GENERAL CONTRACTOR SHALL CONFIRM ALL JAMB DEPTH DIMENSIONS PRIOR TO PLACING THE DOOR ORDER.
 2. ALL GLASS TO BE TEMPERED AS REQUIRED BY CODE.
 3. ALL WINDOWS AND DOORS TO CONFORM WITH MUBEC REQUIREMENTS.

WINDOW SCHEDULE

TYPE	MANUF.	MODEL	OPERATION	FRAME SIZE		DETAILS			SCREEN	GLAZING	NOTES
				WIDTH	HEIGHT	JAMB	HEAD	JAMB			
											EXISTING TO REMAIN

NOTES:
 1. ALL EXISTING WINDOWS TO REMAIN UNLESS NOTED OTHERWISE.

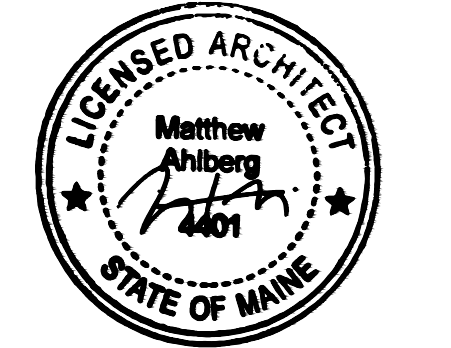
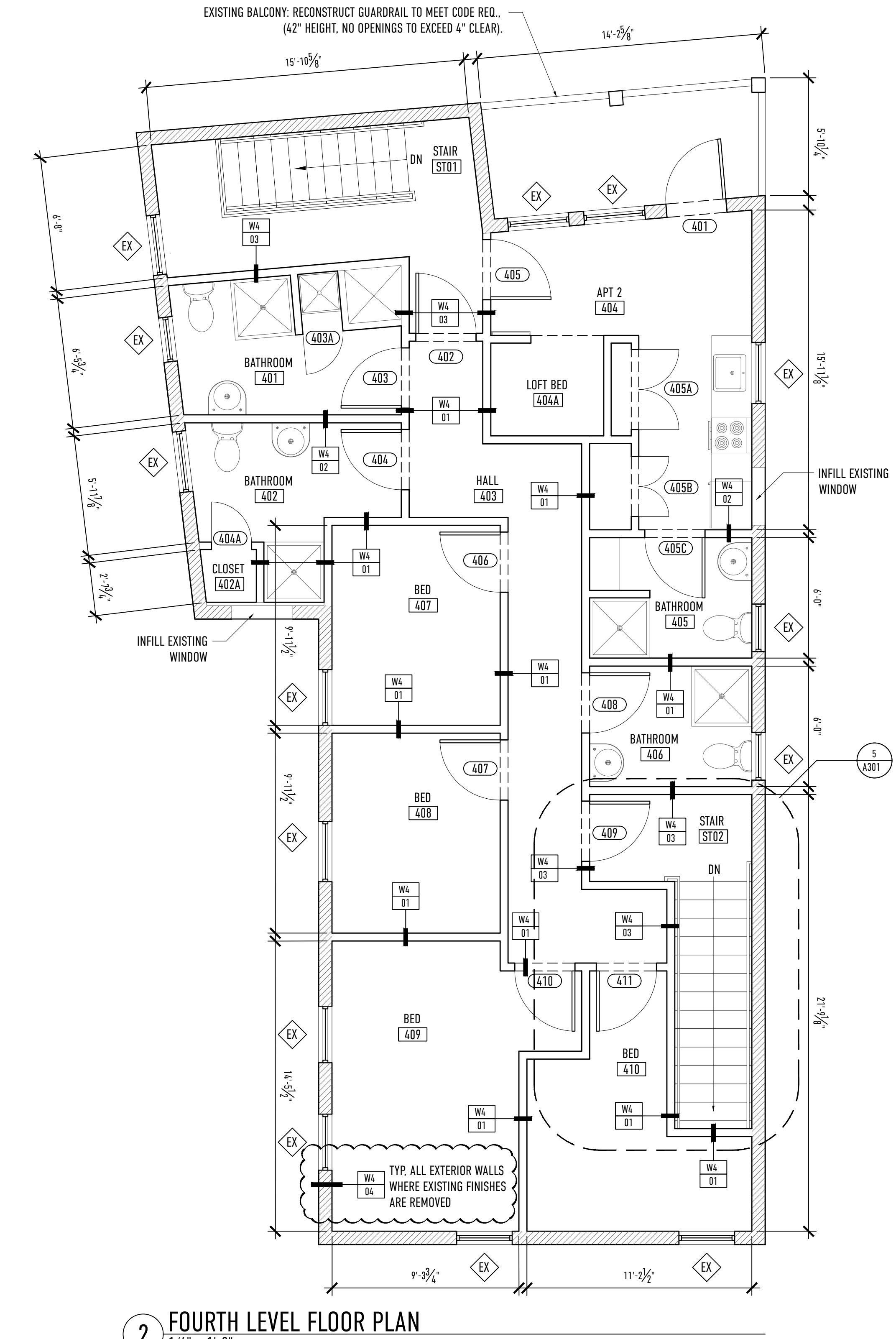
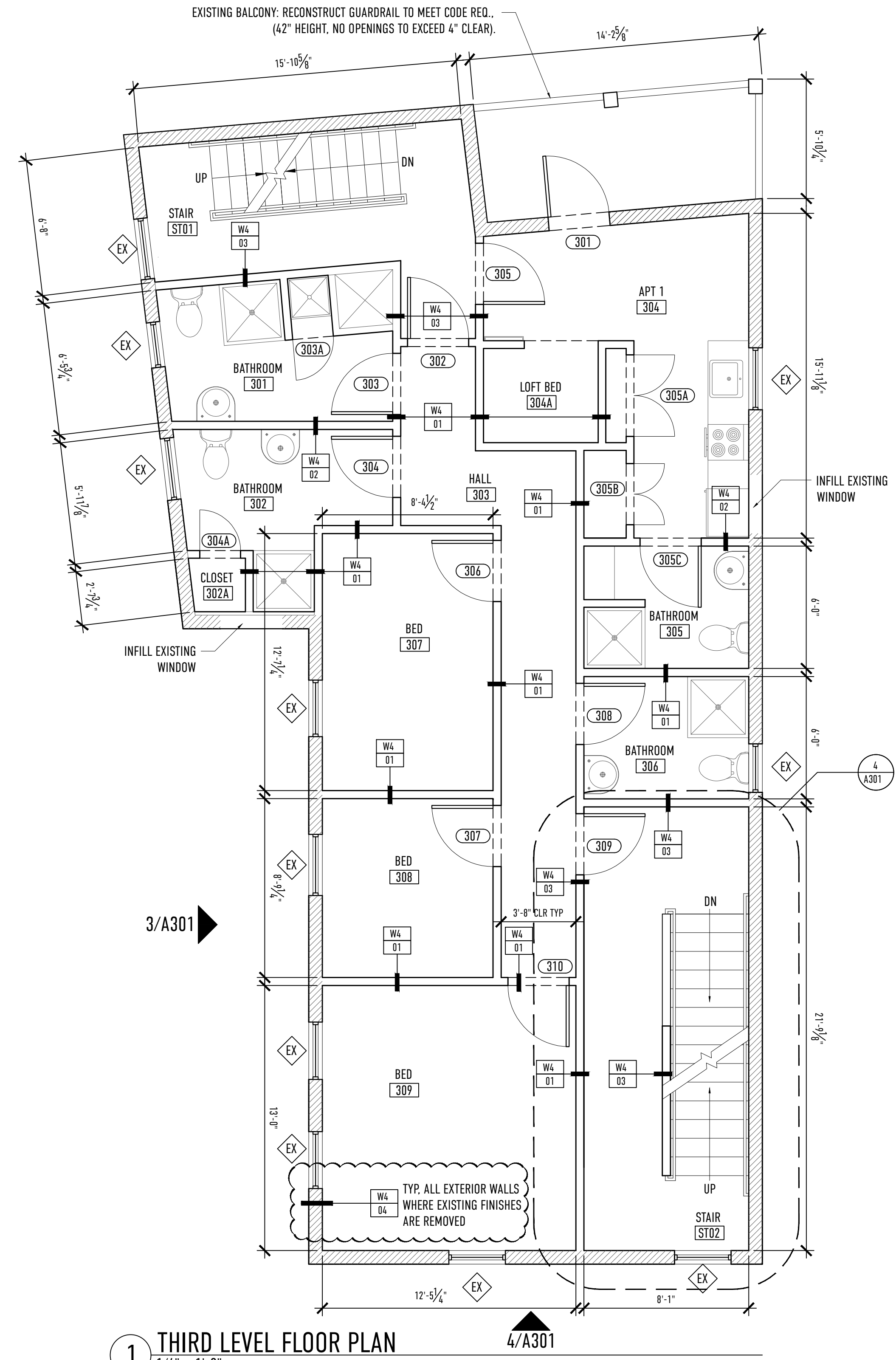
DOOR SCHEDULE - THIRD & FOURTH FLOORS

MARK	LOCATION	DESCRIPTION	WIDTH	HEIGHT	THICK	DOOR		FRAME			HARDWARE	RATING	NOTES
						MATERIAL	TYPE	TYPE	HEAD	JAMB			
301	302	WD ENTRY	3'-0"	7'-6"	1-3/4"	WD	D7	HM	F1	--	--	--	--
302	303	RATED MTL SWING	3'-0"	7'-6"	1-3/4"	MTL	D3	HM	F1	--	120 MIN	--	--
303	301	WD SWING	3'-0"	7'-6"	1-3/4"	WD	D7	HM	F1	--	60 MIN	--	--
304	301	WD SWING	3'-0"	7'-6"	1-3/4"	WD	D7	HM	F1	--	60 MIN	--	--
304A	302	WD SWING	3'-0"	7'-6"	1-3/4"	WD	D7	HM	F1	--	60 MIN	--	--
304B	302	WD SWING	3'-0"	7'-6"	1-3/4"	WD	D7	HM	F1	--	60 MIN	--	--
305	304	RATED MTL SWING	3'-0"	7'-6"	1-3/4"	MTL	D3	HM	F1	--	120 MIN	--	--
305A	304	WD SWING PAIRED	4'-0"	7'-6"	1-3/4"	WD	D9	WD	F7	--	--	--	--
305B	304	WD SWING PAIRED	3'-0"	7'-6"	1-3/4"	WD	D9	WD	F7	--	--	--	--
306	302	WD SWING	3'-0"	7'-6"	1-3/4"	WD	D7	HM	F1	--	60 MIN	--	--
307	302	WD SWING	3'-0"	7'-6"	1-3/4"	WD	D7	HM	F1	--	60 MIN	--	--
308	302	WD SWING	3'-0"	7'-6"	1-3/4"	WD	D7	HM	F1	--	60 MIN	--	--
309	ST02	RATED MTL SWING	3'-0"	7'-6"	1-3/4"	MTL	D3	HM	F1	--	120 MIN	--	--
401	402	WD ENTRY	3'-0"	7'-6"	1-3/4"	WD	D7	HM	F1	--	--	--	--
402	403	WD SWING	3'-0"	7'-6"	1-3/4"	WD	D7	HM	F1	--	120 MIN	--	--
403	401	WD SWING	3'-0"	7'-6"	1-3/4"	WD	D7	HM	F1	--	60 MIN	--	--
404	401	WD SWING	3'-0"	7'-6"	1-3/4"	WD	D7	HM	F1	--	60 MIN	--	--
404A	402	WD SWING	3'-0"	7'-6"	1-3/4"	WD	D7	HM	F1	--	60 MIN	--	--
404B	402	WD SWING	3'-0"	7'-6"	1-3/4"	WD	D7	HM	F1	--	60 MIN	--	--
405	404	WD SWING	3'-0"	7'-6"	1-3/4"	WD	D7	HM	F1	--	120 MIN	--	--
405A	404	WD SWING PAIRED	4'-0"	7'-6"	1-3/4"	WD	D9	WD	F7	--	--	--	--
405B	404	WD SWING PAIRED	3'-0"	7'-6"	1-3/4"	WD	D9	WD	F7	--	--	--	--
406	405	WD SWING	3'-0"	7'-6"	1-3/4"	WD	D7	HM	F1	--	60 MIN	--	--
407	405	WD SWING	3'-0"	7'-6"	1-3/4"	WD	D7	HM	F1	--	60 MIN	--	--
408	406	WD SWING	3'-0"	7'-6"	1-3/4"	WD	D7	HM	F1	--	60 MIN	--	--
409	ST02	RATED MTL SWING	3'-0"	7'-6"	1-3/4"	MTL	D3	HM	F1	--	120 MIN	--	--
410	409	WD SWING	3'-0"	7'-6"	1-3/4"	WD	D7	HM	F1	--	60 MIN	--	--

NOTES:
 1. GENERAL CONTRACTOR SHALL CONFIRM ALL JAMB DEPTH DIMENSIONS PRIOR TO PLACING THE DOOR ORDER.
 2. ALL GLASS TO BE TEMPERED AS REQUIRED BY CODE.
 3. ALL WINDOWS AND DOORS TO CONFORM WITH MUBEC REQUIREMENTS.

ADA PLUMBING FIXTURES

NOTES:
 1. REFER TO PLANS & ELEVATIONS FOR ACTUAL LAYOUT OF TOILET ROOMS AND QUANTITIES OF TOILET FIXTURES & ACCESSORIES.
 2. THIS DRAWING IS FOR PURPOSES OF LOCATION OF TYPICAL ITEMS IN ADA TOILET/SHOWER ROOMS. REFER TO OTHER DRAWINGS & SPECIFICATIONS FOR COMPLETE DESCRIPTION OF ITEMS REQUIRED. ALL REQUIRED ITEMS MAY NOT BE SHOWN.



REVISIONS:
 2017.8.24 | CODE REVIEW UPDATES
 2017.7.5 | CANOPY REMOVED

33 HAMPSHIRE STREET FLOOR PLANS

A.102

DATE OF ISSUE:
 AUGUST 24, 2017
 ISSUED FOR:
 PERMIT SET
 SCALE:
 AS NOTED

PROJECT NAME:
 RENOVATIONS AND ALTERATIONS
 33 HAMPSHIRE STREET
 PORTLAND, MAINE 04101