

DOOR SCHEDULE - FIRST & SECOND FLOORS

MARK	LOCATION	DESCRIPTION	DOOR			FRAME				HARDWARE	RATING	NOTES
			WIDTH	HEIGHT	THICK	MATERIAL	TYPE	MATERIAL	TYPE			
101	104	WD. ENTRY	3'-0"	7'-0"	1 3/4"	WD	D1	HM	F1	---	---	---
102	104	WD. ENTRY PAIRED	3'-0"	7'-0"	1 3/4"	WD	D2	HM	F2	---	---	---
103	105	RATED MTL SWING	3'-0"	7'-0"	1 3/4"	MTL	D3	HM	F1	---	120 MIN	---
104	105	ROLL UP	8'-4"	7'-0"	1 3/4"	WD	D4	WD	F3	---	---	---
104A	105	WD. SWING	3'-0"	7'-0"	1 3/4"	WD	D5	WD	F4	---	---	---
105	107	WD. SWING	3'-0"	7'-0"	1 3/4"	WD	D5	WD	F4	---	---	---
106	107	WD. SWING	3'-0"	7'-0"	1 3/4"	WD	D5	WD	F4	---	---	---
107	103	WD. SWING	3'-0"	7'-0"	1 3/4"	WD	D5	WD	F4	---	---	---
108	EX01	WD. ENTRY	3'-0"	7'-0"	1 3/4"	WD	D5	HM	F4	---	---	---
109	ST01	WD. SWING	2'-7"	7'-0"	1 3/4"	WD	D6	WD	F5	---	---	---
110	ST01	RATED MTL SWING	3'-0"	7'-0"	1 3/4"	MTL	D3	HM	F1	---	120 MIN	---
111	ST01	WD. ENTRY	3'-0"	7'-0"	1 3/4"	WD	D5	HM	F4	---	---	---
112	EX01	MTL GATE	3'-0"	7'-0"	1 3/4"	MTL	D11	MTL	F8	---	---	---
201	ST01	WD. ENTRY	3'-0"	7'-0"	1 3/4"	WD	D5	HM	F4	---	---	---
202	203	RATED MTL SWING	3'-0"	7'-0"	1 3/4"	MTL	D3	HM	F1	---	120 MIN	---
203	201	WD. SWING	3'-0"	7'-0"	1 3/4"	WD	D7	HM	F1	---	60 MIN	---
203A	201	WD. SWING	2'-0"	7'-0"	1 3/4"	WD	D8	WD	F4	---	---	---
204	202	WD. SWING	3'-0"	7'-0"	1 3/4"	WD	D7	HM	F1	---	60 MIN	---
204A	202	WD. SWING	2'-0"	7'-0"	1 3/4"	WD	D8	WD	F4	---	---	---
205	204	WD. SWING	3'-0"	7'-0"	1 3/4"	WD	D7	HM	F1	---	60 MIN	---
205A	204	WD. SWING	3'-0"	7'-0"	1 3/4"	WD	D5	WD	F4	---	---	---
206	207	WD. SWING	3'-0"	7'-0"	1 3/4"	WD	D7	HM	F1	---	60 MIN	---
207	208	WD. SWING	3'-0"	7'-0"	1 3/4"	WD	D7	HM	F1	---	60 MIN	---
208	206	WD. SWING	3'-0"	7'-0"	1 3/4"	WD	D7	HM	F1	---	60 MIN	---
209	ST02	RATED MTL SWING	3'-0"	7'-0"	1 3/4"	MTL	D3	HM	F1	---	120 MIN	---
210	207	WD. SWING	3'-0"	7'-0"	1 3/4"	WD	D7	HM	F1	---	60 MIN	---
211	ST02	RATED MTL SWING	3'-0"	7'-0"	1 3/4"	MTL	D3	HM	F1	---	120 MIN	---

NOTES:
 1. GENERAL CONTRACTOR SHALL CONFIRM ALL JAMB DEPTH DIMENSIONS PRIOR TO PLACING THE DOOR ORDER.
 2. ALL GLASS TO BE TEMPERED AS REQUIRED BY CODE.
 3. ALL WINDOWS AND DOORS TO CONFORM WITH MUBEC REQUIREMENTS.

WINDOW SCHEDULE

TYPE	MANUF.	MODEL	OPERATION	FRAME SIZE		DETAILS			SCREEN	GLAZING	NOTES
				WIDTH	HEIGHT	JAMB	HEAD	JAMB			
EX											EXISTING TO REMAIN

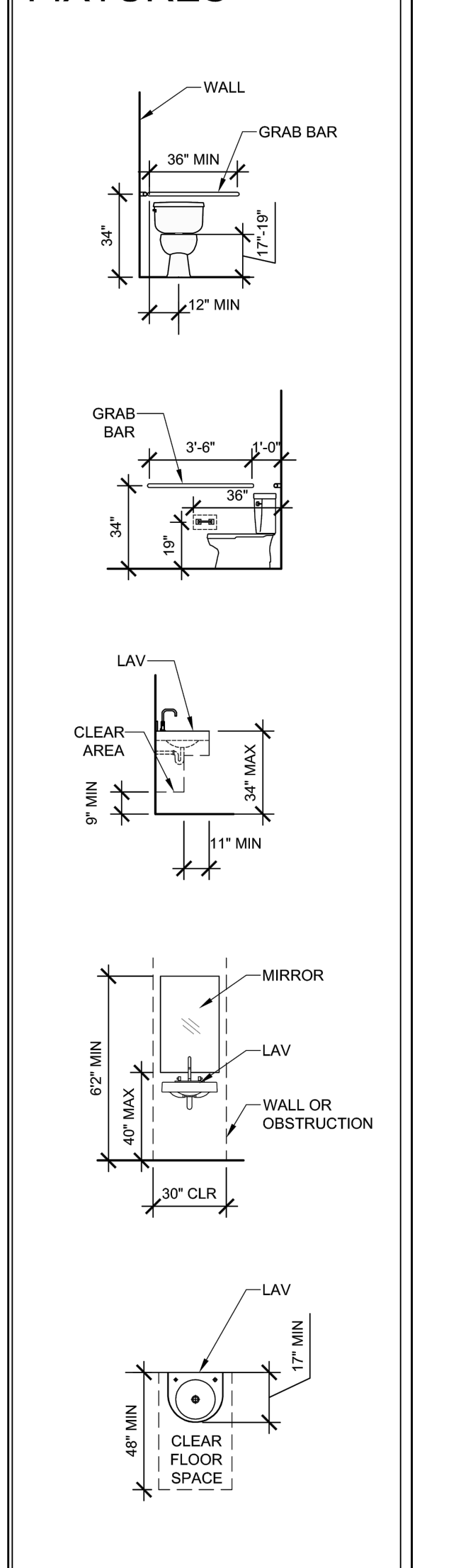
NOTES:
 1. ALL EXISTING WINDOWS TO REMAIN UNLESS NOTED OTHERWISE.

DOOR SCHEDULE - THIRD & FOURTH FLOORS

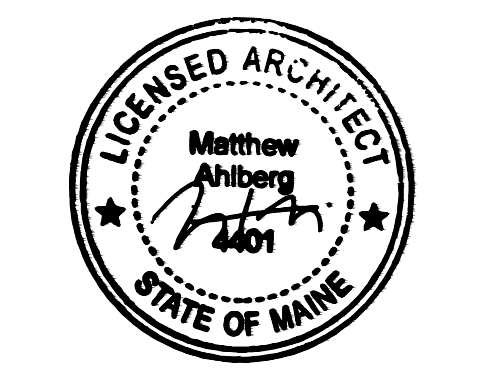
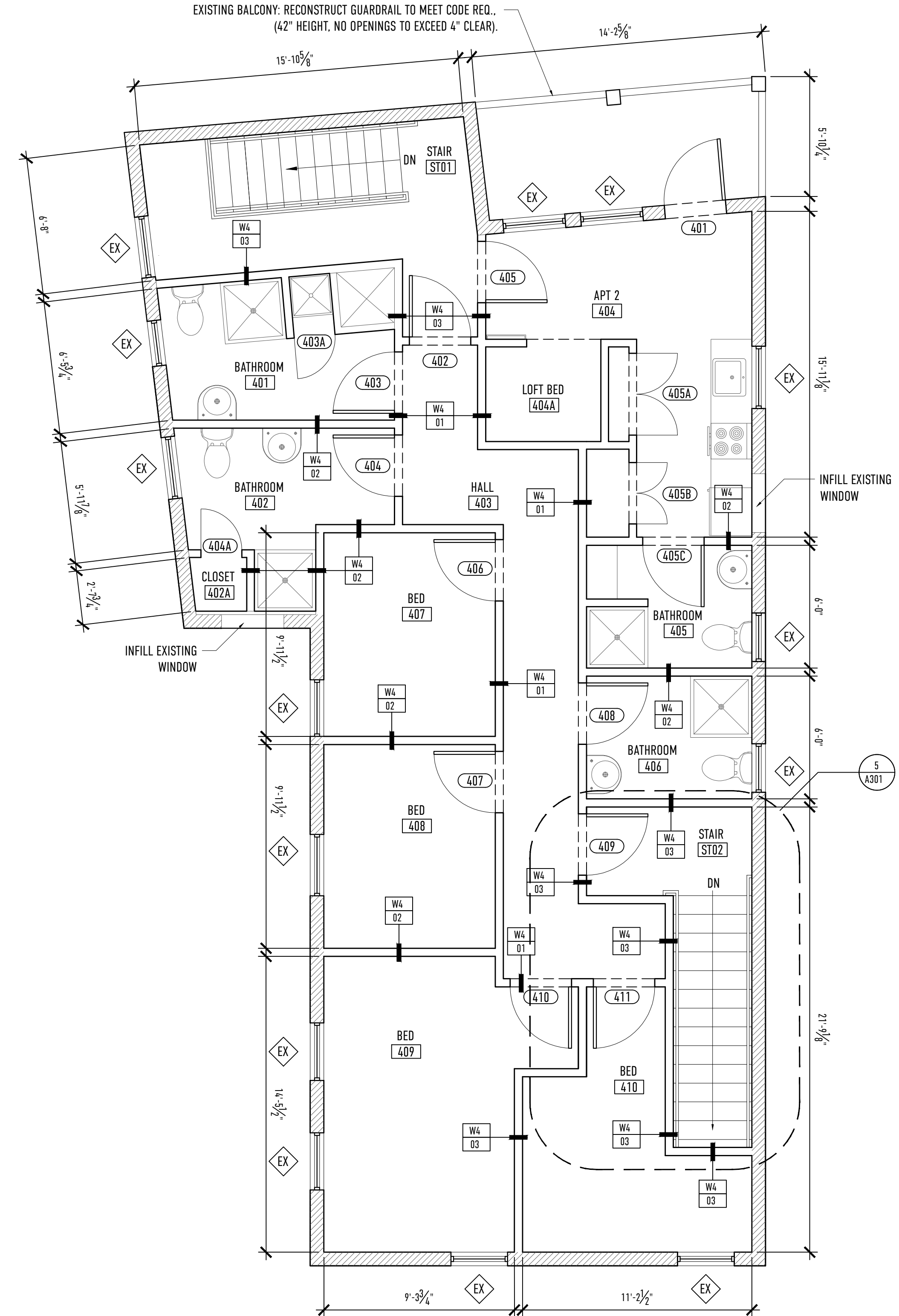
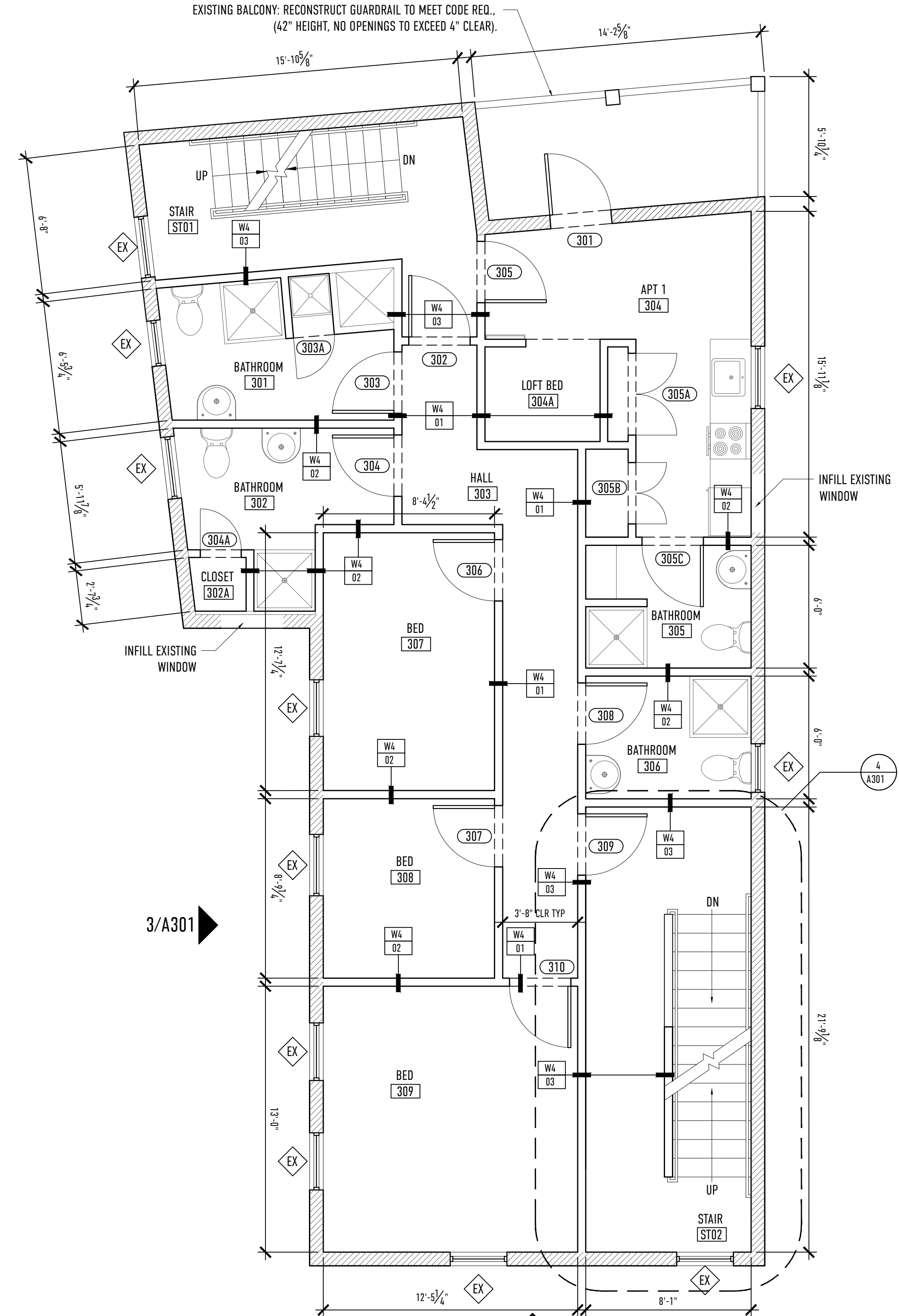
MARK	LOCATION	DESCRIPTION	DOOR			FRAME				HARDWARE	RATING	NOTES
			WIDTH	HEIGHT	THICK	MATERIAL	TYPE	MATERIAL	TYPE			
301	304	WD. ENTRY	3'-0"	7'-0"	1 3/4"	WD	D7	HM	F1	---	---	---
302	304	RATED MTL SWING	3'-0"	7'-0"	1 3/4"	MTL	D3	HM	F1	---	120 MIN	---
303	301	WD. SWING	3'-0"	7'-0"	1 3/4"	WD	D7	HM	F1	---	60 MIN	---
303A	301	WD. SWING	2'-0"	7'-0"	1 3/4"	WD	D8	WD	F4	---	---	---
304	302	WD. SWING	3'-0"	7'-0"	1 3/4"	WD	D7	HM	F1	---	60 MIN	---
304A	302	WD. SWING	2'-0"	7'-0"	1 3/4"	WD	D8	WD	F4	---	---	---
305	304	RATED MTL SWING	3'-0"	7'-0"	1 3/4"	MTL	D3	HM	F1	---	120 MIN	---
305A	304	WD. SWING PAIRED	4'-0"	7'-0"	1 3/4"	WD	D9	WD	F7	---	---	---
305B	304	WD. SWING PAIRED	3'-0"	7'-0"	1 3/4"	WD	D10	WD	F4	---	---	---
305C	304	WD. SWING	3'-0"	7'-0"	1 3/4"	WD	D5	WD	F4	---	---	---
306	307	WD. SWING	3'-0"	7'-0"	1 3/4"	WD	D7	HM	F1	---	60 MIN	---
307	308	WD. SWING	3'-0"	7'-0"	1 3/4"	WD	D7	HM	F1	---	60 MIN	---
308	304	WD. SWING	3'-0"	7'-0"	1 3/4"	WD	D7	HM	F1	---	60 MIN	---
309	ST02	RATED MTL SWING	3'-0"	7'-0"	1 3/4"	MTL	D3	HM	F1	---	120 MIN	---
310	309	WD. SWING	3'-0"	7'-0"	1 3/4"	WD	D7	HM	F1	---	60 MIN	---
401	404	WD. ENTRY	3'-0"	7'-0"	1 3/4"	WD	D7	HM	F1	---	---	---
402	403	WD. SWING	3'-0"	7'-0"	1 3/4"	WD	D7	HM	F1	---	120 MIN	---
403	401	WD. SWING	3'-0"	7'-0"	1 3/4"	WD	D7	HM	F1	---	60 MIN	---
403A	401	WD. SWING	2'-0"	7'-0"	1 3/4"	WD	D8	WD	F4	---	---	---
404	402	WD. SWING	3'-0"	7'-0"	1 3/4"	WD	D7	HM	F1	---	60 MIN	---
404A	402	WD. SWING	2'-0"	7'-0"	1 3/4"	WD	D8	WD	F4	---	---	---
405	404	WD. SWING	3'-0"	7'-0"	1 3/4"	WD	D7	HM	F1	---	60 MIN	---
405A	404	WD. SWING PAIRED	4'-0"	7'-0"	1 3/4"	WD	D9	WD	F7	---	---	---
405B	404	WD. SWING PAIRED	3'-0"	7'-0"	1 3/4"	WD	D10	WD	F4	---	---	---
406	405	WD. SWING	3'-0"	7'-0"	1 3/4"	WD	D7	HM	F1	---	120 MIN	---
406A	405	WD. SWING	3'-0"	7'-0"	1 3/4"	WD	D5	WD	F4	---	---	---
407	408	WD. SWING	3'-0"	7'-0"	1 3/4"	WD	D7	HM	F1	---	60 MIN	---
408	406	WD. SWING	3'-0"	7'-0"	1 3/4"	WD	D7	HM	F1	---	60 MIN	---
409	ST02	WD. SWING	3'-0"	7'-0"	1 3/4"	WD	D7	HM	F1	---	120 MIN	---
410	409	WD. SWING	3'-0"	7'-0"	1 3/4"	WD	D7	HM	F1	---	60 MIN	---

NOTES:
 1. GENERAL CONTRACTOR SHALL CONFIRM ALL JAMB DEPTH DIMENSIONS PRIOR TO PLACING THE DOOR ORDER.
 2. ALL GLASS TO BE TEMPERED AS REQUIRED BY CODE.
 3. ALL WINDOWS AND DOORS TO CONFORM WITH MUBEC REQUIREMENTS.

ADA PLUMBING FIXTURES



NOTES:
 1. REFER TO PLANS & ELEVATIONS FOR ACTUAL LAYOUT OF TOILET ROOMS AND QUANTITIES OF TOILET FIXTURES & ACCESSORIES.
 2. THIS DRAWING IS FOR PURPOSES OF LOCATION OF TYPICAL ITEMS IN ADA TOILET/SHOWER ROOMS. REFER TO OTHER DRAWINGS & SPECIFICATIONS FOR COMPLETE DESCRIPTION OF ITEMS REQUIRED. ALL REQUIRED ITEMS MAY NOT BE SHOWN.



REVISIONS:

33 HAMPSHIRE STREET FLOOR PLANS

A.102

DATE OF ISSUE: AUGUST 14, 2017
 PERMITTED FOR: PERMIT SET
 SCALE: AS NOTED

PROJECT NAME: RENOVATIONS AND ALTERATIONS
 33 HAMPSHIRE STREET
 PORTLAND, MAINE 04101

