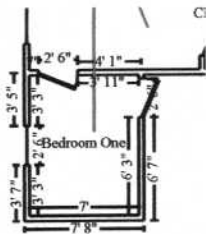


**SVM Elite**

14 Willey Rd.  
 Saco, ME 04072  
 Office: 207.283.0501 I 800.338.5311  
 Fax: 207.286.9221

**CONTINUED - Kitchen**

DESCRIPTION	QTY	UNIT PRICE	TAX	RCV	DEPREC.	ACV
<b>Totals: Kitchen</b>			<b>10.05</b>	<b>616.93</b>	<b>0.00</b>	<b>616.93</b>



**Bedroom One**

**Height: 9'**

244.67 SF Walls	63.00 SF Ceiling
307.67 SF Walls & Ceiling	63.00 SF Floor
7.00 SY Flooring	27.00 LF Floor Perimeter
32.00 LF Ceil. Perimeter	

<b>Window</b>	<b>2' 6" X 4'</b>	<b>Opens into Exterior</b>
<b>Door</b>	<b>2' 6" X 6' 8"</b>	<b>Opens into Exterior</b>
<b>Door</b>	<b>2' 6" X 6' 8"</b>	<b>Opens into BEDROOM_TWO</b>

DESCRIPTION	QTY	UNIT PRICE	TAX	RCV	DEPREC.	ACV
<b>DWELLING</b>						
105. Seal/prime then paint the walls and ceiling (2 coats)	307.67 SF	0.88	2.54	273.29	(0.00)	273.29
120. Paint door/window trim & jamb - 2 coats (per side)	3.00 EA	31.52	0.63	95.19	(0.00)	95.19
121. Paint baseboard - two coats	27.00 LF	1.34	0.16	36.34	(0.00)	36.34
125. Content Manipulation charge - per hour	6.00 HR	29.46	0.00	176.76	(0.00)	176.76
<b>Dwelling Totals:</b>			<b>3.33</b>	<b>581.58</b>		<b>581.58</b>
<b>Totals: Bedroom One</b>			<b>3.33</b>	<b>581.58</b>	<b>0.00</b>	<b>581.58</b>