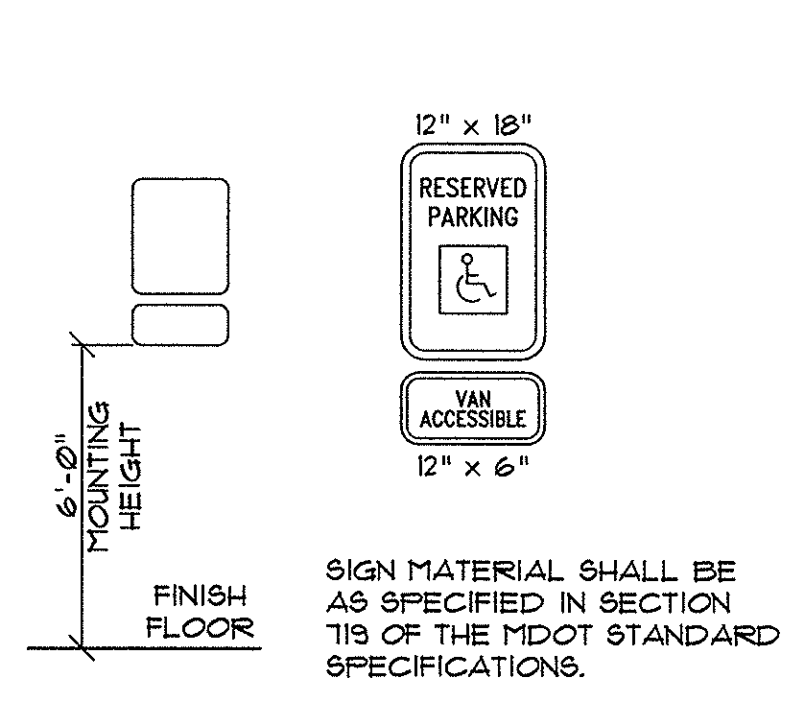


2 STRIPING DETAILS

NOT TO SCALE

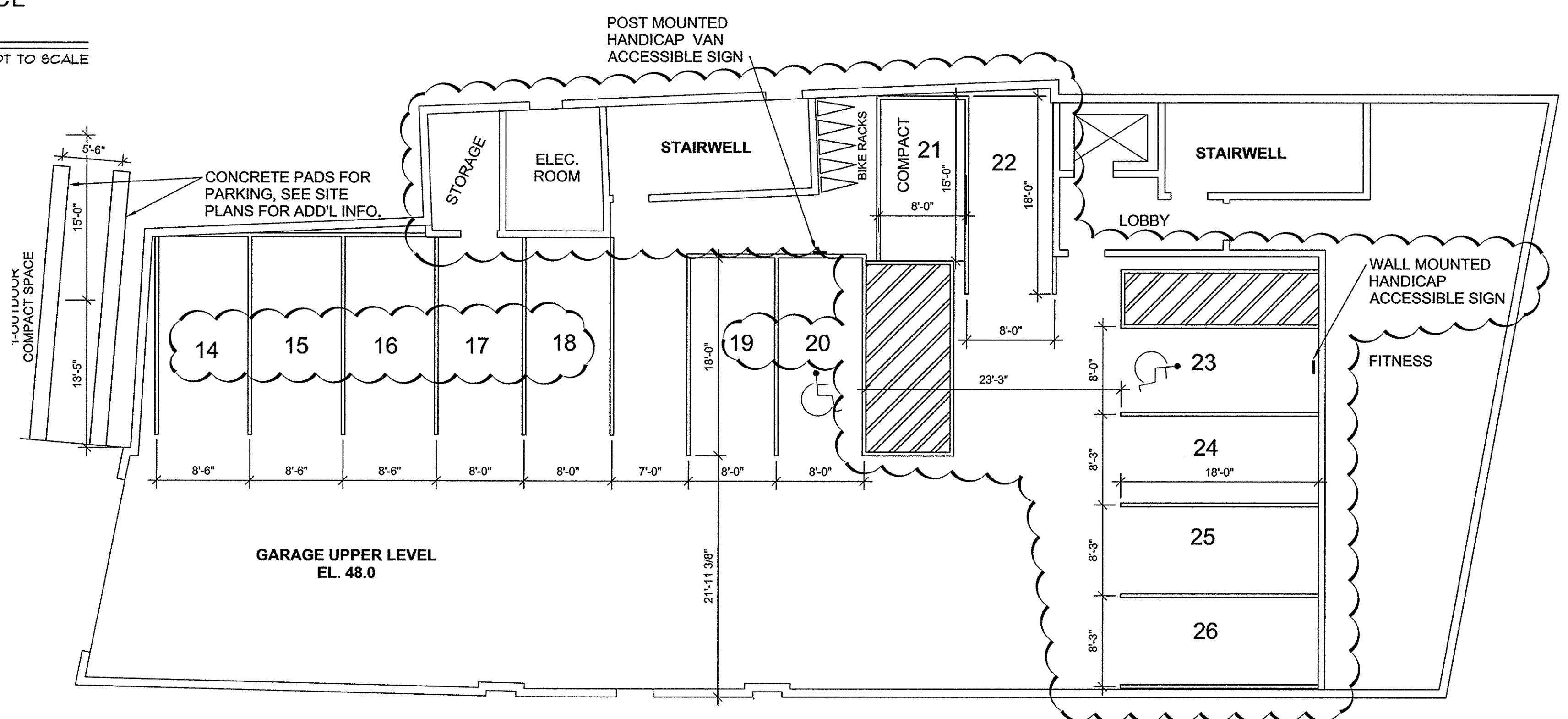


1 ACCESSIBLE SPACE SIGN DETAILS

NOT TO SCALE

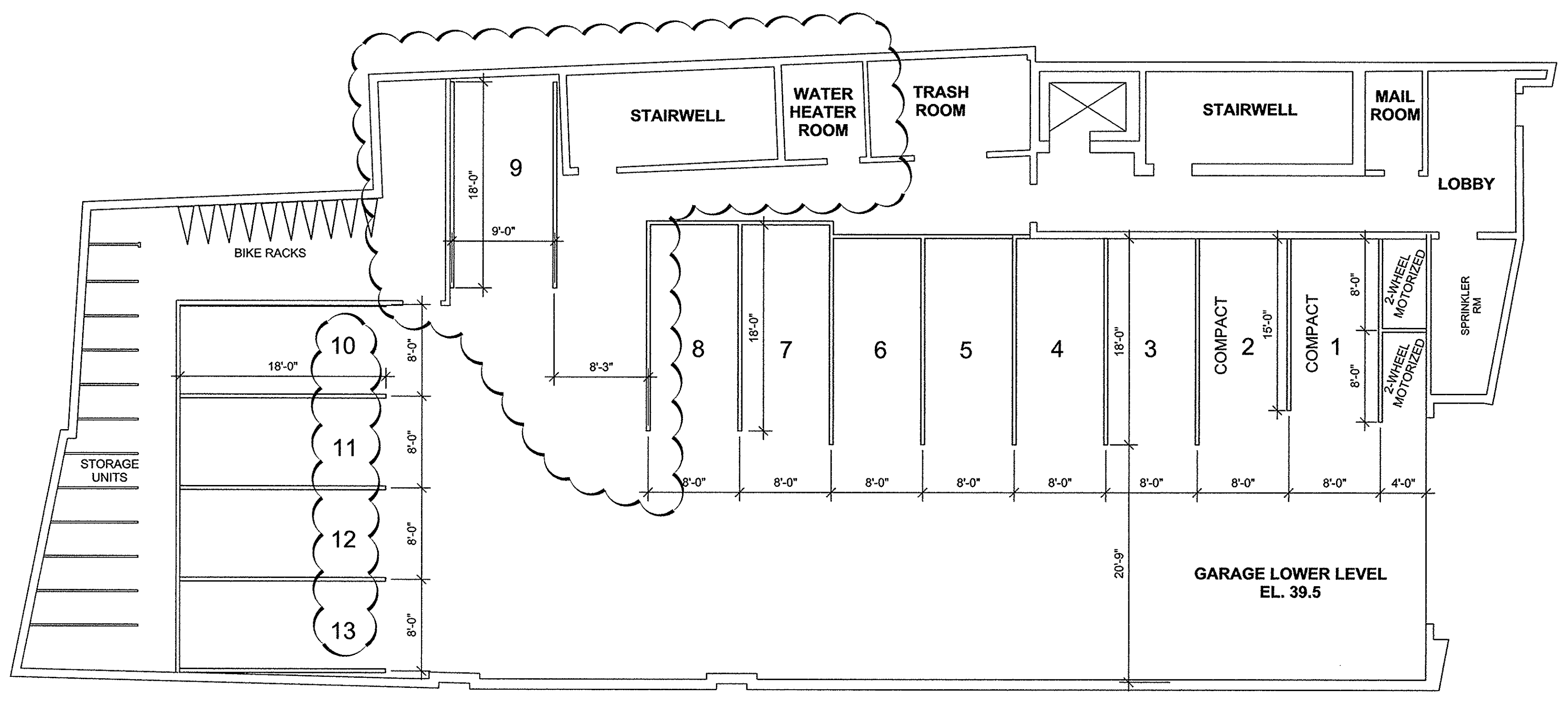
PARKING SPACES

- 9 - 8'-6" x 18'-0"
- 2 - 8'-3" x 18'-0"
- 11 - 8'-0" x 18'-0"
- 2 - 8'-0" x 15'-0" COMPACT SPACES
- 2 - 8'-0" x 18'-0" ACCESSIBLE SPACE W/ ACCESS AISLE



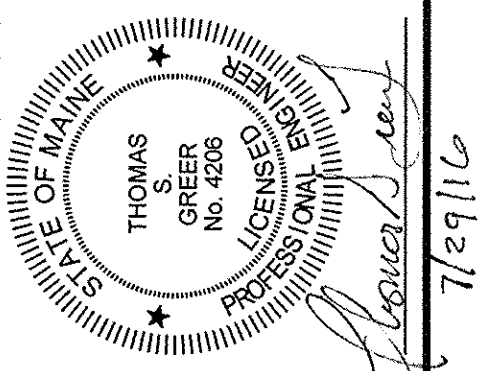
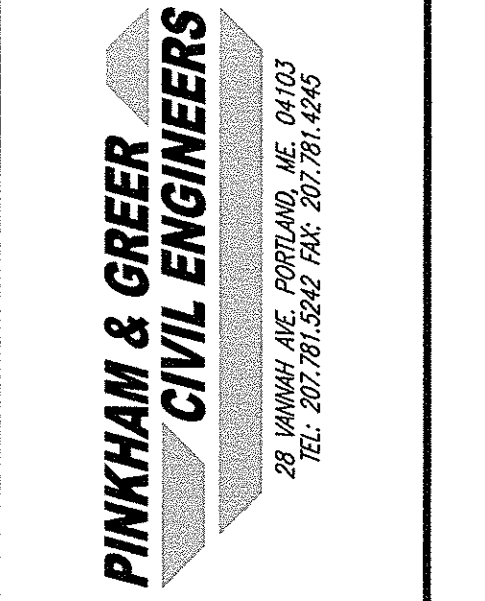
1st FLOOR PARKING—FEDERAL STREET ENTRANCE

SCALE: 1/8" = 1'-0"



BASEMENT PARKING—NEWBURY STREET ENTRANCE

SCALE: 1/8" = 1'-0"



REV.	DATE	DESCRIPTION
5	7/29/16	REV. ELEC. RM ACCESS, INTERIOR WALLS & PARKING LAYOUT
4	7/8/16	REV'D LAYOUT OF UTILITY ROOMS
3	5/18/16	REV'D PER STAFF COMMENTS
2	3/23/16	REV'D PER STAFF COMMENTS FOR SITE PLAN APPROVAL
1	3/8/16	REV'D PER STAFF REVIEW COMMENTS

LUMINATO CONDOMINIUM, LLC
118 CONGRESS STREET, UNIT 401
PORTLAND, MAINE

SCALE: AS SHOWN
DATE: JANUARY 22, 2016
PROJECT: 15178

DRN BY: JDC
DESIGN BY: TSG
CHK BY: TSC

LUMINATO CONDOMINIUMS
167 NEWBURY STREET, PORTLAND, MAINE

PARKING LAYOUT & DETAILS

