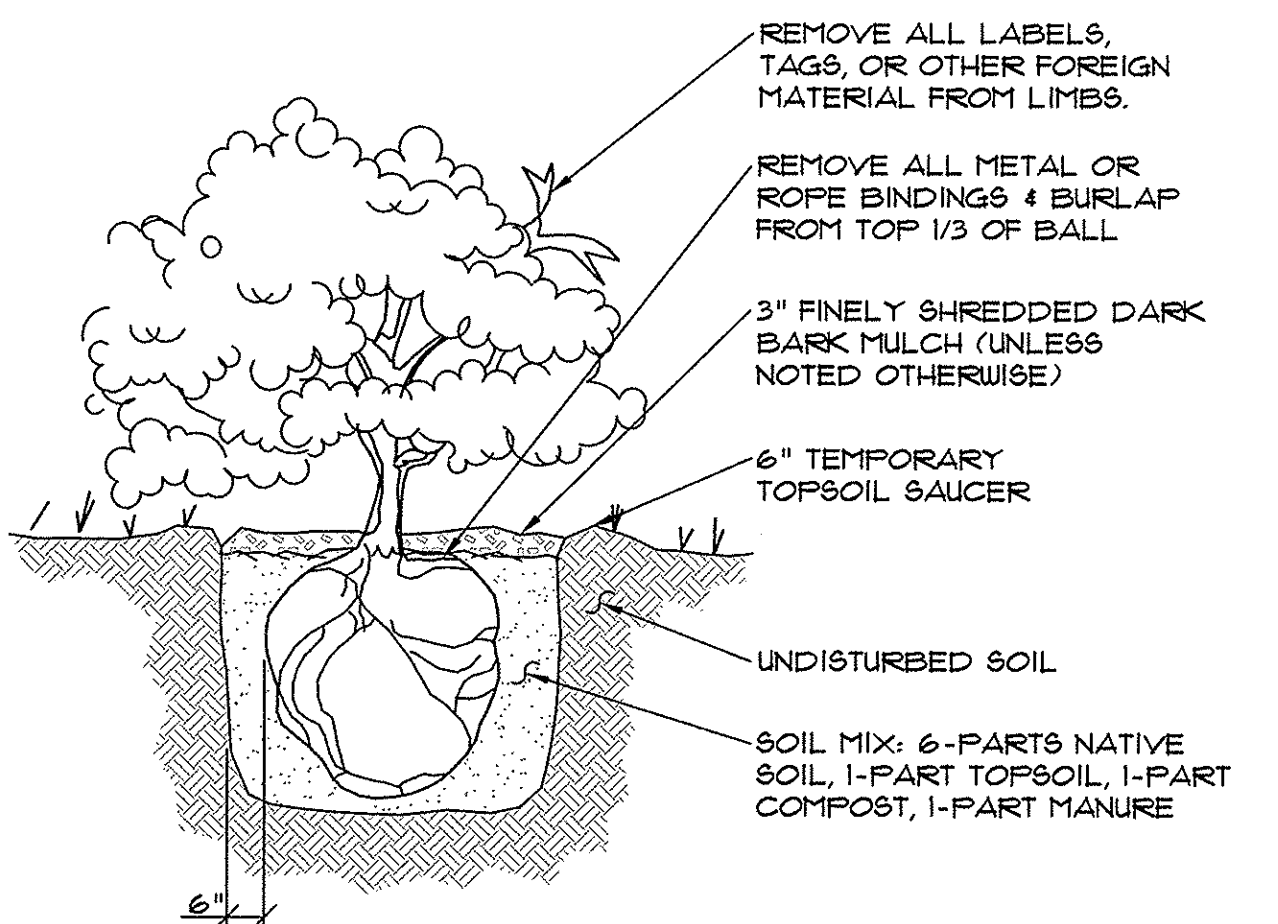
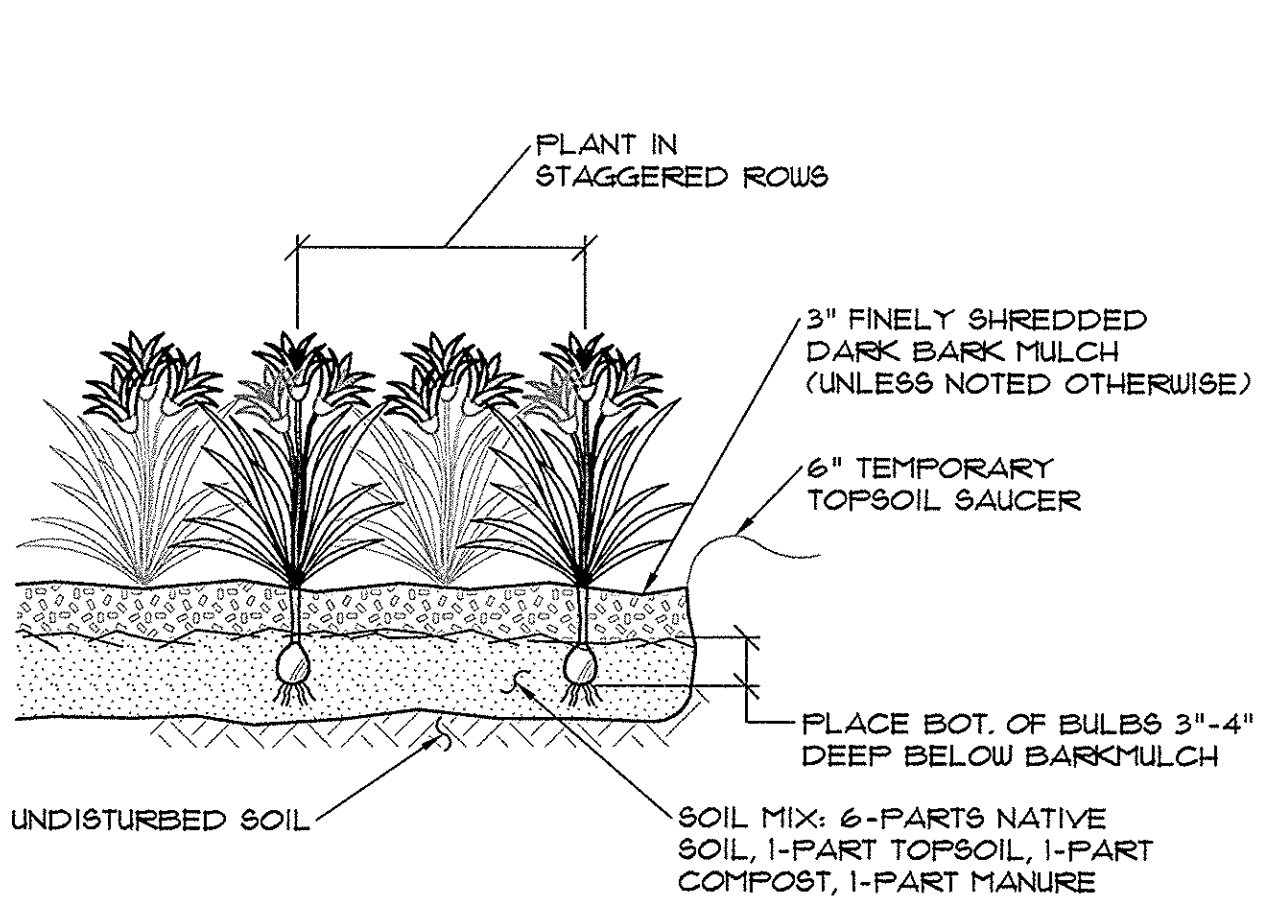


- NOTES:
1. PRUNE ALL DEAD AND BROKEN BRANCHES. RETAIN NATURAL SHAPE, NEVER CUT LEADER.
2. IN LEDGE CONDITIONS, BLASTING SHALL BE 10' DIA AND 4' BELOW TREE HOLE BOTTOM GRADE.

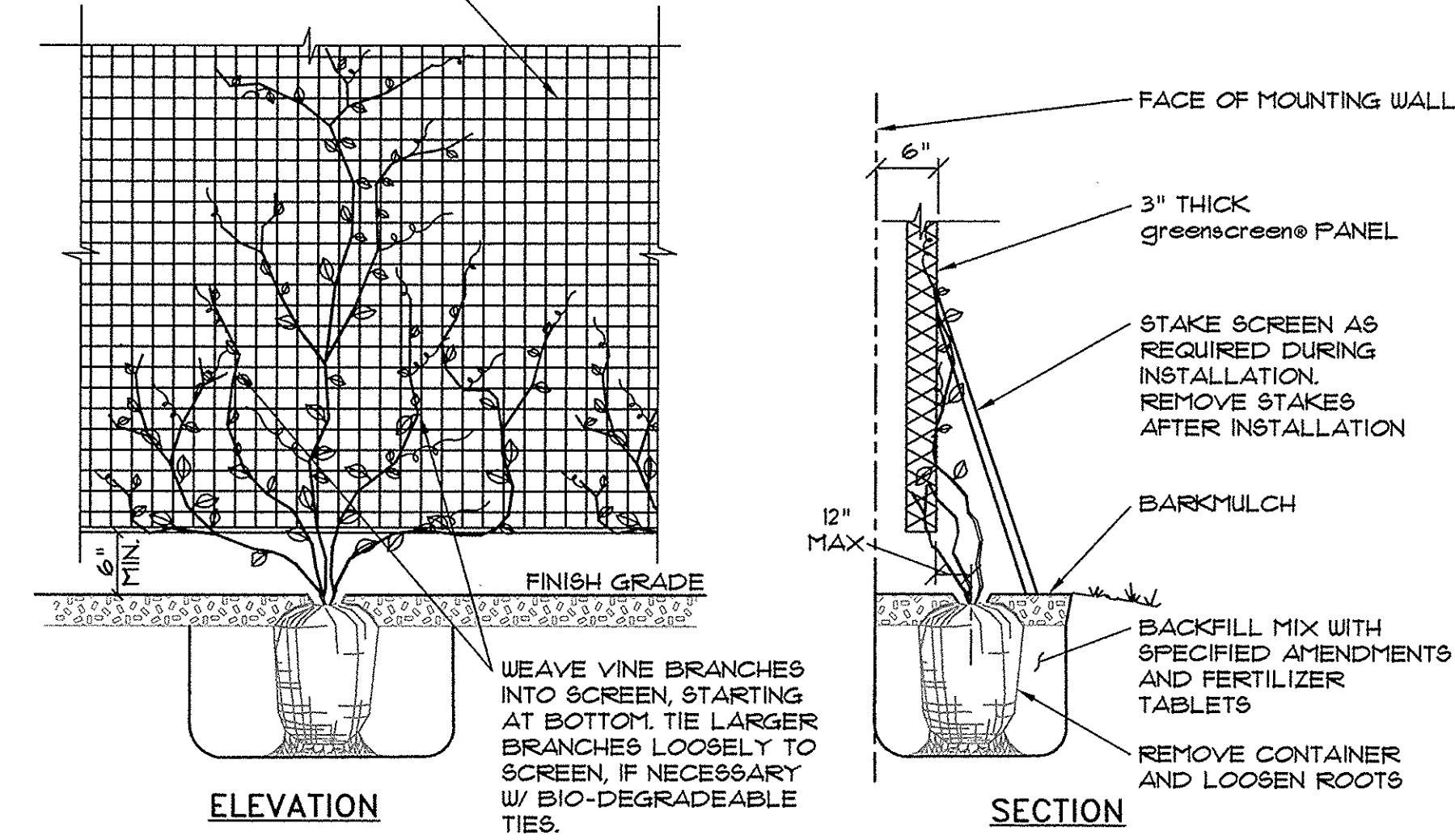
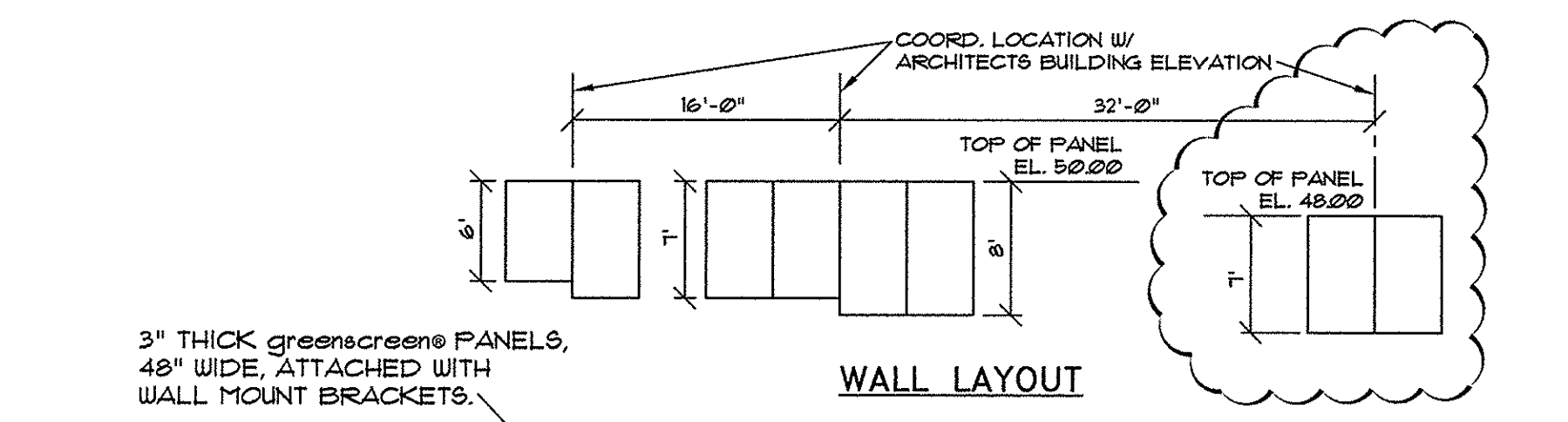
4 DECIDUOUS TREE PLANTING DETAIL NOT TO SCALE



3 SHRUB PLANTING DETAIL NOT TO SCALE



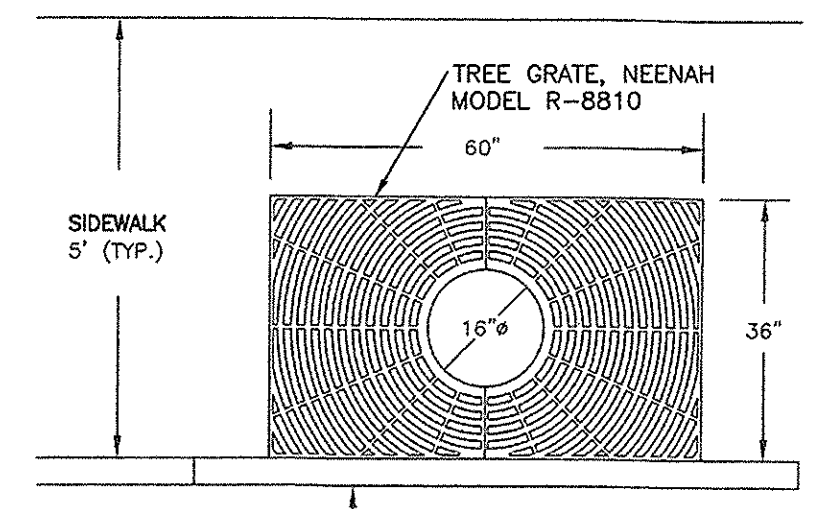
2 DAYLILY PLANTING DETAIL NOT TO SCALE



1 greenscreen® VINE PLANTING DETAIL NOT TO SCALE

LANDSCAPE NOTES

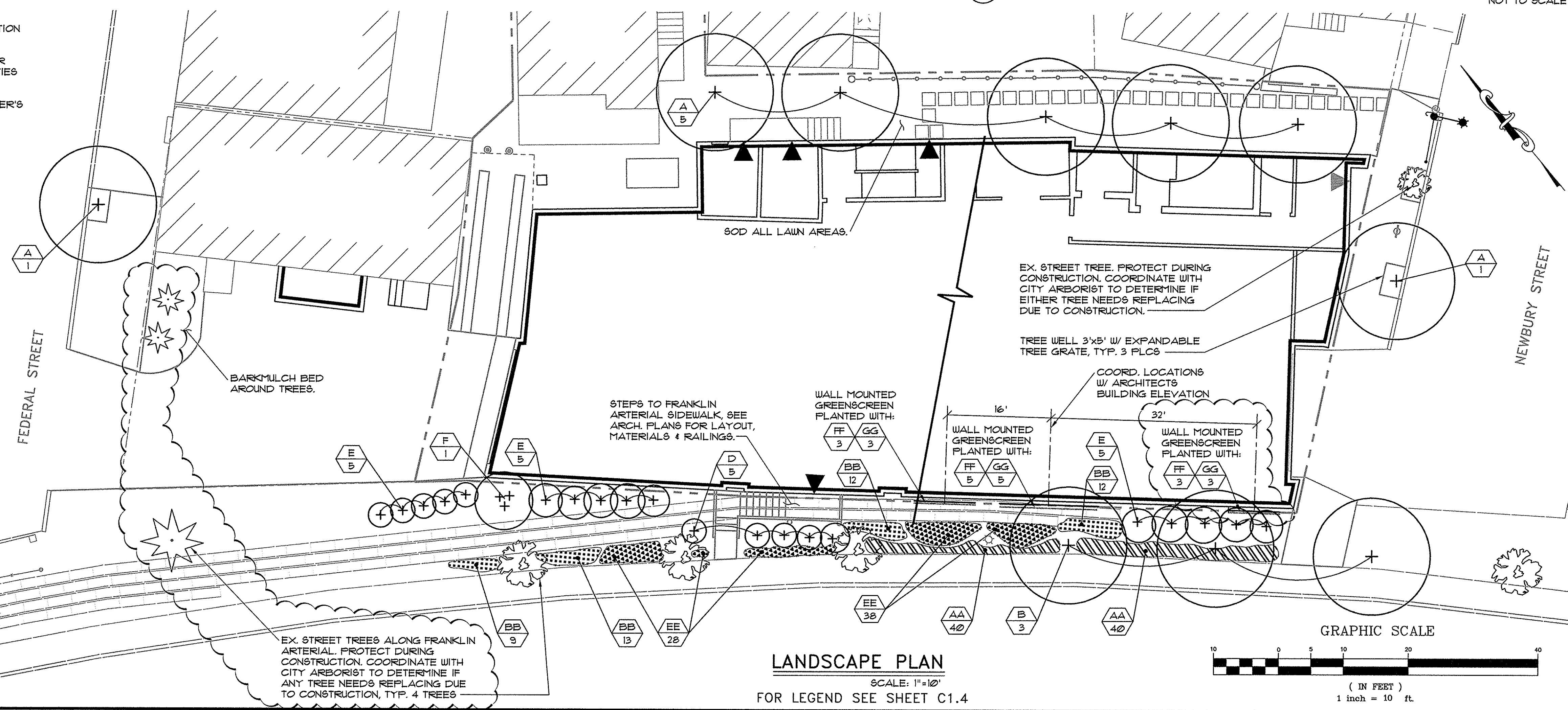
- GENERAL:**
- SAVE EXISTING TREES AS SHOWN. DO NOT CUT OR CLEAR ANY VEGETATION BEYOND THE IMPACT LIMIT LINE.
 - ALL PLANT MATERIALS INSTALLED ARE TO MEET THE SPECIFICATIONS OF THE "AMERICAN STANDARDS FOR NURSERY STOCK" BY THE AMERICAN ASSOCIATION OF NURSERYMEN.
 - ALL PROPOSED PLANT LOCATIONS SHALL BE AS SHOWN ON PLANS. CONTRACTOR SHALL VERIFY LOCATION OF ALL UTILITIES PRIOR TO PLANTING AND WILL NOTIFY OWNER'S REPRESENTATIVE IN THE EVENT OF CONFLICTS.
 - PLANT LOCATIONS ARE TO BE SCALED FROM THE LANDSCAPE PLAN UNLESS NOTED OTHERWISE.
 - NO PLANT MATERIAL SHALL BE INSTALLED UNTIL FINAL GRADING AND CONSTRUCTION HAS BEEN COMPLETED IN THE IMMEDIATE AREA.
 - FINAL QUANTITY FOR EACH PLANT TYPE IS NOTED IN THE PLANT LIST. THIS NUMBER SHALL TAKE PRECEDENCE IN THE CASE OF ANY DISCREPANCY BETWEEN QUANTITIES SHOWN IN THE LIST AND ON THE PLAN.
 - ANY PROPOSED SUBSTITUTIONS MUST BE APPROVED BY THE OWNER OR THE OWNER'S REPRESENTATIVE.
 - ALL DISTURBED AREAS TO BE LOAMED AND SEEDED.
- MAINTENANCE:**
- LAWS: SHALL BE WATERED, FERTILIZED AND MOWN ON A REGULAR BASIS ACCORDING TO SEASON AND RAINFALL, TO PRODUCE A STRONG TURF OF 80% MIN. COVERAGE WITHIN THE FIRST YEAR, FREE FROM SIZABLE THIN OR BARE SPOTS. REGRADING AND RESEEDING WILL BE PERFORMED ON BARE SPOTS UNTIL COVERAGE IS COMPLETE.
 - TREES & SHRUBS: THE ESTABLISHMENT PERIOD SHALL BE TWO CALENDAR YEARS FROM THE DATE OF FINAL ACCEPTANCE. DURING THE ESTABLISHMENT PERIOD THE OWNER OR OWNER'S CONTRACTOR SHALL WATER, CULTIVATE AND PRUNE AS REQUIRED TO MAINTAIN A HEALTHY GROWING CONDITION.
 - AT THE END OF THE ESTABLISHMENT PERIOD AND UPON SUBSEQUENT ANNUAL INSPECTIONS, PLANTS WHICH HAVE DIED OR FAILED TO THRIVE SHALL BE REPLACED WITH EQUIVALENT SIZE AND SPECIES. AFTER THE CONTRACTOR'S GUARANTEE PERIOD HAS ENDED, IT IS THE OWNER'S RESPONSIBILITY TO MAINTAIN AND REPLACE PLANTINGS.
 - TREES, SHRUBS AND LAWS WHICH ARE NOT IRRIGATED WITH AN AUTOMATIC SPRINKLER OR DRIP SYSTEM SHALL BE THOROUGHLY WATERED ON A REGULAR BASIS DURING PERIODS OF BELOW AVERAGE RAINFALL. SOIL SHOULD BE SAMPLED AT A DEPTH OF 12" AND IF DRY, WATER TO DEPTH OF 24".
 - MULCH IS TO BE MAINTAINED AT A DEPTH TO COMPLETELY COVER THE SOIL AND TO PRESERVE MOISTURE AND MINIMIZE WEEDS.
 - TREES, SHRUBS AND LAWS SHALL BE FERTILIZED ANNUALLY AND TREATED WITH INSECTICIDES AND/OR FUNGICIDES AS REQUIRED FOR CONTINUED HEALTHY GROWTH.
 - SUCKERS, WEEDS, AND DEAD WOOD SHALL BE REMOVED ON A SEASONAL BASIS, AND SHRUBS SHALL BE PRUNED TWICE A YEAR ACCORDING TO THE REQUIREMENTS OF EACH SPECIES (I.E. SOME SPECIES SHOULD NOT BE PRUNED AT ALL). SHRUBS SHALL NOT BE PRUNED INTO INDIVIDUALS BUT ALLOWED TO GROW INTO A MASS.
 - WHERE TREES ARE LOCATED NEAR SIDEWALKS OR PARKING LOTS, THE CANOPY SHALL BE LIMBED UP TO PROMOTE SAFE CLEARANCE TO 8' ABOVE GRADE.
 - LAWN AREAS SHALL BE MOWN AS OFTEN AS NECESSARY TO KEEP LAWS TO A 2 1/2 - 3" HEIGHT, AND AERATED ON A SEASONAL BASIS.
 - BEDS AND LAWN EDGES SHALL BE REGULARLY TRIMMED AND EDGED.
 - PERENNIAL AND ANNUAL BEDS SHALL BE DESIGNED, PLANTED AND MAINTAINED FOR SEASONAL COLOR AND INTEREST. ANNUALS MAY BE INCORPORATED TO A MAXIMUM LIMIT OF 25% OF THE BED AREA OF MAINTAINED BEDS FROM MAY 15 THROUGH NOVEMBER 15. PERENNIAL BEDS SHALL BE WATERED AS REQUIRED FOR HEALTHY PLANT GROWTH, AND WEEDED AND DEADHEADED ON A MONTHLY BASIS.



5 EXPANDABLE TREE GRATE (IV-4A) NOT TO SCALE

PLANT LIST

KEY COMMON NAME/BOTANICAL NAME	SIZE	ROOT	QUANTITY	NOTES
TREES & SHRUBS				
A RED MAPLE (<i>Acer rubrum</i>)	2 1/2" cal.	B4B	1	
B HONEY LOCUST (<i>G. triacanthos 'inermis'</i>)	2 1/2" cal.	B4B	3	
D BOTTLEBRUSH (<i>Fothergilla gardenii</i>)	3"	CONT.	5	
E SHASTA VIBURNUM (<i>V. plicatum tomentosum 'shasta'</i>)	4-5' tall	B4B	15	3 CANES
F CORNELLIAN CHERRY (<i>C. mas</i>)	5-6' tall	B4B	1	3 TRUNK
PERENNIALS & VINES				
AA BARREN STRAWBERRY (<i>Waldsteinia ternata</i>)	--	--	80	
BB DAYLILY (<i>hemerocallis 'stello d'oro'</i>)	--	CONT.	46	
EE ASTILBE (<i>astilbe x chinensis 'milk & honey'</i>)	--	PTD	66	
FF CLEMATIS VARIETIES :SWEET AUTUMN: (<i>paniculata</i>)	--	PTD	11	WHITE BLOM
GG HONEYBUCKLE VINE (<i>lonicera x heckrottii 'goldflame'</i>)	--	PTD	11	



LANDSCAPE PLAN
SCALE: 1" = 10'
FOR LEGEND SEE SHEET C1.4

REV.	DATE	DESCRIPTION
1	3/8/16	REV PER STAFF REVIEW COMMENTS
2	3/17/16	ADDED LANDSCAPE SCREENING
3	3/25/16	REV PER STAFF COMMENTS FOR SITE PLAN APPROVAL
4	5/16/16	REV PER STAFF COMMENTS
5	7/26/16	REV LAYOUT OF UTILITY ROOMS
6	7/19/16	REV PER OWNER REVIEW & RFI #2

LUMINATO CONDOMINIUMS, LLC
118 CONGRESS STREET, UNIT 401
PORTLAND, MAINE
SCALE: AS SHOWN
DATE: JANUARY 22, 2016
PROJECT: 15178
DRN BY: JDC
DESG BY: TSG
CHK BY: TSG

LUMINATO CONDOMINIUMS
167 NEWBURY STREET, PORTLAND, MAINE
LANDSCAPE PLAN, NOTES AND DETAILS
CITY OF PORTLAND
APPROVED SITE PLAN
Sub to Conditions of Approval
and Standard Conditions
DATE OF APPROVAL: March 31, 2016
PLANNER: Caitlin Cameron
PROJECT NO. 2016-021