

NewHeight Group
118 Congress Street, Unit 401
Portland, Maine

Prepared For:

Consultant:

ARCHITECT
architects
48 Union Wharf Portland, Maine 04101
(207) 772-6022 ARCHTYPE@ARCHTYPEPA.COM

Architect:

LUMINATO
167 Newbury Street Portland, Maine

Project:

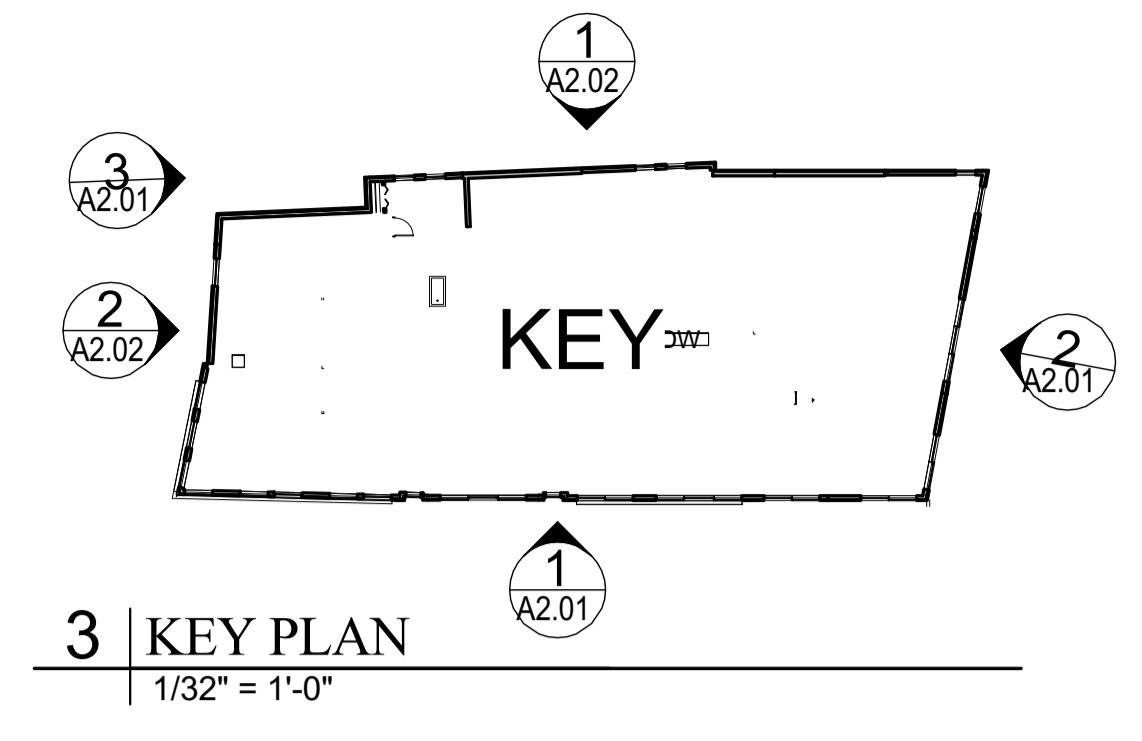
Revisions:

Scale: As indicated

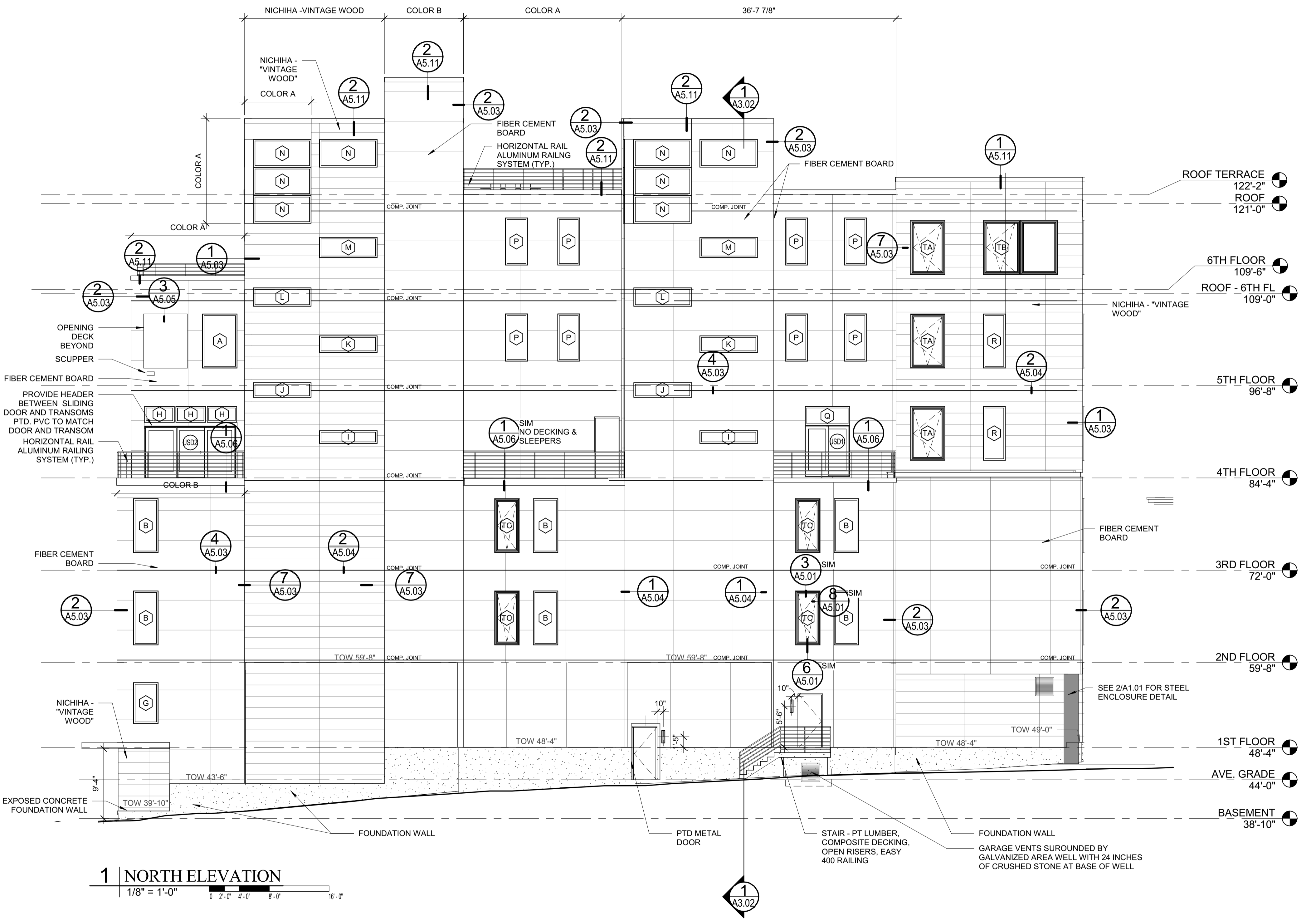
Date: SEP. 19, 2016

CITY OF PORTLAND
APPROVED CITY PLAN
Subject to Conditions of Approval

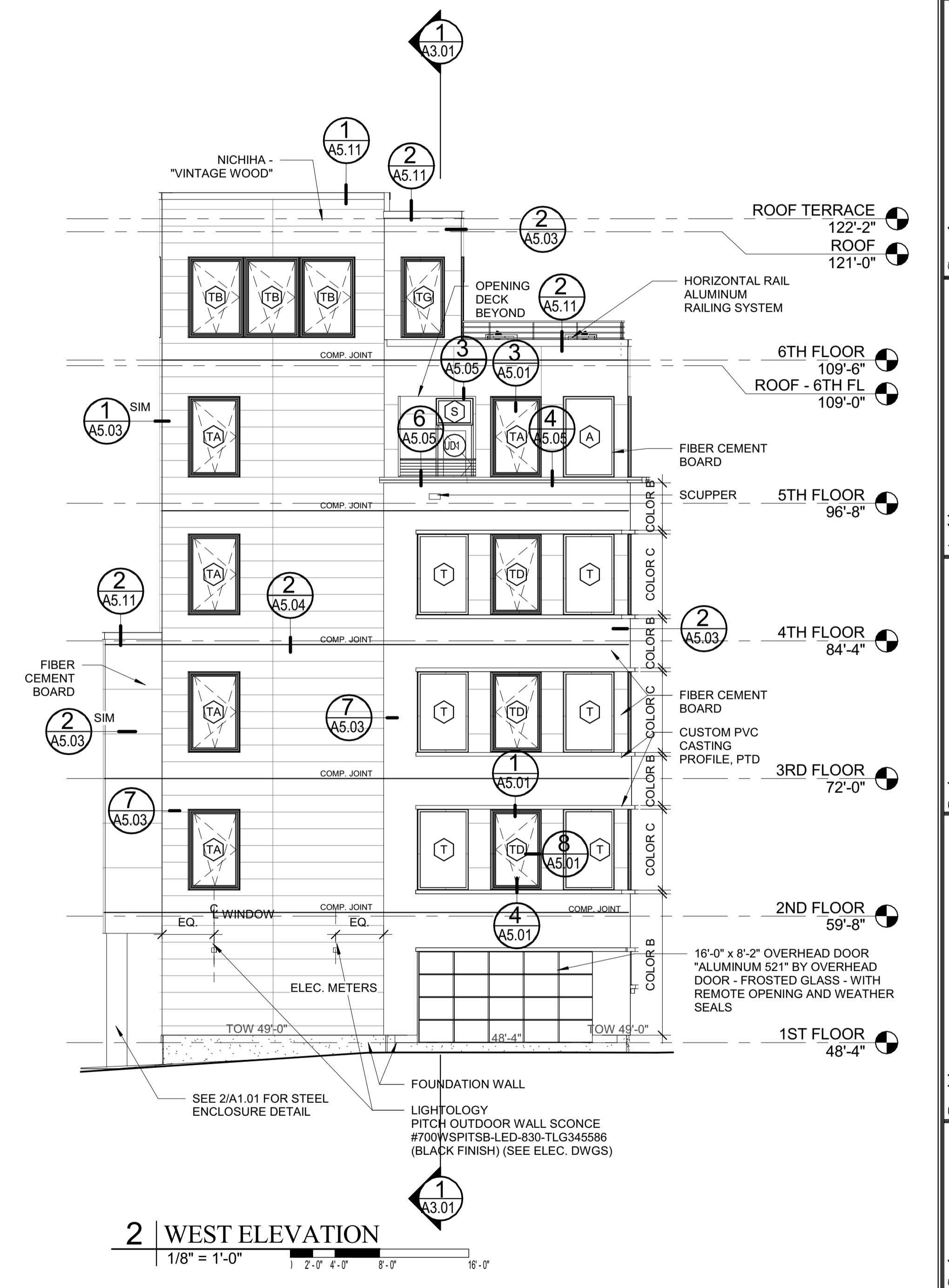
DATE of APPROVAL: March 31, 2016
PLANNER: Caitlin Cameron
PROJECT NO.: 2016-021



3 KEY PLAN
1/32" = 1'-0"



1 NORTH ELEVATION
1/8" = 1'-0"



2 WEST ELEVATION
1/8" = 1'-0"



DATE of APPROVAL: March 31, 2016
PLANNER: Caitlin Cameron
PROJECT NO.: 2016-021