

**NewHeight Group**  
 118 Congress Street, Unit 401  
 Portland, Maine

Prepared For:

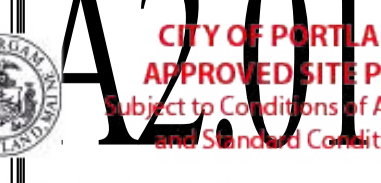
**ARCHETYPE architects**  
 48 Union Wharf Portland, Maine 04101  
 (207) 772-6022 ARCHETYPE@ARCHETYPEPA.COM

Project: **LUMINATO**  
 167 Newbury Street Portland, Maine

Revisions:

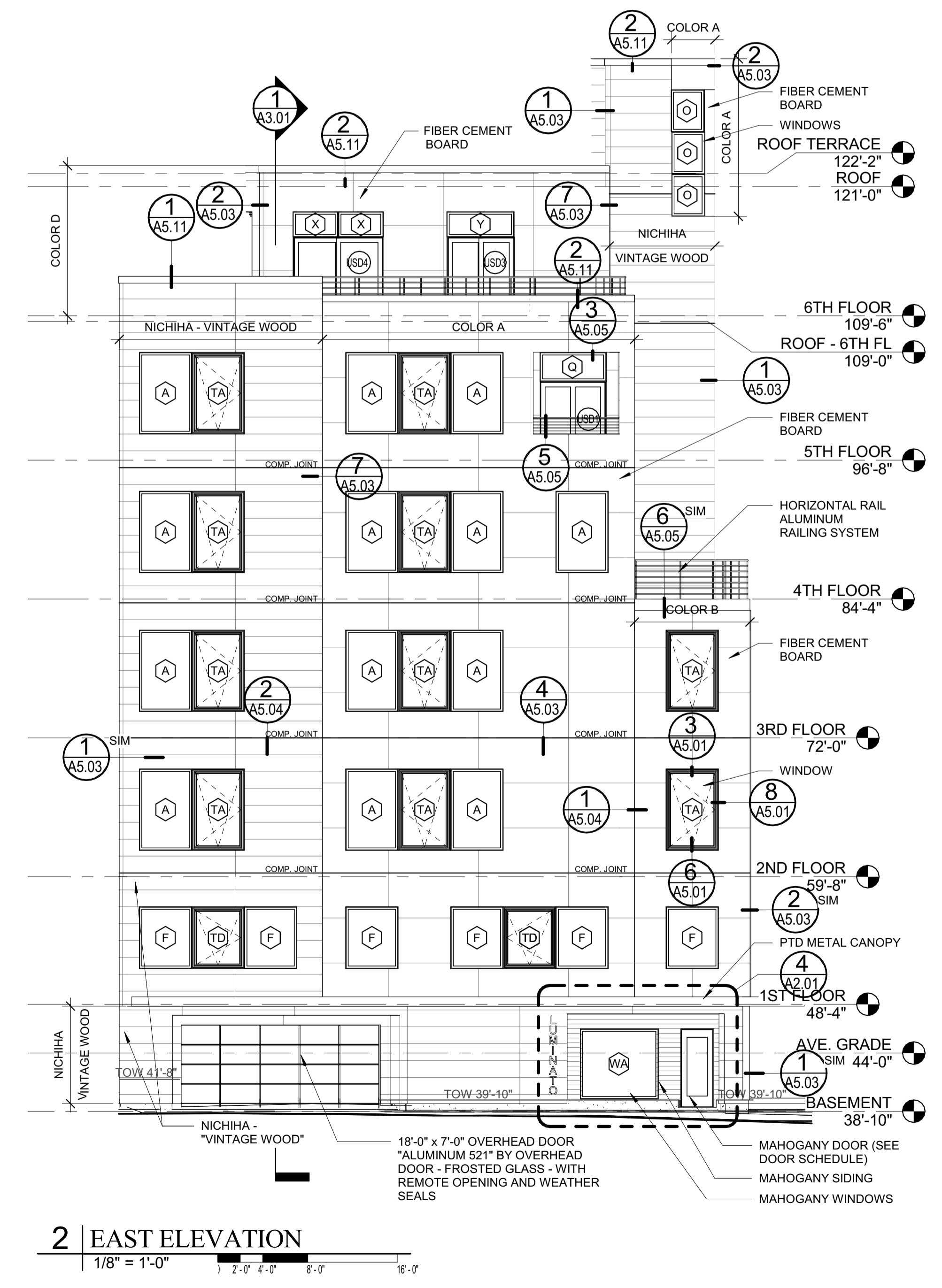
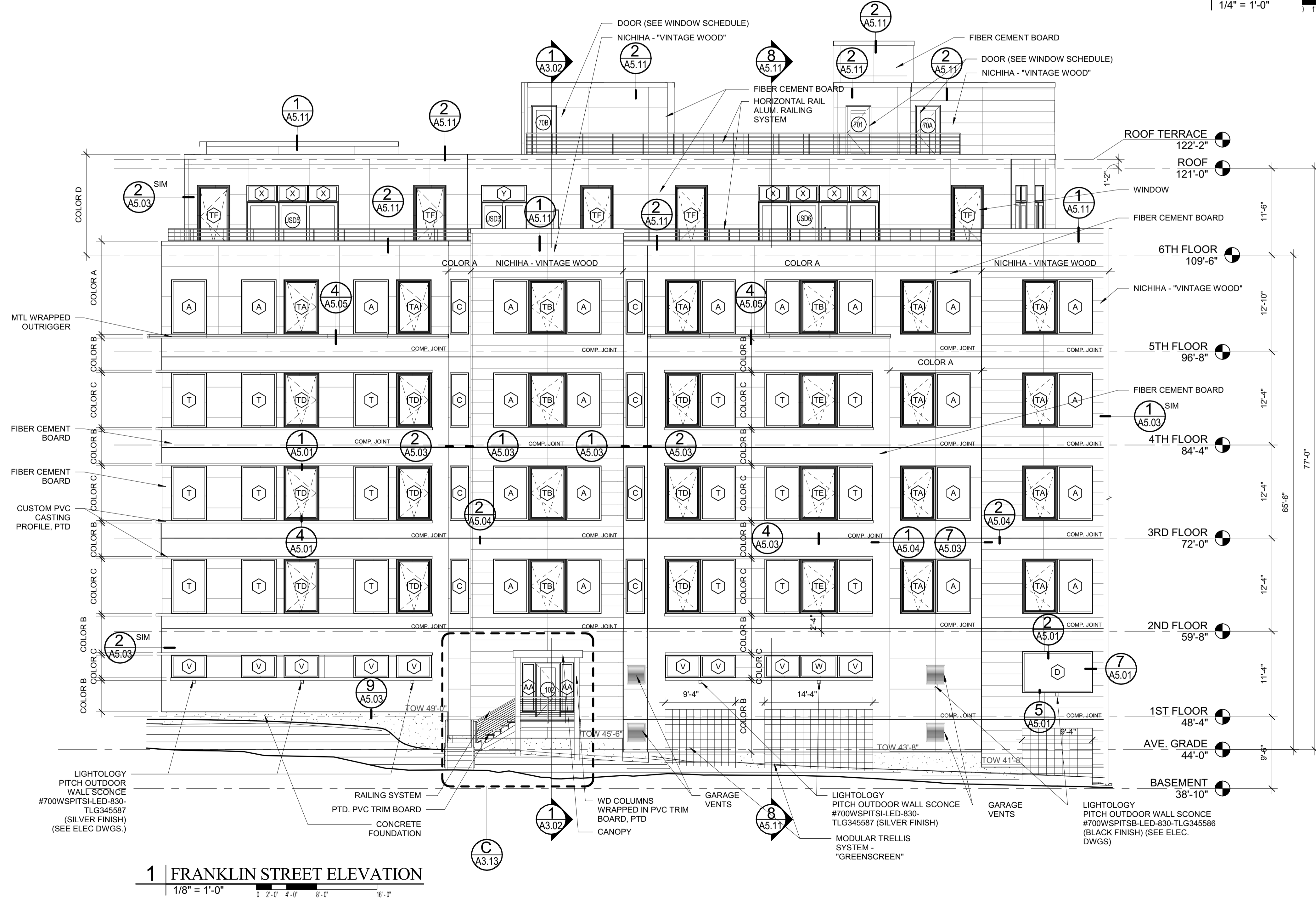
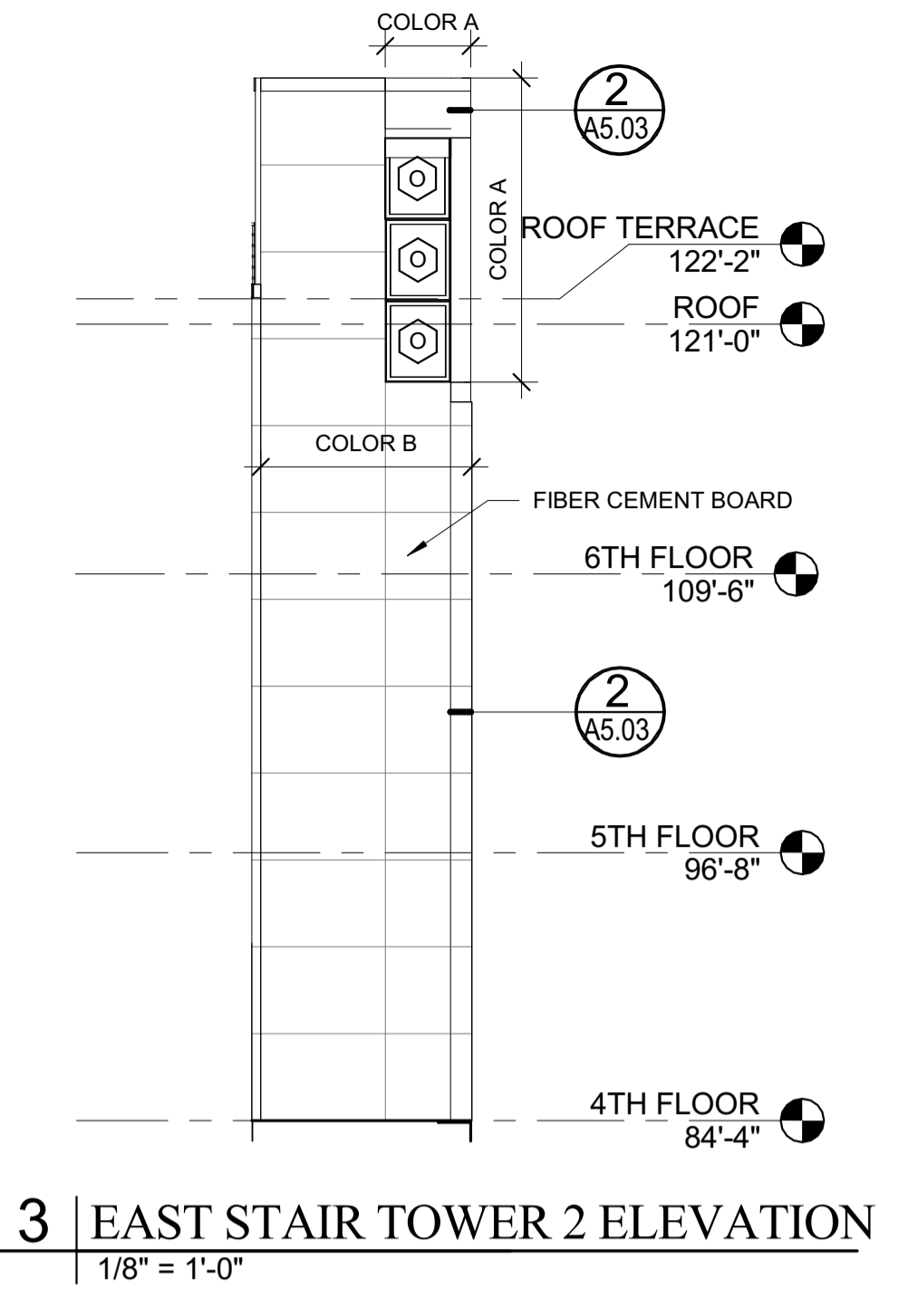
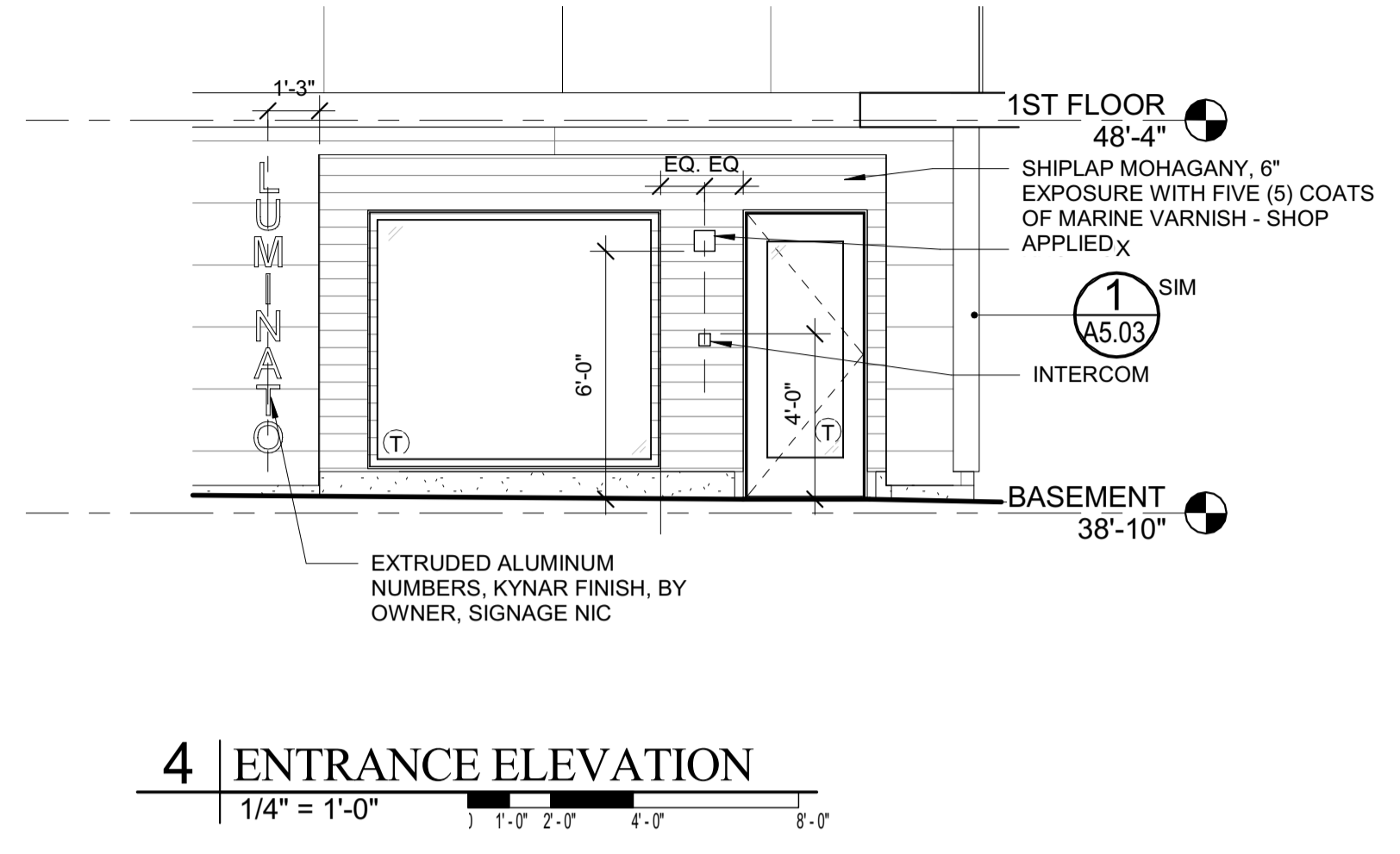
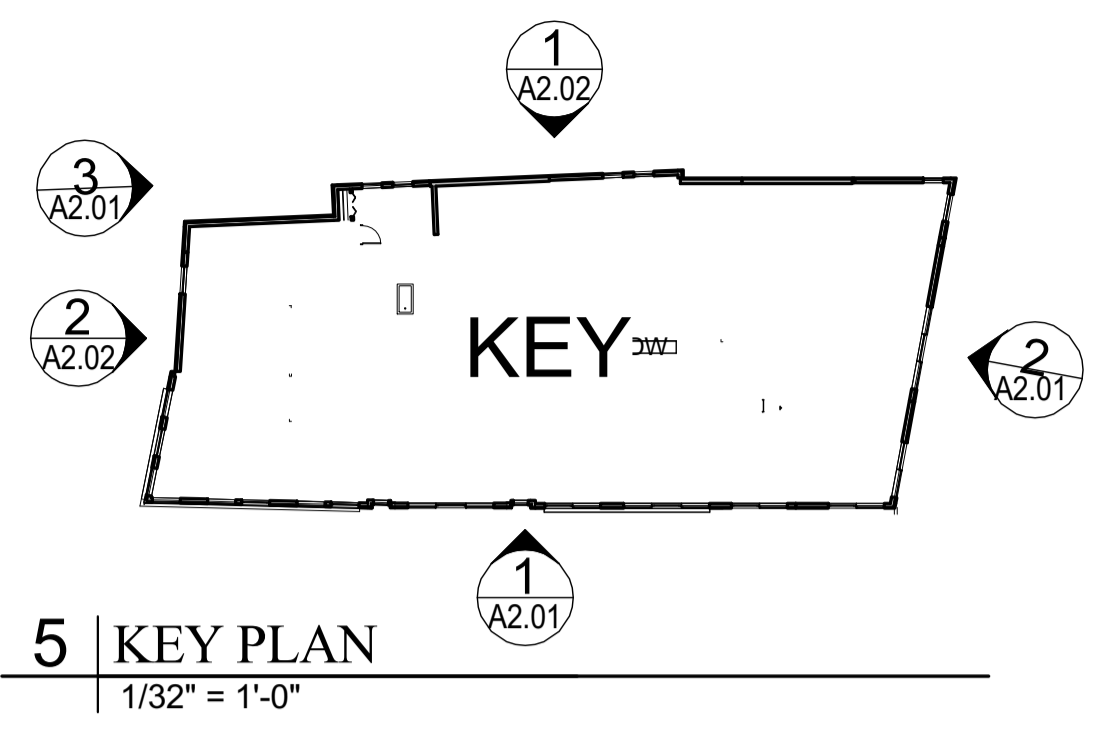
Date: **SEP. 19, 2016**  
 Scale: As indicated

**BUILDING ELEVATIONS**



DATE OF APPROVAL: March 31, 2016  
 PLANNER: Caitlin Cameron  
 PROJECT NO.: 2016-021

**A201**



LIGHTTOLOGY PITCH OUTDOOR WALL SCONCE #700WSPITSL-LED-830-TLG345587 (SILVER FINISH) (SEE ELEC DWGS.)  
 RAILING SYSTEM PTD. PVC TRIM BOARD CONCRETE FOUNDATION  
 WD COLUMNS WRAPPED IN PVC TRIM BOARD, PTD CANOPY  
 GARAGE VENTS  
 LIGHTTOLOGY PITCH OUTDOOR WALL SCONCE #700WSPITSL-LED-830-TLG345587 (SILVER FINISH)  
 MODULAR TRELLIS SYSTEM - "GREENSCREEN"  
 LIGHTTOLOGY PITCH OUTDOOR WALL SCONCE #700WSPITSL-LED-830-TLG345586 (BLACK FINISH) (SEE ELEC. DWGS.)  
 GARAGE VENTS  
 18'-0" x 7'-0" OVERHEAD DOOR "ALUMINUM 52" BY OVERHEAD DOOR - FROSTED GLASS - WITH REMOTE OPENING AND WEATHER SEALS  
 MAHOGANY DOOR (SEE DOOR SCHEDULE)  
 MAHOGANY SIDING  
 MAHOGANY WINDOWS