

**(FIFTH FLOOR)**  
**MOST HYDRAULICALLY REMOTE AREA**  
 (1.0 GPM/SQ.FT. / 238 SQ.FT.)  
 (ELEV. @ HIGHEST HEAD = 107.00')  
 REMOTE AREA HAS BEEN MODIFIED IN ACCORDANCE WITH NFPA 13 (2016) SECTION 11.2.2.2.3.1

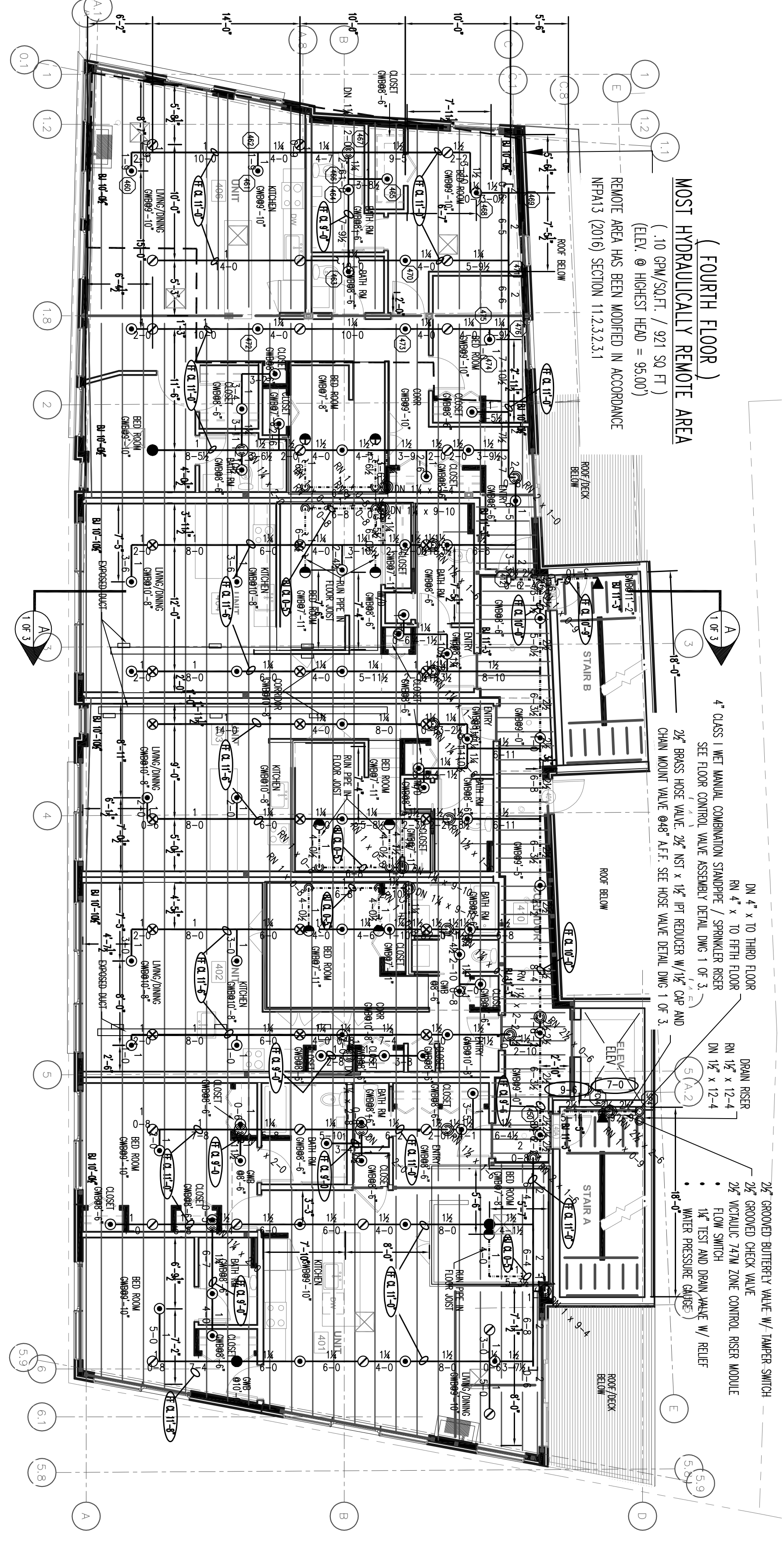
**HYDRAULIC-SYSTEM**  
 THIS BUILDING IS PROTECTED BY A HYDRAULICALLY DESIGNED AUTOMATIC SPRINKLER SYSTEM.  
**LOCATION:** FIFTH FLOOR  
**WET SYSTEM**  
 No. OF SPRINKLERS: 11  
**BASIS OF DESIGN:** .10  
 1. DESIGN (GPM/SQ.FT.)  
 2. DESIGNED AREA OF PROTECTION (SQ.FT.)  
**SYSTEM DEMAND:** 242.43 GPM  
 1. WATER FLOW RATE AT 158.27 PSI  
 2. RESIDUAL PRESSURE AT 80.207 PSI  
 BASE OF RISERS

**FIRE SPRINKLER PLAN - FIFTH FLOOR**  
 SCALE: 1/8"=1'-0"  
 AREA PROTECTED: 5,750 SQ.FT.  
 FINISH FLOOR ELEVATION: 96.67'  
 COLOR CODE:

Symbol	Count	Thread	SI#	K-FACTOR	TEMP	Description	Note
○	76	1/2"	RA1414	5.6	200°	RELIABLE MODEL FTR#66 WHITE PENDENT W/WHITE RECESSED ESC.	ON DROP
●	2	1/2"	RA1414	5.6	200°	RELIABLE MODEL FTR#66 WHITE PENDENT W/WHITE RECESSED ESC.	ABOVE / BELOW
○	12	1/2"	RA4454	5.6	212°	RELIABLE MODEL KFR-COS COMBUSTIBLE CONCEALED SPACE UPRIGHT	ON LINE
○	9	1/2"	RA1414	5.6	200°	RELIABLE MODEL FTR#66 BRASS PENDENT	ON LINE
○	32	1/2"	RA4454	5.6	212°	RELIABLE MODEL KFR-COS COMBUSTIBLE CONCEALED SPACE UPRIGHT	ON SPRIG
○	2	3/4"	RA882	8.0	200°	RELIABLE MODEL FTR#66 BRASS HORIZONTAL SIDEWALL	ON LINE
◀	1	1"	RS214	5.6	200°	RELIABLE MODEL FTR#66 CHECKED DRY HORIZ. SIDEWALL W/	ON LINE

138 = Total Number of Heads FIFTH FLOOR

**HYDRAULIC DATA NAMEPLATE**  
 TO BE MOUNTED AT SYSTEM RISER  
 INDICATES HYDRAULIC REFERENCE POINTS.



**(FOURTH FLOOR)**  
**MOST HYDRAULICALLY REMOTE AREA**  
 (1.0 GPM/SQ.FT. / 971 SQ.FT.)  
 (ELEV. @ HIGHEST HEAD = 95.00')  
 REMOTE AREA HAS BEEN MODIFIED IN ACCORDANCE WITH NFPA 13 (2016) SECTION 11.2.2.2.3.1

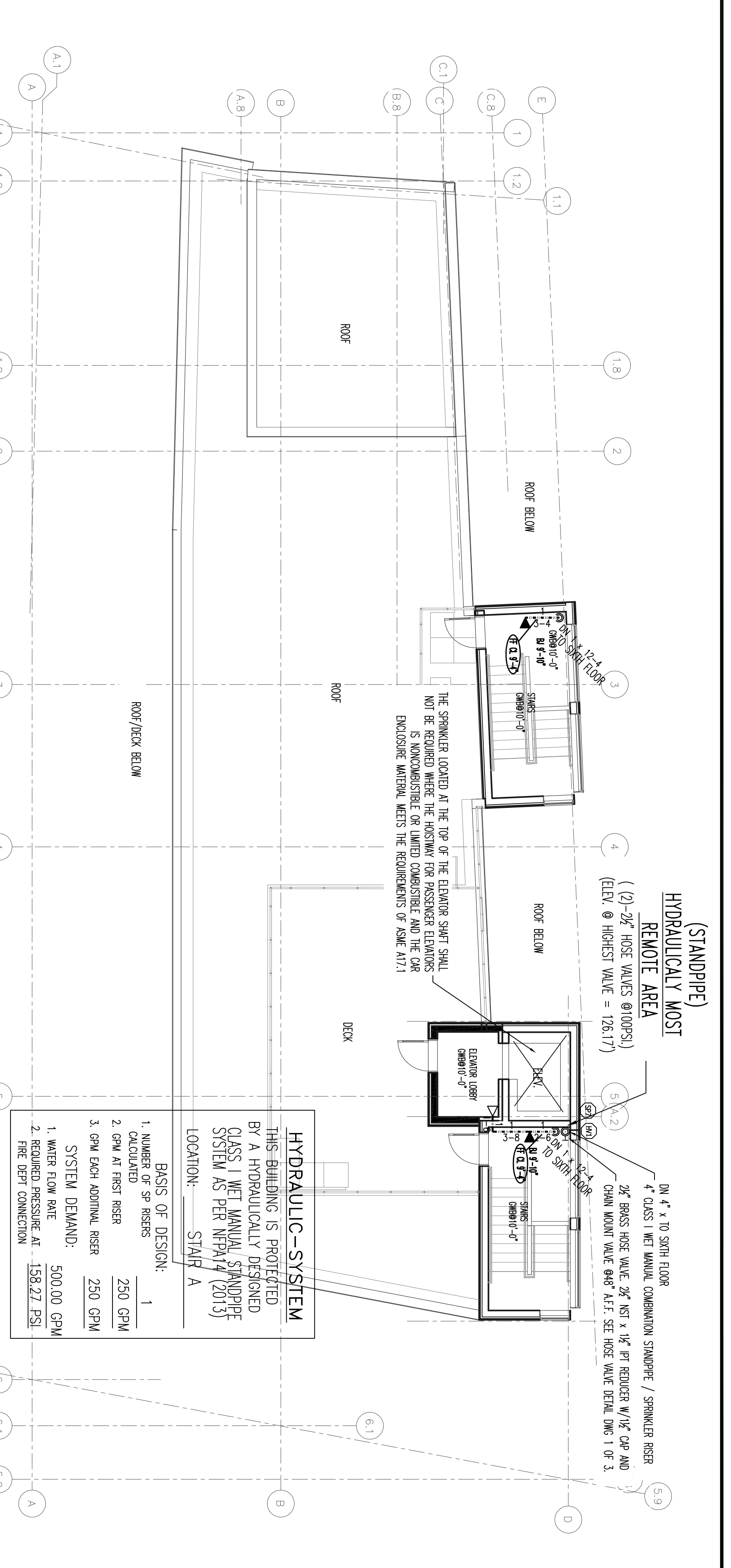
**HYDRAULIC-SYSTEM**  
 THIS BUILDING IS PROTECTED BY A HYDRAULICALLY DESIGNED AUTOMATIC SPRINKLER SYSTEM.  
**LOCATION:** FOURTH FLOOR  
**WET SYSTEM**  
 No. OF SPRINKLERS: 10  
**BASIS OF DESIGN:** .10  
 1. DESIGN (GPM/SQ.FT.)  
 2. DESIGNED AREA OF PROTECTION (SQ.FT.)  
**SYSTEM DEMAND:** 921.50 GPM  
 1. WATER FLOW RATE AT 85.216 PSI  
 2. RESIDUAL PRESSURE AT 85.216 PSI  
 BASE OF RISERS

**FIRE SPRINKLER PLAN - FOURTH FLOOR**  
 SCALE: 1/8"=1'-0"  
 AREA PROTECTED: 5,750 SQ.FT.  
 FINISH FLOOR ELEVATION: 84.33'  
 COLOR CODE:

Symbol	Count	Thread	SI#	K-FACTOR	TEMP	Description	Note
○	77	1/2"	RA1414	5.6	200°	RELIABLE MODEL FTR#66 WHITE PENDENT W/WHITE RECESSED ESC.	ON DROP
●	3	1/2"	RA1414	5.6	200°	RELIABLE MODEL FTR#66 WHITE PENDENT W/WHITE RECESSED ESC.	ABOVE / BELOW
○	18	1/2"	RA4454	5.6	212°	RELIABLE MODEL KFR-COS COMBUSTIBLE CONCEALED SPACE UPRIGHT	ON LINE
○	9	1/2"	RA1414	5.6	200°	RELIABLE MODEL FTR#66 BRASS PENDENT	ON SPRIG
○	21	1/2"	RA4454	5.6	212°	RELIABLE MODEL KFR-COS COMBUSTIBLE CONCEALED SPACE UPRIGHT	ON SPRIG
◀	2	3/4"	RA882	8.0	200°	RELIABLE MODEL FTR#66 BRASS HORIZONTAL SIDEWALL	ON LINE

133 = Total Number of Heads FOURTH FLOOR

**HYDRAULIC DATA NAMEPLATE**  
 TO BE MOUNTED AT SYSTEM RISER  
 INDICATES HYDRAULIC REFERENCE POINTS.



**(STANDPIPE)**  
**MOST HYDRAULICALLY REMOTE AREA**  
 (2.25 GPM/SQ.FT. / 100 SQ.FT.)  
 (ELEV. @ HIGHEST HEAD = 128.17')  
 REMOTE AREA HAS BEEN MODIFIED IN ACCORDANCE WITH NFPA 13 (2016) SECTION 11.2.2.2.3.1

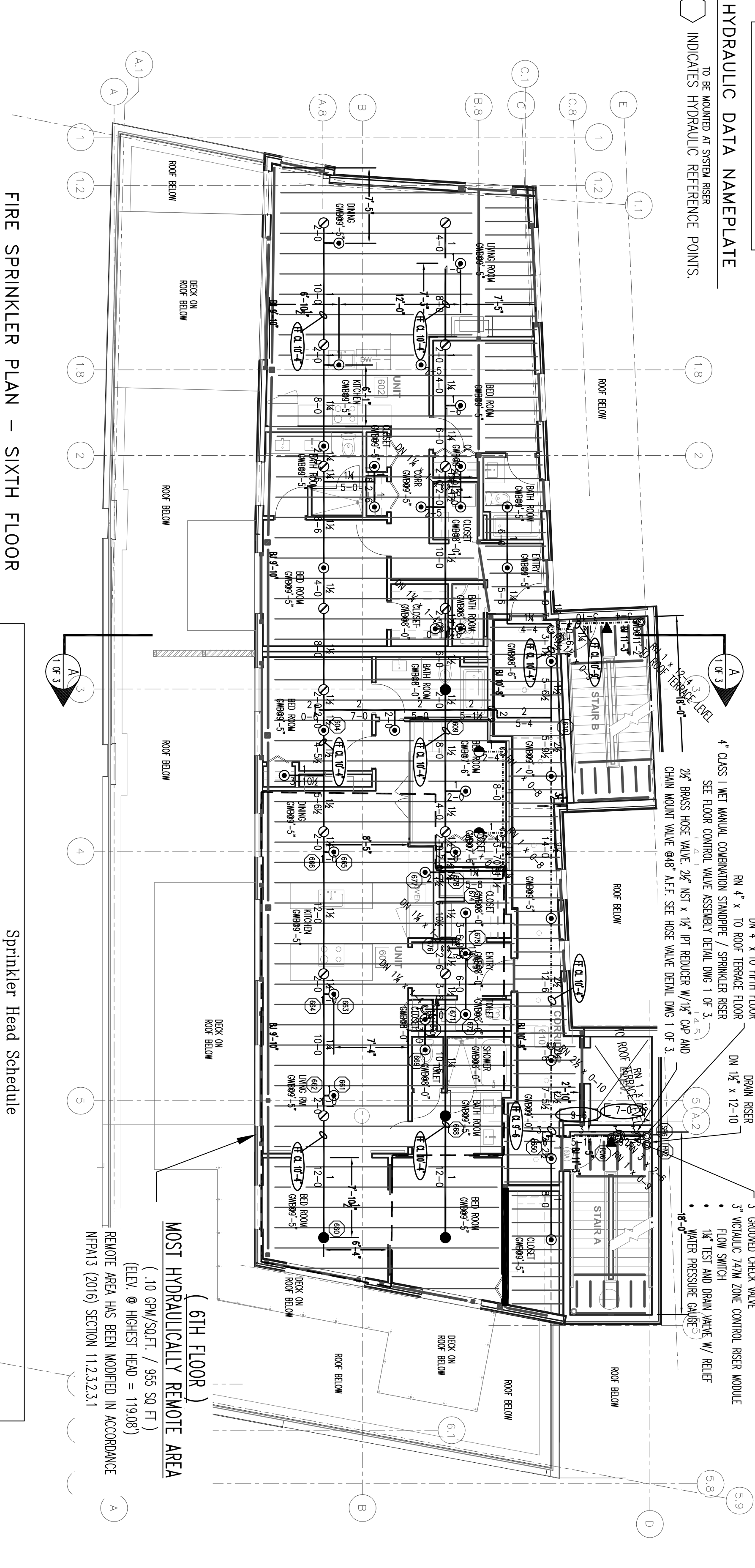
**HYDRAULIC-SYSTEM**  
 THIS BUILDING IS PROTECTED BY A HYDRAULICALLY DESIGNED AUTOMATIC SPRINKLER SYSTEM.  
**LOCATION:** ROOF TERRACE  
**WET SYSTEM**  
 No. OF SPRINKLERS: 3  
**BASIS OF DESIGN:** .10  
 1. DESIGN (GPM/SQ.FT.)  
 2. DESIGNED AREA OF PROTECTION (SQ.FT.)  
**SYSTEM DEMAND:** 205.06 GPM  
 1. WATER FLOW RATE AT 83.686 PSI  
 2. RESIDUAL PRESSURE AT 83.686 PSI  
 BASE OF RISERS

**FIRE SPRINKLER PLAN - ROOF TERRACE**  
 SCALE: 1/8"=1'-0"  
 AREA PROTECTED: 345 SQ.FT.  
 FINISH FLOOR ELEVATION: 122.17'  
 COLOR CODE:

Symbol	Count	Thread	SI#	K-FACTOR	TEMP	Description	Note
◀	1	1/2"	RA1435	5.6	200°	RELIABLE MODEL FTR#66 WHITE HORIZONTAL SIDEWALL	ON LINE
◀	2	3/4"	RA882	8.0	200°	RELIABLE MODEL FTR#66 BRASS HORIZONTAL SIDEWALL	ON LINE

3 = Total Number of Heads ROOF TERRACE

**HYDRAULIC DATA NAMEPLATE**  
 TO BE MOUNTED AT SYSTEM RISER  
 INDICATES HYDRAULIC REFERENCE POINTS.



**(SIXTH FLOOR)**  
**MOST HYDRAULICALLY REMOTE AREA**  
 (1.0 GPM/SQ.FT. / 353 SQ.FT.)  
 (ELEV. @ HIGHEST HEAD = 119.08')  
 REMOTE AREA HAS BEEN MODIFIED IN ACCORDANCE WITH NFPA 13 (2016) SECTION 11.2.2.2.3.1

**HYDRAULIC-SYSTEM**  
 THIS BUILDING IS PROTECTED BY A HYDRAULICALLY DESIGNED AUTOMATIC SPRINKLER SYSTEM.  
**LOCATION:** SIXTH FLOOR  
**WET SYSTEM**  
 No. OF SPRINKLERS: 5  
**BASIS OF DESIGN:** .10  
 1. DESIGN (GPM/SQ.FT.)  
 2. DESIGNED AREA OF PROTECTION (SQ.FT.)  
**SYSTEM DEMAND:** 343.00 GPM  
 1. WATER FLOW RATE AT 109.67 PSI  
 2. RESIDUAL PRESSURE AT 109.67 PSI  
 BASE OF RISERS

**FIRE SPRINKLER PLAN - SIXTH FLOOR**  
 SCALE: 1/8"=1'-0"  
 AREA PROTECTED: 3,430 SQ.FT.  
 FINISH FLOOR ELEVATION: 109.67'  
 COLOR CODE:

Symbol	Count	Thread	SI#	K-FACTOR	TEMP	Description	Note
○	36	1/2"	RA1414	5.6	200°	RELIABLE MODEL FTR#66 WHITE PENDENT W/WHITE RECESSED ESC.	ON DROP
●	4	1/2"	RA1414	5.6	200°	RELIABLE MODEL FTR#66 WHITE PENDENT W/WHITE RECESSED ESC.	ABOVE / BELOW
○	14	1/2"	RA4454	5.6	212°	RELIABLE MODEL KFR-COS COMBUSTIBLE CONCEALED SPACE UPRIGHT	ON LINE
○	2	3/4"	RA882	8.0	200°	RELIABLE MODEL FTR#66 BRASS HORIZONTAL SIDEWALL	ON LINE
○	2	1/2"	RA1414	5.6	200°	RELIABLE MODEL FTR#66 BRASS PENDENT	ON LINE

62 = Total Number of Heads SIXTH FLOOR

**HYDRAULIC DATA NAMEPLATE**  
 TO BE MOUNTED AT SYSTEM RISER  
 INDICATES HYDRAULIC REFERENCE POINTS.

**GENERAL NOTES**

SPRINKLER SYSTEM INSTALLATION TO COMPLY WITH NFPA 13 (2016) AND NFPA 14 (2013).  
 SPRINKLER SYSTEM AND WET SYSTEM BRANCH LINE PIPING TO BE BLACK STEEL.  
 SCHEDULE 40 JOINED BY THREADED DOUBLE ROW FITTINGS.  
 FOR SYSTEM AND SAMPLE MAIN PIPING TO BE BLACK STEEL SCHEDULE 40 WITH GROoved ENDS & WELDED OUTLETS JOINED BY MECHANICAL COUPLERS.  
 TWO THIRD SIX FLOOR CONCEALED WET SYSTEM 1" THEN 2" PIPING TO BE CPVC PLASTIC.  
 OWNER TO PROVIDE SUFFICIENT HEAD THROUGHOUT BUILDING TO PROVIDE PRESSURE OF WATER FILLED SPRINKLER PIPING & EQUIPMENT (MIN 40' P) EXCEPT FOR BRACKEN AND FIFTH FLOOR PARKING LEVELS.

**REVISIONS**

NO.	DATE	DESCRIPTION
1		

**REQUIRED APPROVALS**

OWNER / ARCHITECT	STATE FIRE MARSHAL	PORTLAND FIRE DEPARTMENT
DRAWN BY: GPD	CHECKED BY: JMD	CONTRACTOR LICENSE # 101
WEEK LEVEL: III	CERT # 118803	CONTRACTOR REG # 839

**LUMINATO CONDOMINIUMS**  
 167 NEWBURY ST., PORTLAND, MAINE  
 CONTRACT WITH: LANOIR / FRENCH CONSTRUCTION CO.

**EASTERN FIRE PROTECTION**  
 AUBURN/LEWISTON INDUSTRIAL  
 AUBURN, MAINE 04210

**FIRE SPRINKLER PLANS & DETAILS**  
 DWG. NO. 3 OF 3  
 JOB NUMBER AU-5537-16  
 SCALE AS NOTED  
 DATE 12-2-16