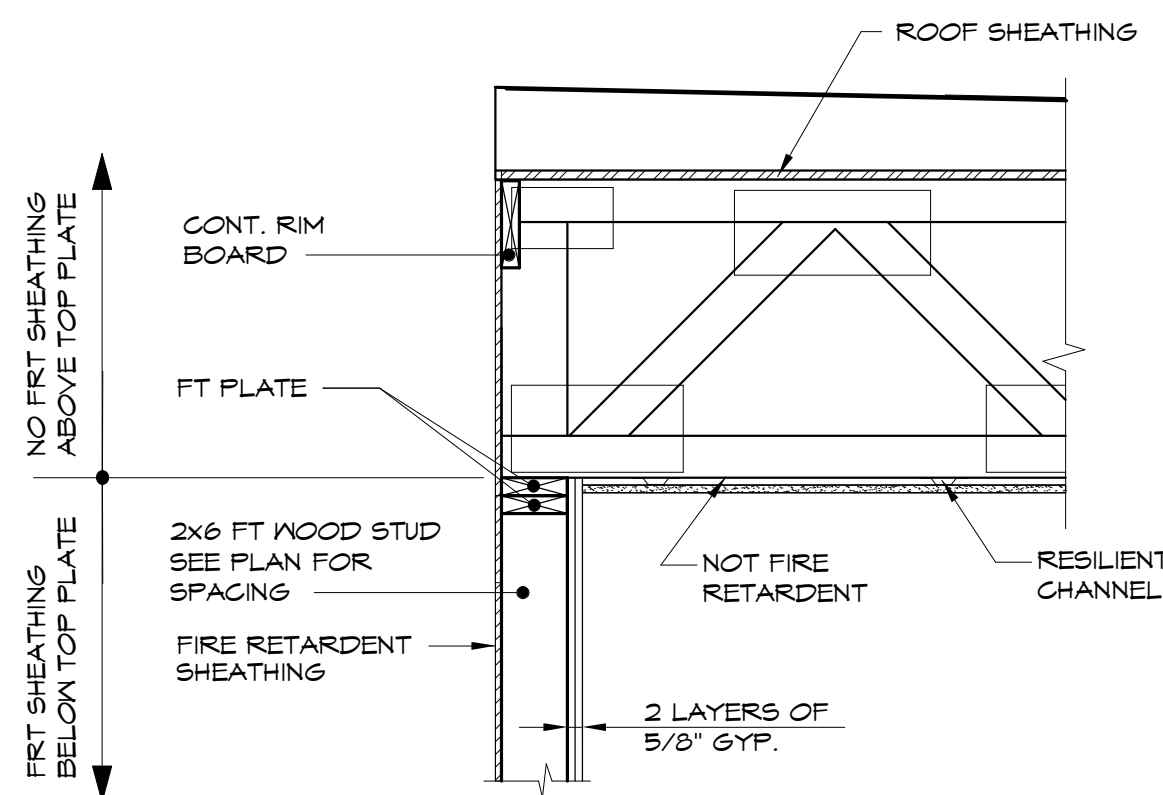


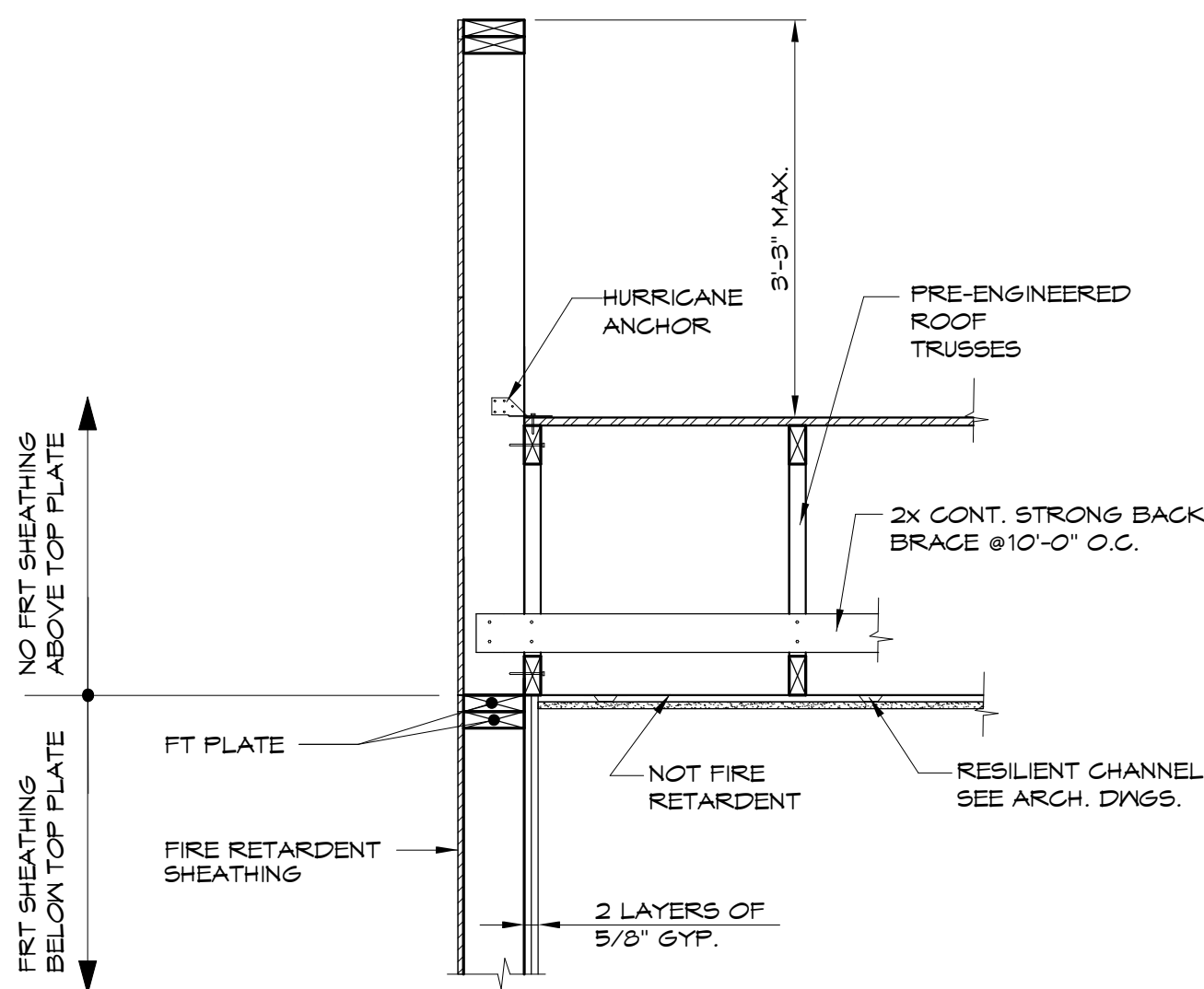
FIRE TREATED WOOD (FT) SHALL BE TREATED W/ "PYRO-GUARD" SPF No. 1/ No. 2 OR BETTER	
UNTREATED	TREATED
Fb = 875 psi	Fb = 691 psi
Fc = 1150 psi	Fc = 977 psi
E = 1.4 x 10 ⁶ psi	E = 1.246 x 10 ⁶ psi
Fv = 135 psi	Fv = 116 psi
FIRE TREATED SILL PLATES SHALL BE SYP No. 2 TREATED W/ "PYRO - GUARD PLUS"	

NOTE:
ALL NAILS INTO FIRE TREATED MATERIAL
MUST BE STAINLESS STEEL, GALVANIZED
OR OTHER APPROVED COATING.

1
3/4" = 1'-0"

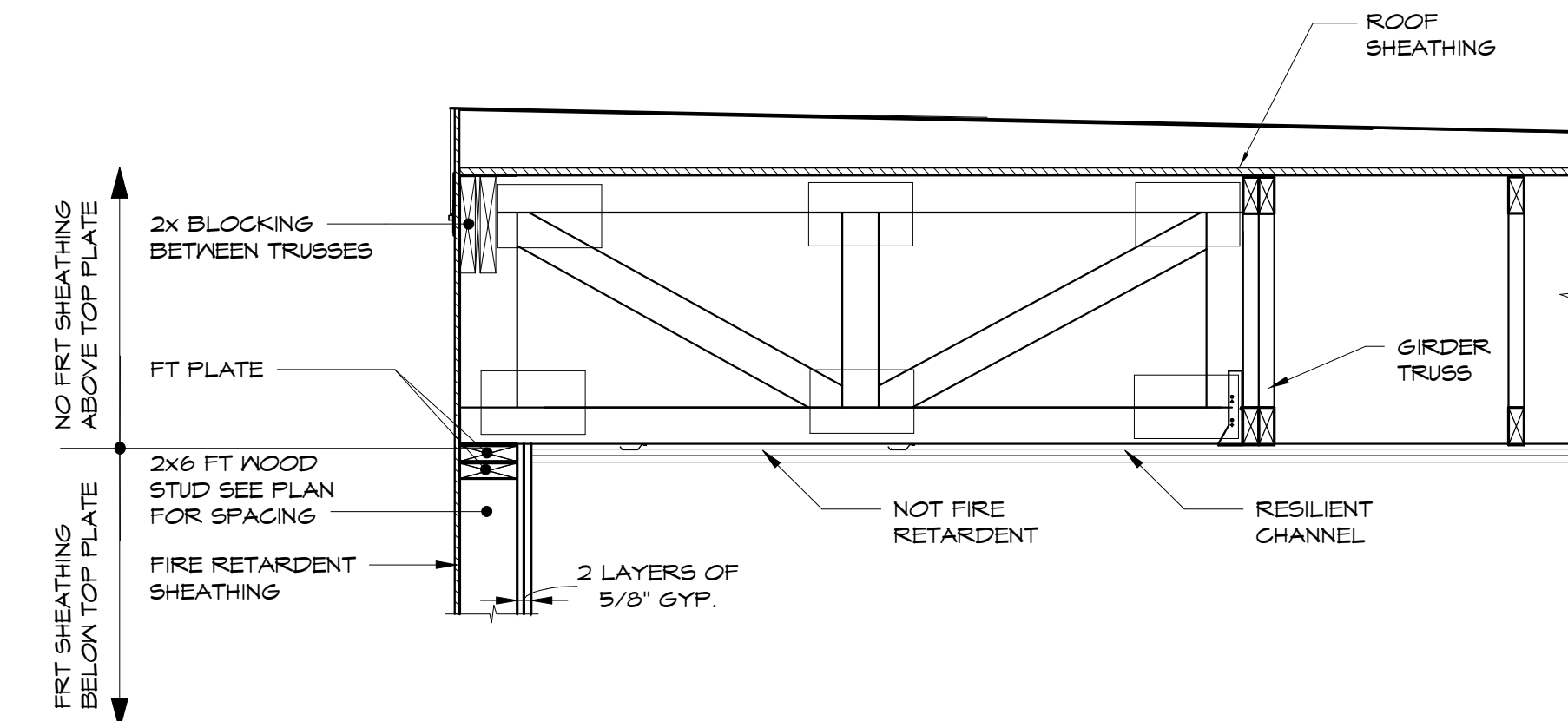
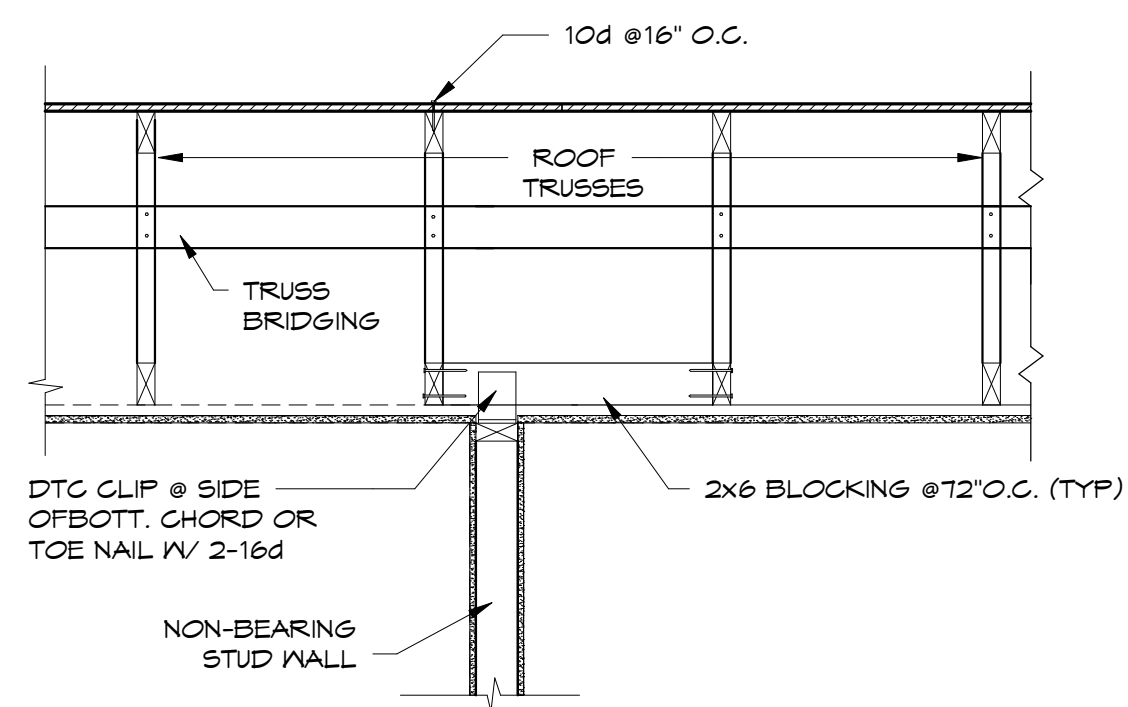


5
3/4" = 1'-0"



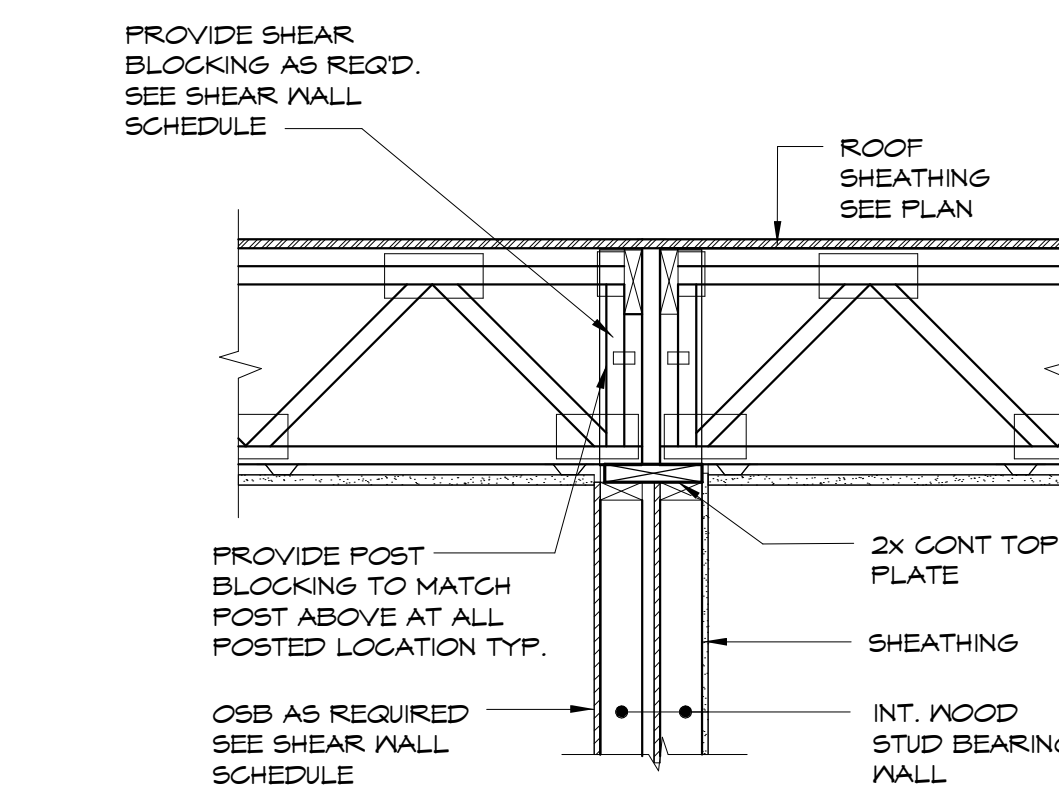
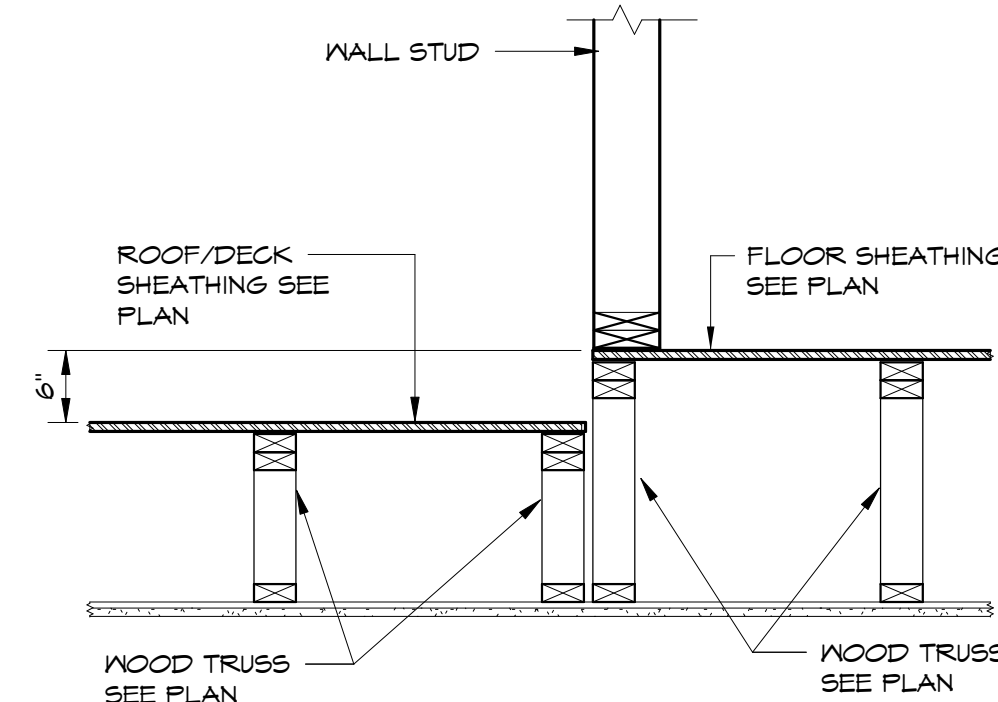
9
3/4" = 1'-0"

2
3/4" = 1'-0"



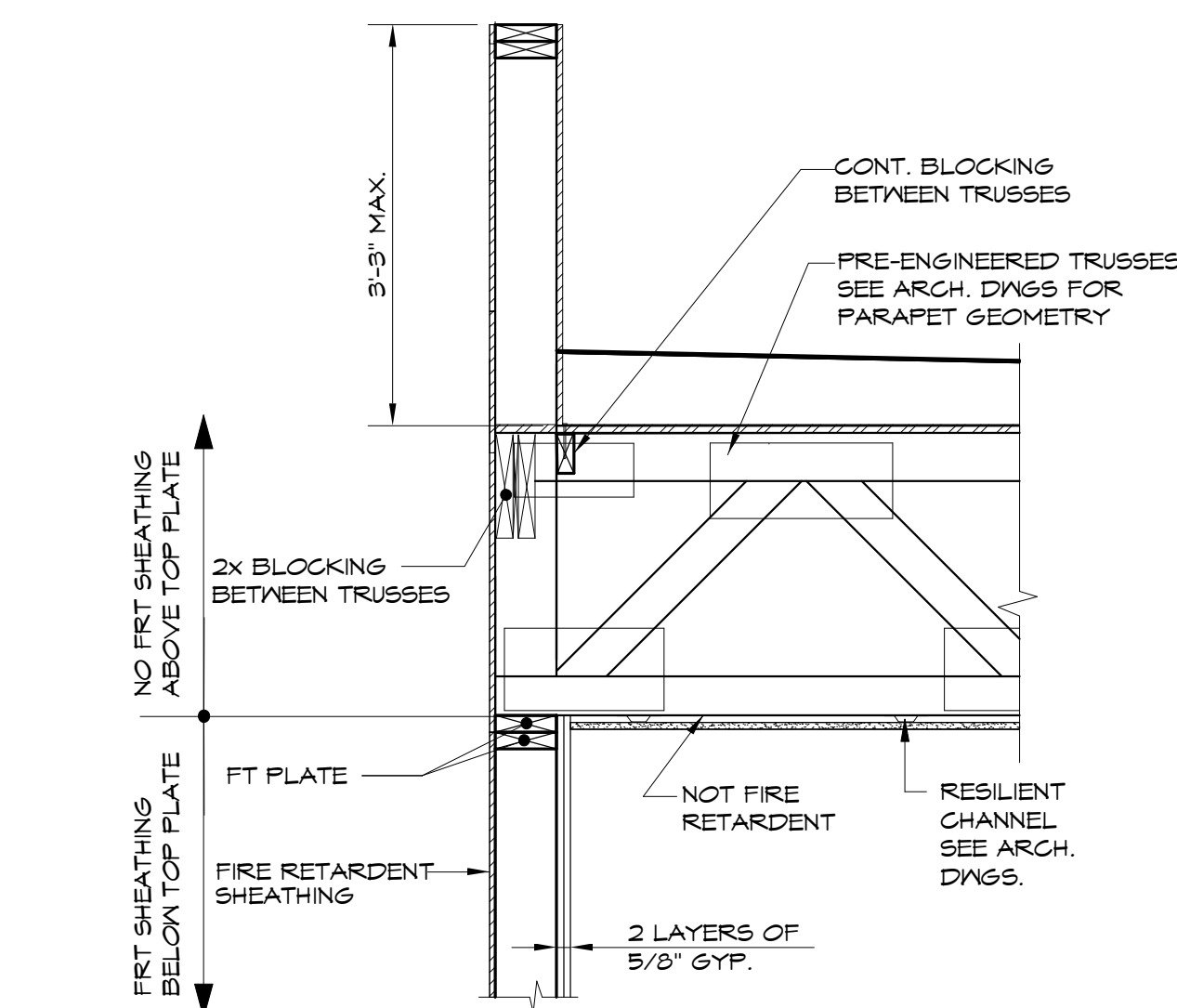
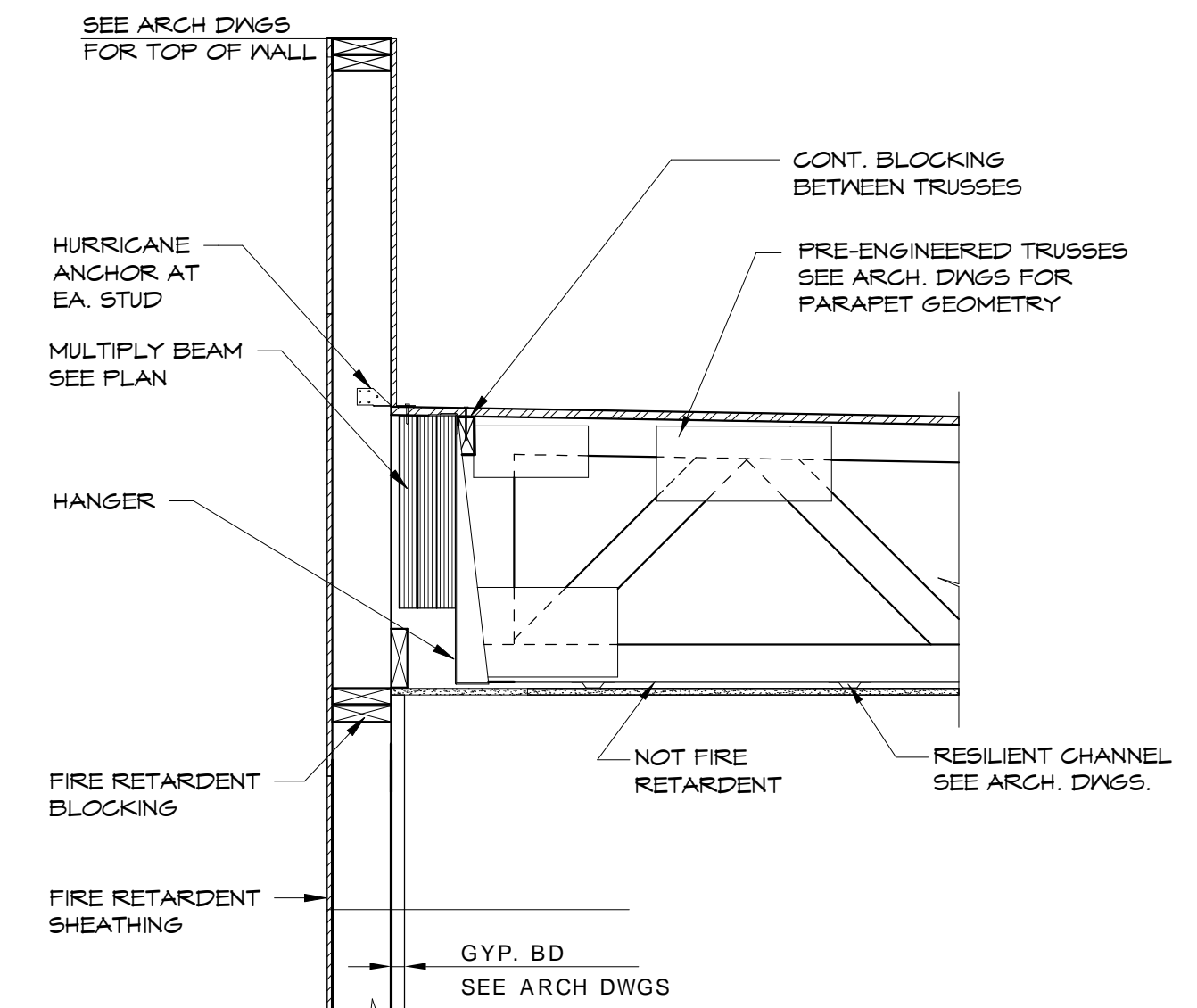
6
3/4" = 1'-0"

3
3/4" = 1'-0"

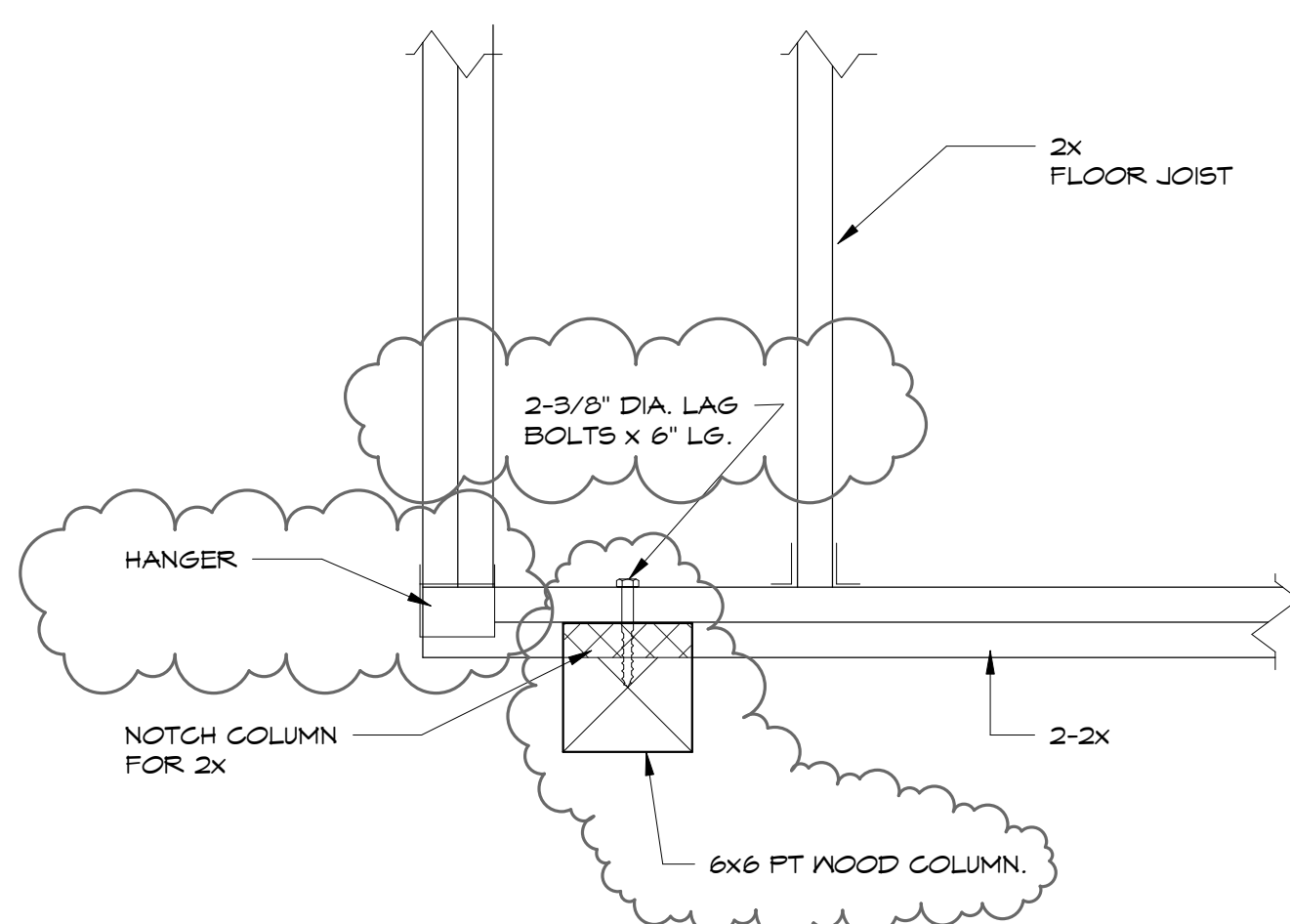


7
3/4" = 1'-0"

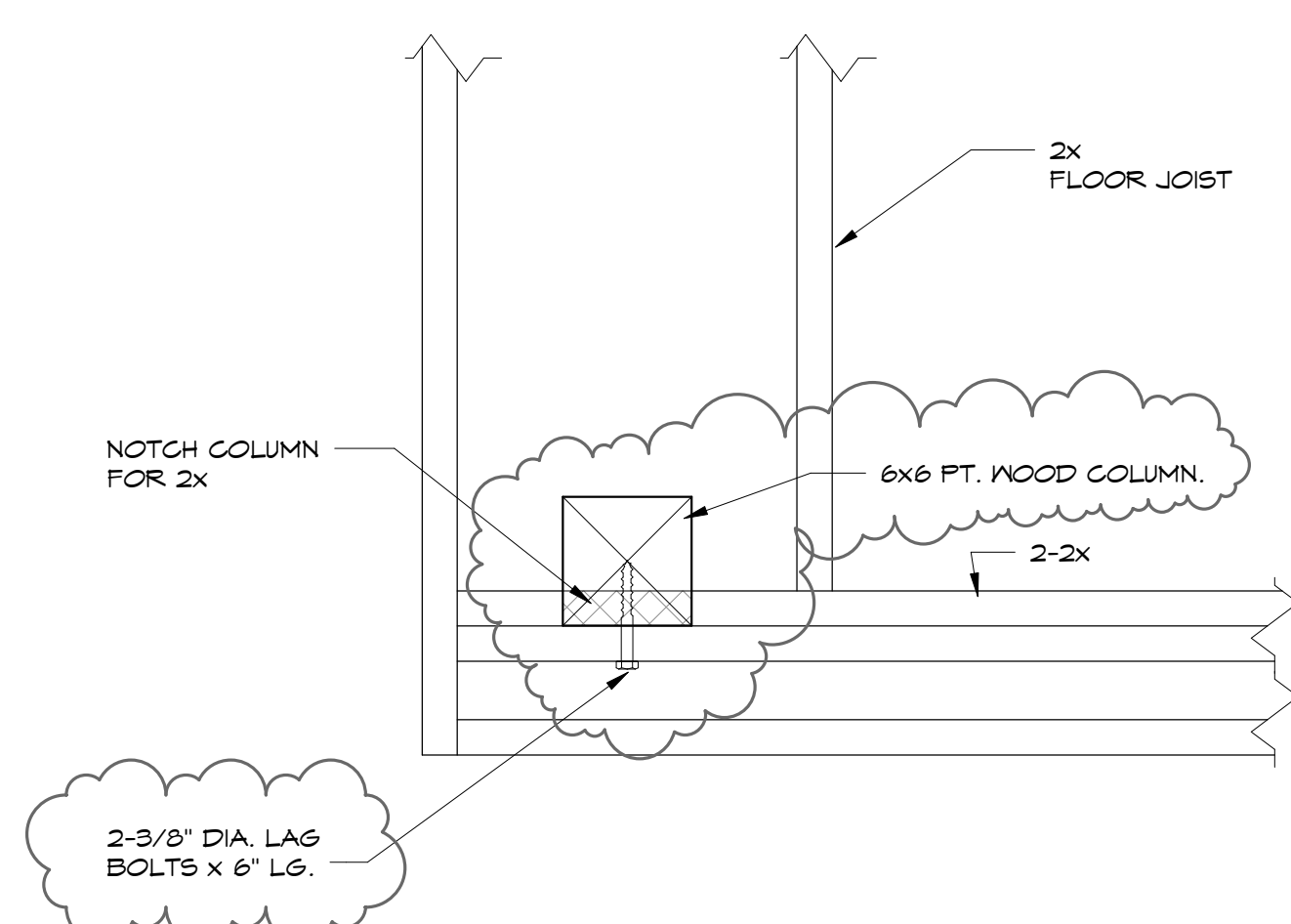
4
3/4" = 1'-0"



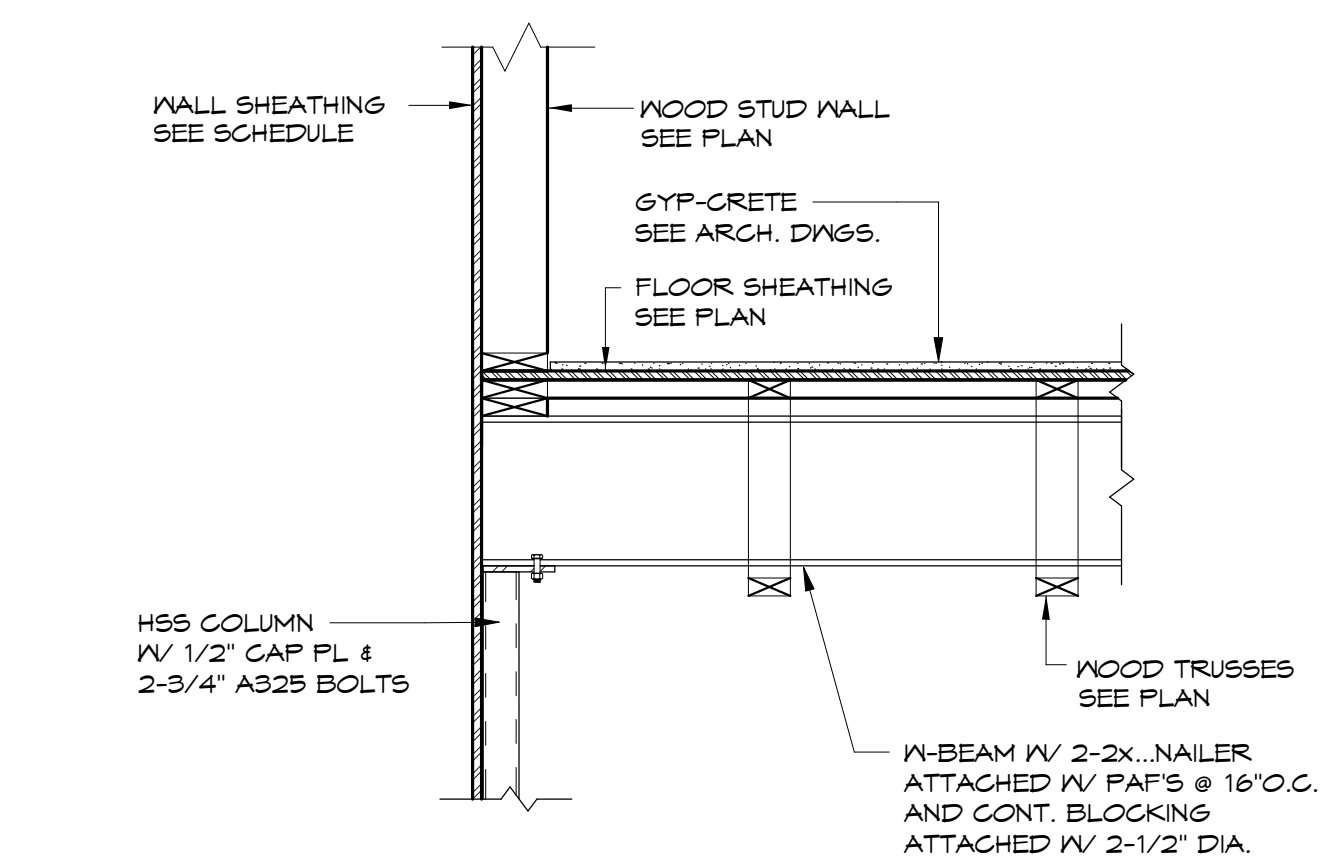
8
3/4" = 1'-0"



10
1 1/2" = 1'-0"



11
1 1/2" = 1'-0"



12
3/4" = 1'-0"

Prepared For: **NewHeight Group**
118 Congress Street, Unit 401
Portland, Maine

Consulting Engineer: **VEITAS VEITAS** engineers
638 Granite Street, Suite 101
Beverly, Massachusetts 02184
TEL: (978) 686-2800 FAX: (978) 686-2805

Architect: **ARCHETYPE** architects
48 Union Wharf Portland, Maine 04101
(207) 775-6022 ARCHETYPE@ARCHETYPEPA.COM

Project: **LUMINATO**
Newbury Street Portland, Maine

Revisions:

05/16/16	FOUNDATION PERMIT
06/07/16	80% REVIEW DRAWINGS
06/24/16	100% STRUCTURAL DRAWINGS
07/20/16	100% CONSTRUCTION DRAWINGS
08/05/16	ADDENDUM #A

Date: 04/19/16
Scale: As indicated
WOOD FRAMING DETAILS

S602