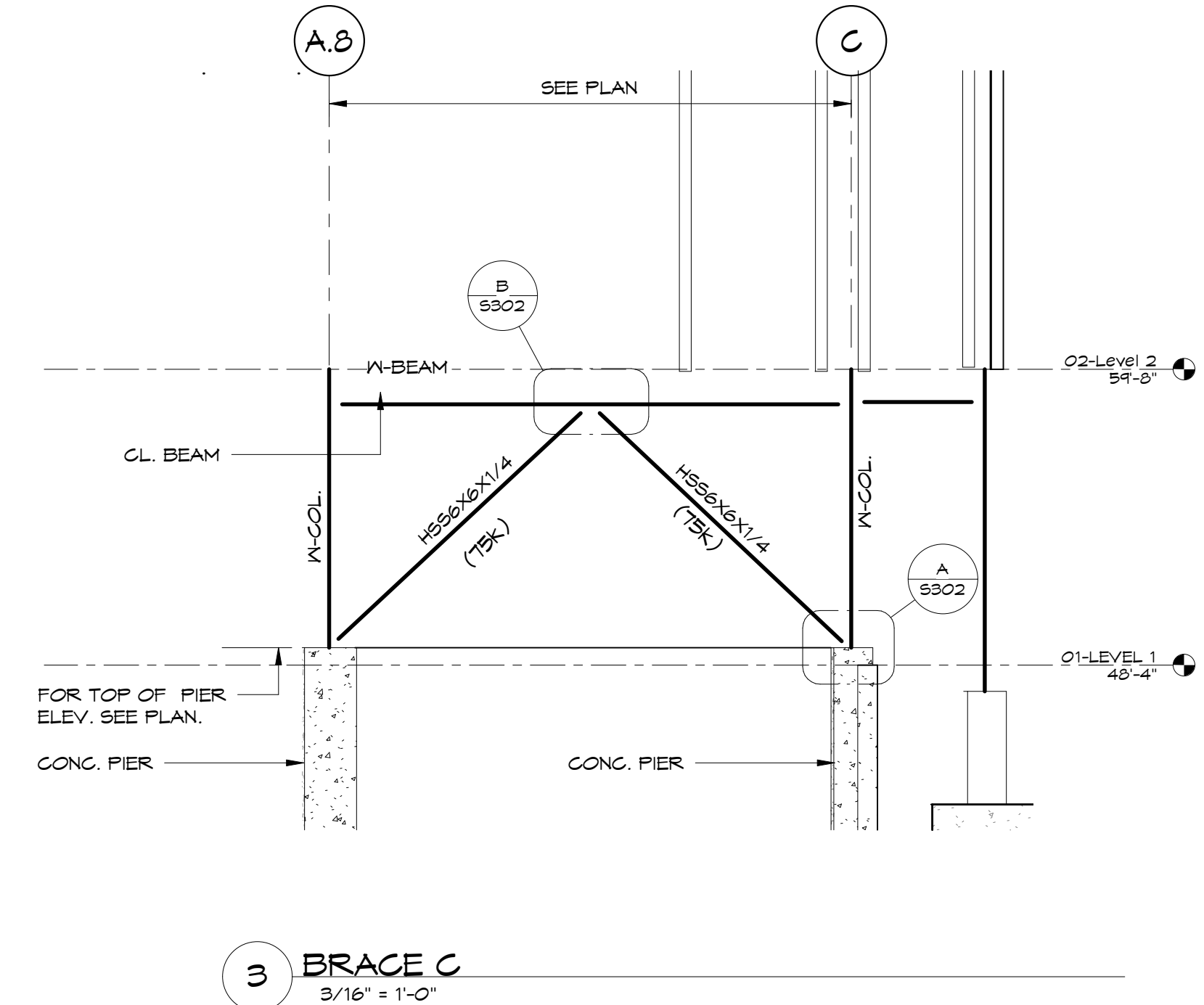
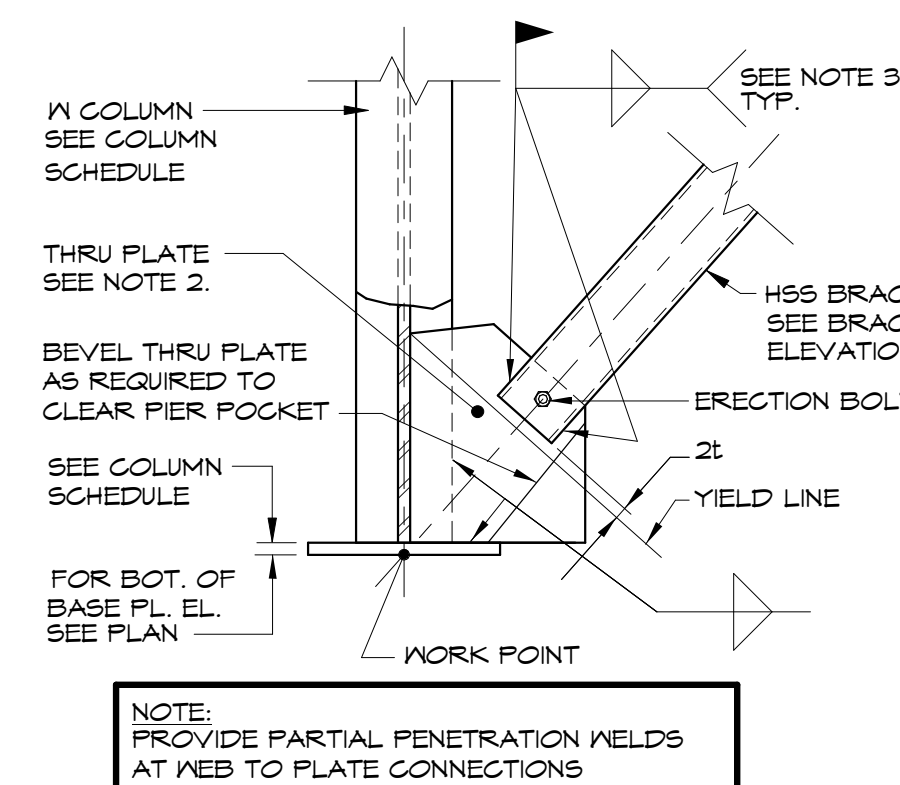


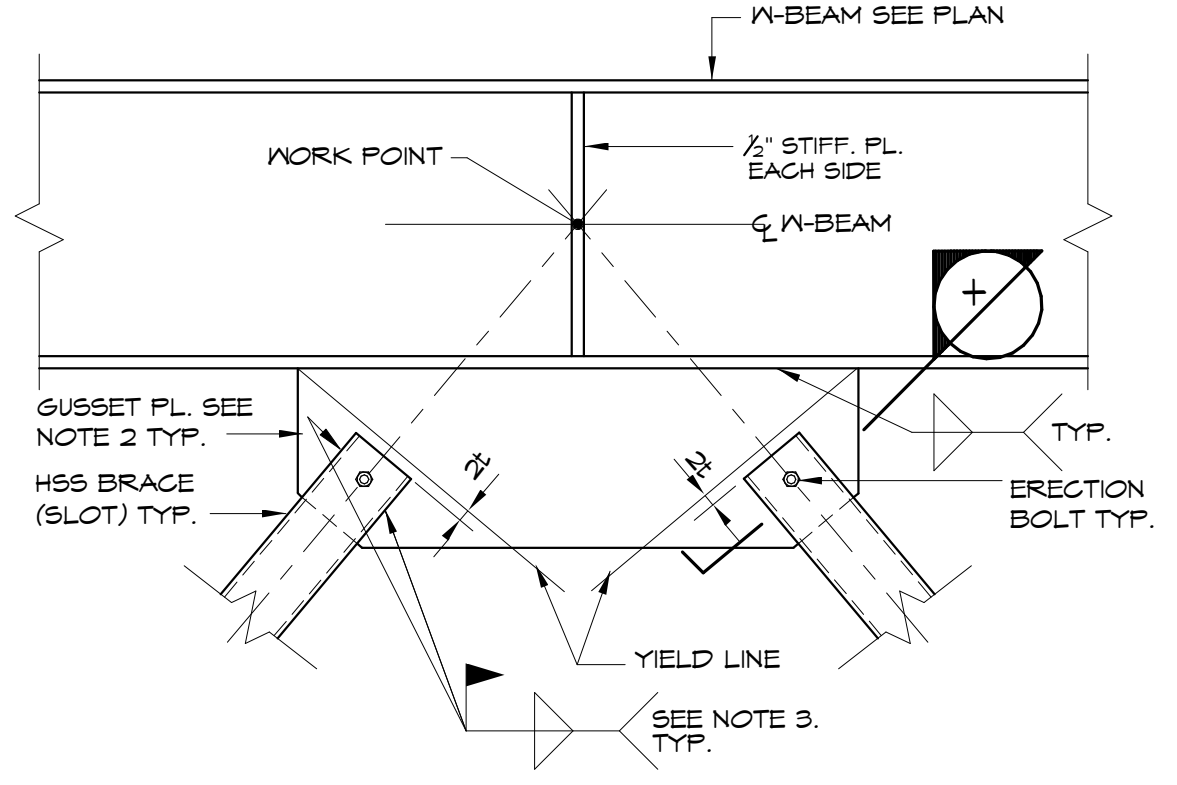
1 BRACE A  
3/16" = 1'-0"



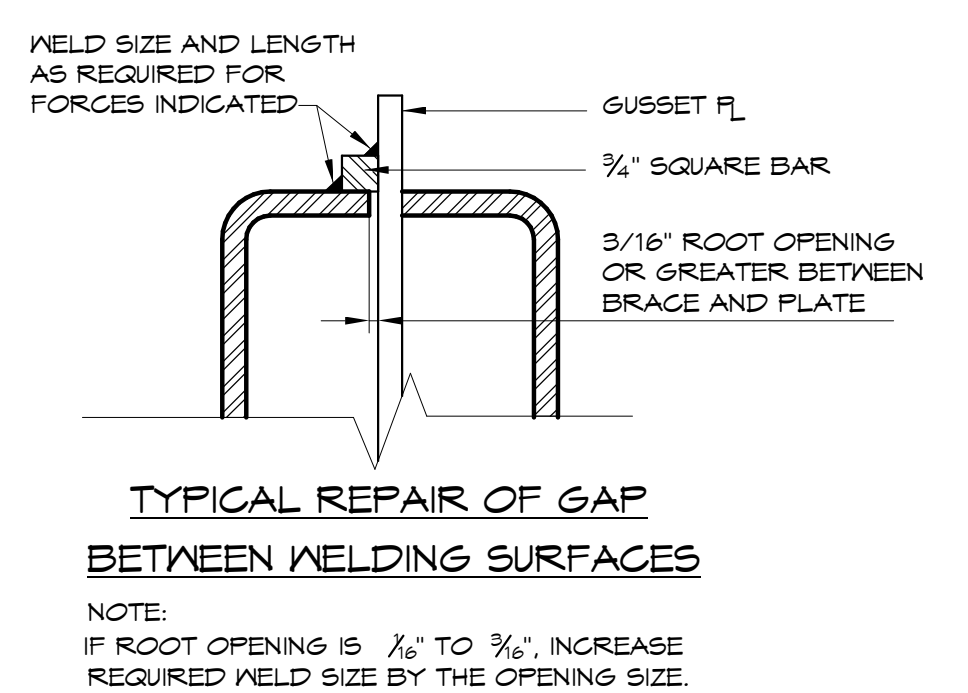
3 BRACE C  
3/16" = 1'-0"



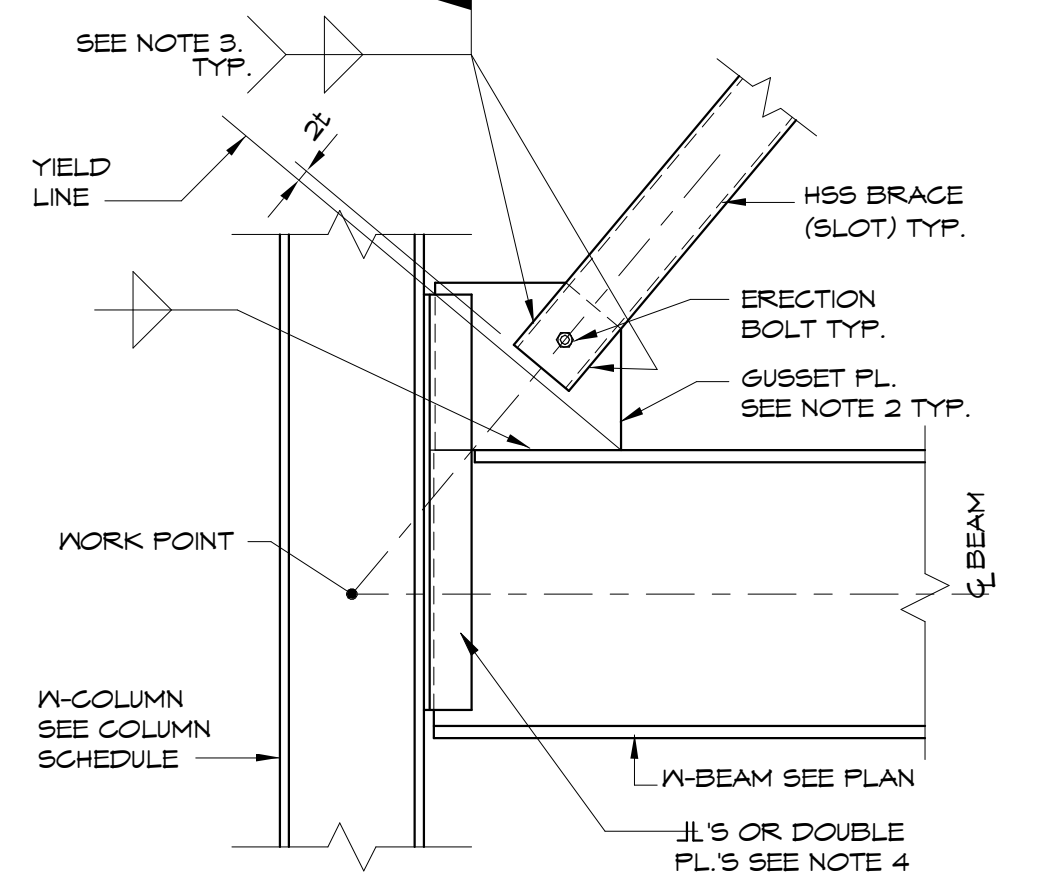
A DETAIL  
3/4" = 1'-0"



B DETAIL  
3/4" = 1'-0"



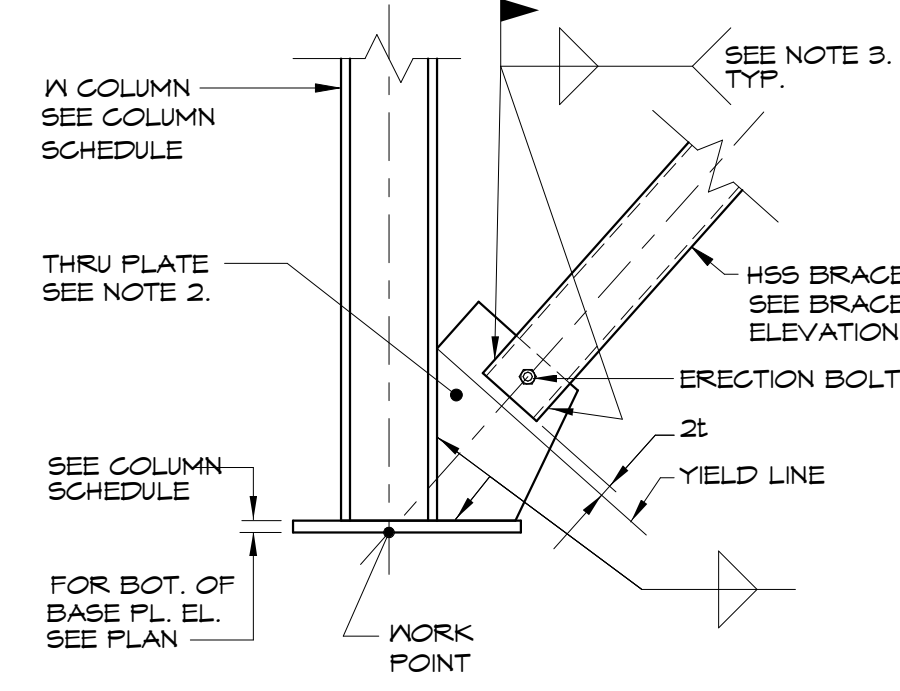
TYPICAL REPAIR OF GAP BETWEEN WELDING SURFACES



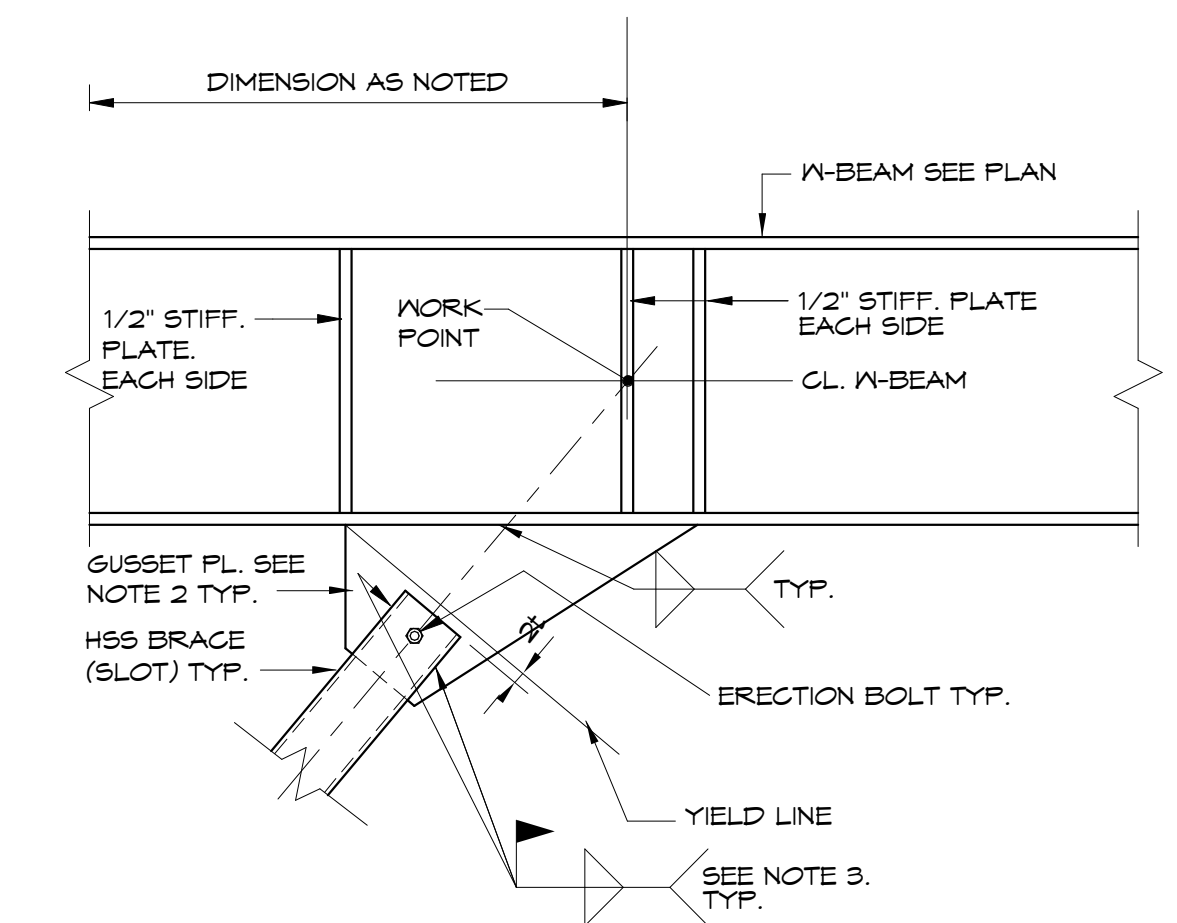
C DETAIL  
3/4" = 1'-0"

NOTE  
(105K) ETC. INDICATES FACTORED (LRFD) AXIAL FORCE IN THE BRACE MEMBERS FOR THE USE IN CONNECTION DESIGN. TO CHANGE LRFD LOAD TO ASD DIVIDE LRFD BY 1.5 (LRFD/1.5=ASD).

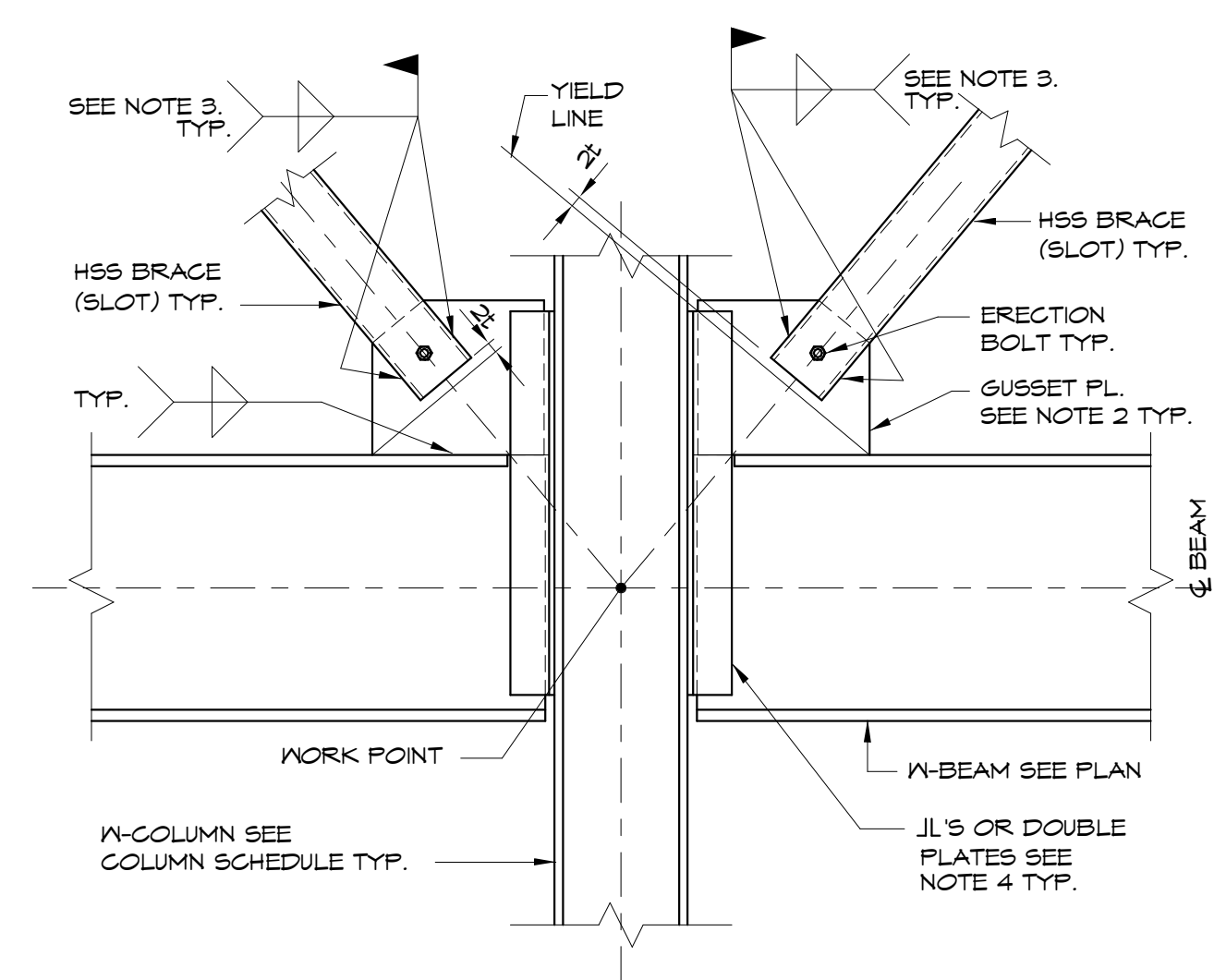
BRACE DETAIL NOTES:  
1. FOR NUMBER, SIZE AND LENGTHS OF ANCHOR BOLTS SEE BASE PLATE DETAILS  
2. ALL BRACE GUSSET PLATES TO BE 1/2" THICK MIN.  
3. DETAILER TO PROVIDE SIZE AND LENGTH OF FIELD FILLET WELDS OF HSS BRACE TO PLATES ON THE ERECTION DRAWINGS.  
4. SHEAR CAPACITY OF CONNECTION TO BE BRACING LOAD PLUS BEAM SHEAR INDICATED ON PLANS.  
5. DETAILER TO REVIEW INSTALLATION OF BRACE MEMBER. SUBMIT DIAGRAM INDICATING HOW BRACE WILL FIT.



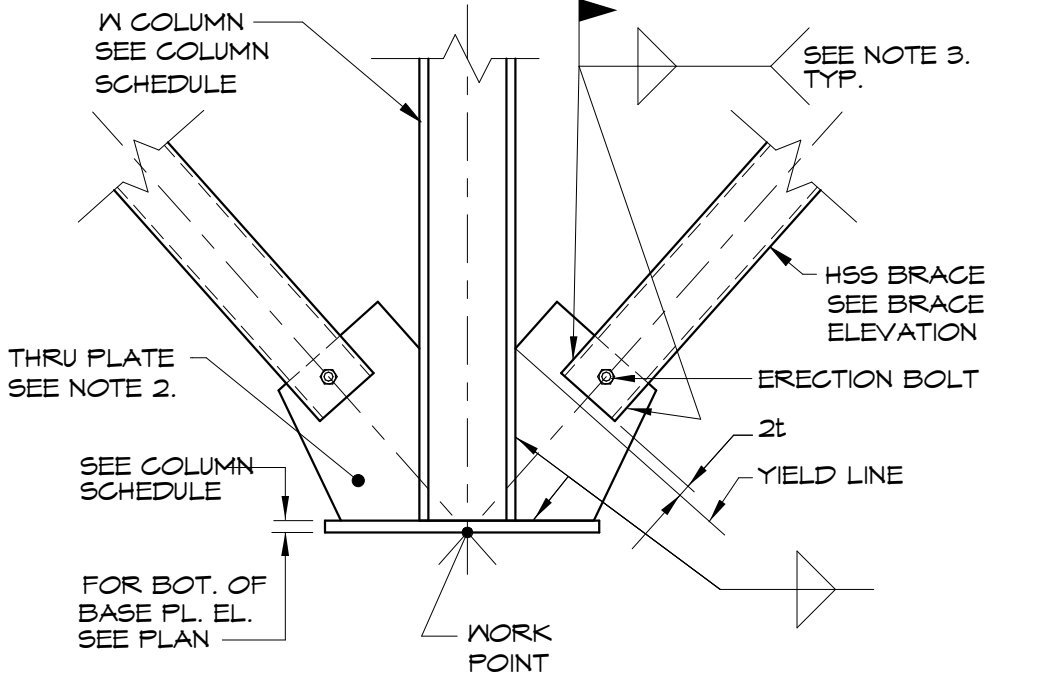
D DETAIL  
3/4" = 1'-0"



E DETAIL  
3/4" = 1'-0"



F DETAIL  
3/4" = 1'-0"



G DETAIL  
3/4" = 1'-0"

Prepared For:  
**NewHeight Group**  
118 Congress Street, Unit 401  
Portland, Maine

Consulting Engineer:  
**VEITAS VEITAS**  
engineers  
68 Granite Street, Suite 1014  
Business, Scarborough, ME 04114  
TEL: (708) 266-7444 FAX: (708) 266-2065

Architect:  
**ARCHETYPE**  
architects  
48 Union Wharf Portland, Maine 04101  
(207) 775-6022 ARCHETYPE@ARCHETYPEPA.COM

Project:  
**LUMINATO**  
Newbury Street Portland, Maine

Revisions:	FOUNDATION PERMIT
05/16/16	80% REVIEW DRAWINGS
06/07/16	100% STRUCTURAL DRAWINGS
06/24/16	100% CONSTRUCTION DRAWINGS
07/20/16	100% CONSTRUCTION DRAWINGS

Date: 04/19/16  
Scale: As indicated  
**BRACE FRAMES & DETAILS**

**S302**