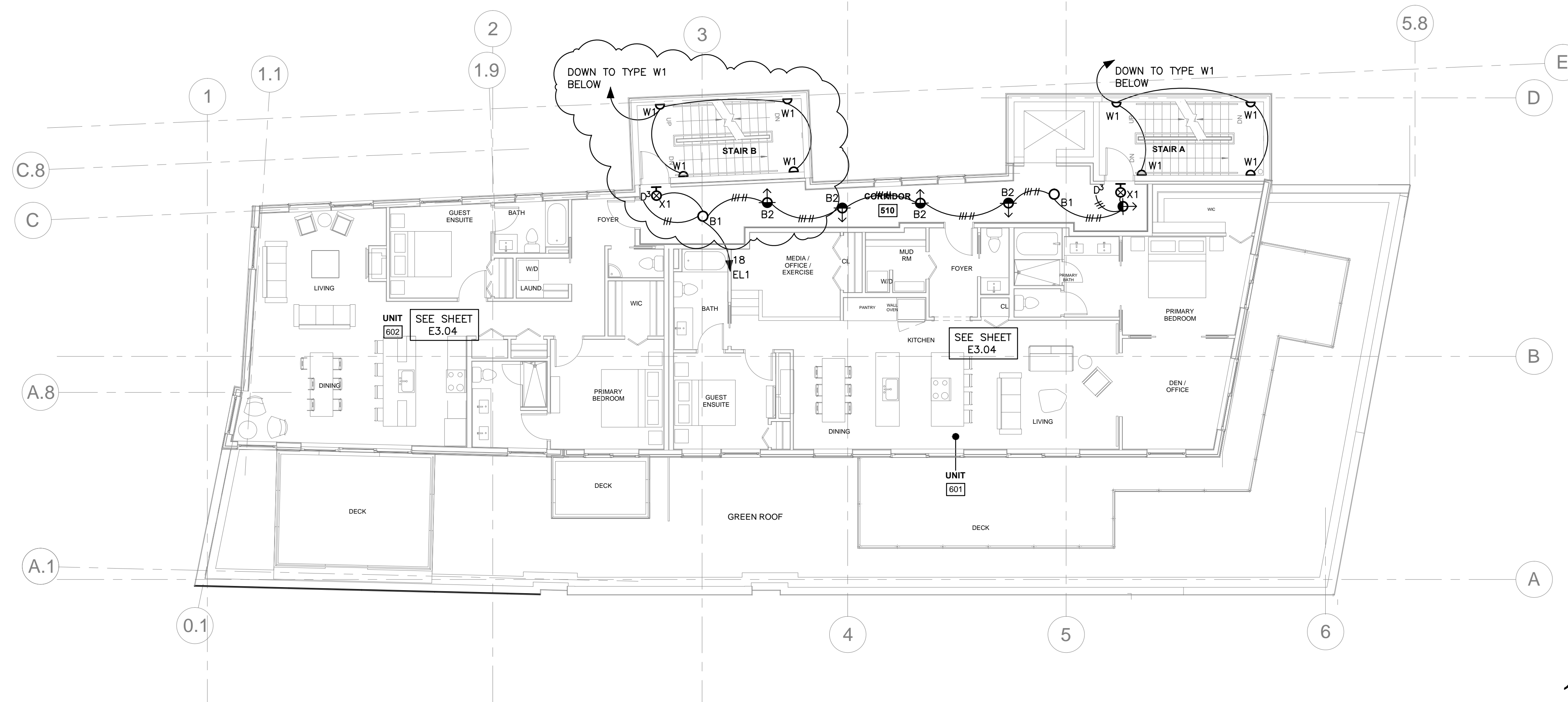


CIRCUIT TYPE S1 LIGHTS TO EL1 #18.

2 | ROOF DECK - LIGHTING
1/8" = 1'-0"



ROUTE CIRCUIT EL1 #18 THROUGH AN EMERGENCY TRANSFER DEVICE (BODINE MODEL # GTD, OR EQUAL) TO ALLOW GENERATOR EMERGENCY SUPPLY REGARDLESS OF DIMMER POSITION.

1 | SIXTH FLOOR - LIGHTING
1/8" = 1'-0"



E2.04

Date: JUNE 17 2016
Scale: AS NOTED
SIXTH FLOOR AND ROOF LIGHTING PLANS

Revisions:
06/17/16 100% REVIEW SET
07/22/16 REVISED PLANS
07/28/16 ADDENDUM A

Project: **LUMINATO**

Newbury Street Portland, Maine

Architect: **ARCHITYPE architects**
48 Union Wharf Portland, Maine 04101
(207) 772-6022 Fax (207) 772-4056

Consultant: **Bartlett Design**
ARCHITECTURAL ENGINEERING
144 HANCOCK STREET PORTLAND, ME 04101
TEL: (207) 443-3447 FAX: (207) 443-3000

Prepared For: **NewHeight Group**

STATE OF MAINE
LAWRENCE E. BARTLETT
No. 7928
LICENSED ARCHITECT
Lawrence E. Bartlett
7/28/16