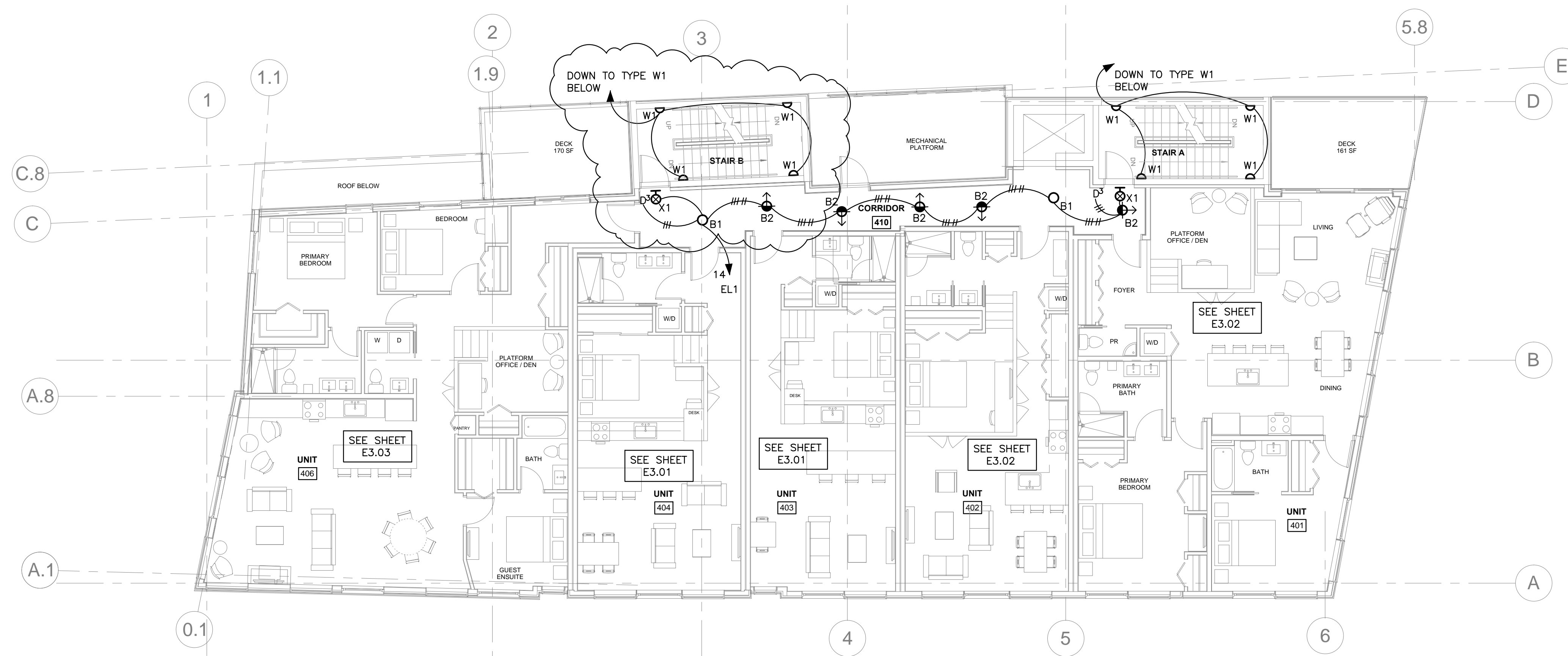




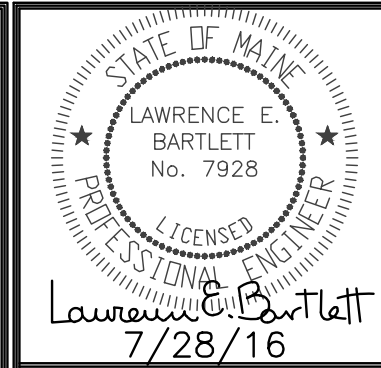
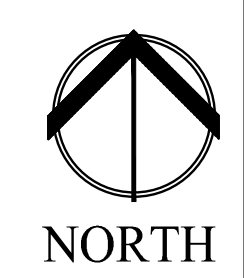
ROUTE CIRCUIT EL1 #16 THROUGH AN EMERGENCY TRANSFER DEVICE (BODINE MODEL # GTD, OR EQUAL) TO ALLOW GENERATOR EMERGENCY SUPPLY REGARDLESS OF DIMMER POSITION.

2 | FIFTH FLOOR - LIGHTING
1/8" = 1'-0"



ROUTE CIRCUIT EL1 #14 THROUGH AN EMERGENCY TRANSFER DEVICE (BODINE MODEL # GTD, OR EQUAL) TO ALLOW GENERATOR EMERGENCY SUPPLY REGARDLESS OF DIMMER POSITION.

1 | FOURTH FLOOR - LIGHTING
1/8" = 1'-0"



Prepared For:
NewHeight Group

Consultant:
Bartlett Design
ELECTRICAL ENGINEERING
144 WASHINGTON ST. PORTLAND, ME 04101
TEL: (207) 443-3447 FAX: (207) 443-3000

Architect:
ARCHITYPE
architects
48 Union Wharf Portland, Maine 04101
(207) 772-6022 Fax (207) 772-4056

Project:
LUMINATO
Newbury Street Portland, Maine

Revisions:
06/17/16 100% REVIEW SET
07/22/16 REVISED PLANS
07/28/16 ADDENDUM A

Date: **JUNE 17 2016**
Scale: **AS NOTED**
FOURTH AND FIFTH FLOOR LIGHTING PLANS

E2.03