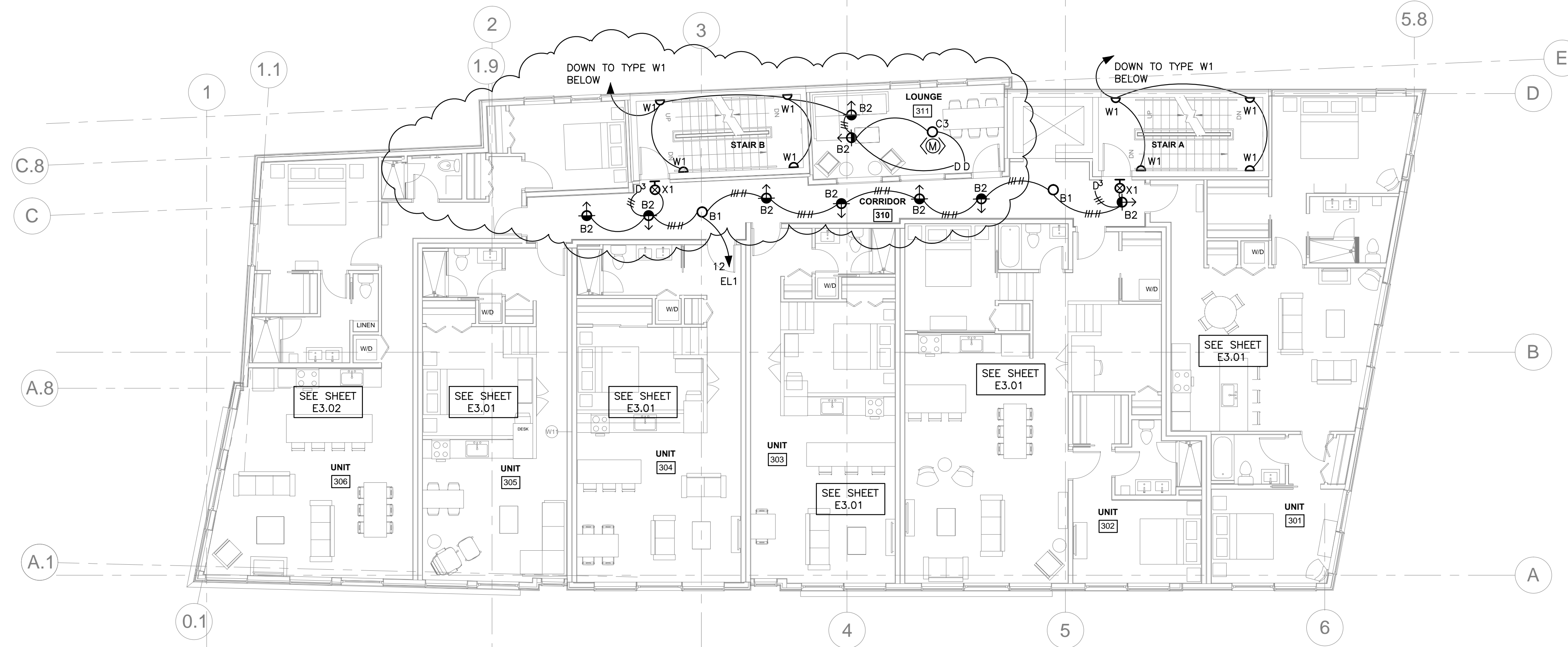
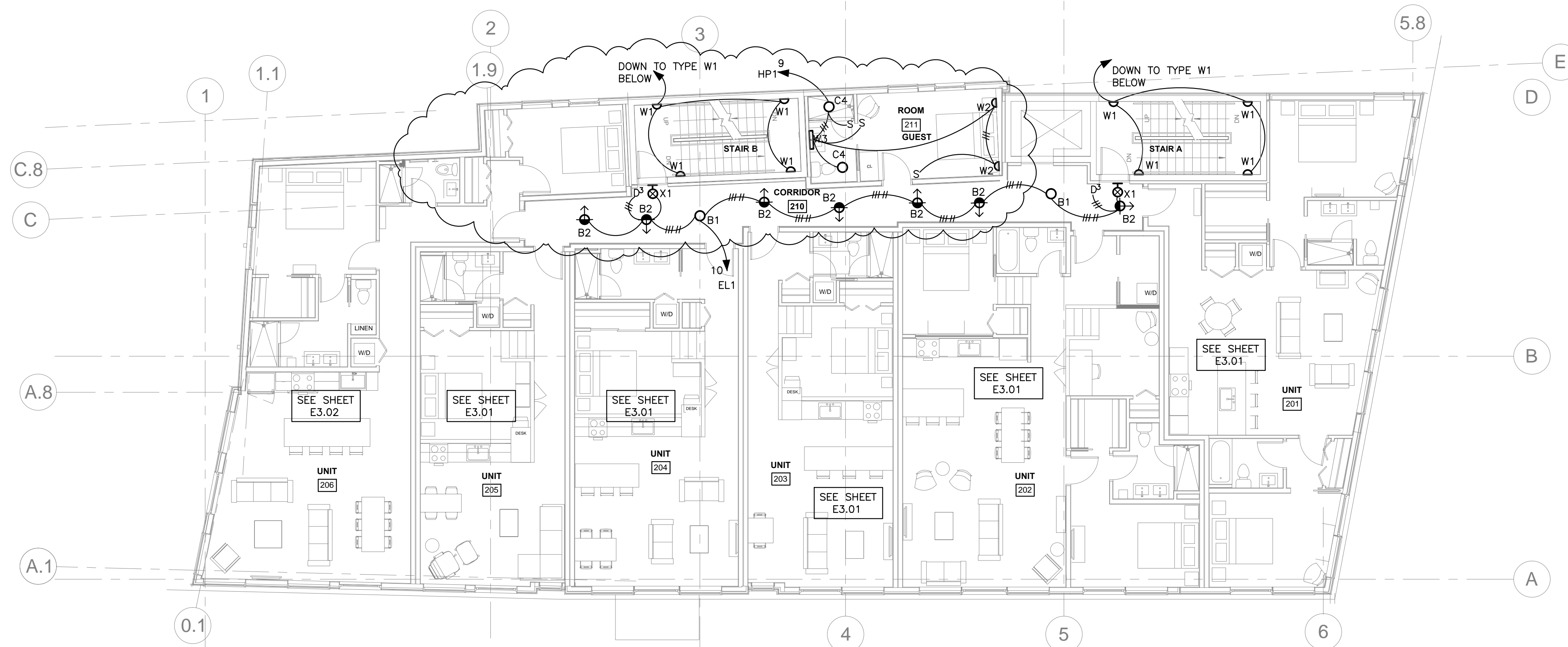


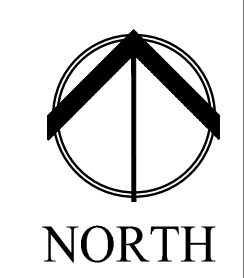
ROUTE CIRCUIT EL1 #12 THROUGH AN EMERGENCY TRANSFER DEVICE (BODINE MODEL # GTD, OR EQUAL) TO ALLOW GENERATOR EMERGENCY SUPPLY REGARDLESS OF DIMMER POSITION.



2 | THIRD FLOOR - LIGHTING
1/8" = 1'-0"



1 | SECOND FLOOR - LIGHTING
1/8" = 1'-0"



E2.02

Date: JUNE 17 2016
Scale: AS NOTED
SECOND AND THIRD FLOOR LIGHTING PLANS

Revisions:
06/17/16 100% REVIEW SET
07/22/16 REVISED PLANS
07/28/16 ADDENDUM A

Project: LUMINATO
Newbury Street Portland, Maine

Architect: ARCHITYPE architects
48 Union Wharf Portland, Maine 04101
(207) 772-6022 Fax (207) 772-4056

Consultant: Bartlett Design
ELECTRICAL ENGINEERING
144 HANCOCK STREET PORTLAND, ME 04101
TEL: (207) 448-3447 FAX: (207) 448-3000

Prepared For: NewHeight Group

