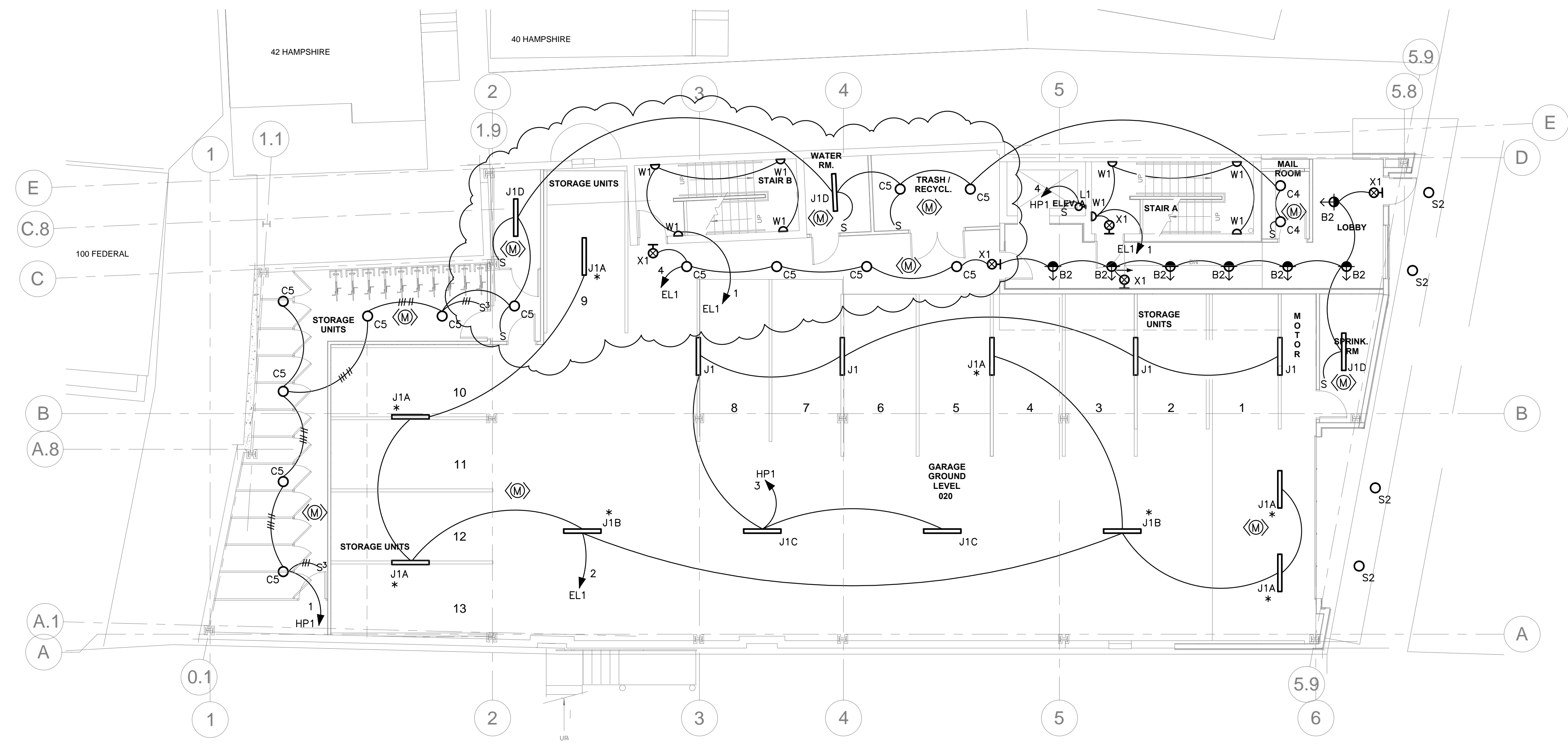


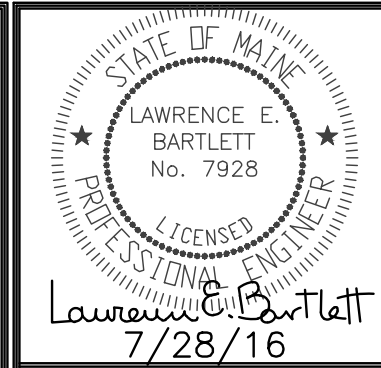
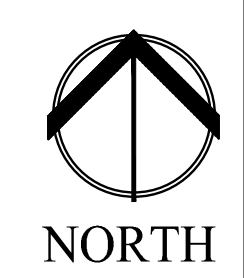
ROUTE TYPE C4 LIGHTS IN FITNESS ROOM CIRCUIT EL1 #8 THROUGH AN EMERGENCY TRANSFER DEVICE (BODINE MODEL # GTD, OR EQUAL) TO ALLOW GENERATOR EMERGENCY SUPPLY REGARDLESS OF DIMMER POSITION.  
 CIRCUIT TYPE S1, S2, S3 AND S4 LIGHTS TO PANEL HP1 # 2.  
 \* TYPE J1A AND J1B GARAGE LIGHTS TO OPERATE CONTINUOUSLY AS AN EMERGENCY NIGHT LIGHT (ALL OTHER TYPE J1 AND J1C GARAGE LIGHTS TO BE CONTROLLED BY INTEGRAL MOTION SENSORS).

2 | FIRST FLOOR - LIGHTING  
 1/8" = 1'-0"



CIRCUIT TYPE S2 LIGHTS TO PANEL HP1 # 2.  
 \* TYPE J1A AND J1B GARAGE LIGHTS TO OPERATE CONTINUOUSLY AS AN EMERGENCY NIGHT LIGHT (ALL OTHER TYPE J1 AND J1C GARAGE LIGHTS TO BE CONTROLLED BY INTEGRAL MOTION SENSORS).

1 | BASEMENT - LIGHTING  
 1/8" = 1'-0"



Prepared For:  
**NewHeight Group**

Consultant:  
**Bartlett Design**  
 ELECTRICAL ENGINEERING  
 441 HUNTINGTON AVENUE  
 PORTLAND, ME 04103  
 TEL: (207) 442-3447 FAX: (207) 442-3000

Architect:  
**ARCHITECTYPE**  
**architects**  
 48 Union Wharf Portland, Maine 04101  
 (207) 772-6022 Fax (207) 772-4056

Project:  
**LUMINATO**  
 Newbury Street Portland, Maine

Revisions:  
 06/17/16 100% REVIEW SET  
 07/22/16 REVISED PLANS  
 07/28/16 ADDENDUM A

Date: **JUNE 17 2016**  
 Scale: **AS NOTED**  
**BASEMENT & FIRST FLOOR LIGHTING PLANS**

**E2.01**