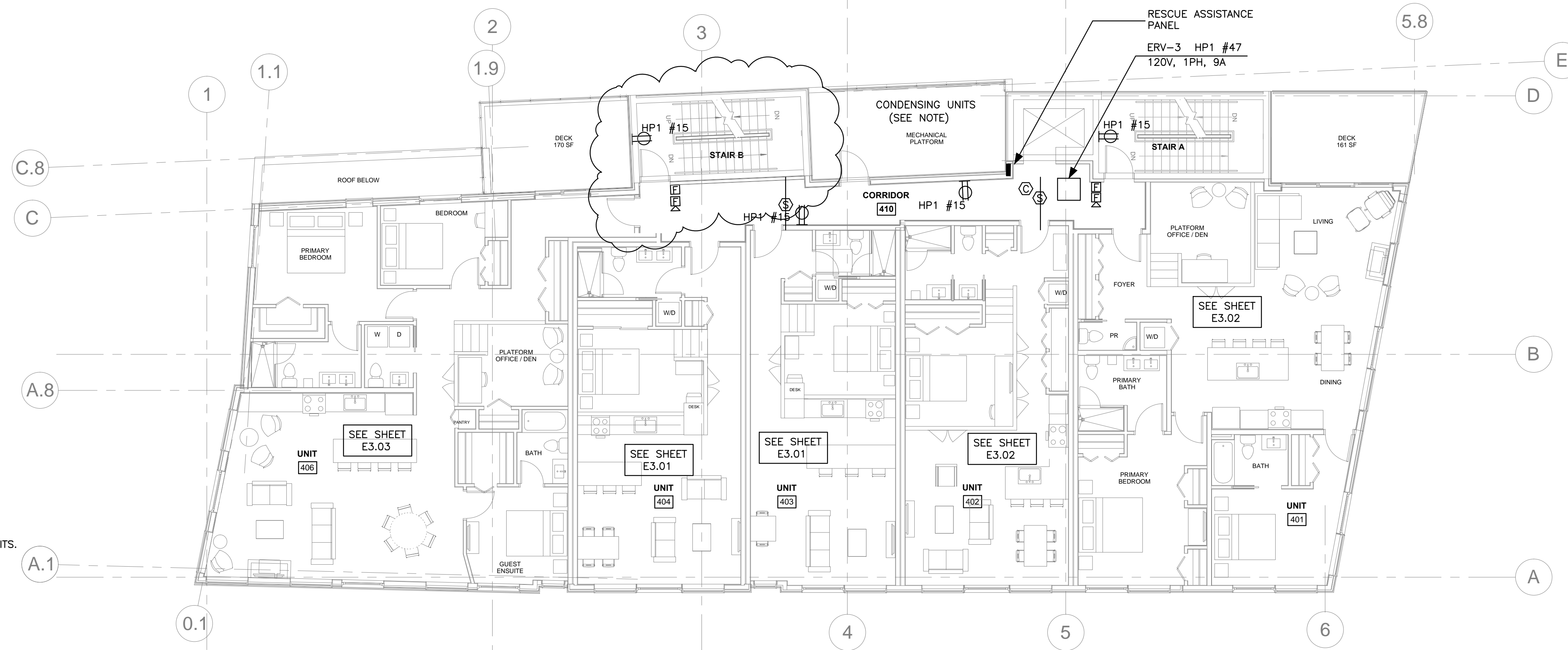


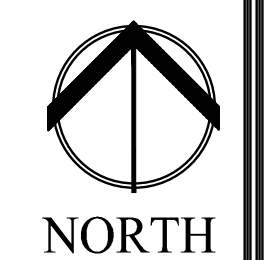
2 | FIFTH FLOOR - POWER
1/8" = 1'-0"



1 | FOURTH FLOOR - POWER
1/8" = 1'-0"

WHERE INDICATED, PROVIDE CONNECTIONS FOR 14 OUTDOOR CONDENSING UNITS. PROVIDE A 30A/2P WEATHERPROOF DISCONNECT SWITCH FOR EACH UNIT. CIRCUIT EACH CONDENSING UNIT WITH 2#10, 1#12G, IN A 3/4" CDT.

CU-01: 208V, 1PH 13.4 MCA HP1 #43,45
CU-301: 208V, 1PH 17MCA UNIT 301 LOADCENTER
CU-302: 208V, 1PH 17MCA UNIT 302 LOADCENTER
CU-303: 208V, 1PH 13.4MCA UNIT 303 LOADCENTER
CU-304: 208V, 1PH 13.4MCA UNIT 304 LOADCENTER
CU-305: 208V, 1PH 13.4MCA UNIT 305 LOADCENTER
CU-306: 208V, 1PH 17MCA UNIT 306 LOADCENTER
CU-401: 208V, 1PH 20.1MCA UNIT 401 LOADCENTER
CU-402: 208V, 1PH 13.4MCA UNIT 402 LOADCENTER
CU-403: 208V, 1PH 13.4MCA UNIT 403 LOADCENTER
CU-404: 208V, 1PH 13.4MCA UNIT 404 LOADCENTER
CU-406: 208V, 1PH 20.1MCA UNIT 406 LOADCENTER
CU-501: 208V, 1PH 20.1MCA UNIT 501 LOADCENTER
CU-502: 208V, 1PH 13.4MCA UNIT 502 LOADCENTER



Prepared For:
NewHeight Group

Consultant:
Bartlett Design
ELECTRICAL ENGINEERING
144 WASHINGTON ST. PORTLAND, ME 04101
TEL: (207) 442-5447 FAX: (207) 442-5000

Architect:
ARCHITECTYPE architects
48 Union Wharf Portland, Maine 04101
(207) 772-6022 Fax (207) 772-4056

Project:
LUMINATO
Newbury Street Portland, Maine

Revisions:
06/17/16 100% REVIEW SET
07/22/16 REVISED PLANS
07/28/16 ADDENDUM A

Date: JUNE 17 2016
Scale: AS NOTED
FOURTH AND FIFTH FLOOR POWER PLANS

E1.03