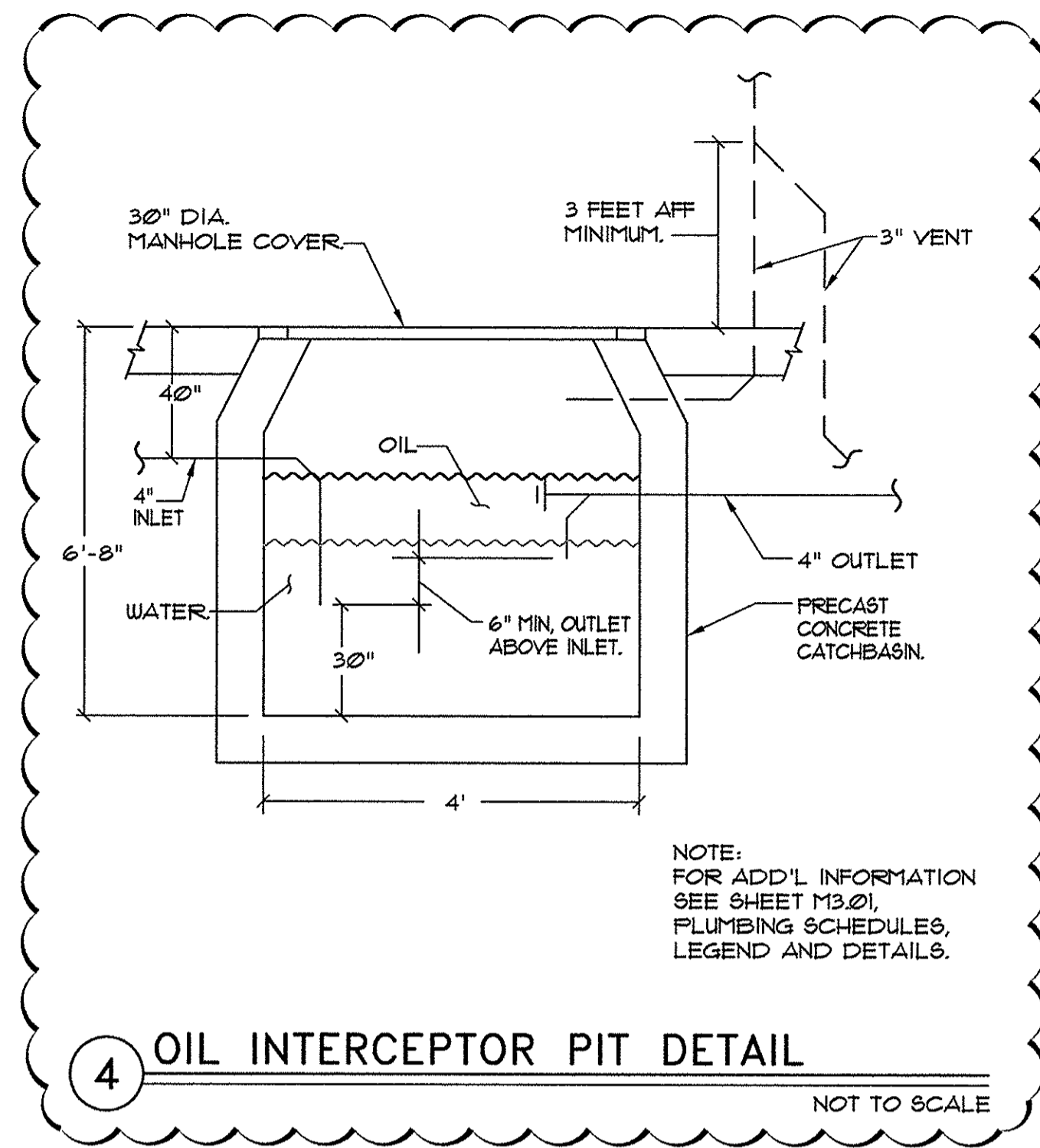
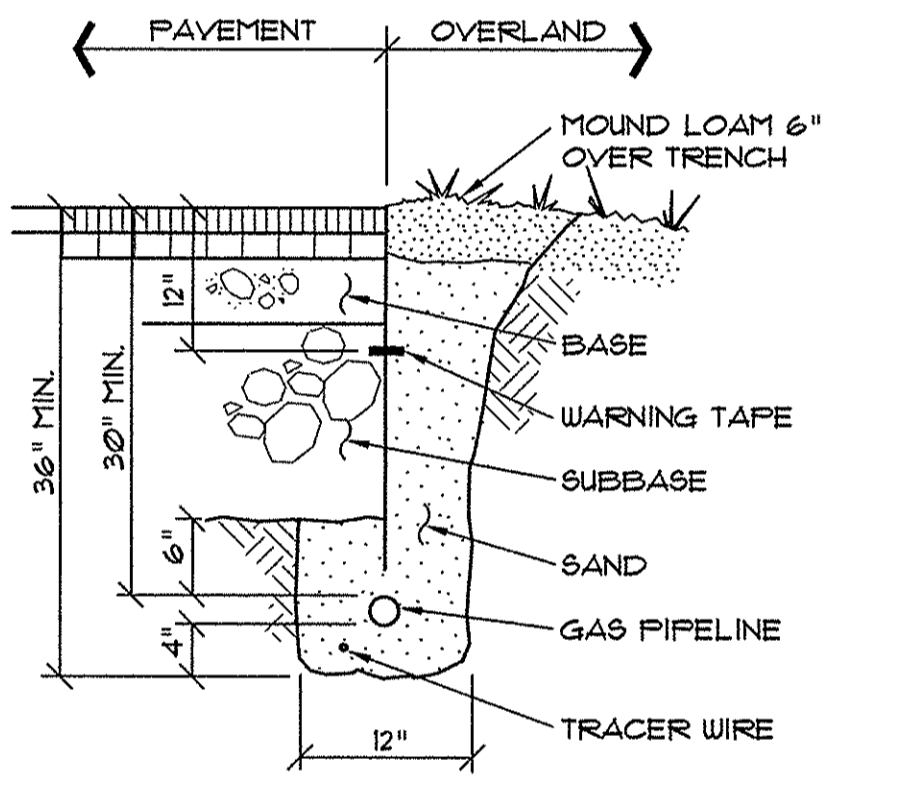


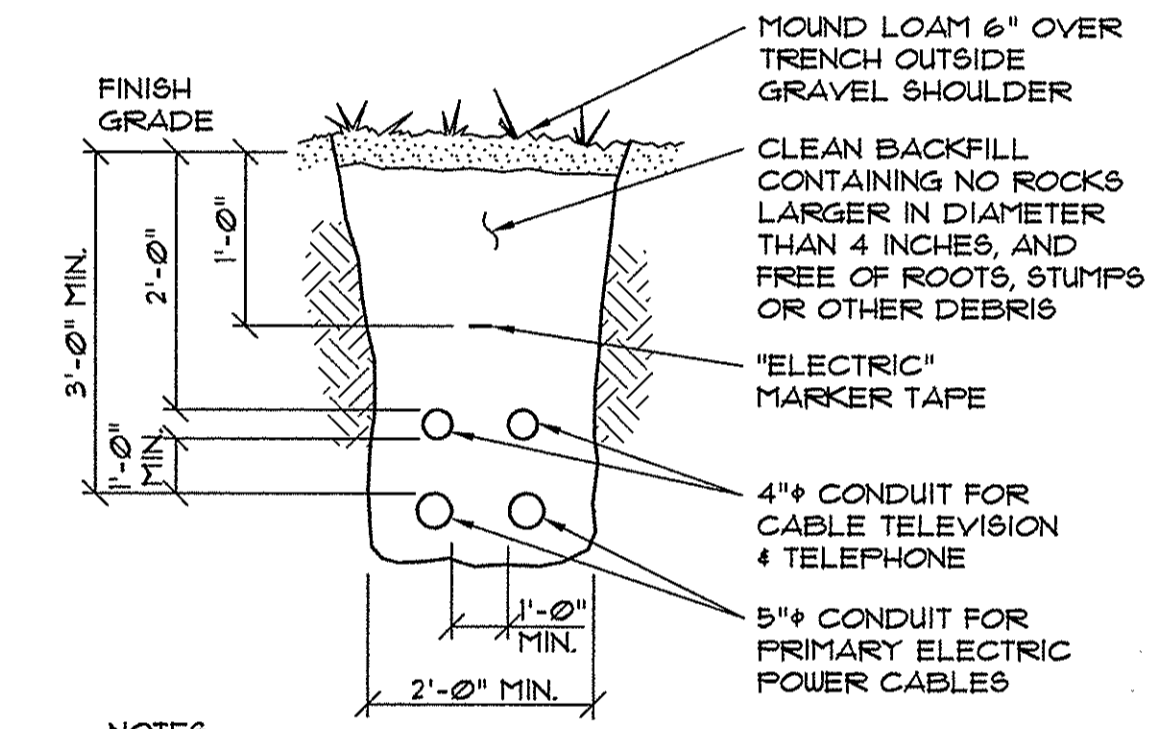
5 CATCHBASIN #1 SECTION (II-2) NOT TO SCALE



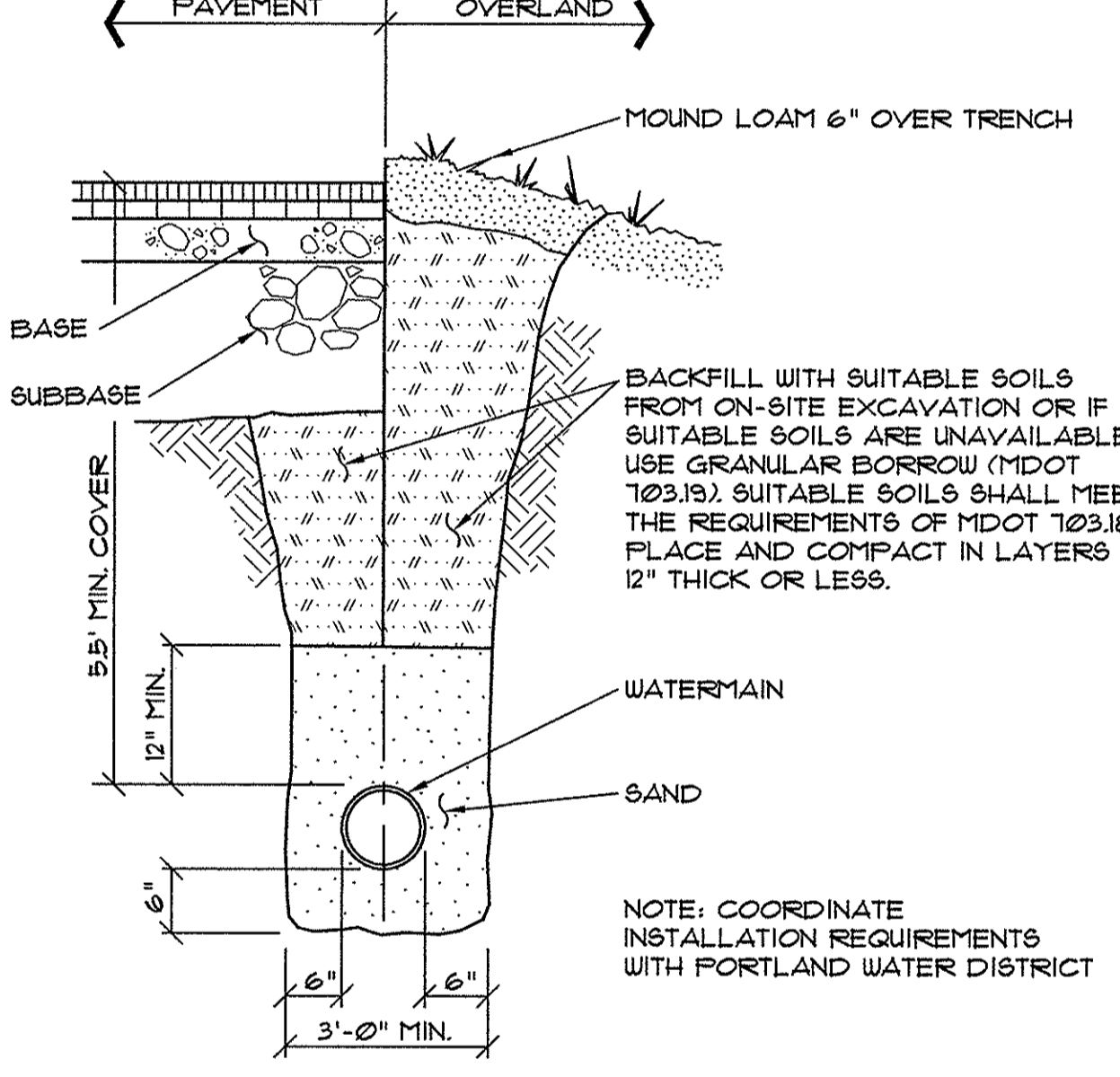
4 OIL INTERCEPTOR PIT DETAIL NOT TO SCALE



8 GAS PIPING TRENCH SECTION NOT TO SCALE



7 CABLE TRENCH SECTION NOT TO SCALE



6 TYPICAL WATER MAIN SECTION NOT TO SCALE

UNDERGROUND UTILITIES WARNING TAPE

IDENTIFICATION TAPE TO BE INSTALLED ABOVE ALL NEW UNDERGROUND UTILITIES AND ABOVE ANY EXISTING UTILITIES THAT MAY BE EXPOSED BY THIS CONSTRUCTION.

DETECTABLE UNDERGROUND MARKING TAPE TO BE PERMANENT, BRIGHT-COLORED, CONTINUOUS-PRINTED PLASTICIZED ALUMINUM TAPE, INTENDED FOR DIRECT BURIAL SERVICE NOT LESS THAN 3\"/>

APWA UNIFORM COLOR CODE:

WHITE	PROPOSED EXCAVATION
PINK	TEMPORARY SURVEY MARKINGS
RED	ELECTRIC POWER LINES, CABLES, CONDUIT AND LIGHTING CABLES
YELLOW	GAS, OIL, STEAM, PETROLEUM OR GASEOUS MATERIALS
ORANGE	COMMUNICATION, ALARM OR SIGNAL LINES, CABLES OR CONDUIT
BLUE	POTABLE WATER
PURPLE	RECLAIMED WATER, IRRIGATION AND SLURRY LINES
GREEN	SEWERS AND DRAIN LINES

1 UNDERGROUND UTILITIES WARNING TAPE

GENERAL NOTES FOR MANHOLES AND CATCH BASINS

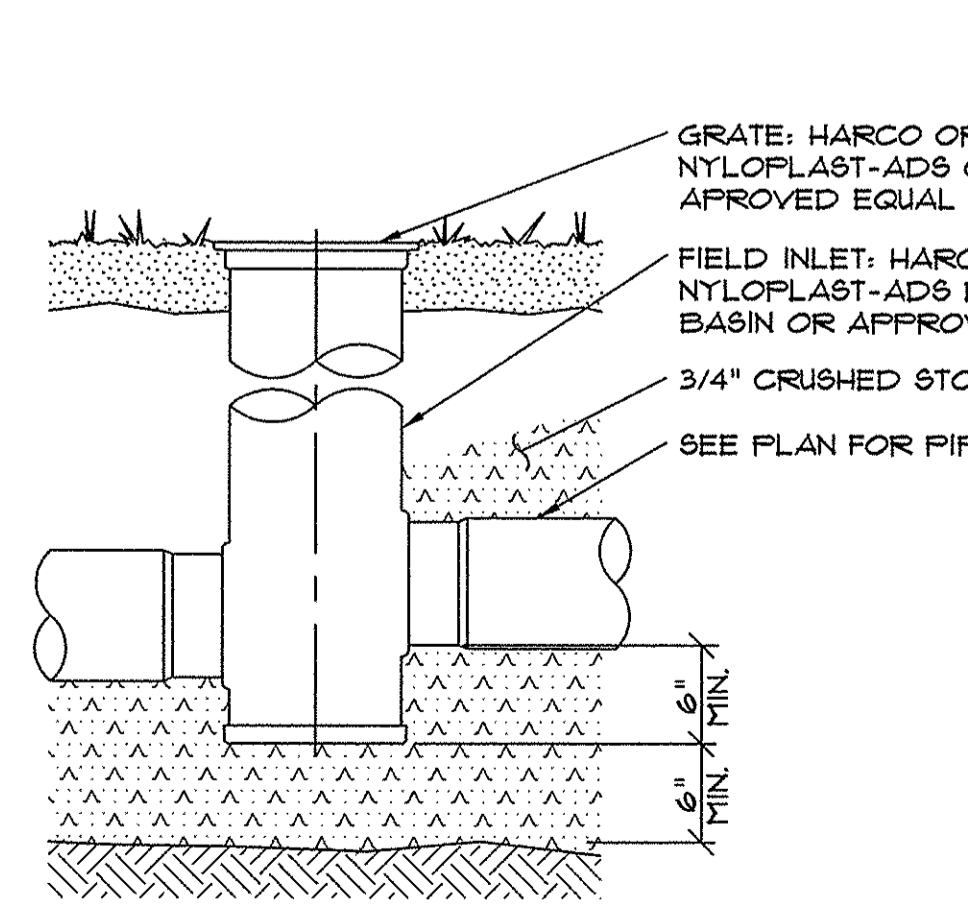
- ALL CONCRETE SHALL HAVE A MINIMUM ULTIMATE COMPRESSIVE STRENGTH OF 4000 LBS. PER SQ. INCH AT THE END OF 28 DAYS, UNLESS OTHERWISE NOTED.
- MANHOLES MAY BE CONSTRUCTED OF PRECAST REINFORCED CONCRETE, OR CAST IN PLACE.
- PRECAST REINFORCED CONE BARREL MANUFACTURED PER ASTM SPEC. C-478.
- ALL STORM AND SEWER MANHOLE COVERS SHALL BE SOLID AND SHALL HAVE ONE 7/8\"/>

2 GENERAL NOTES FOR MANHOLES AND CATCH BASINS (II-4) NOT TO SCALE

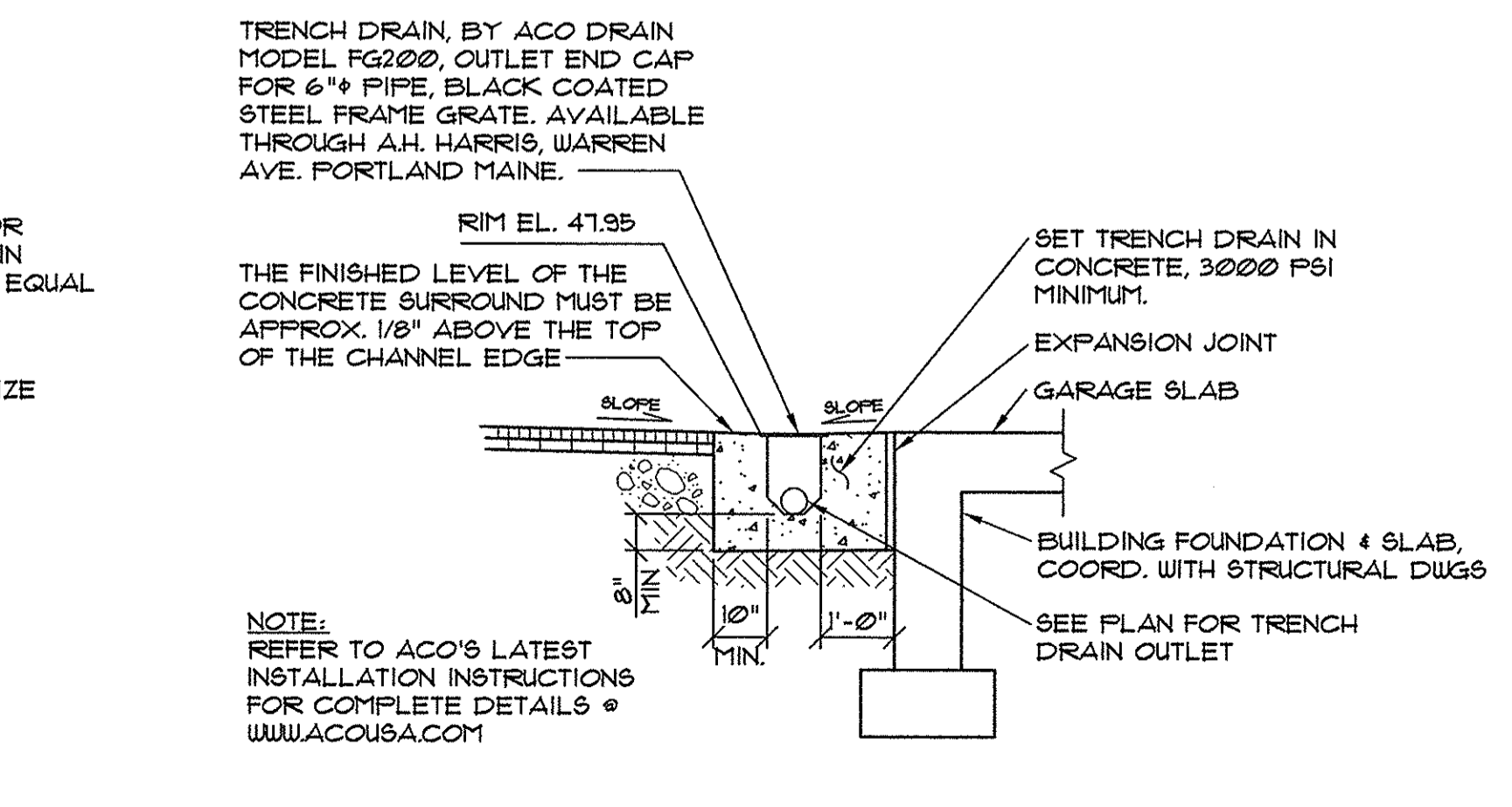
NOTES: DEPTH OF BITUMINOUS PAVEMENT AND AGGREGATE COURSES SHALL BE DETERMINED BY STREET CLASSIFICATION. ANY ALTERNATE TRENCHING OR PAVEMENT METHODS SHALL BE APPROVED IN ADVANCE BY THE CITY OF PORTLAND, DEPARTMENT OF PUBLIC SERVICES.

PIPE DIAMETER, D (INCHES)	MAX. TRENCH WIDTH, A (FEET)
4	4.0
6	4.0
8	4.0
10	4.0
12	4.0
15	5.0
18	5.0
21	5.0
24	6.0
27	6.0
30	6.0
36	6.0
42	7.0
48	7.0

3 TYPICAL PIPE TRENCH INSTALLATION (11-12) NOT TO SCALE

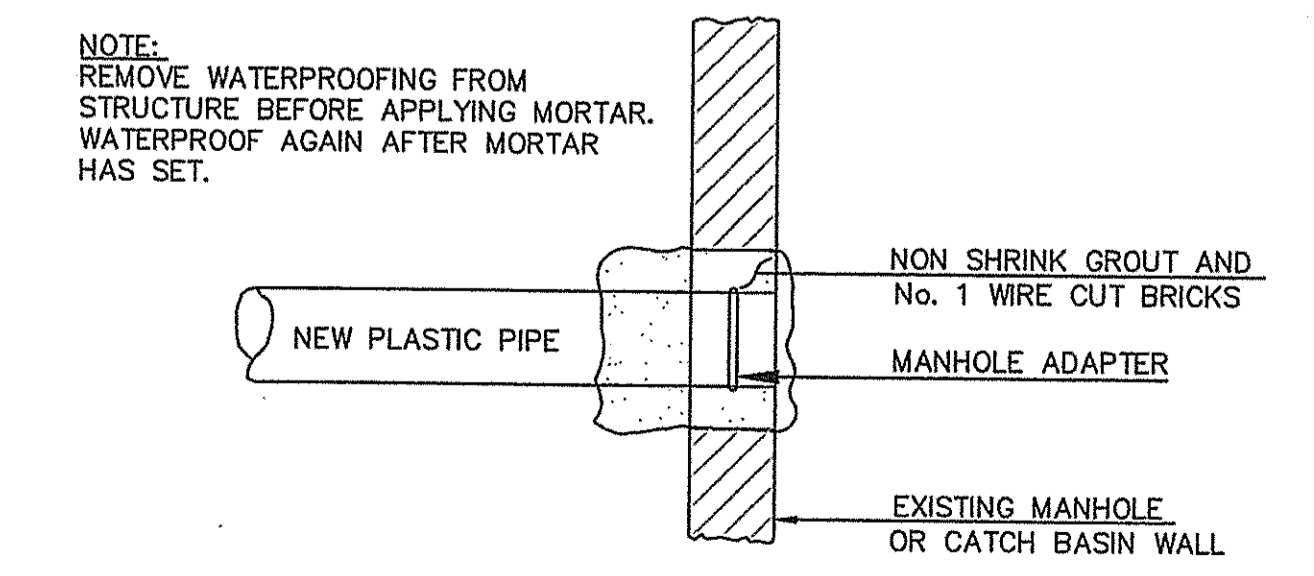


10 FIELD INLET DETAIL NOT TO SCALE

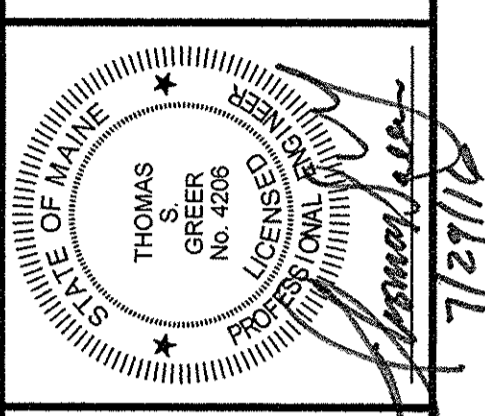


9 TRENCH DRAIN SECTION NOT TO SCALE

NOTE: EXISTING MANHOLE OR CATCH BASIN SHALL BE CORE DRILLED FOR PIPE INSTALLATION. IF PIPE DIAMETER IS SO LARGE THAT CORE DRILLING IS PROHIBITED, THE CONTRACTOR MAY SAW CUT THE STRUCTURE TO CREATE PIPE OPENING. THE NEW OPENING MUST THEN BE SEALED AND WATERTIGHT BOTH INSIDE AND OUTSIDE THE STRUCTURE.



10 PLASTIC PIPE CONNECTION METHODS (II-13 & II-14) NOT TO SCALE



NO.	DATE	DESCRIPTION
4	7/20/16	ADDED DETAIL 4, OIL INTERCEPTOR PIT
3	7/19/16	REV'S PER OWNER REVIEW & RFI #2
2	3/22/16	REV'D PER STAFF COMMENTS FOR SITE PLAN APPROVAL
1	3/8/16	REV'D PER STAFF REVIEW COMMENTS

LUMINATO CONDOMINIUM, LLC  
118 CONGRESS STREET, UNIT 401  
PORTLAND, MAINE

SCALE: AS SHOWN  
DATE: JANUARY 22, 2016  
PROJECT: 15178

DRN BY: JDC  
DESG BY: TSG  
CHK BY: TSG

LUMINATO CONDOMINIUMS  
167 NEWBURY STREET, PORTLAND, MAINE

**SITE DETAILS**