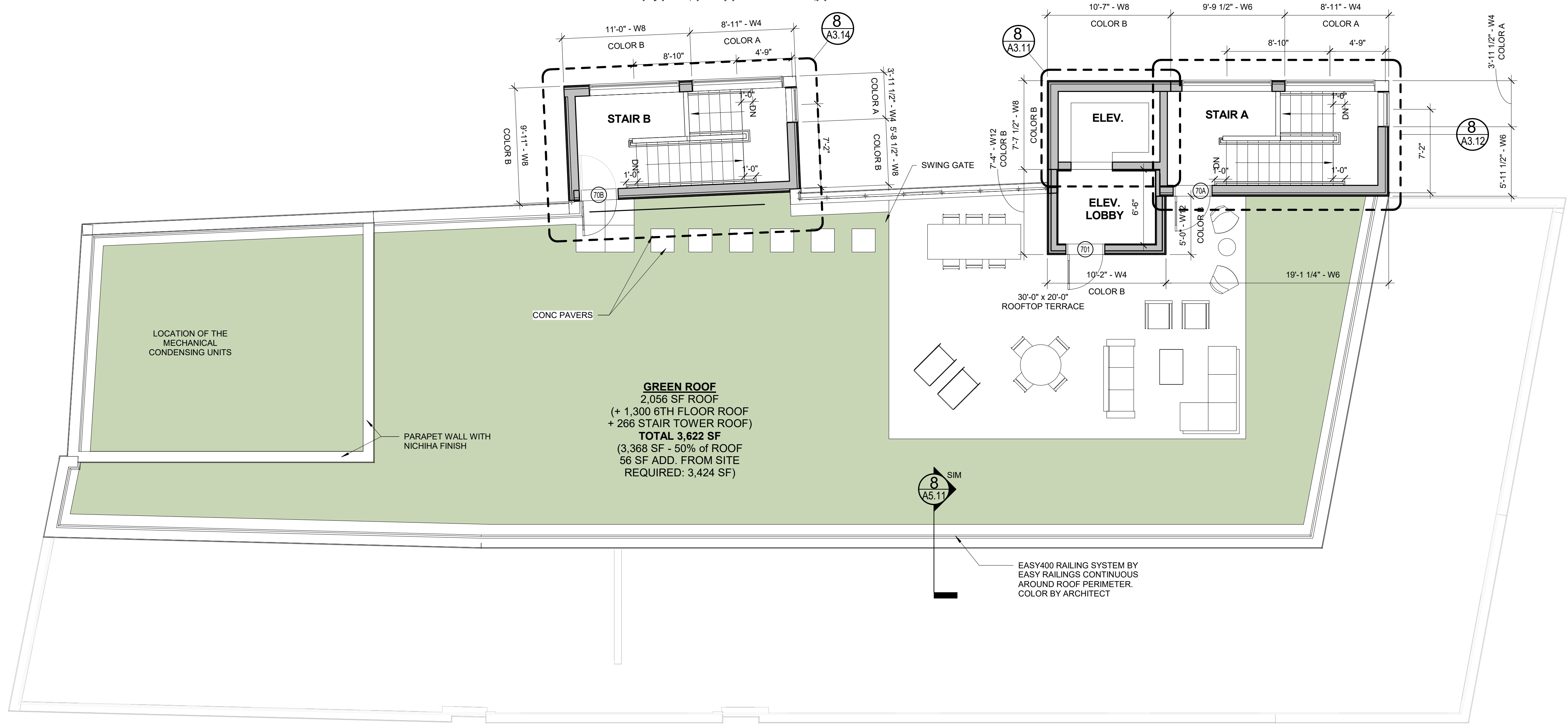
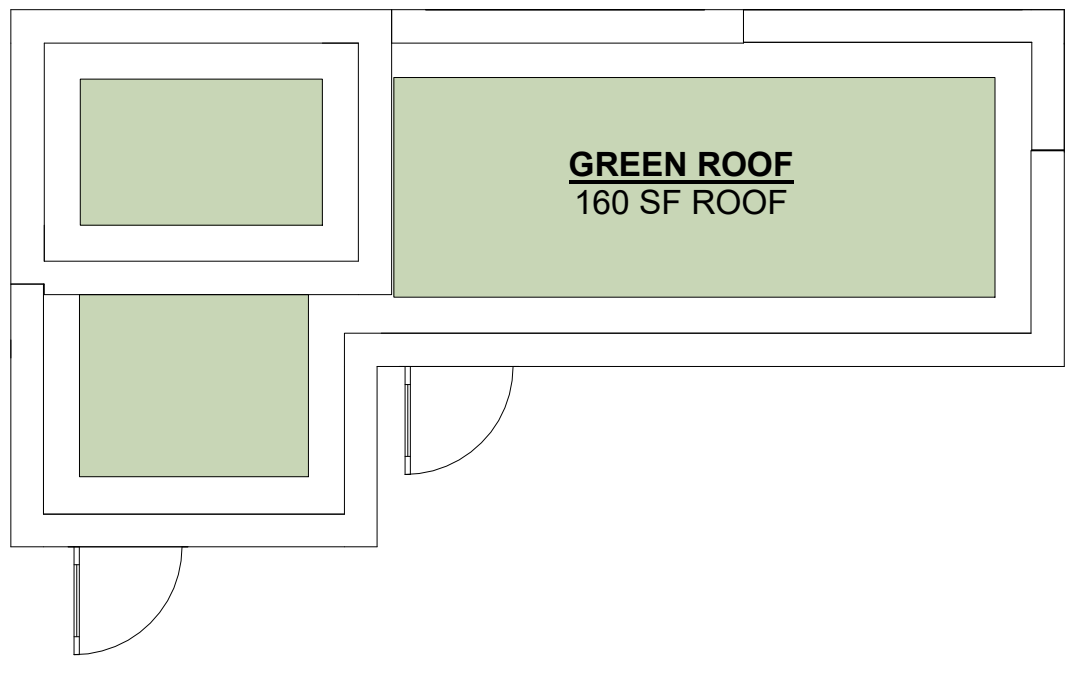
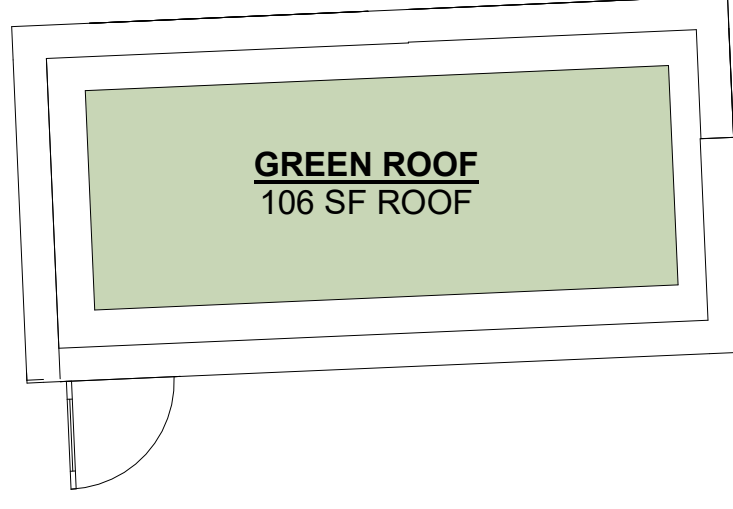


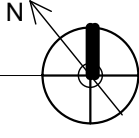
3 ROOF STAIR / ELEV. TOWERS

3/16" = 1'-0" 0 2'-0" 4'-0" 8'-0" 16'-0"



1 ROOFTOP TERRACE

3/16" = 1'-0" 0 2'-0" 4'-0" 8'-0" 16'-0"



GREEN ROOF
2,056 SF ROOF
(+ 1,300 6TH FLOOR ROOF
+ 266 STAIR TOWER ROOF)
TOTAL 3,622 SF
(3,368 SF - 50% of ROOF
56 SF ADD. FROM SITE
REQUIRED: 3,424 SF)

LOCATION OF THE
MECHANICAL
CONDENSING UNITS

PARAPET WALL WITH
NICHHA FINISH

CONC PAVERS

EASY400 RAILING SYSTEM BY
EASY RAILINGS CONTINUOUS
AROUND ROOF PERIMETER.
COLOR BY ARCHITECT