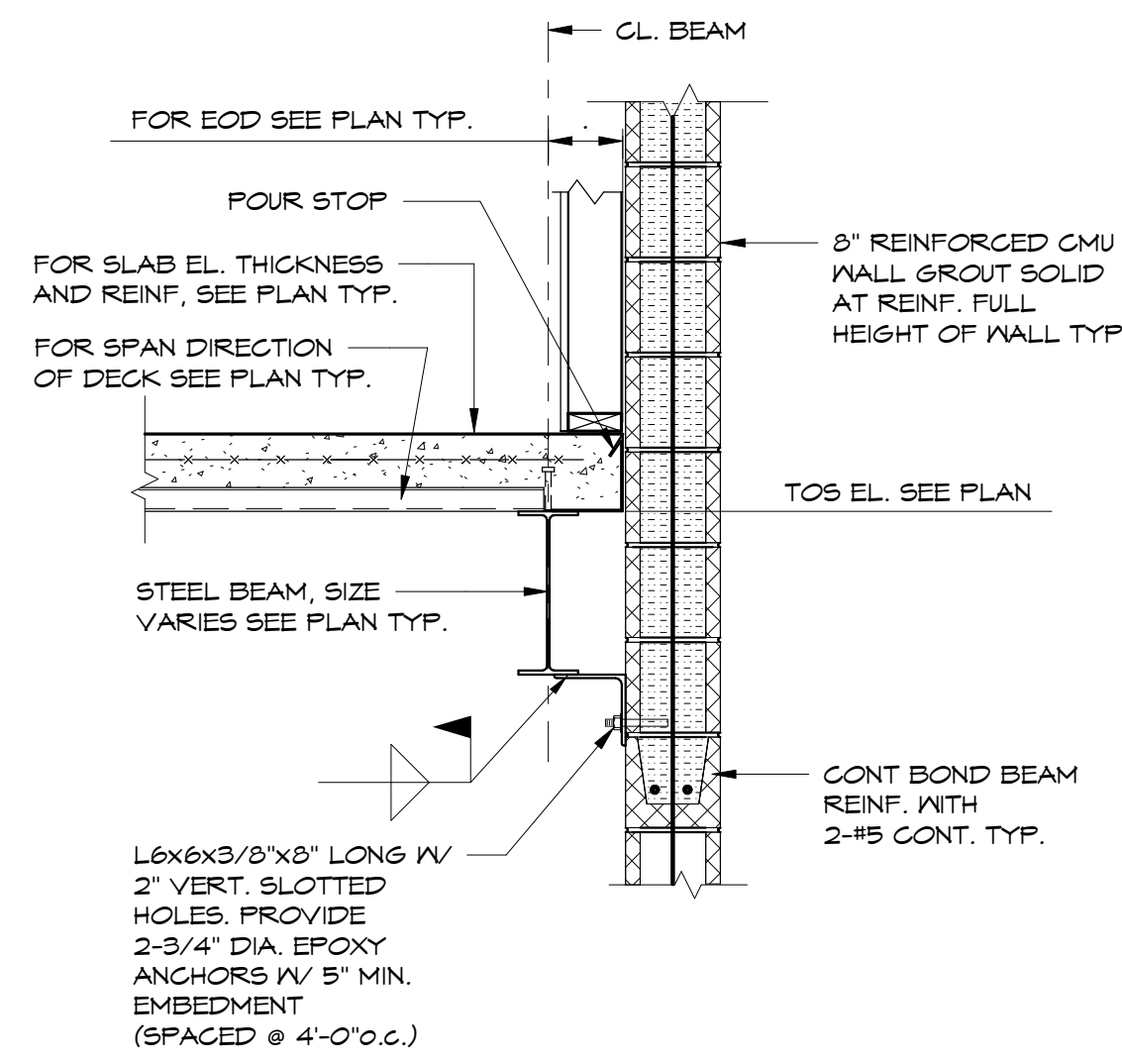
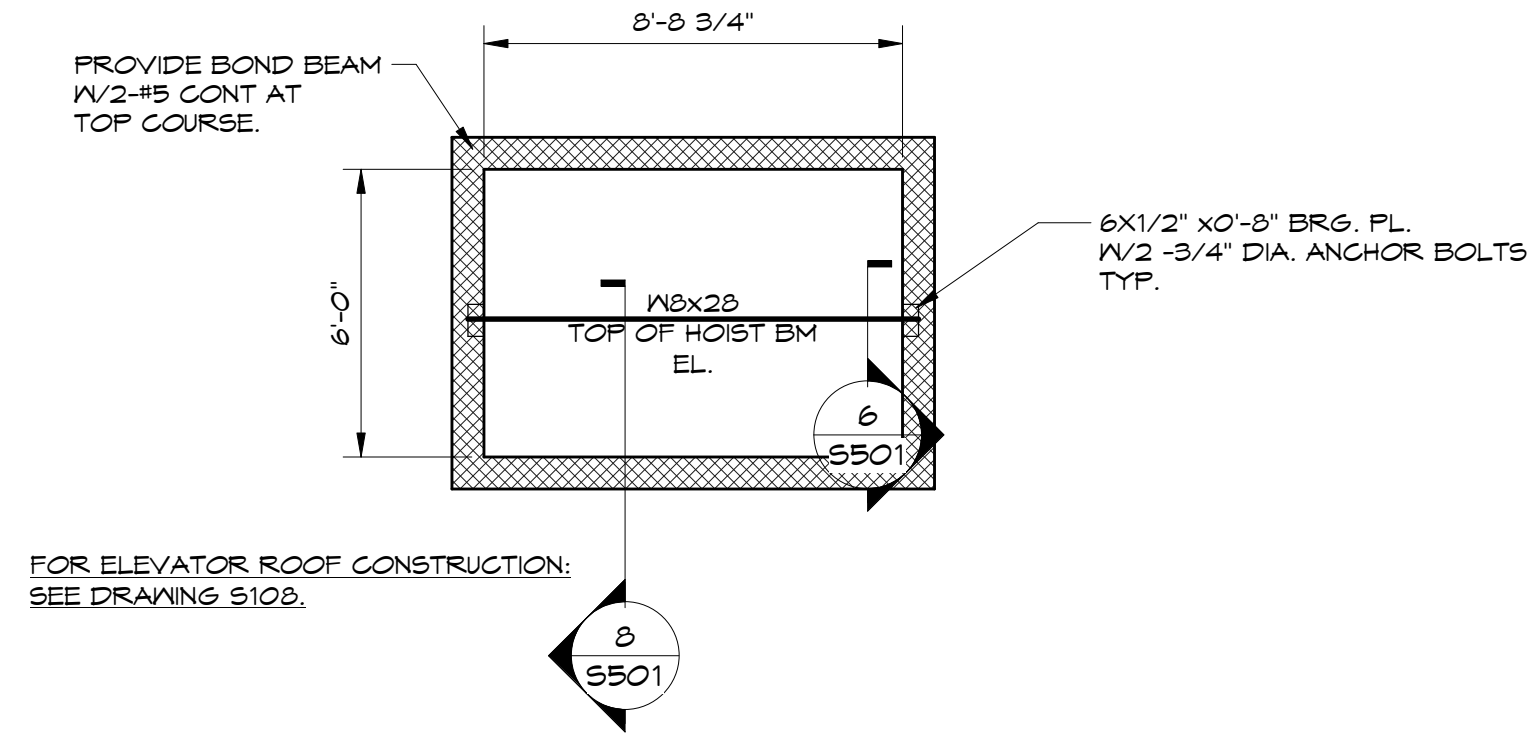


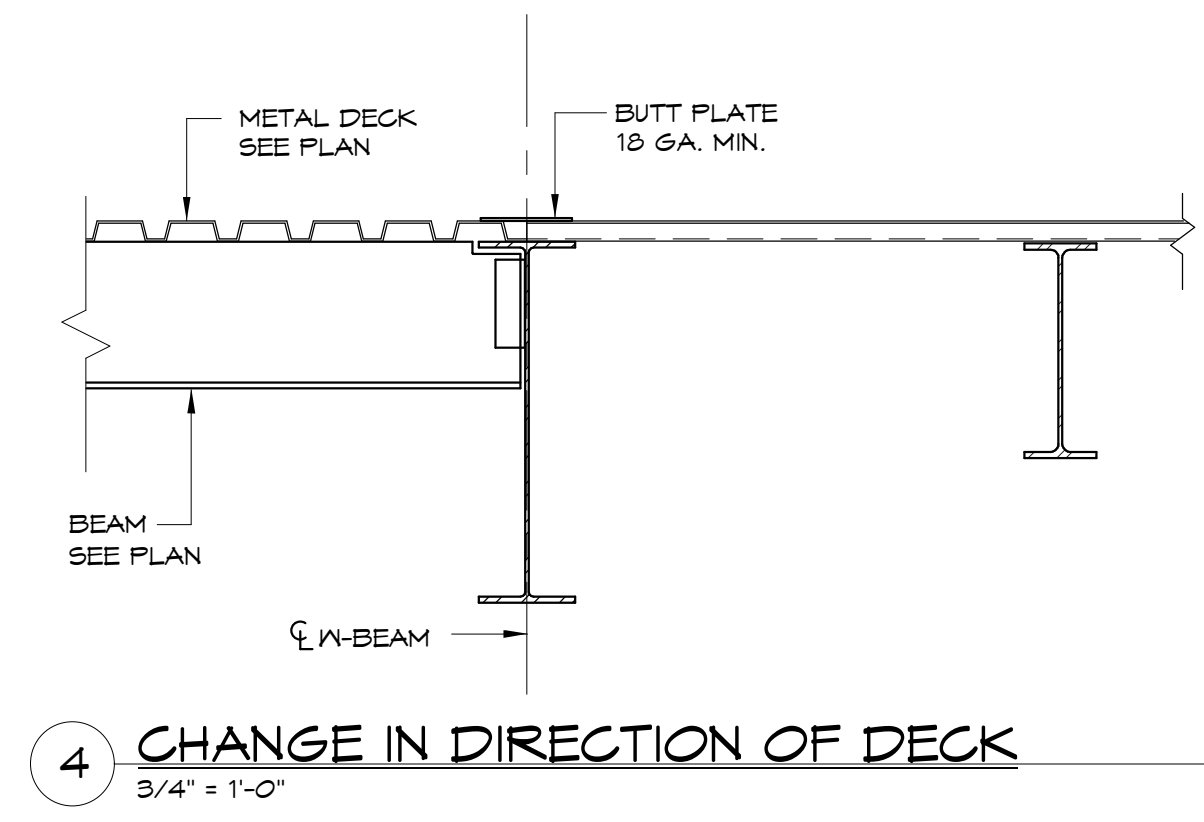
1 DETAIL
3/4" = 1'-0"



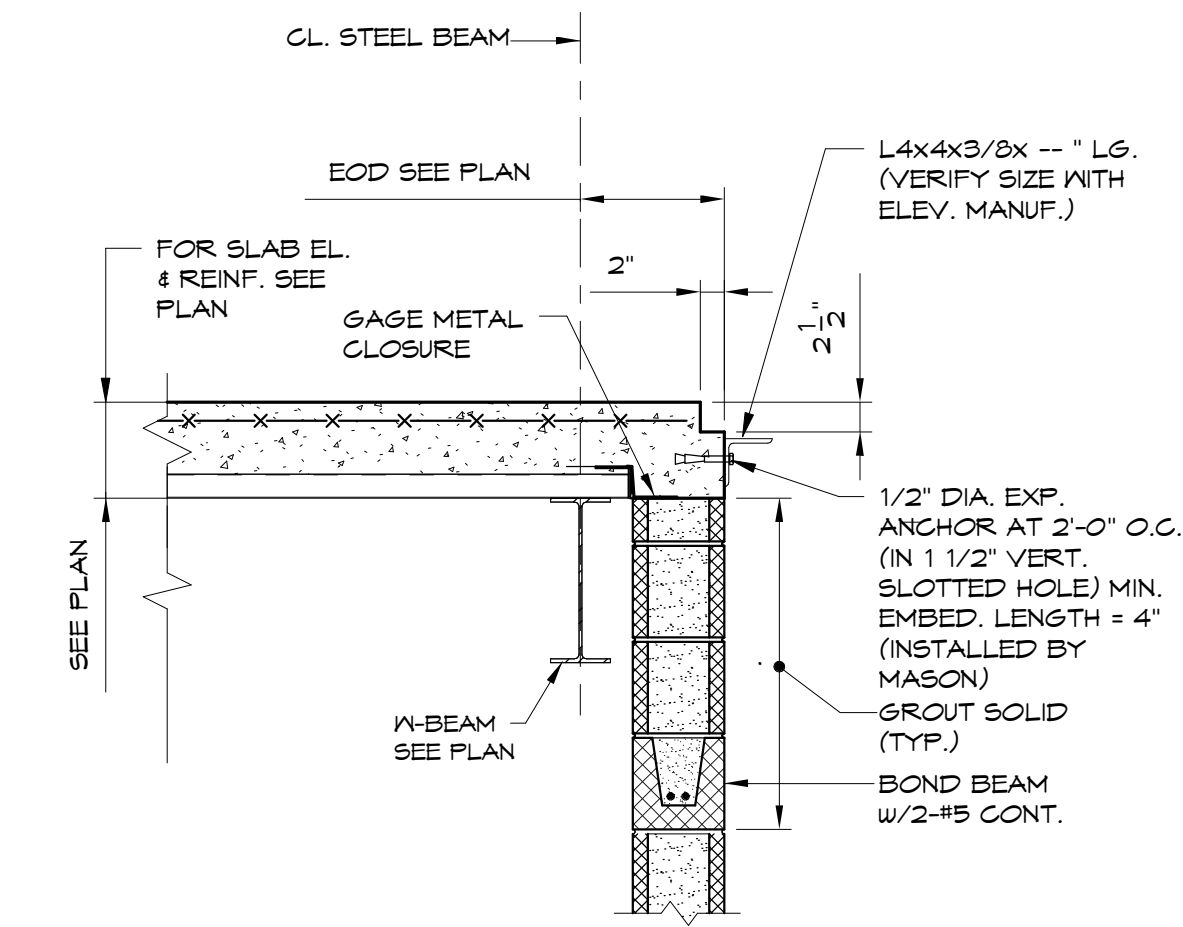
2 DETAIL
3/4" = 1'-0"



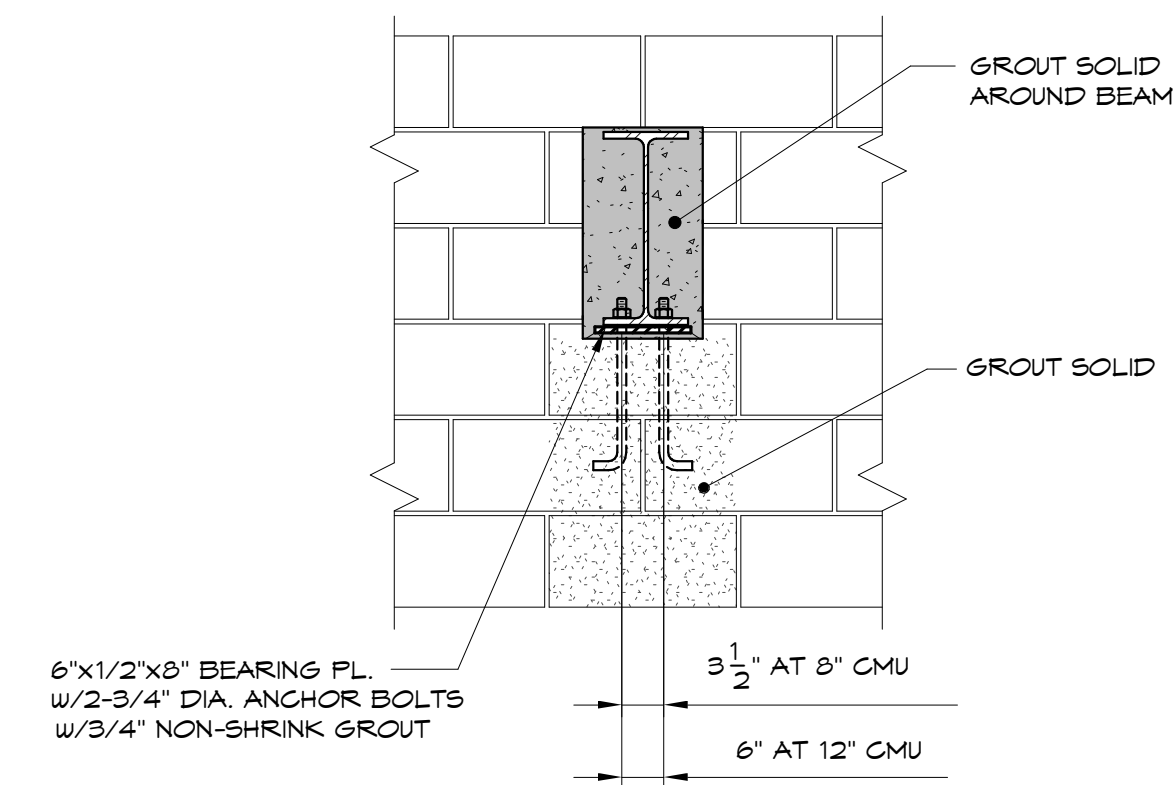
3 ELEVATOR ROOF FRAMING PLAN
1/4" = 1'-0"



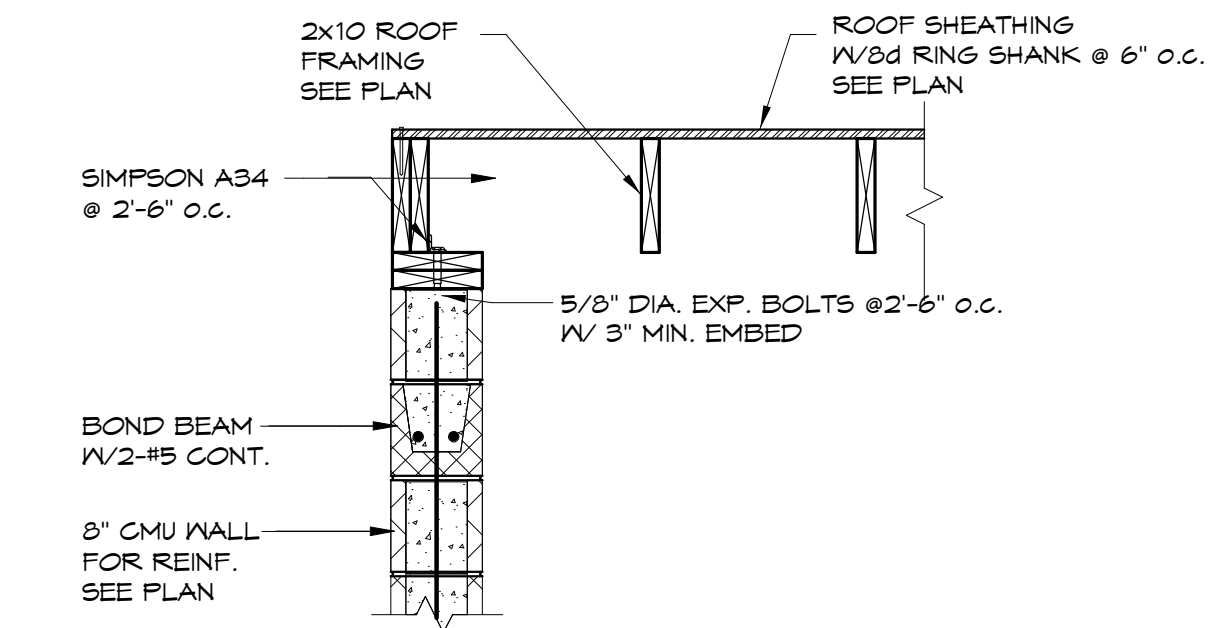
4 CHANGE IN DIRECTION OF DECK
3/4" = 1'-0"



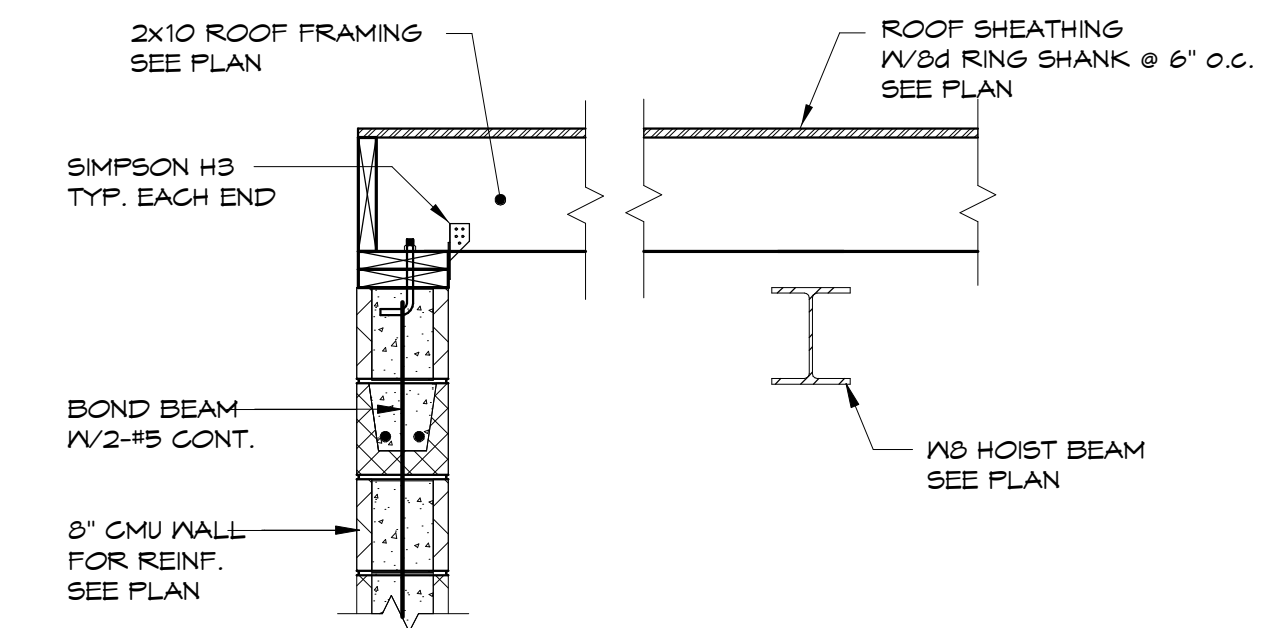
5 SECTION AT ELEVATOR SILL
3/4" = 1'-0"



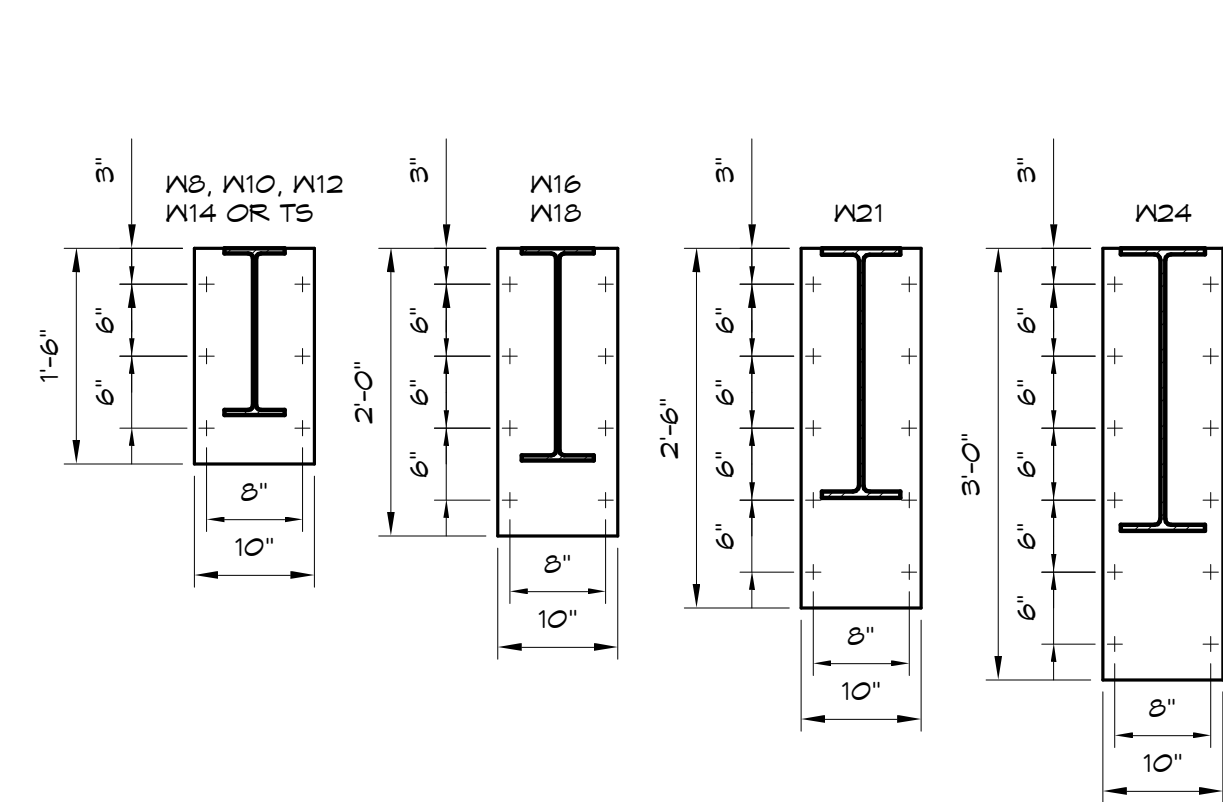
6 TYPICAL STEEL BEARING PLATE AT CMU WALL
3/4" = 1'-0"



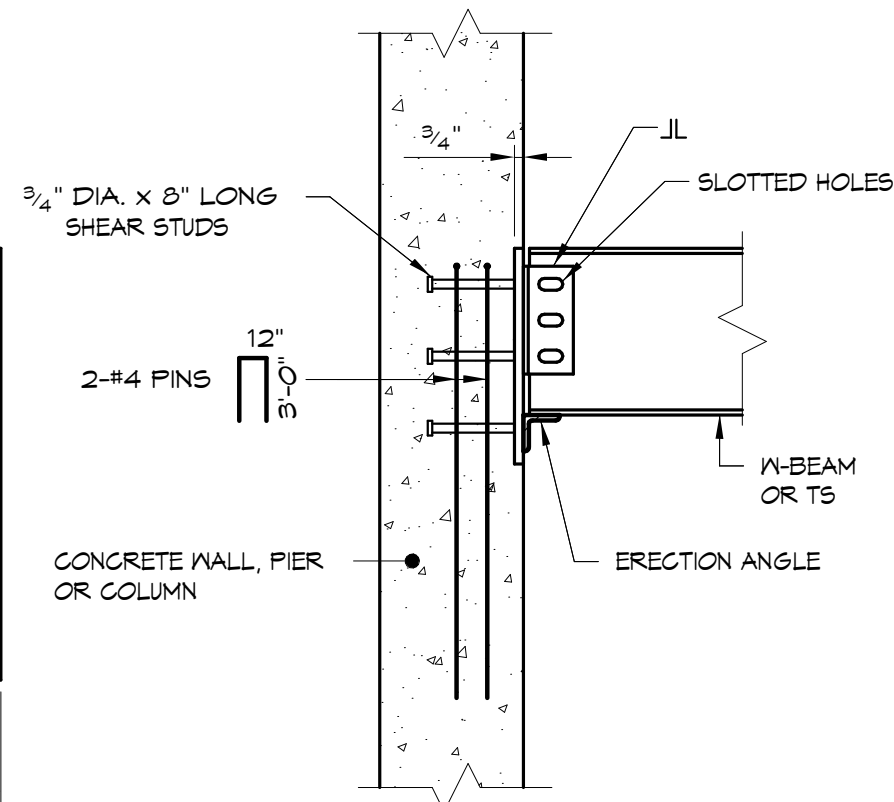
7 SECTION
3/4" = 1'-0"



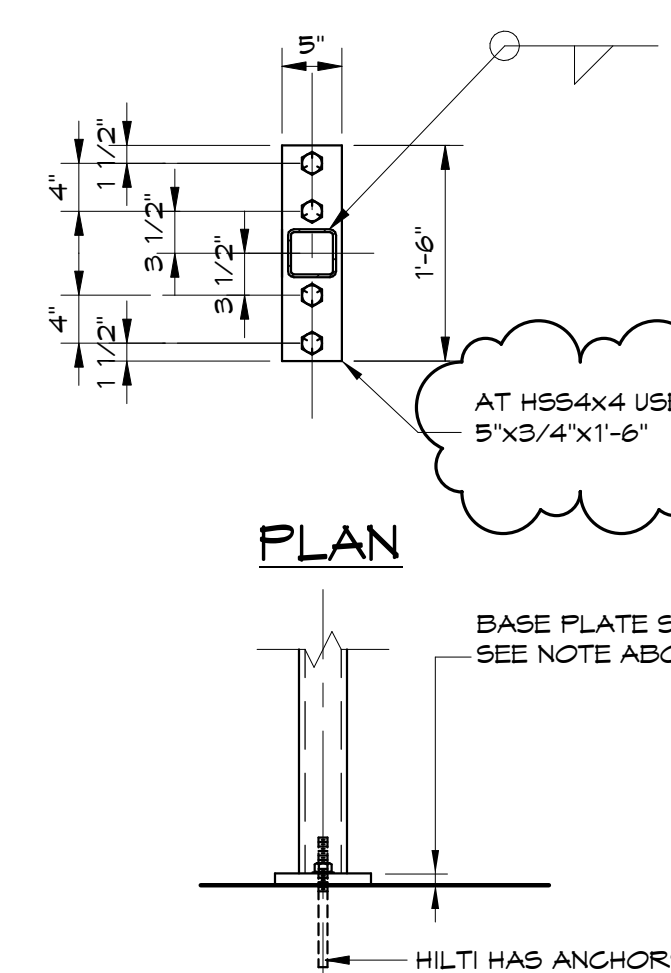
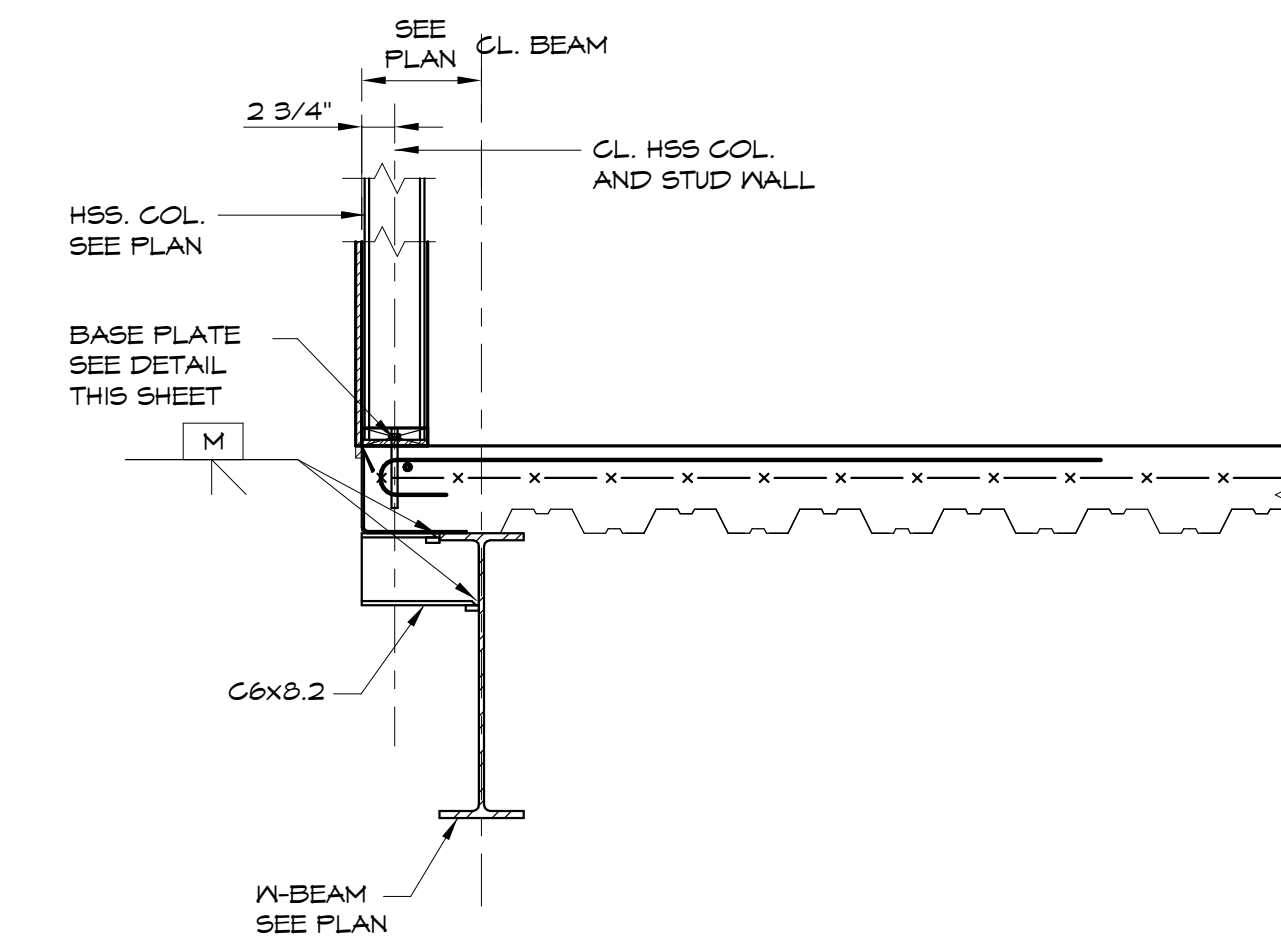
8 SECTION
3/4" = 1'-0"



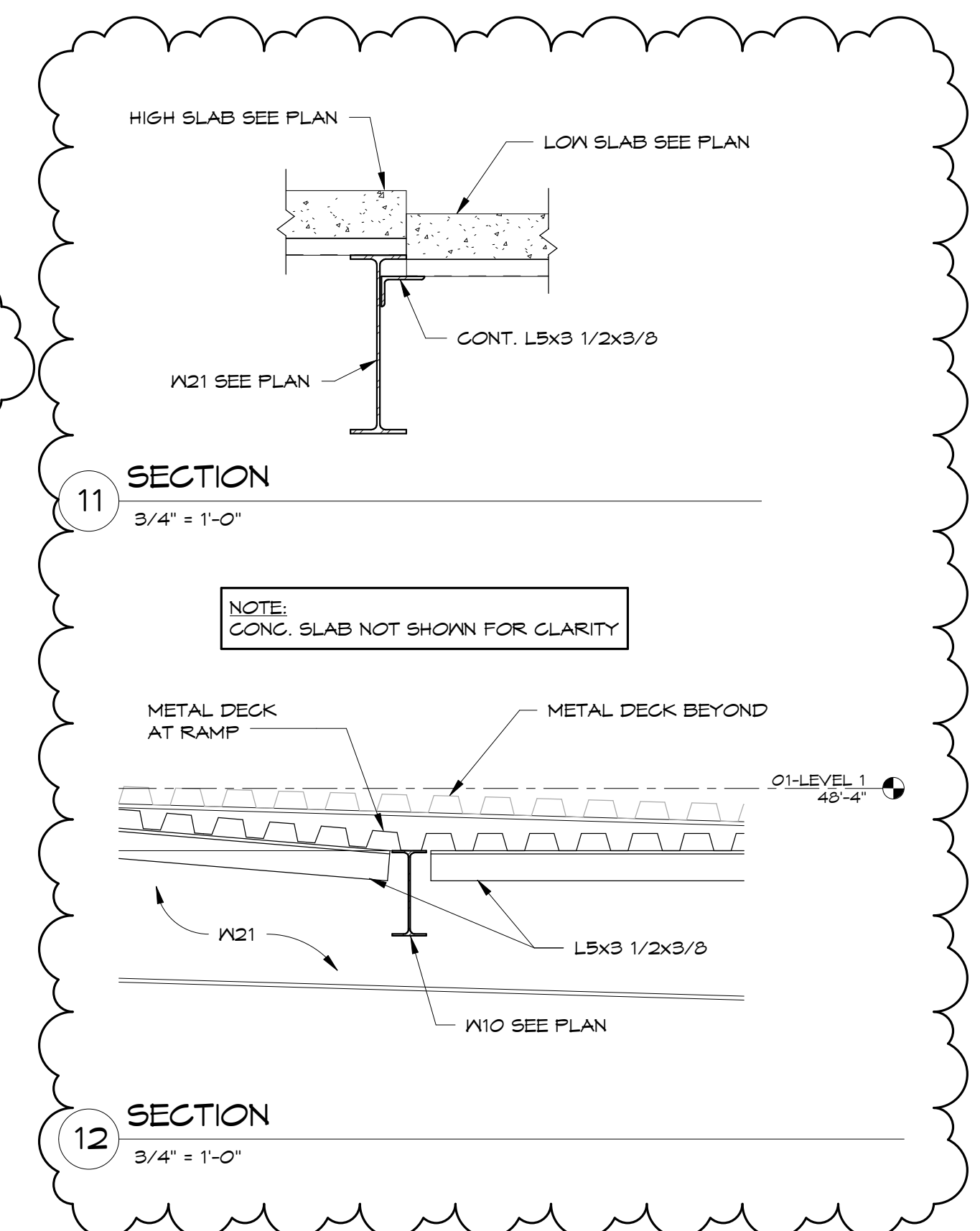
9 TYPICAL PLATE INSERT FOR STEEL CONNECTIONS DETAIL
3/4" = 1'-0"



10 SECTION AT POST
3/4" = 1'-0"



SECTION BASE PLATE DETAIL



11 SECTION
3/4" = 1'-0"

12 SECTION
3/4" = 1'-0"

Prepared For:
NewHeight Group
118 Congress Street, Unit 401
Portland, Maine

Consulting Engineer:
VEITAS VEITAS
engineers
68 Granite Street, Suite 101
Business Marshments 02184
Tel: (707) 626-2868 Fax: (707) 626-2865

Architect:
ARCHETYPE
architects
48 Union Wharf Portland, Maine 04101
(207) 775-6022 ARCHETYPE@ARCHETYPEPA.COM

Project:
LUMINATO
Newbury Street Portland, Maine

Revisions:	FOUNDATION PERMIT	PERMIT
05/16/16	80% REVIEW DRAWINGS	
06/07/16	100% STRUCTURAL DRAWINGS	
06/24/16	100% CONSTRUCTION DRAWINGS	
07/20/16	100% CONSTRUCTION DRAWINGS	

Date: 04/19/16
Scale: As indicated
STEEL SECTIONS & DETAILS

S501