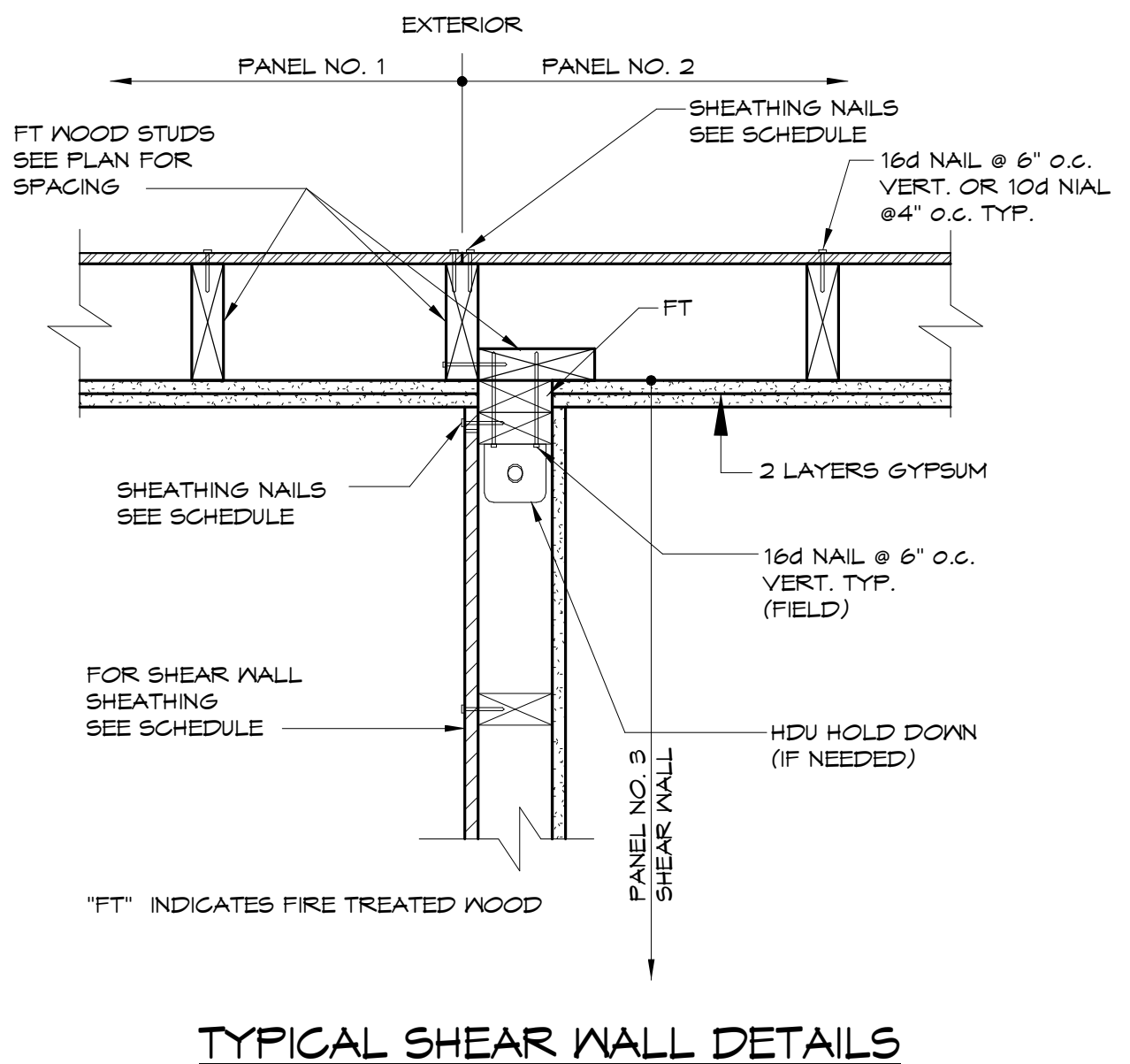


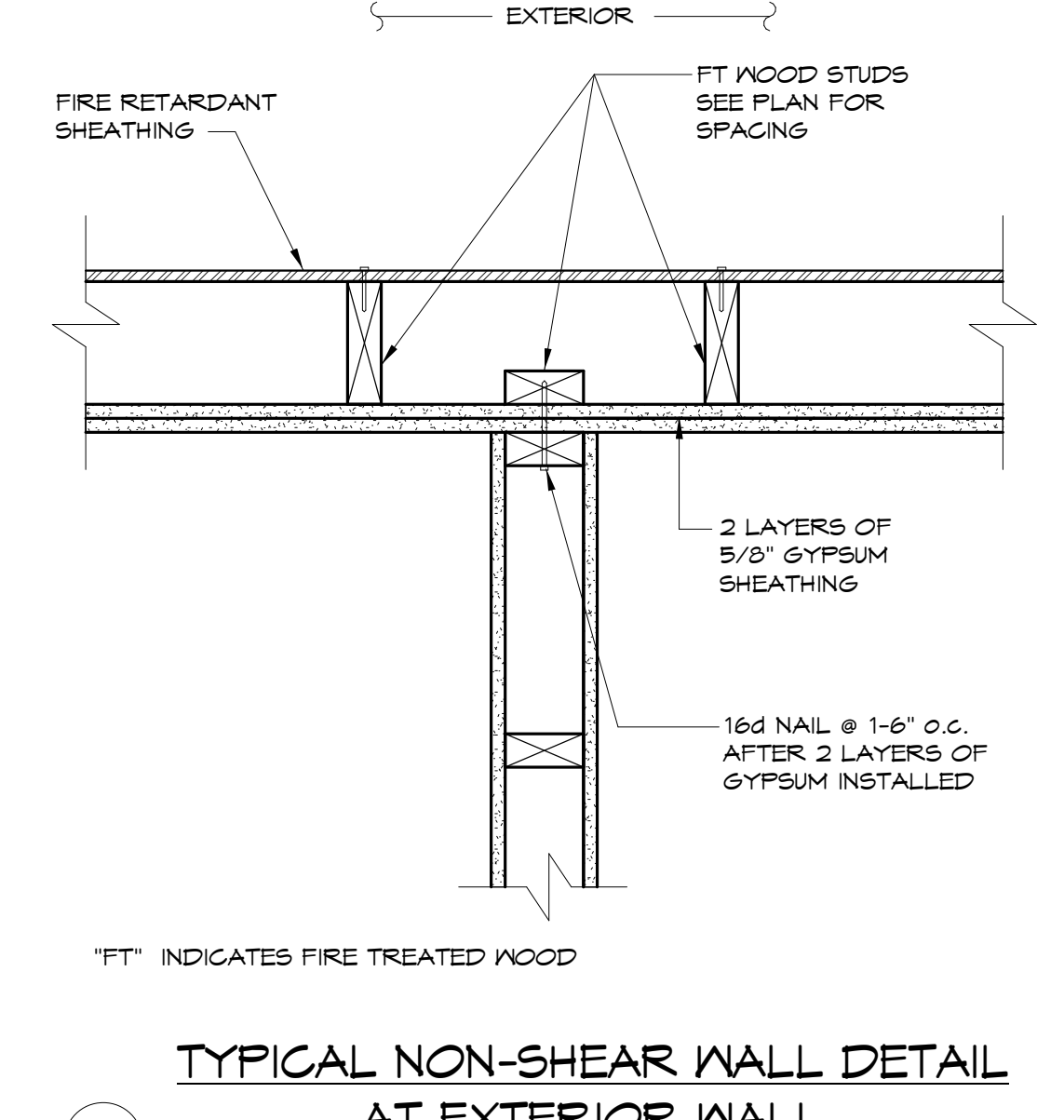
1 1 1/2" = 1'-0"

TYPICAL SHEAR WALL DETAIL AT DOUBLE WALL AT EXTERIOR WALL



2 1 1/2" = 1'-0"

TYPICAL SHEAR WALL DETAILS AT EXTERIOR WALL



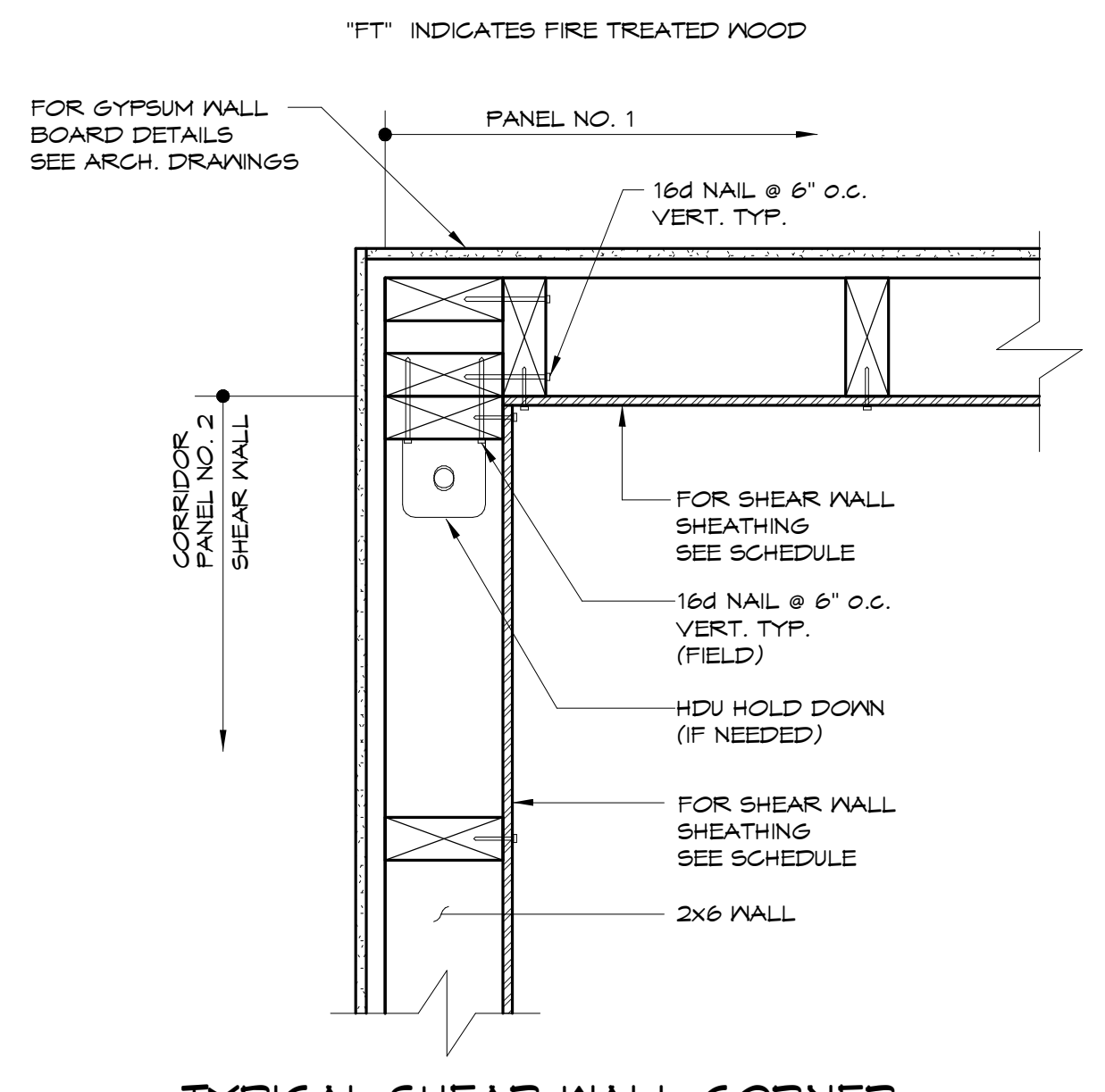
3 1 1/2" = 1'-0"

TYPICAL NON-SHEAR WALL DETAIL AT EXTERIOR WALL

NOTE:
SHOP NAILS NOT SHOWN FOR CLARITY

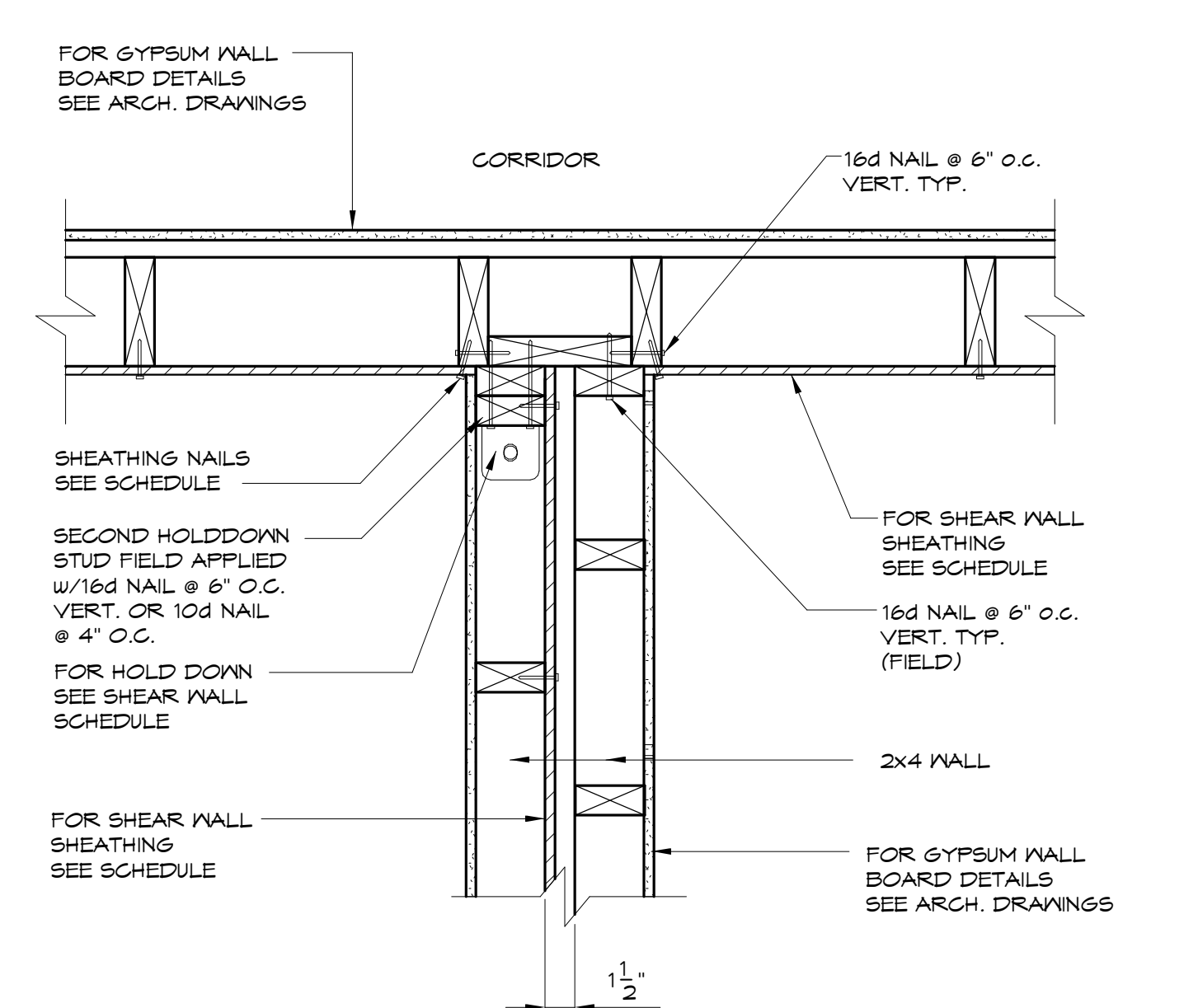
→ INDICATES FIELD APPLIED 16d NAIL @ 6" o.c. VERT.

⇌ INDICATES FIELD APPLIED SHEATHING NAIL. SEE SCHEDULE FOR REQUIREMENTS.



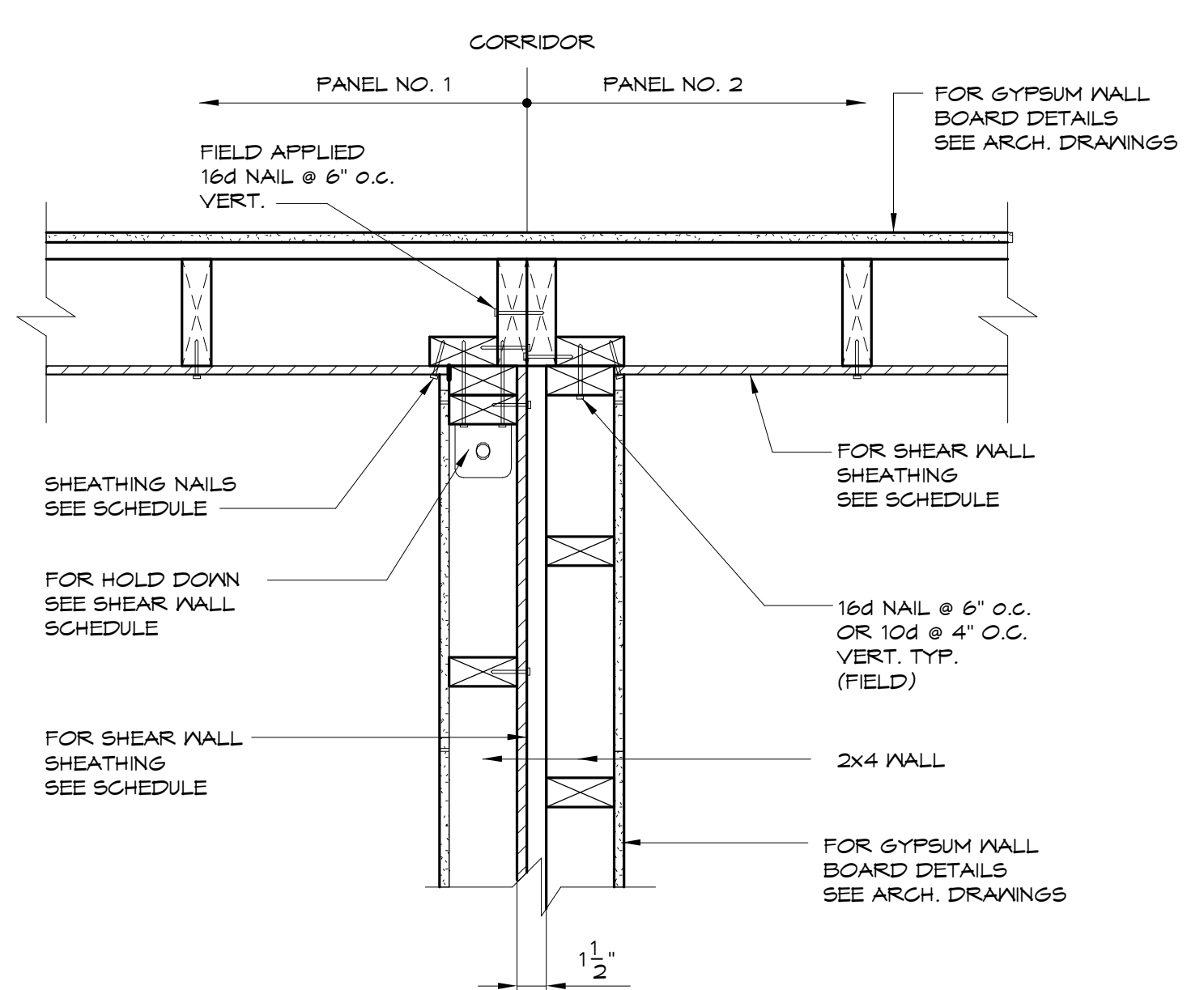
4 1 1/2" = 1'-0"

TYPICAL SHEAR WALL CORNER DETAIL AT CORRIDOR WALL



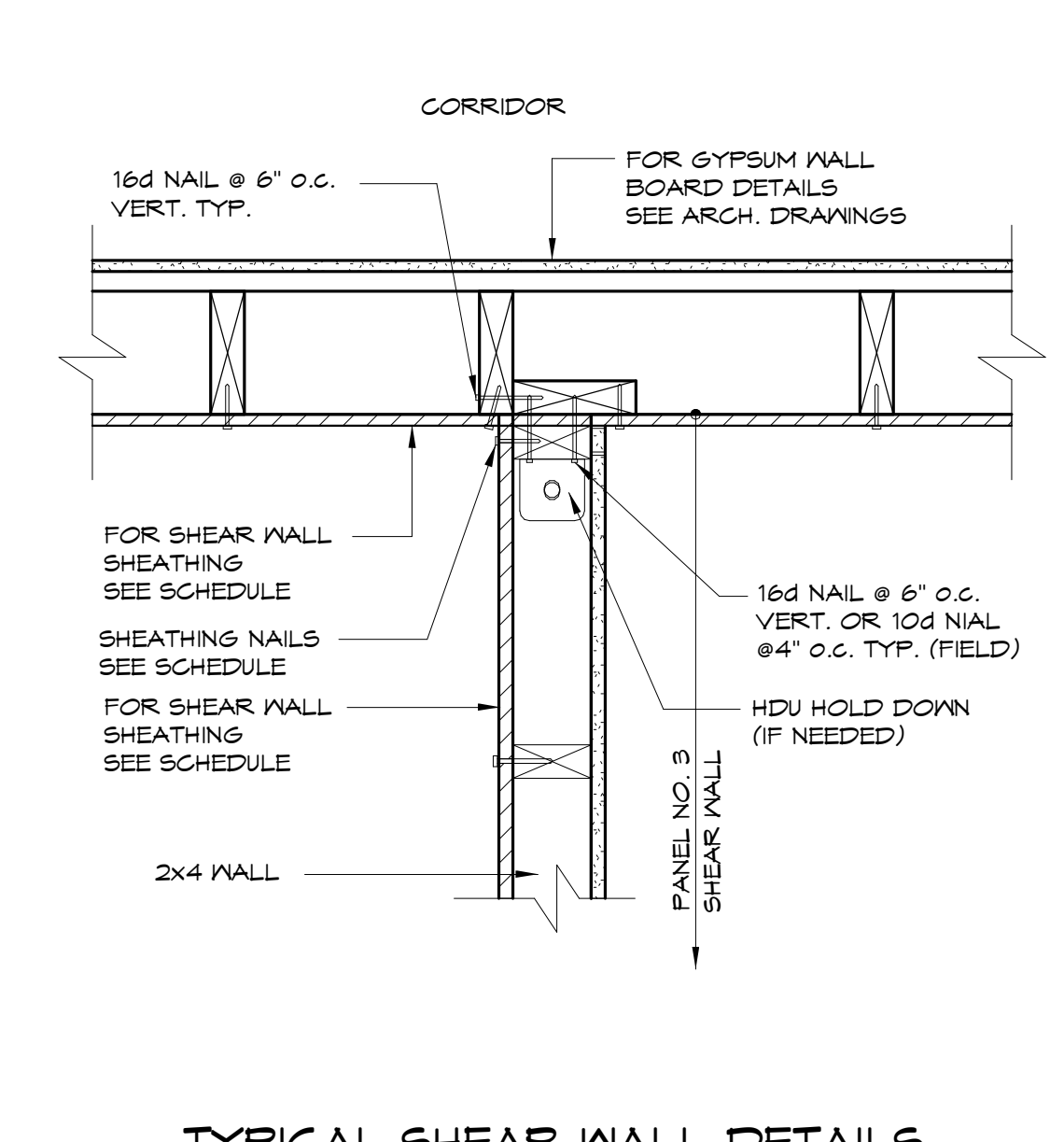
5 1 1/2" = 1'-0"

CORRIDOR INTERSECTION NOT AT PANEL POINT



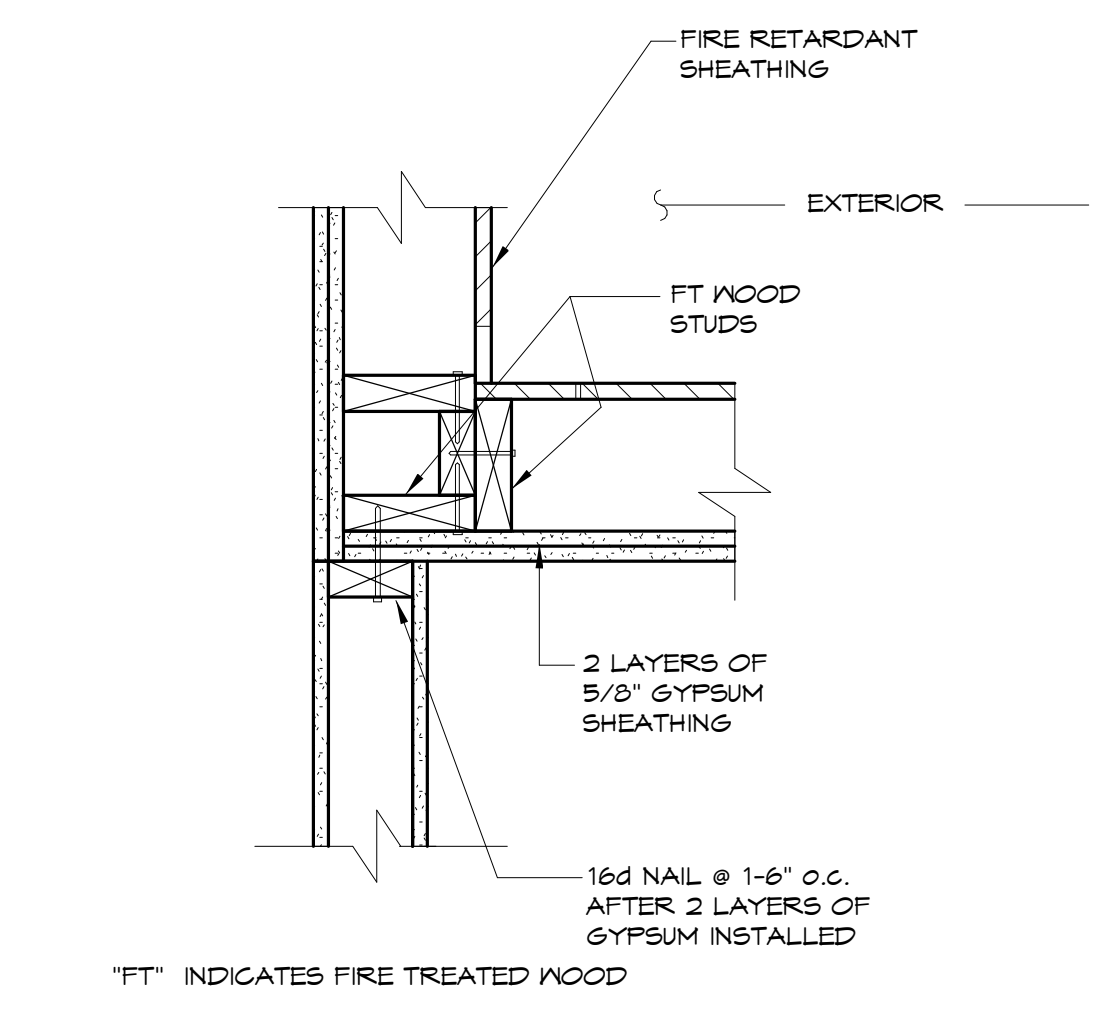
6 1 1/2" = 1'-0"

CORRIDOR INTERSECTION AT PANEL POINT



7 1 1/2" = 1'-0"

TYPICAL SHEAR WALL DETAILS AT CORRIDOR WALL



9 1 1/2" = 1'-0"

TYPICAL NON-SHEAR WALL DETAIL AT EXTERIOR WALL

Prepared For: **NewHeight Group**
118 Congress Street, Unit 401
Portland, Maine

Consulting Engineer: **VEITAS VEITAS** engineers
638 Granite Street, Suite 101
Business, Scarborough, ME 04157
Tel: (708) 266-7400 Fax: (708) 266-2005

Architect: **ARCHETYPE** architects
48 Union Wharf Portland, Maine 04101
(207) 775-6022 ARCHETYPE@ARCHETYPEPA.COM

Project: **LUMINATO**
Newbury Street Portland, Maine

Revisions:	05/16/16	FOUNDATION PERMIT
	06/07/16	80% REVIEW DRAWINGS
	06/24/16	100% STRUCTURAL DRAWINGS
	07/20/16	100% CONSTRUCTION DRAWINGS

Date: 04/19/16
Scale: 1 1/2" = 1'-0"
SHEAR WALL DETAILS

S305